



South Auckland Land District
Territorial Authority :
Rotorua District
Date of Photography 2001
Boundaries are Indicative Only

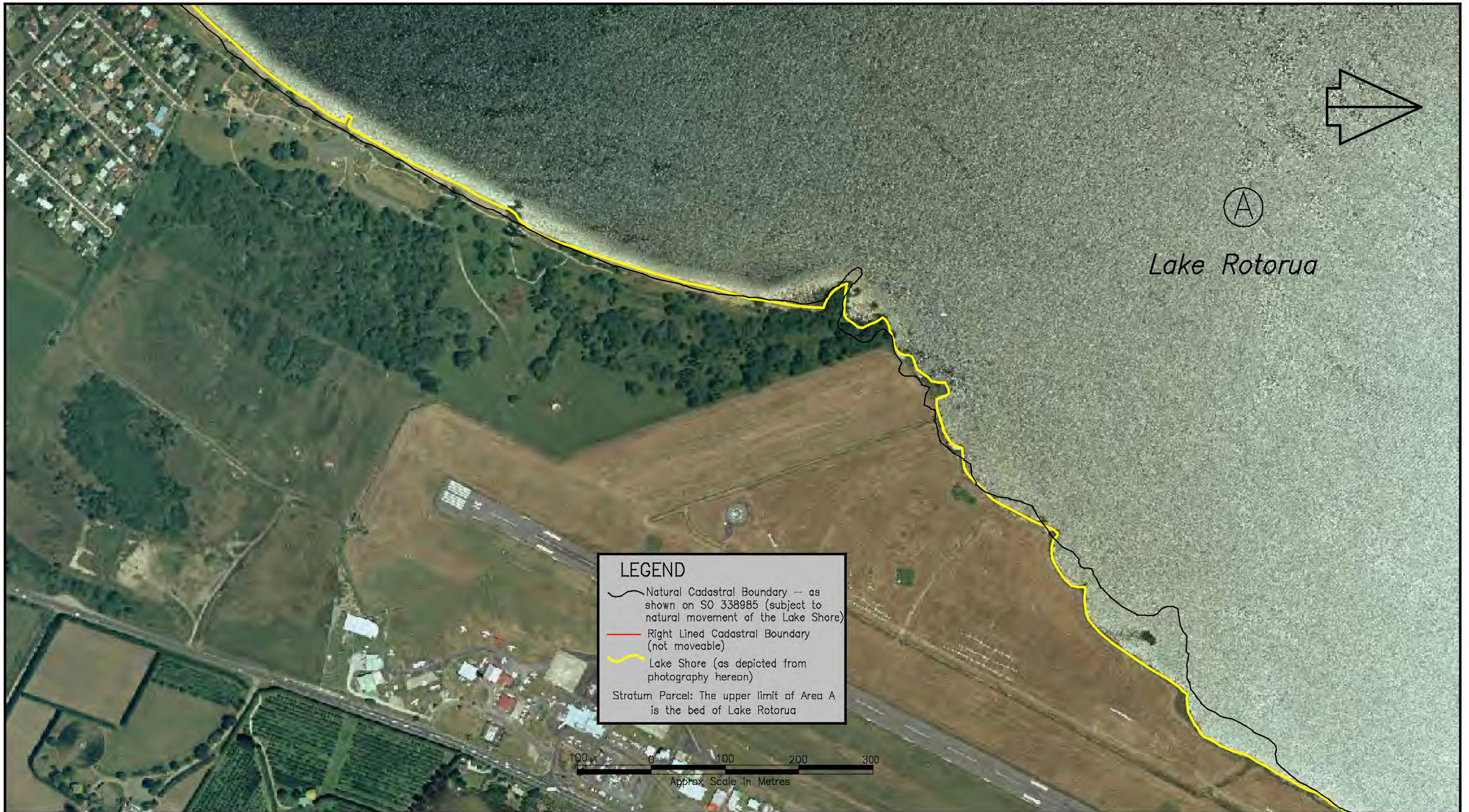
John Taris Graphics Consultancy
& Flaherty Survey & Mapping Ltd

Bed of Lake Rotorua
(Shown A hereon containing 8088.0000ha more or less being Sec 1 SO 338985)

Area referred to in the Deed of Settlement between
Te Arawa and the Crown

Approved as to Boundaries:
Roku Mihinui October 2004
For and on behalf of Te Arawa
Kay Harrison October 2004
For and on behalf of the Crown

18 of 23 SO 340310



South Auckland Land District
Territorial Authority :
Rotorua District
Date of Photography 2001
Boundaries are Indicative Only

John Taris Graphics Consultancy
& Flaherty Survey & Mapping Ltd

Bed of Lake Rotorua
(Shown A hereon containing 8088.0000ha more or less being Sec 1 SO 338985)

Area referred to in the Deed of Settlement between
Te Arawa and the Crown

Approved as to Boundaries:
Roku Mihinui October 2004
For and on behalf of Te Arawa
Kay Harrison October 2004
For and on behalf of the Crown

19 of 23 SO 340310



South Auckland Land District
Territorial Authority :
Rotorua District
Date of Photography 2001
Boundaries are Indicative Only

John Taris Graphics Consultancy
& Flaherty Survey & Mapping Ltd

Bed of Lake Rotorua
(Shown A hereon containing 8088.0000ha more or less being Sec 1 SO 338985)

Area referred to in the Deed of Settlement between
Te Arawa and the Crown

Approved as to Boundaries:
Roku Mihini October 2004
For and on behalf of Te Arawa
Kay Harrison October 2004
For and on behalf of the Crown

20 of 23 SO 340310



Ⓐ
Lake Rotorua

LEGEND
 ~~~~~ Natural Cadastral Boundary – as shown on SO 338985 (subject to natural movement of the Lake Shore)  
 ——— Right Lined Cadastral Boundary (not moveable)  
 ——— Lake Shore (as depicted from photography hereon)  
 Stratum Parcel: The upper limit of Area A is the bed of Lake Rotorua

100 0 100 200 300  
 Approx Scale in Metres



South Auckland Land District  
 Territorial Authority :  
 Rotorua District  
 Date of Photography 2001  
 Boundaries are Indicative Only  
 John Taris Graphics Consultancy  
 & Flaherty Survey & Mapping Ltd

**Bed of Lake Rotorua**  
 (Shown A hereon containing 8088.0000ha more or less being Sec 1 SO 338985)

Area referred to in the Deed of Settlement between  
 Te Arawa and the Crown

Approved as to Boundaries:  
*Roku Mihinui* October 2004  
 For and on behalf of Te Arawa  
*Kay Harrison* October 2004  
 For and on behalf of the Crown




21 of 23 SO 340310



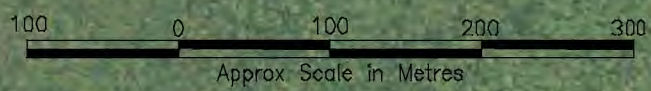
(A)

Lake Rotorua

**LEGEND**

-  Natural Cadastral Boundary - as shown on SO 338985 (subject to natural movement of the Lake Shore)
-  Right Lined Cadastral Boundary (not moveable)
-  Lake Shore (as depicted from photography hereon)

Stratum Parcel: The upper limit of Area A is the bed of Lake Rotorua



South Auckland Land District  
 Territorial Authority :  
 Rotorua District  
 Date of Photography 2001  
 Boundaries are Indicative Only  
  
 John Taris Graphics Consultancy  
 & Flaherty Survey & Mapping Ltd

**Bed of Lake Rotorua**  
 (Shown A hereon containing 8088.0000ha more or less being Sec 1 SO 338985)

Area referred to in the Deed of Settlement between  
 Te Arawa and the Crown

Approved as to Boundaries:  
*Roku Mihinui* October 2004  
 For and on behalf of Te Arawa  
*Kay Harrison* October 2004  
 For and on behalf of the Crown

22 of 23 SO 340310



South Auckland Land District  
 Territorial Authority :  
 Rotorua District  
 Date of Photography 2001  
 Boundaries are Indicative Only

John Taris Graphics Consultancy  
 & Flaherty Survey & Mapping Ltd

**Bed of Lake Rotorua**  
 (Shown A hereon containing 8088.0000ha more or less being Sec 1 SO 338985)

Area referred to in the Deed of Settlement between  
 Te Arawa and the Crown

Approved as to Boundaries:

*Roku Mihinui* October 2004  
 For and on behalf of Te Arawa

*Kay Harrison* October 2004  
 For and on behalf of the Crown

|          |           |
|----------|-----------|
| 23 of 23 | SO 340310 |
|----------|-----------|