



LEGEND

- Natural Cadastral Boundary – as shown on SO 338986 (subject to natural movement of the Lake Shore)
- Right Lined Cadastral Boundary (not moveable)
- Lake Shore (as depicted from photography hereon)

Stratum Parcel: The upper limit of Area A is the bed of Lake Rotoiti

100 0 100 200 300
Approx Scale in Metres



South Auckland Land District
Territorial Authority :
Rotorua District
Date of Photography 2001
Boundaries are Indicative Only

John Taris Graphics Consultancy
& Flaherty Survey & Mapping Ltd

Bed of Lake Rotoiti
(Shown A hereon containing 3418.500ha more or less being Sec 1 SO 338986)

Area referred to in the Deed of Settlement between
Te Arawa and the Crown

Approved as to Boundaries:
Roku Mihinui October 2004
For and on behalf of Te Arawa
Kay Harrison October 2004
For and on behalf of the Crown

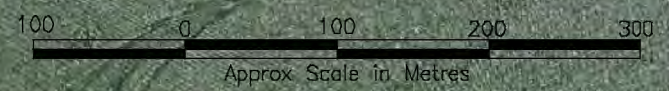
5 of 20 | SO 340311



LEGEND

- Natural Cadastral Boundary – as shown on SO 338986 (subject to natural movement of the Lake Shore)
- Right Lined Cadastral Boundary (not moveable)
- Lake Shore (as depicted from photography hereon)

Stratum Parcel: The upper limit of Area A is the bed of Lake Rotoiti



Bed of Lake Rotoiti

(Shown A hereon containing 3418.500ha more or less being Sec 1 SO 338986)

Area referred to in the Deed of Settlement between
Te Arawa and the Crown

Approved as to Boundaries:

Roku Mihinui October 2004
For and on behalf of Te Arawa

Kay Harrison October 2004
For and on behalf of the Crown

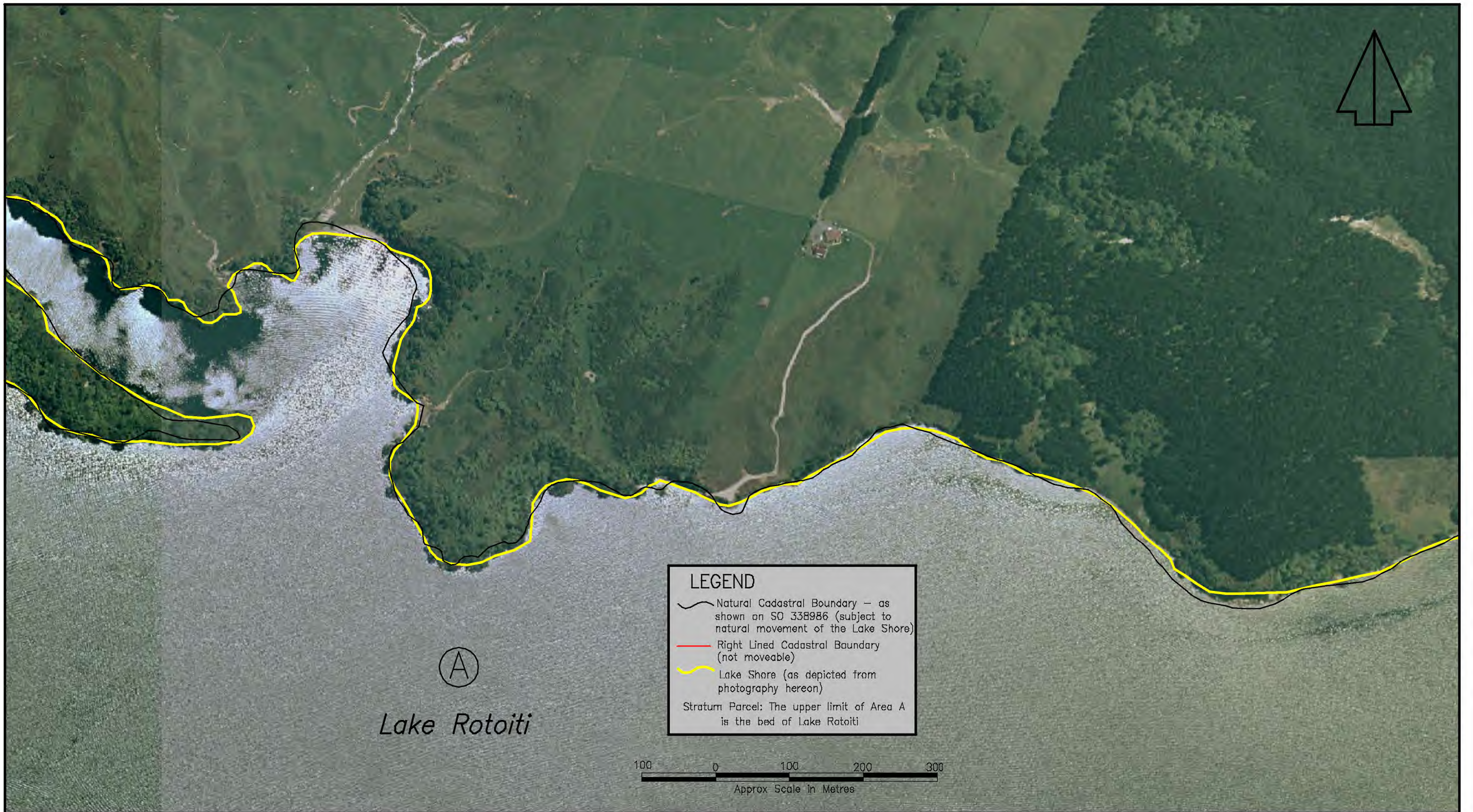
6 of 20

SO 340311






South Auckland Land District
Territorial Authority :
Rotorua District
Date of Photography 2001
Boundaries are Indicative Only

John Taris Graphics Consultancy
& Flaherty Survey & Mapping Ltd

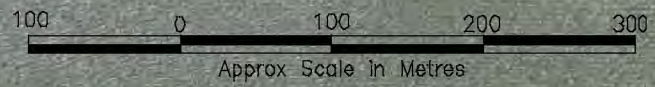


Lake Rotoiti

LEGEND

-  Natural Cadastral Boundary – as shown on SO 338986 (subject to natural movement of the Lake Shore)
-  Right Lined Cadastral Boundary (not moveable)
-  Lake Shore (as depicted from photography hereon)

Stratum Parcel: The upper limit of Area A is the bed of Lake Rotoiti



Bed of Lake Rotoiti

(Shown A hereon containing 3418.500ha more or less being Sec 1 SO 338986)

Area referred to in the Deed of Settlement between
Te Arawa and the Crown

Approved as to Boundaries:

Roku Mihinui October 2004
For and on behalf of Te Arawa

Kay Harrison October 2004
For and on behalf of the Crown

7 of 20

SO 340311



South Auckland Land District
Territorial Authority :
Rotorua District
Date of Photography 2001
Boundaries are Indicative Only

John Taris Graphics Consultancy
& Flaherty Survey & Mapping Ltd



South Auckland Land District
 Territorial Authority :
 Rotorua District
 Date of Photography 2001
 Boundaries are Indicative Only
 John Taris Graphics Consultancy
 & Flaherty Survey & Mapping Ltd

Bed of Lake Rotoiti
 (Shown A hereon containing 3418.500ha more or less being Sec 1 SO 338986)

Area referred to in the Deed of Settlement between
 Te Arawa and the Crown

Approved as to Boundaries:

Roku Mihinui October 2004
 For and on behalf of Te Arawa

Kay Harrison October 2004
 For and on behalf of the Crown

8 of 20	SO 340311
---------	-----------



South Auckland Land District
Territorial Authority :
Rotorua District
Date of Photography 2001
Boundaries are Indicative Only

John Taris Graphics Consultancy
& Flaherty Survey & Mapping Ltd

Bed of Lake Rotoiti
(Shown A hereon containing 3418.500ha more or less being Sec 1 SO 338986)

Area referred to in the Deed of Settlement between
Te Arawa and the Crown

Approved as to Boundaries:
Roku Mihinui October 2004
For and on behalf of Te Arawa
Kay Harrison October 2004
For and on behalf of the Crown

9 of 20	SO 340311
---------	-----------