

South Auckland Land District
Territorial Authority :
Rotorua District
Date of Photography 2001
Boundaries are Indicative Only

John Taris Graphics Consultancy
& Flaherty Survey & Mapping Ltd

Bed of Lake Rotorua
(Shown A hereon containing 8088.0000ha more or less being Sec 1 SO 338985)




Area referred to in the Deed of Settlement between
Te Arawa and the Crown

Approved as to Boundaries:
Roku Mihinui October 2004
For and on behalf of Te Arawa
Kay Harrison October 2004
For and on behalf of the Crown

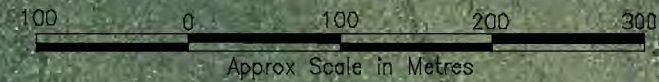
6 of 23 SO 340310



LEGEND

-  Natural Cadastral Boundary – as shown on SO 338985 (subject to natural movement of the Lake Shore)
-  Right Lined Cadastral Boundary (not moveable)
-  Lake Shore (as depicted from photography hereon)

Stratum Parcel: The upper limit of Area A is the bed of Lake Rotorua



Ⓐ
Lake Rotorua



South Auckland Land District
Territorial Authority :
Rotorua District
Date of Photography 2001
Boundaries are Indicative Only

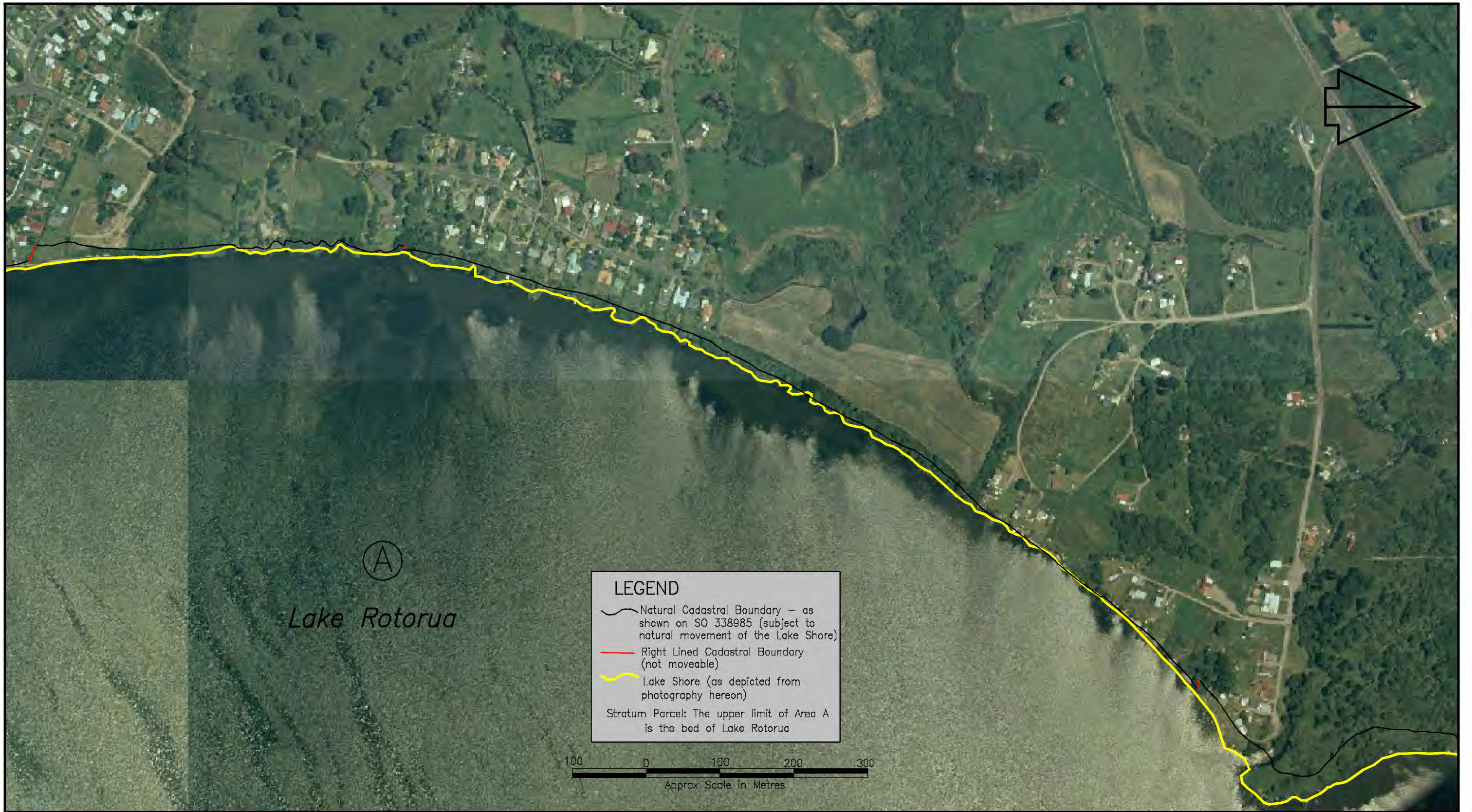
John Taris Graphics Consultancy
& Flaherty Survey & Mapping Ltd

Bed of Lake Rotorua
(Shown A hereon containing 8088.0000ha more or less being Sec 1 SO 338985)

Area referred to in the Deed of Settlement between
Te Arawa and the Crown

Approved as to Boundaries:
Roku Mihiniui October 2004
For and on behalf of Te Arawa
Kay Harrison October 2004
For and on behalf of the Crown

7 of 23 SO 340310



South Auckland Land District
 Territorial Authority :
 Rotorua District
 Date of Photography 2001
 Boundaries are Indicative Only
 John Taris Graphics Consultancy
 & Flaherty Survey & Mapping Ltd

Bed of Lake Rotorua
 (Shown A hereon containing 8088.0000ha more or less being Sec 1 SO 338985)

Area referred to in the Deed of Settlement between
 Te Arawa and the Crown

Approved as to Boundaries:
Roku Mihinui October 2004
 For and on behalf of Te Arawa
Kay Harrison October 2004
 For and on behalf of the Crown

8 of 23 | SO 340310



South Auckland Land District
 Territorial Authority :
 Rotorua District
 Date of Photography 2001
 Boundaries are Indicative Only
 John Taris Graphics Consultancy
 & Flaherty Survey & Mapping Ltd

Bed of Lake Rotorua
 (Shown A hereon containing 8088.0000ha more or less being Sec 1 SO 338985)

Area referred to in the Deed of Settlement between
 Te Arawa and the Crown

Approved as to Boundaries:
Roku Mihinui October 2004
 For and on behalf of Te Arawa
Kay Harrison October 2004
 For and on behalf of the Crown

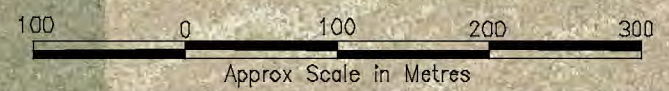
9 of 23 SO 340310



LEGEND

- Natural Cadastral Boundary – as shown on SO 338985 (subject to natural movement of the Lake Shore)
- Right Lined Cadastral Boundary (not moveable)
- Lake Shore (as depicted from photography hereon)

Stratum Parcel: The upper limit of Area A is the bed of Lake Rotorua



South Auckland Land District
 Territorial Authority :
 Rotorua District
 Date of Photography 2001
 Boundaries are Indicative Only
 John Taris Graphics Consultancy
 & Flaherty Survey & Mapping Ltd

Bed of Lake Rotorua
 (Shown A hereon containing 8088.0000ha more or less being Sec 1 SO 338985)

Area referred to in the Deed of Settlement between
 Te Arawa and the Crown

Approved as to Boundaries:
Roku Mihinui October 2004
 For and on behalf of Te Arawa
Kay Harrison October 2004
 For and on behalf of the Crown

10 of 23 SO 340310

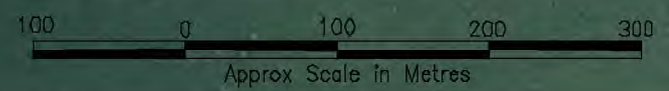


(A)
Lake Rotorua

LEGEND

- Natural Cadastral Boundary – as shown on SO 338985 (subject to natural movement of the Lake Shore)
- Right Lined Cadastral Boundary (not moveable)
- Lake Shore (as depicted from photography hereon)

Stratum Parcel: The upper limit of Area A is the bed of Lake Rotorua



South Auckland Land District
Territorial Authority :
Rotorua District
Date of Photography 2001
Boundaries are Indicative Only

John Taris Graphics Consultancy
& Flaherty Survey & Mapping Ltd

Bed of Lake Rotorua
(Shown A hereon containing 8088.0000ha more or less being Sec 1 SO 338985)

Area referred to in the Deed of Settlement between
Te Arawa and the Crown

Approved as to Boundaries:
Roku Mihiniui October 2004
For and on behalf of Te Arawa
Kay Harrison October 2004
For and on behalf of the Crown

11 of 23 SO 340310