

# TE HUATA MARINE FARM - AQUACULTURE ADAPTIVE MANAGEMENT PLANNING FRAMEWORK

## INTRODUCTION

A key component of the Te Huata Marine Farm project is the establishment of an Adaptive Management Planning Panel (Te Huata Sea Farms Panels) to provide both governance and technical advice and guidance on the development and operation of the marine farm, including ongoing monitoring and adaptive management measures that may be required for the period of the consent.

## ADAPTIVE MANAGEMENT PLANNING FRAMEWORK - PANELS

The purpose of the Adaptive Management Planning Framework is to provide a collaborative group of experienced practitioners and technical experts with the expertise needed to govern, develop, and review the engineering design of the marine farm. This includes the development and implementation protocols that sit alongside a staging plan, and management and monitoring plans based on an adaptive management planning approach – in order to meet the regulatory requirements of the resource consent activities and the associated conditions of consent.

The Adaptive Management Planning Framework will comprise of two 'Panels'.

Sea Farms Governance Panel (SFGP) – responsible for the governance of the project, specifically the outcomes being sought by the resource consent and ongoing compliance with consent conditions. The SFGP Membership will include representatives from:

- Te Whanau-a-Apanui – Iwi Representative
- Te Huata Sea Farms – Hapu Representatives - Consent holder (the Hapu)
- BOPRC – Senior Executive
- MPI – Senior Executive
- DOC – Senior Executive
- MfE – Senior Executive

It should be noted, the underpinning principles for the panel are founded in the relationship agreements Te Whanau-a-Apanui have agreed to with the Crown entities represented, designed for purposes like this, in a post settlement environment.

Sea Farms Technical Advisory Panel (SFTAP) – responsible for developing solutions / providing technical advice to the SFGP regarding the design, operation, and monitoring of marine farming activities within the adaptive management planning framework. In conjunction with Te Huata Sea Farms, they will also be responsible for supporting Te Huata Sea Farms in the preparation of annual monitoring reports and collating monitoring data. This also includes supporting any requirements to initiate and implement adaptive management actions per the direction of the SFGP.

Membership of the SFTAP will include:

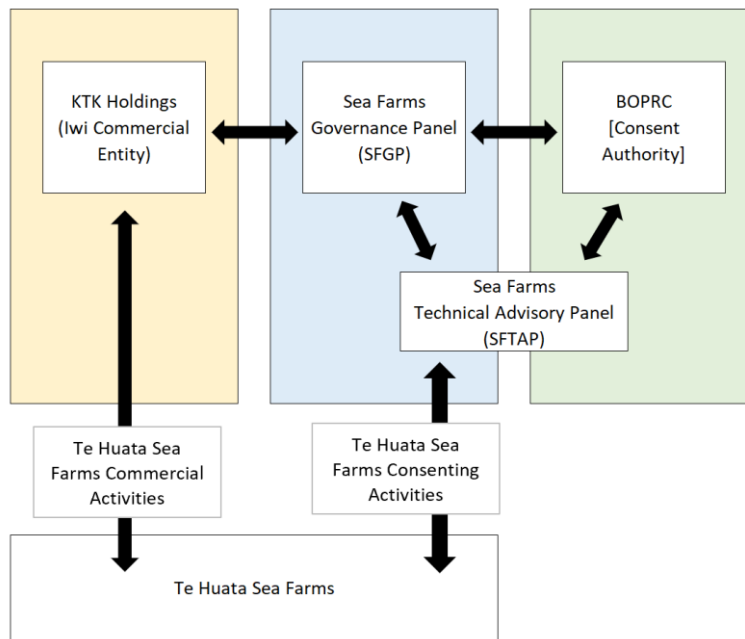
- Te Whanau a Apanui [Tangata whenua]
- Marine farming technical expert/s
- Marine structures engineer/s
- Marine ecologist/s
- Hydrology / coastal scientist/s
- Other experts (as required)

The SFTAP will develop and review the engineering design details for proposed marine farming structures, review management plans and where necessary provide written advice to the SFGP on whether amendments are required.

The SFTAP will also review the results of monitoring activities and where necessary provide advice to the SFGP on whether the monitoring programme needs to be amended or where adaptive management measures are required to address adverse effects of marine farming activities.

The role of the SFTAP will also be to provide advice on any other technical matters sought by the SFGP. If necessary, the SFTAP may engage the services of other experts where the group members do not have the necessary expertise.

## ADAPTIVE MANAGEMENT FRAMEWORK STRUCTURE



## ADAPTIVE MANAGEMENT FRAMEWORK FEATURES

The consent holder (KTK Hapu Holdings) will utilize the framework outlined above, and in particular the expertise of the SFTAP, to deliver the following.

### Marine Farm Design and Layout

Prior to the implementation of each stage of the marine farm development, engineering details are required to be prepared detailing the proposed location, area, layout, structures, density and species.

### Baseline Monitoring

Prior to the implementation of each stage of the marine farm development, where necessary, baseline monitoring shall be undertaken. The baseline monitoring shall include:

- Water quality attributes
- Survey of benthic communities

A baseline monitoring report shall be prepared to present and discuss the results of baseline monitoring and provide recommendations on any amendments to the proposed staging or monitoring parameters detailed in the monitoring plan.

### Management Plans

The following management plans are proposed.

- Environmental Management and Monitoring Plan (EMMP)
- Biosecurity Management Plan
- Marine Mammal Management Plan

The format and content of the management plans will be detailed in the resource consent conditions.

### Ongoing Monitoring

Monitoring carried out in accordance with the EMMP. The purpose of the ongoing monitoring is to effectively monitor the environmental effects (including effects on fisheries resources) of the proposed marine farm. Monitoring will include:

- Ongoing water column and benthic surveys,
- Monitoring of the settlement of lobster pueruli.
- Other monitoring parameters recommended by SFTAP

### Reporting

Annual report detailing the following:

- Summary of the monitoring undertaken
- Summary of the adaptive management actions carried out and the results of monitoring after the adaptive management actions have been completed; and
- Summary of the assurance monitoring completed and an evaluation of whether the biological or physical receiving environment is being influenced by the marine activities, outside those expected by the activity.