



Rangitāiki-Tarawera Rivers Scheme Advisory Group meeting

**Wednesday 14 September 2022
10am**

Mātaatua Room, Bay of Plenty
Regional Council Office
5 Quay Street
Whakatāne

Rangitāiki-Tarawera Rivers Scheme Advisory Group Meeting Wednesday 14 September 2022 at 10am

Agenda

1	Welcome	
2	Apologies	
3	Notes of previous meeting held 6 May 2022	4
4	Matters arising from previous meeting	4
5	Scheme annual report 2021-2022	13
6	Capital work programme	19
7	Maintenance work programme	21
8	Rangitāiki River Forum update	28
9	Asset management planning	32
10	General business	35
	a. Gravel management report	
	b. General business report	
	c. Communications update – webpage demonstration	
11	Public forum	
12	Meeting closure	

Notes of the Rangitāiki-Tarawera Rivers Scheme Advisory Group meeting held at Bay of Plenty Regional Council's Whakatāne office, on 6 May 2022, commencing at 10am

Chair:	Councillor Iti
Advisory Group:	Alan Law, Heyden Johnston, Leeann Waaka, Peter Askey, Shona Pedersen, Councillor Alison Silcock (Whakatāne District Council)
BOPRC Councillors:	Councillor Bill Clark
BOPRC Staff:	Chris Ingle (General Manager Integrated Catchments), Kirsty Brown (Rivers and Drainage Assets Manager), Karen Scheffer (Acting Asset Management Coordinator), Bruce Crabbe (Rivers and Drainage Operations Manager), Mark Townsend (Engineering Manager), Charles Harley (Team Leader Eastern Catchments), Paula Chapman (Project Manager), Kelly Sarjeant (Executive Assistant), Andy Dixon (Tax and Treasury Specialist)
Apologies:	Linda Virbickas, Jane Waldon (Independent Secretariat), Michael Van Tilburg (Whakatāne District Council), Andrew Pawson (Area Engineer)

1 Welcome

Councillor Iti opened the meeting.

Additional items for general business:

- Rainfall data display (Mark Townsend).
- Council's capital investments (Alan Law).

2 Apologies

Apologies were received as recorded above.

3 Notes of previous meeting held 14 October 2021

Resolved

That the Rangitāiki-Tarawera Rivers Scheme Advisory Group:

Confirm the notes of the meeting held 14 October 2021 as a true and correct record.

**Clark/Askey
CARRIED**

4 Matters arising from previous meeting

- Leeann Waaka noted incorrect spelling of surname in previous meeting notes.

- Alison Silcock queried whether a media release on the Kopeopeo West Canal floodgate trial had been actioned. Bruce Crabbe responded information had been shared via social media but not a media release.
- Councillor Clark sought clarification on the Trustpower annual contribution amount as per item 12.1 of the General Business Report. Kirsty Brown responded and clarified this point.
- Councillor Iiti sought clarification on the flood repair work and the 20-year loan term from the minutes of previous meeting. Kirsty Brown responded, noting that loan funding term was presented to Council under the Annual Plan process, who decided to investigate further at next LTP.
- Kirsty Brown provided an overview of the regulations for whitebait stands, noting that:
 - Regulations of whitebait stands falls under the Resource Management Act 1991 as a structure in rivers/estuaries which is the responsibility of the Consents and Compliance teams at BOPRC. Whitebait stands are a permitted activity but require resource consent if in the coastal marine area.
 - The Flood Protection and Drainage Bylaws 2020 do not control structures in the river but if a structure is connected to a stopbank it would need bylaw authority.
 - Individuals should speak to the Department of Conservation for whitebait fishing regulations.

ACTION: To circulate regulation information relating to whitebait stands to group members.

Discussion followed around whitebait stands, bylaws with structures and BOPRC assets.

ACTION: Staff to approach the Consents team regarding whitebait stand mentioned by Heyden Johnston (completed).

5 Capital work programme

Mark Townsend spoke to the agenda pack report and delivered a presentation focusing on the scheme's capital works.

Key points:

- The last 500 m of Rangitāiki Floodway Stage 6C is on track to be completed by April 2022 noting that Covid-19 has impacted contractor's staff as well as material supply.
- Visual concepts of the floodway stoplogs/swing gates shown and explained.
- Rangitāiki Spillway design and drafting of the resource consent application is underway. Construction now expected to start late 2022.
- The preferred option for the College Road floodwall has been selected and consultation with landowners has been completed. Drafting of the resource consent application is underway.
- Investigations of the Tarawera River left bank stopbank, downstream of Braemar Road, reveal an upgrade is needed to achieve 1% AEP level of service. Construction phase is scheduled for February to May 2023.

- Physical works for the Lower Rangitāiki Stopbank upgrade (left bank) have been deferred to 2022-23 pending approval from Council for additional funding. Awaiting final sign off from affected party. Construction is programmed for September 2022 to March 2023.

Discussion/questions:

- Discussion followed around the Spillway gates including health and safety around guard railings, variations on riverbed levels and capacity, and full control and back-ups being in place for the gates (default to close, generators).
- Peter Askey queried whether the Spillway was future proofed e.g. varying capacity. Mark Townsend responded that there would be long term capping of the amount of flow down the spillway and that arrangements are in place with Matahina Dam for flood storage. He advised that discussions are taking place around using Aniwhenua Dam for flood storage as well.
- Councillor Clark queried how much attention and budget has been allowed on adequate fish passage, habitat etc. on the Rangitāiki. Bruce Crabbe responded that they have been very mindful and look for any opportunity available for enhancing habitats. He noted that they can be restrained in narrow riverbank areas however berm areas are positioned at the right level for inanga spawning and in the dryer months tide gates remain open for as long as possible to maximise indigenous habitat. Bruce referred to the Kopeopeo system which is very successful with the tidal flow and many native fish.
- Councillor Clark queried if independent freshwater marine biologists have been invited to comment on works. Bruce advised that they work closely with Council's freshwater scientists in this space.
- Councillor Clark complimented the College Road floodwall upgrade, feedback has been positive. Leeann Waaka commented that the community felt like they were part of the process and were kept well informed. Mark Townsend acknowledged the great job that Peter Hay did leading this project.
- Alan Law raised concerns (in relation to the Lower Rangitāiki Stopbank Upgrade) that he met with a rate payer/owner of a residential section complaining they had no notification for eight months and wanted an update.

ACTION: Mark Townsend to follow up.

6 Maintenance work programme

Bruce Crabbe spoke to the agenda pack report highlighting a range of operational and maintenance works being undertaken within the scheme.

Key points:

- Annual flood damage repairs to three sites on the Rangitāiki River and two on the Tarawera River, noting that the annual flood repair allowance of \$200,000 is already over-subscribed for this financial year.
- Rock replenishment in the lower reach on Reid's Central Canal have been completed.
- Ongoing work repairing high priority defects identified through asset condition assessments, including tree removal and stopbank restoration at Edgecumbe rugby field.
- Collaboration with iwi and hapū on works planned in their rohe.

- Working with the Edgecumbe community on tree removal works which pose a risk to stopbank integrity.
- Funding received from Trustpower's Environmental Fund for \$15,000 and \$8,000 respectively which goes towards buying native plants, establish native habitat, etc.
- Rangitāiki Drainage Scheme Advisory Group meeting is to be held on 7 June 2022.
- Tree removal work photos shown, and the work involved discussed.
- A stockpile of 5,000 tonnes has been established at Hydro Road which supports community resilience by having material on hand in flood events and following repairs.

Discussion/questions:

- Discussion followed on the Trustpower Funding which is provided for community based environmental/cultural projects on the river/awa.
- Councillor Clark queried the rock pile funding at the Hydro Road site. Bruce Crabbe responded that it will be in place by the end of the financial year.
- Allison Silcock queried rock pile procurement from the quarries. Bruce confirmed that procurement processes are in place allowing procurement to occur directly from the quarries. He noted that the stockpile is available for the Whakatāne District Council to use in emergencies, provided it is replenished as soon as practicable.
- Tree removal was discussed. Bruce advised that trees planted close to stopbanks in high risk areas have been identified and investigated, noting healthy trees may not necessarily be removed.
- Councillor Clark queried whether the stockpile of 5,000 tonnes is adequate. Bruce responded that it would not be adequate for everything but it is a great start. Bruce noted that rock supply generally is much better than in previous years.
- Heyden Johnston queried whether Council has considered purchasing a quarry for own supply. Paula Chapman advised this was considered during developing the Rock Supply Strategy and that Council remains open the idea should the opportunity arise.

Bruce Crabbe left the meeting at 11.15am.

7 Changes to the way BOPRC collects its rates

Kirsty Brown and Andy Dixon spoke to the agenda report and provided a presentation.

Key points:

- From August 2022 the BOPRC will start collecting its own rates. Primary reason for the change is to become more transparent and accountable for the work that BOPRC does.
- It has been estimated that there will be a saving of \$6 million over 10 years by moving to self-collection.
- This will also enable Council to control remission and postponements available to ratepayers, penalty schedules and payments plans/direct debits to spread payments.
- Four other regional councils collect their own rates. Council is following Waikato Regional Council's format.

Discussion/questions:

- Discussion was had on payment plans and how these will work. Councillor Iiti commented there will be good communication that payment plans are available and added that this system will be a good way to show dividends from Quayside.
- Alan Law complimented Council on this initiative, noting that he can see the major cost savings.

8 Finance report

Kirsty Brown spoke to the Finance Report and provided an overview of the scheme's revenue and expenditure for the six months ending 31 December 2021.

Key points:

- **Total revenue** was \$11,000 lower than budget.
- **Operating expenditure** was \$99,000 lower than budget.
- Total **capital revenue** was \$577,000 lower than budget due to delay in the central government funding projects
- **Capital expenditure** was \$2 million higher.
- **Total reserves funds** available to the Scheme as at 31 December 2021 was \$3.3 million.
- The **loans** closing balance was \$38.5 million.
- The scheme's **asset valuation** was \$126 million.

Discussion/questions:

- Discussion followed regarding opportunities to share information and educate the public particularly around the Rangitāiki Floodway and the Flood Protection and Drainage Bylaws.
- Councillor Clark queried the investment income split not being shown, Andy Dixon provided a detailed explanation. Discussion followed around shielding rating schemes from interest rises and dips.
- Leeann Waaka commented on a roadshow as a way of getting PR on evacuation plans etc.

9 Update from the Rangitāiki River Forum

Councillor Clark provided an update to group members.

Key points:

- Jane Waldon has been appointed as Independent Secretariat to support iwi members of river forums and will be attending advisory group meetings to support communication flow between the two groups.
- Charles Harley advised that Landcare Trust have created a Catchment Coordinator role in the BOP region for a fixed term of three years. The successful candidate is to be confirmed.

Discussion:

- Alan Law commented on the need for everyone to work together in the rivers and drainage space and making sure this is done sensitively and carefully.
- Discussion followed on the environmental and cultural shifts underway and the need for effective communication and finding a collective way forward.
- Councillor Clark queried what constitutes a wetland. Charles Harley advised that a definition has come out and seeking clarification from Ministry for the Environment.

10 Online survey feedback and current terms of reference review

Kirsty Brown spoke to her report and presentation.

Key points:

- 18 out of 34 members across forums responded to the survey. Three out of seven members of this forum completed the survey.
- Improvements are being made based on survey results including:
 - Information sharing e.g. website notifications.
 - Improving the connection between the Rangitāiki River Forum and the advisory group.
 - Addressing other concerns e.g. barriers to meeting attendance.
- A Council endorsed review of the advisory groups Terms of Reference (TOR) is underway. The purpose of the review is to ensure the groups remain appropriate and to consider how they might assist with achieving LTP strategic impacts areas of Partnership with Māori, Climate Change and Community Participation.
- A draft TOR will be circulated to advisory group members for comment.

Questions/Discussion:

- Councillor Clark commented on the lack of participants in the survey suggesting a roundtable discussion would have been better. Alan Law queried whether this could still happen. Kirsty responded that this could be actioned.
- Alan Law queried what other issues were raised in the open comments section. Kirsty and Alan to discuss after the meeting.
- Discussion followed on the need for continual improvement and the benefit of a roundtable discussion. This was supported by ground members.

**Clark/Askey
CARRIED**

ACTION: For staff to organise a workshop facilitated by BOPRC Engagement Team following the September 2022 meeting.

11 General business**11.1 Gravel management report**

Paula Chapman spoke to the agenda report, noting that some numbers now vary from the original report.

Key points:

- A collaboration plan with Ngāti Manawa is being developed to build capacity, share information and come together more frequently. Bruce Crabbe's team have been working much closer in operational work which has been positive.
- Late last year a meeting with held with Council, Ngāti Manawa and contractors to talk about gravel extraction on the Horomanga River. Ngāti Manawa are particularly interested in how extraction work might to support the enhancement and development of tuna habitat.
- Priorities for Ngāti Manawa have been around their Covid-19 response. Once they have readied their resources, discussions will move forward.

Questions/Discussion:

- Shona Pederson raised a concern of gravel build up around Galatea Road Bridge. Paula Chapman responded Whakatane District Council are working on proposal for the bridge as the bridge was their asset.
- Alison Silcock requested an update on the extraction at Rabbit Bridge. Charles Harley noted that a consent has been lodged by Southern Generation Limited Partnership and is going through the process.

11.2 General business report

Kirsty Brown spoke to the report provided in the agenda pack.

Key points:Infrastructure Insurance

Aon and Tonkin & Taylor Ltd assessed the flood risk for the scheme and whether the insurance premium was efficient. The conclusion was that it is best to stay with current commercial insurance. The figures of self-insuring vs the current infrastructure insurance premium and cover options were discussed.

Grazing Licence Renewal

Staff are working towards renewing the currently 32 grazing licences which are due to expire June 2022. This scheme has 19 licences in place covering 135 hectares. These will be renewed for a further 9 years.

Review of the April 2017 Flood Repair Project

Christensen Consulting was engaged by Council to review the programme of flood repair work completed following the April 2017 flood event. Recommendations from this report suggest more involvement from wider stakeholders and technical disciplines and using natural based flood prevention measures.

ACTION: A copy of the final report to be circulated to advisory group members.

Questions:

Councillor Clark queried what the prognosis going forward with insurance may be in terms of giving any indication in relation to climate change. Kirsty responded that latest feedback was that the previously hard market is softening but there has been no indication of the implications of climate change.

ACTION: Copy of the email outlining the outcomes of the infrastructure insurance review to be re-circulated to group members.

11.3 Communications update

In Laura Albrey's absence, Kirsty Brown provide an update of communication improvements, encouraging members to sign up to scheme web pages to receive notifications.

Alan Law queried who the Rural and Environmental Organisation Forum were.

ACTION Staff to confirm Rural and Environmental Organisation Forum (completed).

11.4 Feedback on status report

Kirsty Brown sought feedback from members on the new reporting format for the Capital and Operations programmes. Members' feedback was positive and included comments such as it gives a good general overview and is easy to read.

12 Public forum

General business:

Mark Townsend demonstrated a new dashboard to access rainfall information on the BOPRC website, advising that the Environmental Data Portal is the most utilised tool on Council's website.

ACTION: Staff to share website data statistics e.g. the areas mainly being accessed.

Alan Law raised a concern over the many new kiwifruit orchards being developed by the river and how Council is managing that risk. Kirsty Brown responded that new orchards within the Bylaws Applicable Areas would require bylaw authority which includes conditions to mitigate the risk.

Councillor Iti thanked everyone for their input and taking the time to attend and closed the meeting with a karakia.

Meeting closed at 12.33pm

Action Sheet

Rangitāiki-Tarawera Rivers Scheme Advisory Group Meeting

6 May 2022

Action	Person Responsible	Completed	Comment
1. Circulate regulations relating to whitebait stands to members	Kirsty Brown	✓	Circulated 06/05/22 (refer A4093723)
2. Approach Consents Team regarding whitebait stand mentioned by Heyden Johnston	Chris Ingle	✓	Heyden Johnston provided with a response (refer A4160254)
3. Update to rate payer/resident regarding the Lower Rangitāiki Stopbank Upgrade Project	Mark Townsend	✓	Jordan Mandery (Civil Construction Engineer) phoned Paul Collins the week following the meeting with an update
4. Organise workshop based on online satisfaction survey to follow on from September advisory group meeting	Kirsty Brown	✓	A one-hour workshop has been scheduled for after the September 2022 meeting
5. Circulate a copy of the Christensen Consulting Ltd final report on the April 2017 Flood Repair project to members	Kirsty Brown	✓	Circulated 06/05/22 (refer A4093723)
6. Circulate AON and Tonkin Taylor Insurance report to members	Kirsty Brown	✓	Circulated 06/05/22 (refer A4093718)
7. Find out who the Rural and Environmental Organisation Forum are	Chris Ingle	✓	Information provided to Alan Law (refer A4185172)
8. Staff to share environmental data portal statistics/usage with members	Mark Townsend	✓	Mark to report back to Advisory Group at September 2022 meeting

Rangitāiki-Tarawera Rivers Scheme

Annual Report 2021-2022

The purpose of this report is to provide an overview of the Rangitāiki-Tarawera Rivers Scheme operational and capital works programmes and finances for 2021-2022

Maintenance programme

Maintenance works comprise activities that ensure the drainage and river flood protection networks are operational and providing the agreed level of service. These activities are programmed through the Rivers and Drainage Asset Management Plan considering asset lifecycle, and maintenance and inspection schedules.

The attached status report summarises programme achievements to 30 June 2022.

Capital programme

The larger multi-year capital works projects have experienced some delays with work being deferred due to additional funding requirements or project complexity. Budget adjustments have been made during the year to allow for scope changes, additional consultation, and the need for additional funding. Some programme slippage has been provided for through carry forward funding recommendations.

The attached status report summarises programme achievements to 30 June 2022.

Financial overview 2021-2022

Attached is the Draft Statement of Revenue and Expense for the Rangitāiki-Tarawera Rivers Scheme for the 12 months ended 30 June 2022.

Key points:

- **Operating revenue** was \$499,000 higher than budget, due to additional insurance recoveries from the 2017 event. Note also that external interest income was significantly lower than budgeted due to lower than budgeted interest rates.
- **Operating expenditure** was \$27,000 higher than budget.
- This resulted in an **operating surplus** of \$472,000
- **Capital revenue** was \$3,177,000 lower than budget, due to not yet being able to claim CIP funding for deferred capital projects (College Road Floodwall and Rangitāiki Floodway)
- **Capital expenditure** was \$576,000 lower than budget, with carry forwards into 2022-2023 proposed for flood repair work and the Rangitāiki Floodway Project.
- Total **reserve fund** opening balance of \$3,301,000 and closing balance of \$3,392,000 (increased by \$91,000)
- **Loan** opening balance of \$39,424,000 and closing balance of \$41,838,000 (increased by \$2,414,000)
- **Asset valuation** as at 1 July 2022 of \$126 million, an increase of \$10.4 million.

Status Report to June 2022

Key Highlights				Status Key
Collaboration with iwi/hapū on river repair and habitat restoration work Rangitāiki Floodway stopbank upgrade work complete Lower Rangitāiki stopbank upgrade (left bank) - design work complete and additional funding approved				Project is on track = Green Project has some issues = Amber Project has serious issues = Red
	Project	2021-2022 Milestones	Comments	Status
Maintenance Programme	River Scheme Management and Maintenance - maintenance works comprise of activities that ensure the drainage and river flood protection networks are operational and providing the agreed level of service.	<ul style="list-style-type: none"> Repairs to five annual flood damage sites – three on the Rangitāiki River and two on the Tarawera River Kopeopeo West Canal – trial of a heavy duty polyethylene floodgate Reid’s Central Canal - rock replenishment in the lower reaches Repairing high priority defects identified through asset condition assessments Implementing the objectives of the river document <i>Te Ara Whānui o Rangitāiki Pathways of the Rangitāiki</i> - fish passage, habitat enhancement and native plantings 	The maintenance programme was delivered on budget and to programme with 99.5% of maintenance, repairs and renewals completed. <u>Updates on key projects:</u> <ul style="list-style-type: none"> The second floodgate on the Kopeopeo West Canal floodgates structure replaced, using HDPE (plastic) materials and incorporating fish passage. Stage 1 of Reid's Central Canal rock replenishment complete, with two more stages to be programmed as budget allows. Rock replenishment completed on the Rangitāiki River left bank at Law's corner. Repair to two high priority defect sites completed (Ngaheu's and Edgecumbe Rugby Grounds). Removal of pest plants and planting of native plants on the left bank of Rangitāiki River below the Te Teko SH bridge undertaken in collaboration with local iwi/hapū with partial funding from the TrustPower Environmental Fund. Multiple river repair and restoration works carried out in Waiohau and Whirinaki/Galatea in close collaboration with local iwi. Floodgated outlet structures on Omeheu Canal (Awaiti Stream) and Reid’s Central Canal (Orini Wetland) replaced. Habitat restoration works carried out at Tarawera River, Old Rangitāiki Channel (Grieg Road), and Horomanga River. 	Green

	Project	2021-2022 Milestones	Comments	Status
Capital Programme	April 2017 Flood Repair Project - six repair sites remain on the Rangitāiki River and are scheduled for completion in the summer of 2021-2022.	Rangitāiki River flood repair sites completed by March 2022	Five sites are scheduled for monitoring and may not require repair and one site (in Waiōhau) is scheduled for completion in March 2023. The April 2017 Flood Repair Project has been closed off and any remaining work (and funding) is being incorporated into the Rivers and Drainage Operations general work programme. Revised Budget \$350,000 Actual Expenditure \$0	Amber
	Rangitāiki Floodway 1. Completion of Stage 6c (stopbank improvements and raising on the right bank SH2/Awakeri Road to McLean Road). 2. Completion of Stage 7 (stopbank improvements and raising between Hydro Road and SH2/Awakeri Road left and right banks). 3. Stoplogs across McLean Road and McCracken Road – design and construction. 4. Spillway construction.	<u>Stage 6c and 7</u> • Completion of the Stage 6c and Stage 7 works that were put on hold over 2021 winter <u>Stoplogs/Swing gates</u> • Roading Authority approval (Whakatāne District Council) • Complete construction <u>Spillway</u> • Resource Consent approval • Complete construction	<ul style="list-style-type: none"> • Stage 6c completed June 2022 • Stage 7 completed February 2022 • <u>Stoplog design and construction</u> delayed. Swing gates are now proposed at these sites with the design now scheduled for completion October 2022, and construction scheduled for completion June 2023. • <u>Spillway design and construction</u> – timeframes for the spillway work were extended due to the complexity involved in modelling and design. Application for resource consent to be lodged in August 2022. Spillway construction is now scheduled to commence December 2022, with project completion June 2023. <p><i>The Rangitāiki Floodway Project will continue into 2022-2023</i></p> <p>Revised Budget \$5,400,000 Actual Expenditure \$4,871,000</p>	Amber
	Rangitāiki Floodwalls - three priority sites were identified as part of this project and two sites are still in progress: 1. East Bank Road (Thornton) – construction commenced April 2021. 2. 87-109 College Road – consultation and design in progress. Construction planned for 2022-2023.	<u>East Bank Road (Thornton) floodwall</u> • Complete construction by October 2021 <u>College Road floodwall</u> • Complete consultation with affected parties • Resource consent application • Design completed by December 2021	East Bank Road construction works are complete College Road design work is complete and resource consent application to be lodged in August 2022. <i>The floodwall remedial project will continue into 2022-2023 with construction of the College Road design.</i> Revised Budget \$626,000 Actual Expenditure \$703,000	Green

	Project	2021-2022 Milestones	Comments	Status
	<p>Tarawera Stopbank Design - the Tarawera River left bank stopbank downstream of SH2/Matatā Road bridge requires upgrading to achieve the 1% AEP level of service. Work this year includes geotechnical assessment and analysis of the sections of stopbank to be upgraded.</p>	<ul style="list-style-type: none"> • Geotechnical assessment • Consultation with affected parties • Resource consent application • Detailed design 	<p>Geotechnical investigations undertaken and design process is underway.</p> <p><i>The Tarawera Stopbank project will continue in 2022-2023 and 2023-2024 with the addition of work on the right bank.</i></p> <p>Revised Budget \$52,000 Actual Expenditure \$110,000</p>	Amber
	<p>Lower Rangitāiki Stopbank Upgrade (left bank) - the Rangitāiki River Capacity Review identified that the stopbank on the left bank of the Rangitāiki River needs raising to achieve the 1% AEP design level. This work involves stopbank raising and geotechnical seepage treatments on the left bank of the Rangitāiki River from the Thornton Road bridge to the residential properties before the boat ramp.</p>	<ul style="list-style-type: none"> • Consultation with affected parties • Cultural Impact Assessment and Archaeological Authority • Resource consent application • Tender in November 2021 • Construction to commence January 2022 	<p>Design completed (with minor geotechnical seepage treatments to be finalised before construction commences).</p> <p>Resource consent application has been lodged.</p> <p>Cost estimates following the initial design phase were significantly more than initial budget requiring approval for additional funding.</p> <p><i>Funding has been secured and project scheduled for construction and completion in 2022-2023.</i></p> <p>Revised Budget \$0 (project deferred pending additional funding) Actual Expenditure \$106,000</p>	Amber

Bay of Plenty Regional Council Toi Moana Statement of Revenue and Expense: Rangitaiki-Tarawera Rivers Scheme (Draft until adopted by Council)

For the 12 months ended 30 June 2022

Line			Variance		Variance comments	2022/23
	Revised Budget	Actual	\$	Variance indicator		Budget
		\$000				\$000
Operating revenue by class						
1	General rates	425	425	0	-	519
2	Targeted rates	4,097	4,097	0	-	4,746
3	External interest income	35	3	(32)	Lower	Lower than budgeted interest rates 12
4	Other revenue	90	633	543	Higher	Additional insurance recoveries for pumping during 2017 event 96
5	Fees and charges	12	0	(12)	Lower	13
7	Investment income	690	690	0	Higher	792
8	Total revenue	5,349	5,848	499	Higher	6,177
Operating expenditure by class						
9	Administration expenses	3	13	(10)	Higher	Rates on College Road land 4
10	Other expenses	452	458	(6)	Higher	Additional infrastructure (for assets) insurance costs offset with lower material costs 2,140
11	Consultancy fees	0	25	(25)	Higher	Geotechnical assessments undertaken 0
12	Contract work	852	1,056	(204)	Higher	Additional work undertaken on identified defects 850
13	Finance costs	878	594	284	Lower	Lower internal interest due to capital underspend 1,114
14	Depreciation & Amortisation	375	299	76	Lower	Lower depreciation due to capital underspend 334
15	Subtotal - expenditure	2,560	2,445	115	Lower	4,441
16	Net overhead charges and recoveries	1,021	1,163	(142)	Higher	Staff time 2,231
17	Total operating expenditure	3,581	3,608	(27)	Higher	5,558
18	Total operating surplus (deficit)	1,768	2,240	472	Favourable	620

Bay of Plenty Regional Council Toi Moana Statement of Revenue and Expense: Rangitaiki-Tarawera Rivers Scheme (Draft until adopted by Council)

For the 12 months ended 30 June 2022

		Variance		Variance comments	2022/23
Revised Budget	Actual	\$	Variance indicator		Budget
					\$000

Capital revenue by class

19	Capital funding	4,347	1,170	(3,177)	Lower	CIP funding for Rangitāiki floodway and floodwalls. Potential claim in 2022/23 to come	406
20	Total capital revenue	4,347	1,170	(3,177)	Lower		406
21	Total surplus (deficit)	6,115	3,410	(2,705)	Unfavourable		1,026

Capital expenditure by project

22	Rangitaiki Floodway	5,400	4,871	(529)	Lower	Proposed carry forward for spillway to 2022/23	2,753
23	Rangitaiki Tarawera Flood Damage Repairs	350	(16)	(366)	Lower	Works deferred. Proposed carry forward	0
24	Rangitaiki Floodwalls	626	703	77	Higher	East Bank Road now complete. College Road consultation and final design progressing.	3,363
25	Rangitaiki River (Stopbank upgrade)	0	106	106	Higher	Consent application has been lodged.	2,859
26	Rangitaiki River modelling	0	29	29	Higher		0
27	Tarawera stopbank construction	52	110	58	Higher	Geotechnical investigations complete and analysis underway.	656
28	Rangitāiki Capacity Review	0	49	49	Higher	Final report received and project complete.	0
29	Total capital expenditure	6,428	5,852	(576)	Lower		9,632

Reserves

	Opening Balance \$000	Movement \$000	Closing Balance \$000		
30	Flood Damage Reserve	341	238	579	Available
31	Asset Replacement Reserve	1,405	(394)	1,011	Available
32	Works Reserve	1,555	247	1,802	Available
33	Total Reserves	3,301	91	3,392	Funds available

34	Internal Loans	39,424	2,414	41,838
----	-----------------------	--------	-------	--------

	1/07/2021 \$000	Movement \$000	1/07/2022 \$000	
35	Asset Revaluation	115,777	10,477	126,254

Capital Works Programme 2022-2023

The following table outlines the Rangitāiki-Tarawera Rivers Scheme capital work programme for 2022-2023

Budget figures are from the Annual Plan 2022-2023. There are some proposed changes to these figures, incorporating unspent 2021-2022 budgets being carried forward.

Rangitāiki-Tarawera Rivers Scheme Capital Budget for 2022-2023 is \$9,632,000

Project name and background	Budget Annual Plan 2022-2023	Milestones 2022-2023
<p>Rangitāiki Floodway</p> <p>The Rangitāiki Floodway is designed to take pressure off the Rangitāiki River during flood events by diverting some of its flow. It is a multi-staged project that started in 2011 and was initially scheduled for completion in 2021-2022.</p> <p>The stopbank upgrade work was completed in 2021-2022, however timeframes for the spillway work were extended due to the complexity involved in the modelling and design. Project now scheduled for completion in 2022-2023.</p> <p><i>Central Government Climate Resilience Funding has been approved for this project. The funding will contribute up to \$2,100,000 of the spillway physical works costs.</i></p> <p>For information and updates visit the Project Page or www.boprc.govt.nz/our-projects/rangitaiki-floodway-and-spillway</p>	<p>\$2,753,000</p>	<p>Swing Gates</p> <ul style="list-style-type: none"> • Design completed October 2022 • Construction completed May 2023 <p>Spillway</p> <ul style="list-style-type: none"> • Design completed September 2022 • Commence construction December 2022 • Project completion September 2023
<p>Rangitāiki Floodwalls</p> <p>Three priority sites were identified as part of this project.</p> <p>Greig Road and East Bank Road (Thornton) floodwalls completed.</p> <p>87-109 College Road in progress with consultation and design complete, and construction scheduled for 2022-2023.</p>	<p>\$3,363,000</p>	<p>College Road floodwall</p> <ul style="list-style-type: none"> • Commence construction October 2022 • Project completion June 2023

Project name and background	Budget Annual Plan 2022-2023	Milestones 2022-2023
<p>Lower Rangitāiki Stopbank Upgrade (left bank)</p> <p>The Rangitāiki River Capacity Review identified that the stopbank on the left bank of the Rangitāiki River needs raising to achieve the 1% AEP design level.</p> <p>The upgrade involves stopbank raising and geotechnical seepage treatments on the left bank of the Rangitāiki River from the Thornton Road bridge to the residential properties before the boat ramp.</p> <p>Initially planned for 2020-2021, the project was deferred after the initial design phase when cost estimates were significantly more than the initial budget.</p> <p>With additional funding approved construction is scheduled in 2022-2023.</p>	<p>\$2,859,000</p>	<ul style="list-style-type: none"> • Cultural Impact Assessment and Archaeological Authority July 2022 • Commence construction October 2022 • Project completion June 2023
<p>Tarawera River Stopbank</p> <p>The Tarawera River stopbank downstream of SH2/ Matatā Road bridge requires upgrading to achieve the 1% AEP level of service.</p> <p>In 2021-2022 the focus was on geotechnical investigations on the left bank, with some further testing and analysis required this year to enable detailed design.</p> <p>Work this year also includes geotechnical investigations, analysis, and detailed design for the right bank.</p> <p>The construction phase of this project will continue in to 2023-2024.</p>	<p>\$656,000</p>	<p>Tarawera Left Bank</p> <ul style="list-style-type: none"> • Detailed design completed November 2022 • Ongoing consultation with affected parties • Resource consent application (if required) • Commence construction March 2023 <p>Tarawera Right Bank</p> <ul style="list-style-type: none"> • Geotechnical investigation completed April 2023 • Detailed design completed August 2023

Maintenance Programme 2022-2023

The purpose of this report is to provide an overview of the Rangitāiki-Tarawera Rivers Scheme maintenance programme for 2022-2023

Maintenance programme

Maintenance works comprise activities that ensure the drainage, pumping and river flood protection networks are operational and providing the agreed level of service. These activities are programmed through the Rivers and Drainage Asset Management Plan, considering asset lifecycles, and maintenance and inspection schedules. Maintenance programme budgets are set during the Long Term Plan and Annual Plan processes.

This year's maintenance programme includes four high priority asset defect repairs with an estimated combined value of \$230,000 that is unbudgeted. One of the sites is planned to coincide with a capital project (College Road floodwall replacement) to minimise disturbance to adjoining landowners.

Scheme maintenance work includes:

- Old Rangitāiki Channel pump station - operation, weed clearance, inspections, and maintenance
- culverts and floodgates - inspections and maintenance
- stopbanks - inspections, maintenance, repairs, pest control
- river maintenance - pest plant control, vegetation maintenance, gravel beach shaping and overflow depressions, and habitat enhancement
- erosion control - rock refurbishment, edge planting, trenched willows, willow and vegetation maintenance
- annual flood damage repairs and flood response activities
- repairs to defects identified through asset condition inspections and assessments

Key projects in 2022-2023:

- Upgrade switchboard and electronics on Old Rangitāiki Channel pump station.
- Repairs to seven Rangitāiki River annual flood damage sites.
- Repairing four high priority defects identified through asset condition inspections:
 - 26 East Bank Road – remediate seepage issues and repair culvert and retaining wall
 - College Road Edgecumbe – remove tree stumps, remediate and recompact site
 - Main Street Edgecumbe (Nic's Auto) - remove five tree stumps, remediate and recompact site
 - Eruera Hot Spot, Te Teko Road – remove 150 metres of shelter belt impacting stopbank security (this is Stage 1 of a multi-staged repair process)
- Ongoing control of rabbits and pest plants and clearing of fly tipping.
- Working collaboratively with iwi/hapū including Rangitāiki Hapū Coalition, Ngāti Manawa, Ngati Haka Patuheuheu and Ngati Rangitahi.
- Implementing the objectives of the Rangitāiki River Forum, contained within their river document [Te Ara Whānui o Rangitāiki Pathways of the Rangitāiki](#). Particularly relating to:
 - protecting tuna (including enhancement and restoration of their habitat and migration paths) and creating, protecting, and enhancing habitats that support indigenous species (work includes fish passage through structures, habitat enhancement and native plantings); and
 - respecting the naturalness of the river landscape.

Winter 2022 – how wet is wet?

The Bay of Plenty has had a wet first two months of the winter season, but just how wet has it been and is it unusual?

At the start winter (June 2022) rainfall across the Bay of Plenty was near average for the year, now at the end of July rainfalls are between 10-50% above normal with both June and July showing above normal monthly rainfalls in response to the frequent bands of rain passing over the region.

July was notable for seeing more than double its normal recorded rainfall for the month across the region, with Edgecumbe being notable for have nearly three times its norm. Rainfall totals for the month are July are provided in Figure 1.

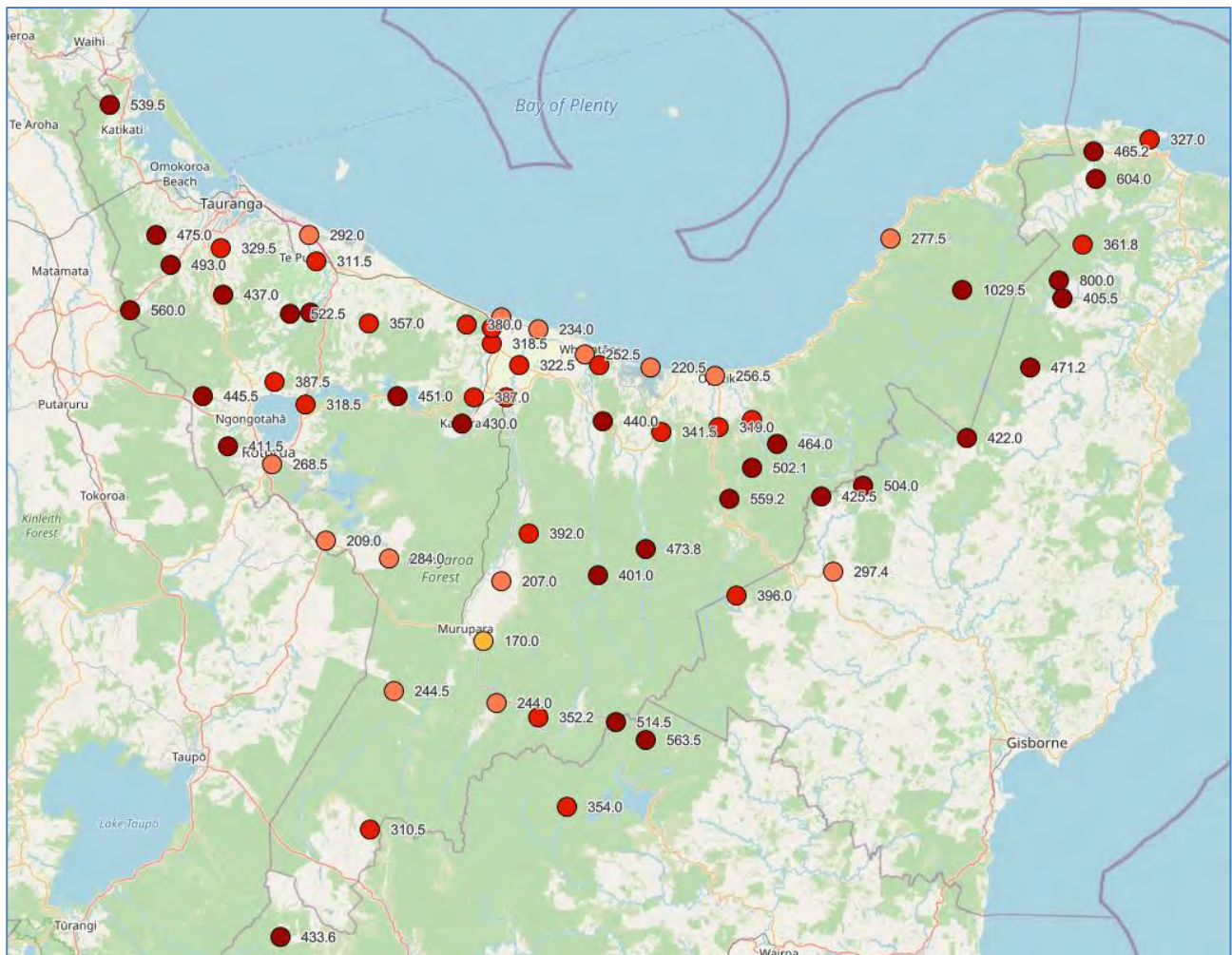


Figure 1: July 2022 rainfall totals (mm)

To provide context of how wet it has been we can compare the previous three-monthly rainfall totals against the last 30 years for the same period and measure its deviation from normal, Figure 2. The general observation is that it has been extremely wet for the region from the lower Rangitāiki Plains westward and very wet for the remainder of the region. The last time these sorts of levels were seen was in the winter of 2017, Figure 3.

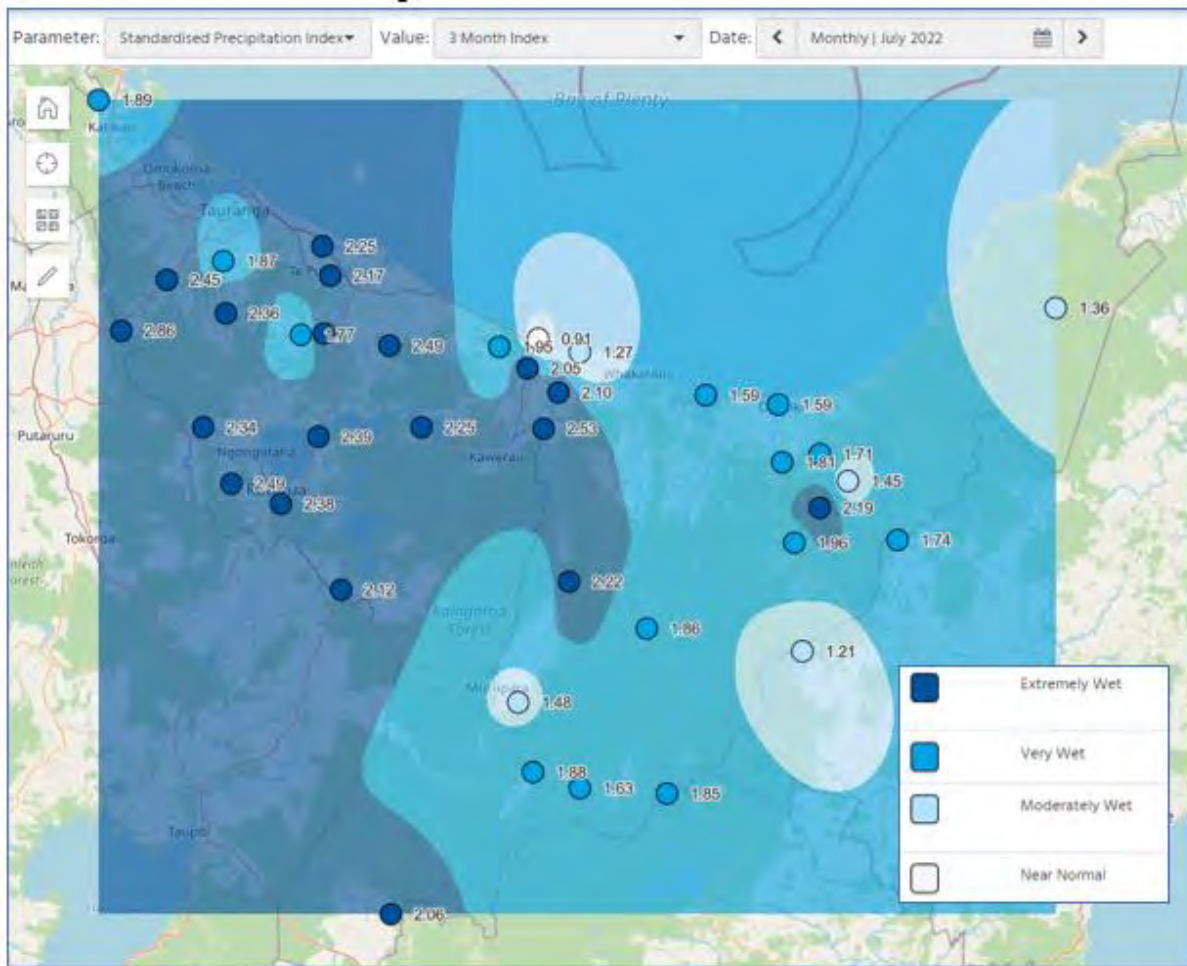


Figure 2: 3-month rainfall deviation from normal

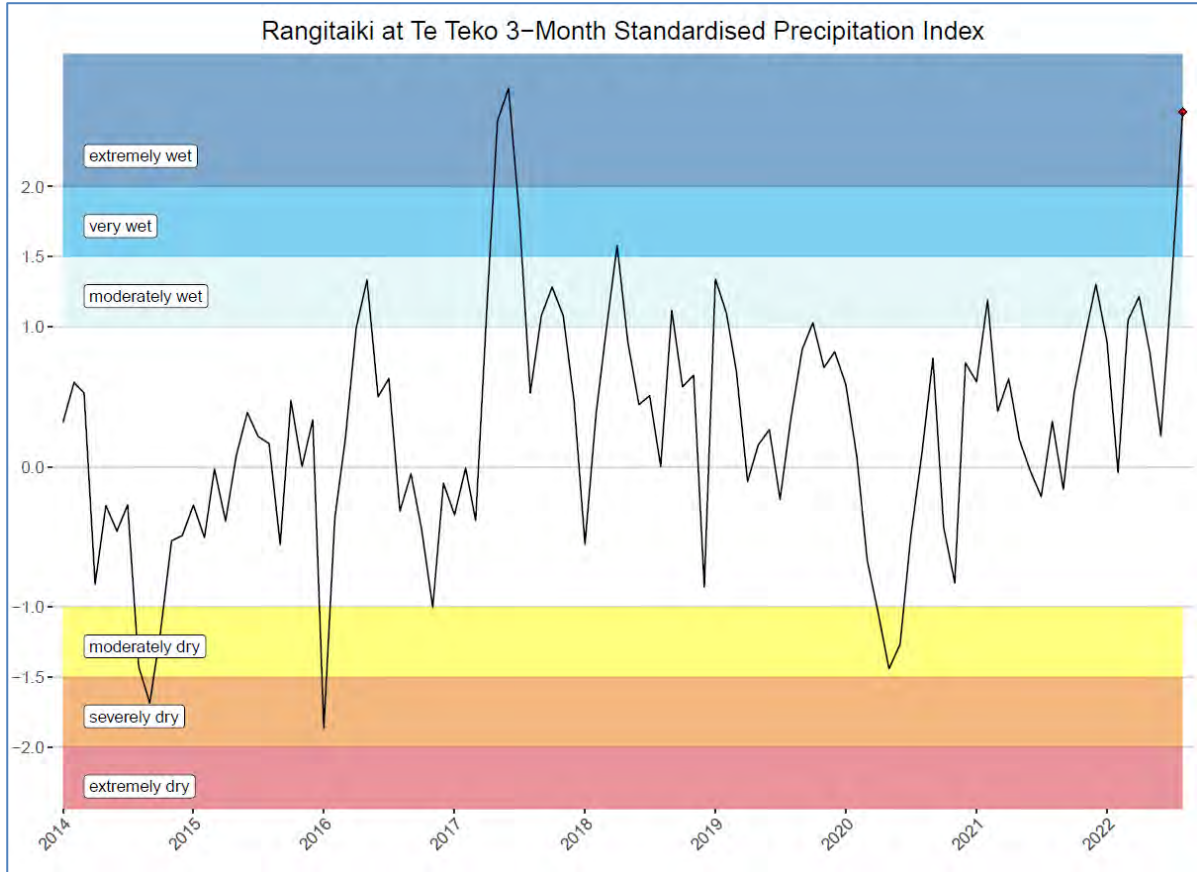


Figure 3: Rangitaiki at Te Teko historical rainfall deviations from normal

Suffice to say, teams within Bay of Plenty Regional Council have been flat out for weeks issuing flood management alerts and attending to drainage and pumping networks including running additional mobile pumps where extra is needed. There is also a lot of riverbank erosion becoming evident in many of the rivers we manage as the river levels have been elevated for weeks. Frequently, repair works are also not possible straight away as ground conditions are usually too wet and soft for heavy machinery to access sites.

We should all be aware that soil moisture levels are high and any significant rain in the coming months may result in an increased chance of resulting flooding in surface areas and rivers.

Maintenance programme budget 2022-2023

A budget summary table for the Rangitāiki-Tarawera Rivers Scheme maintenance programme is shown below followed by a more detailed breakdown of the programme with estimated costs by type of work. The annual budget figures include operational costs only and exclude non-operational costs (e.g. debt servicing and infrastructural asset insurance).

Rangitāiki-Tarawera Rivers Scheme Maintenance Programme 2022-2023		
Rangitāiki River		Annual Budget (\$)
	General	16,500
	Lower Rangitāiki River (Mouth to Matahina)	403,900
	Upper Rangitāiki River and Tributaries	597,500
	TOTAL RANGITAIKI	1,017,900
Tarawera River		
	Mouth to Kawerau	99,800
	Major canals, pump station and floodgates	54,830
	TOTAL TARAWERA	154,630
	ANNUAL FLOOD DAMAGE ALLOWANCE	213,000
RANGITAIKI-TARAWERA TOTAL		1,385,530

Rangitāiki-Tarawera Rivers Scheme - 2022-2023 Maintenance Programme Summary

Date: 25/08/2022

Objective ID: A4132529

	Reach	Work Type	Location	Annual Budget	Job Estimate	Status
1	General					
2		Annual Flood Damage Works		\$213,000		
3	Rangitāiki River	R2	Reinstate berm/rock lining 60 metres (Mapou Marae)	LB 20.3	\$52,000	
4	Rangitāiki River	R5	Rock groynes/lining 20 metres (Ngati Manawa farms)	RB 91.9	\$17,400	
5	Rangitāiki River	R5	Rock groynes/lining 20 metres (Cobbs)	RB 82.6	\$19,000	
6	Rangitāiki River	R5	Rock groynes/lining 30 lineal metres (Cobbs)	RB 81.9	\$26,000	
7	Rangitāiki River	R5	Rock groynes/lining 15 lineal metres (Ngati Manawa farms)	RB 91.4	\$14,000	
8	Tarawera River	R9	Upstream of SH30 Bridge	LB 18.2		On Hold
9	Rangitāiki River	R5	Strengthen willows with rock groynes, 100 metres (M Wilson)	RB 88.3	\$50,000	
10	Tarawera River	R8	Downstream of SH30 Bridge 40 lineal metres	RB 18.1		On Hold
11	Rangitāiki River	R2	Rock lining, 80 lineal meters (Hunia)	R/B22.3		Investigate
12	Rangitāiki River	R4	Rock groynes/lining, 50 lineal metres (C Wilson)	RB 47.5	\$40,000	
13		Subtotal			\$218,400	
14						
15	Rangitāiki River	R1&2	Condition Assessment Defect Repairs			
16	26 East Bank Rd	R1	Repair seepage, culvert, retaining wall (Quin)	R/B 2.1	\$80,000	
17	College Rd	R1	Remove trees/stumps, recompact stopbank (College Rd)	L/B 9.8	\$80,000	
18	Main St, Nic's Auto	R2	Remove 5 stumps & repair/recompact site	L/B 11.4	\$35,000	
19	Hot Spot, Eruera	R2	Stage 1, Remove 150 mts of shelter belt	L/B15.3	\$35,000	
20		Subtotal			\$230,000	
21						
28			Fly tipping and rubbish collection/disposal		\$8,250	
29		R1 to 10	All Reaches	Various	\$8,000	
30	Waikokopu Stream	R4	Remove vehicles from stream	1.8	\$1,500	
31		Subtotal			\$9,500	
32						
33			Animal pest control work		\$8,250	
34		R1,2,8,10	Stopbanks	Various	\$15,000	
35		Subtotal			\$15,000	
36		SUBTOTAL - GENERAL		\$16,500	\$472,900	
37						
38	Lower Rangitāiki River					
39	Mouth to Matahina		Riverbank weed spraying (where required)		\$9,600	
40	Rangitāiki River	R1,2,3	Pampas, blackberry, gorse, woolly nightshade	L & R/Bs	\$24,000	
44						
45	Rangitāiki River	R1,2,3	Tree clearing/mulching/layering		\$45,600	
46			Multiple sites		\$43,000	
49						
50	Lower Rangitāiki		Native planting & maintenance & habitat works		\$23,600	
51		R1,2,3	3 separate sites	Various	\$35,000	
58						
59			Rock replenishment		\$290,600	
60	Rangitāiki River	R1	College Rd @ Floodwall site (in conj. With wall replacement)	L/B 9.45-9.85	\$120,000	
61	Reid's Central Canal	R10	Reid's Central, stage 2, lower reaches	R/B 0.7 to 1.3	\$175,000	
63						
64	Rangitāiki River		Fencing		\$26,200	
65		R1,2,3	Various sites as required	L & R/B	\$20,000	
67						
68			Minor floodgated culverts & stopbanks		\$8,300	
69	Rangitāiki River	R1 & 2	Inspections and maintenance		\$10,500	
76			SUBTOTAL - LOWER Rangitāiki		\$403,900	\$427,500
77						
78	Upper Rangitāiki River					
79			Channel/riverbank weed spraying		\$28,800	
80	Rangitāiki, Whirinaki,	R5,6,7	Gorse, pampas, blackberry	Various	\$29,000	
81	Horomanga, Ohutu,					
82	Mangimate & Jones wash					
87						

Rangitāiki-Tarawera Rivers Scheme - 2022-2023 Maintenance Programme Summary

Date: 25/08/2022

Objective ID: A4132529

	Reach	Work Type	Location	Annual Budget	Job Estimate	Status
88		Tree clearing/mulching/layering/burning		\$107,100		
89	Rangitāiki/ Horomanga	R4,5,7	Willow maint. & pest plant removal		\$110,000	
90	Whirinaki River					
91	Waikokopu Stream					
92						
93						
94		Channel maintenance, realignment		\$366,400		
95	Whirinaki River	R7	Various sites (Late summer)	L & R/Bs	\$70,000	
96	Rangitāiki River	R5	Beach shaping (multiple sites)	LB 89.6	\$94,000	
99	Waikokopu Stream	R4	Beach Shaping	L&R/Bs	\$20,000	
100	Mangamate Stream	R6	Various sites	L & R/Bs	\$10,000	
101		Subtotal			\$194,000	
102						
103		Willow and native planting, maintenance & habitat works		\$56,200		
104	Rangitāiki River	R4,5,6,7	4 separate sites		\$44,000	
105		Subtotal			\$44,000	
106						
107		Rock/rubble/trenched willows		\$38,200		
108		R4,5,6,7	Rock replenishment at multiple sites		\$40,000	
109						
110		Fencing		\$800		
111						
112		SUBTOTAL - UPPER Rangitāiki		\$597,500	\$417,000	
113						
114	Tarawera River					
115		Riverbank weed spraying		\$7,700		
116		R8	Pampas, blackberry, gorse, woolly nightshade & glyceria	L & R/Bs	\$9,000	
119						
120	Tarawera River		Tree mulching/clearing/layering	\$22,700		
121		R8	Poplar removal/willow maintenance at multiple sites	L & R/Bs	\$75,000	
125						
126	Tarawera River		Native planting & maintenance & habitat works	\$11,700		
127	Tarawera/Waikamihi/ORC	R8	Releasing of plants at multiple sites	L & R/Bs	\$10,000	
128						
132						
133		Rock replenishment		\$53,100		
134		R8	Replenish 50 lineal metres (Mexted's)	L/B 3.4	\$20,000	
136						
137		Fencing		\$1,300		
138		R8 & 9	Various sites as required	L & R/B	\$1,500	
139						
140		Minor floodgates/culvert inspections		\$3,300		
141		Subtotal			\$1,500	
142		SUBTOTAL - TARAWERA		\$99,800	\$115,500	
143						
144	Reach 10 Canals, Awaiti,					
145		Pump Inspections		\$1,100	\$1,000	
146	Old Rangitāiki Channel		Pump six month inspection	\$700	\$1,000	
147	Pump Station		Periodic maintenance	\$8,200	\$4,000	
150			Electricity	\$2,130	\$4,000	
151			Switch Board Upgrade (quotations underway)		\$85,000	
152					\$95,000	
153						
154		Old Rangitāiki Channel & Awaiti Floodgates		R/B 0.0		
155			Inspections	\$4,300	\$3,000	
156			Misc maintenance & desilting	\$7,300		
158						

Rangitāiki-Tarawera Rivers Scheme - 2022-2023 Maintenance Programme Summary

Date: 25/08/2022

Objective ID: A4132529

	Reach	Work Type	Location	Annual Budget	Job Estimate	Status
159	R8,10	Minor Floodgate Structures & Stopbank Maintenance:		\$29,100		
160		Inspections and minor maintenance			\$4,000	
161		Kope West F/gates x 2, Built 2nd in house [FFGs]			\$6,000	
162		Stopbank miscellaneous maintenance			\$12,400	
163		Subtotal			\$22,400	
164						
165		Canal bank weed spraying		\$2,000		
166	Kope West, Reid's Central, Omeheu & Awaiti Canals	R10 Pampas, blackberry, gorse	Various		\$7,000	
167						
168						
170						
171		SUBTOTAL - REACH 10 CANALS, AWAITI, ETC.		\$54,830	\$127,400	
172						
173	Total Annual Maintenance Budget			\$2,345,060	\$1,111,900	
174	Annual Flood Damage Repairs			\$213,000	\$218,400	
175	Total Asset Defect Repairs			-	\$230,000	
176	Overall Maintenance			\$2,558,060		
177	Total Scheduled Annual Maintenance Estimate				\$1,560,300	

MEMORANDUM



To: Rangitāiki-Tarawera Rivers Scheme
Advisory Group

From: Kirsty Brown
Rivers and Drainage Assets Manager

Date: 22 August 2022

File Ref: A4185324

Subject: Rangitāiki River Forum Update

To facilitate better communication flow between the advisory group and the Rangitāiki River Forum (RRF), following are topics of interest from the RRF meeting held 3 June 2022:

1. Verbal updates on the following items:

- Update on the Bill Kerrison Memorial Sculpture at Aniwhenua Reserve.
- Manawa Energy Update on Matahina Dam Downstream Trap and Transfer Programme

2. Membership Change

Confirmation of Shaneen Simpson-Almond appointment to represent the Ngāti Tūwharetoa (Bay of Plenty) Settlement Trust on the forum, replacing Clifford Te Riini and Paora Hunia.

3. Rangitāiki Catchment Programme Dashboard Report - March to May 2022

Update on projects within the Rangitāiki Catchment Programme. See Attachment 1 for dashboard update.

4. Essential Freshwater Policy Programme 2022 Update

- Exploring water quality and ecology state and trends using the new online WET (Water Ecology Tool).
- Participating in online public engagement on long-term visions and outcomes for freshwater.
- Summary information and draft policy option are developing. Toi Moana staff intend to invite iwi to provide feedback this year, prior to public engagement in 2023.

5. Update from the Rangitāiki-Tarawera Rivers Scheme Advisory Group

High-level overview of key topics from the advisory group's recent meeting held 6 May 2022.

To view the full Rangitāiki River Forum's 3 June 2022 meeting agenda, presentations and minutes, visit: <https://www.boprc.govt.nz/your-council/council-and-region/committees/rangitaiki-river-forum>



Kirsty Brown
Rivers and Drainage Assets Manager

Rangitāiki Catchment Programme Dashboard – March-May 2022



Programme Manager		Charles Harley	As of Forum Meeting	3 June 2022	Green	Te Ara Whanui o Rangitāiki Actions		Programme highlights		
Programme Sponsor		Chris Ingle	Previous RAG status	March-May 2022	Green	Actions under Objective 7		Rangitāiki Floodwall - upgrade design at College Road completed, upgrade at East Bank Road completed ahead of schedule.		
Category	Previous RAG Status	RAG Status Current	Comment on any RAG where status is not Green			Actions under Objective 7		River Scheme maintenance work programme - working with local community eg Waka Ama club for improved access to the river; collaborating with the Rangitāiki Hapū coalition for native plant restoration/maintenance on the riverbank through Te Teko and downstream of Te Mapou Marae		
Overall	Green	Green				Actions under Objective 5		Smith Road crossing over the old Rangitāiki River channel needs replacing, BOPRC and WDC are working together to find a solution to provide improved ecological outcomes. A small collapsed culvert that lets water into a ponded area parallel to the old Rangitāiki River (near Matatā) will be replaced in May, the adjacent area planted to provide improved habitat for inanga and other instream species – a presentation on this work will be given at this Hui.		
Schedule	Green	Green	Amber – scope/schedule slippage on the Murupara Wastewater Treatment Plant project; schedule slippage on 4 Rivers & Drainage projects and the TDC Biodiversity Strategy.			3.1, 4.1, 4.2		'Participate' the online engagement on values, vision, and outcomes for the Rangitāiki FMU is open during 29 April-29 June 2022. The online Water Ecology Tool (WET) is now available for viewing a range of freshwater datasets.		
Scope	Green	Green				2.3		To date wildling conifer control work has occurred over 644 ha in the upper Rangitāiki area with the programme on track to deliver \$630,000 of work by end of June.		
Resources		Green	Green				Te Ara Whanui o Rangitāiki Actions		Programme Updates	
Budget		Green	Green				2.3		Upper Rangitāiki Wilding Conifer Programme work continued in this quarter at Lochinver Station and on DOC lands (Otamatea, Rangitāiki Conservation Area).	
No.	Annual Work Plan Projects 2021/2022					2,3,4		Upper Rangitāiki Focus Catchment – works for 2 out of the 3 signed EP's have been completed; approximately 7 kms of fencing to be reconciled before end of June 2022. Budget for 22/23 has been confirmed for work with the farmer catchment group to continue.		
Shared			Scope	Budget	Schedule	Actions under Objective 2, 7.4, 7.5		MfE Public Waterway Ecological Restoration Project – EP's in Minginui are completed, one EP completed and one still ongoing in Waiohau, the upper Rangitāiki still ongoing with one EP to be completed by the end of this financial year.		
1	Te Hekenga o Tuna Plan		Green	Green	Green	Actions under Objective 1 and 7.4		Remediation of small structures to provide fish passage – full allocation of funding (\$15,000) will be complete by June 2022, over 50 structures have been remediated, a full list will be tallied once completed.		
Bay of Plenty Regional Council			Scope	Budget	Schedule	5.5, 8.6		Lake Aniwaniwa – NIWA to be engaged to undertake a review on weed control methodology and costings over this winter, the results will be shared with Ngāti Manawa and the community. The drone monitoring was a trial to determine the feasibility of using this technology for monitoring purposes, a lack of resourcing will delay implementing this type of monitoring for 22/23.		
1	Biosecurity		Green	Green	Green	Actions under Objective 7		River Scheme maintenance work programme -Working closely with Ngāti Manawa on proposed works/vegetation restoration in Galatea/Whirinaki/ Horomanga, soft engineering erosion repair methods are being trailed to enhance naturalness in the river and create/enhance tuna habitat; repairs to high priority defect sites are progressing, concentrating on tree removal impacting the Edgecumbe urban area; Two significant rock replenishment works completed in the lower Rangitāiki River and Reid's Central canal.		
2	Coastal Catchments Land Management		Green	Green	Green	Actions under Objective 7		Lower Rangitāiki River left bank stopbank raising (Thornton Beach Road) – project delayed to 22/23, substantial change to the original scope/cost of project. Enabling work has continued with tendering process ready to commence/resource consent application in progress; construction scheduled to commence in November 2022.		
3	Engineering		Green	Green	Green	Actions under Objective 7		Floodwall remedial work – College Road upgrade design complete, construction scheduled for 22/23.		
4	Integrated Planning		Green	Green	Green	Actions under Objective 7		Rangitāiki Floodway Project: Stage 6c - nearing completion, good weather in April/May allowed contractors to significantly progress works; it is expected this project will meet the end of June 2022 deadline. Spillway Project – refinements from hydraulic modelling has led to additional design requirements to manage operational risk, physical worked delayed construction due to commence from October 2022. Stoplog Project – delayed, design with fabricators for final shop drawings, fabrication due to commence in Aug/Sept with delivery in January 2023.		
5	Rivers & Drainage		Green	Green	Green	Actions under Objective 7		Culvert replacements incorporating fish friendly floodgates have been completed on Awaiti Stream (flowing into Omeheu Canal) and the Orini wetland (flowing into Reid's Central Canal).		
6	Science		Green	Green	Green	Actions under Objective 7		Tidal flows are being enabled in the main tributary waterways by holding floodgates open as much as possible, staff have observed good numbers of native fish accessing these tributaries as a result.		
Whakatāne District Council			Scope	Budget	Schedule	3.1, 4.1, 4.2		BOPRC NPS-FW Update – Targeted iwi engagement is ongoing since August 2021; The region wide provisions and framework is being progressed.		
1	Lake Aniwaniwa (Aniwhenua) – Renewals budget (plus staff time)		Green	Green	Green	3.3		SOE Monitoring - Thirteen invertebrate monitoring sites were sampled as part of ongoing monitoring. Electric fishing undertaken in 11 streams, fyke nets deployed in 20 sites in both Lake Matahina and Aniwaniwa; further works planned but not completed due to a combination of poor weather and access issues. All data needs to be entered into database prior to analysis.		
2	Edgecumbe Reserves – Renewals budget (plus staff time)		Green	Green	Green	3.2		Murupara Wastewater Network Inflow and Infiltration - Strategy is yet to be developed; assessment of CCTV work completed, and a number of reticulation sewer pipes have been relined.		
3	Thornton Domain - Renewals budget plus staff time		Green	Green	Green	3.2		Murupara Water Safety Plan Initiatives – installation of pressure transducers and flow meter data loggers completed; data is being analysed before parameters are set for monitoring/early warning system; tender for renewal of galvanised iron water pipelines awarded in March.		

4	Murupara Wastewater Treatment Plan receiving environmental monitoring - \$25,000 (plus staff time)	Amber	Green	Amber	3.2, 5.6, 7.5	Murupara Wastewater Treatment Plant – scope for engagement of future wastewater discharge consent on hold until working group established; receiving environment monitoring continues; desludging of Murupara wastewater ponds recommenced in May 2022.
5	Murupara Water Safety Plan Initiatives - \$300,000 (plus staff time)	Green	Green	Green	2.1-2.4,6.2,6.3,7,8.4	Taupō District Plan Review - Five draft chapters of the have been released for consultation, these include Strategic Directions, Rural, Residential Coverage, Industrial and Town Centre heights, consultation closes 13 June; Biodiversity Strategy update – awaiting the NPS Indigenous Biodiversity to be released by central government.
6	Murupara Wastewater Network Inflow and Infiltration Strategy - \$100,000 (plus staff time)	Green	Green	Green	Actions under Objective 1, 2.5,7.4	Dam Site inspections – 5 April Lake Aniwhenua - no issues observed while on site; 3 May Matahina - no major issues found, work is progressing on the construction of the elver elevator and improvements to the current fish passage and transfer for the upcoming season; 3 May Wheo – no issues observed while on site.
7	Three Waters Strategy – staff resources only	Green	Green	Green	Te Ara Whanui o Rangitāiki Actions	Programme Upcoming Activities
Taupō District Council		Scope	Budget	Schedule	3	Hoping to present the findings of the Rangitāiki Catchment Fish Surveys data entry and analysis at the 2 September RRF Hui.
1	District Plan Review	Green	Green	Green	Actions under Objective 7	Rangitāiki Floodway Stage 6C expected to be completed by June 2022.
2	Maintenance of the northern part of Taharua Road, Matea Road, Matea Bridge and Rangitāiki School Road	Green	Green	Green	Actions under Objective 7	April 2017 Flood Repair Project – repairs on the two main sites have experienced Covid related delays in consultation with landowners and Iwi, further investigation of soft engineering repair techniques in preference to using rock; a carry forward of \$250,000 being requested to fund these works in 22/23.
3	Biodiversity Strategy	Green	Green	Amber	3.2	Murupara Water Safety Plan Initiatives – data analysis for development of monitoring/early warning programme; renewal of galvanised pipes to be completed by 30 June. Murupara Wastewater Network – detailed programme of works to be developed by end June 2022 based on CCTV assessment.
					2.3	The Thornton Kanuka site that sits between the Rangitāiki and Tarawera river mouths has had several occurrences of illegal removal of Kanuka for firewood, an action plan is being developed with WDC and will go out to iwi for discussion.
					2.1-2.3, 2.6, 5.5, 7.5	Freshwater Improvement Fund – Wetland Restoration Project – MfE, BOPRC Councillors and key staff and Ngāti Manawa representatives are invited to the Rangitāiki Wetlands field day on the 1 June 2022.

MEMORANDUM



To: Rangitāiki-Tarawera Rivers Scheme
Advisory Group

From: Kirsty Brown
Rivers and Drainage Assets Manager

Date: 18 August 2022

File Ref:

Subject: Asset Management Planning

The purpose of this report is to highlight to members the changing river management environment and how we might incorporate evolving principles and best practice into our asset management planning and service levels.

One of the central themes for our next Long Term Plan and Asset Management Plan reviews will be supporting our communities to be more sustainable and resilient now and into the future, not just environmentally but also socially, culturally, and economically. This will require a shift in our thinking, in particular for ongoing and future flood and erosion works on both rural and urban land, focusing on enabling river catchments to behave more naturally with less frequent interventions.

This will change the way river works are managed with a focus on adaptability, maximising natural river processes while continuing to meet flood protection levels of service. Future solutions may involve providing more room for the river and using natural and nature-based flood risk management solutions.

This development in approach will be signalled within the review of the Rivers and Drainage Asset Management Plan. Clear levels of service and guidelines on triggers and scales of intervention for each scheme will be needed to support the change. Engagement with river scheme advisory groups on the implications of what is proposed will be valuable as the review progresses (scheduled for adoption with the Long Term Plan in June 2024).

We are also entering a time of change with central government reforms and policy changes signifying a new way of delivering services within local government e.g., Te Mana o Te Wai which puts the well-being and health of our rivers at the centre of how we manage our freshwater and specifically mandates requirements for working with our iwi partners.



Kirsty Brown
Rivers and Drainage Assets Manager

MEMORANDUM



To: Rangitāiki-Tarawera River Scheme
Advisory Group

From: Mark Townsend
Engineering Manager

Date: 26 August 2022

File Ref: A4187943

Subject: Gravel extraction in the Rangitāiki-Tarawera Rivers Scheme

Gravel management in the Rangitāiki-Tarawera Rivers Scheme currently occurs in the Rangitāiki River upstream of Matahina Dam. No extraction is carried out in the reaches below Matahina, or in the Tarawera River.

1.0 Horomanga River – Gravel Extraction 2017-2022

Year	Quantity Allocated m ³	Quantity Extracted m ³
2017	19,000	12,834
2018	30,000	20,400
2019	76,000	56,353
2020	81,000	50,010
2021	40,000	32,655
2022	0	0



Photo 1 – Horomanga River

Extraction is encouraged in sections of the Horomanga River. Based on recorded gravel extractions, and surveys, the calculated inflow of gravel since 2001 has averaged only 3,700 m³ per year. However, the riverbed is still severely perched over the four-kilometre reach above Galatea Road.

It is expected that to achieve a desirable mean bed level, of around one metre below surrounding farmland, significant extraction is required (about 270,000 m³) in the 5.3 km aggradational reach in the lower river. Extraction is supported to reach and maintain desirable bed levels (that limit both erosion and flooding) to maintain a stable river profile. The last bed survey was conducted in 2019 and the next one is scheduled for later this year (2022). While good progress has been made with extractions addressing the aggradation problem, visual inspections confirm the riverbed is still reasonably perched. A full reassessment will be made once the 2022 survey data is available.

Late last year Regional Council, Ngāti Manawa and Timberlands staff met on site to talk about continued extraction on the Horomanga. Ngāti Manawa were particularly interested in how extraction work might support the enhancement and development of tuna habitat. Agreement for extraction was not reached, and Timberlands are now sourcing gravel material for forestry roading from the Kopuriki Stream.

Whakatāne District Council (WDC) have plans to extract gravel from underneath the Galatea Road Bridge #73. The details of the planned extraction are yet to be finalised by WDC. It is important that approving the extraction will not result in damage to the bridge. Once this is available a combined approach will be made to Ngāti Manawa to seek support for the works.

2.0 Kopuriki Stream – Gravel Extraction 2019-2022

Year	Quantity Allocated m ³	Quantity Extracted m ³
2019	0	0
2020	22,000	5,444
2021	20,000	9,856
2022	20,000	7,928

In 2020 gravel extractions were approved for the Kopuriki Stream. Prior to 2020 there had been no gravel extracted since 2014. The Environmental Engineer notes that the Kopuriki streambed is extremely perched in places and should be dropped at least a metre in depth.

While no estimates of long-term supply have been made, significant resources now exist within the stream floodway. Any extraction should be focused on the lower reaches of the stream (i.e. cross-sections 1 to 4) and cross-sections 6 and 7, where bed levels are aggrading and large volumes have been gained over recent years.

Benefits to the river system of the extraction include:

- Reducing the potential for flooding from a severely aggraded stream.
- Reducing the potential for the stream to avulse (jump out of its bed and change course).
- Improving the flood carrying capacity of the Galatea Road Bridge.

The extraction contractor has been granted land use consent from Whakatāne District Council to process gravel material on land adjacent to the stream. Gravel extraction in this location has the support of the Ngāti Haka Patuheuheu (hapū of Ngāi Tūhoe).

3.0 Jones Drywash, Mangamate and Ohutu Streams - Gravel Extraction

There is currently no extraction in the Mangamate and Ohutu streams and staff are comfortable with this. These two streams appear to be steep enough to transport significant quantities of gravel right through the system to the Horomanga River. Gravel continues to move down to the Jones Drywash area due to large upstream slips in heavy rain events. This dynamic situation needs to be closely monitored to avoid significant gravel build-up that may cause flooding or infrastructure damage.

Mark Townsend
Engineering Manager

MEMORANDUM



To: Rangitāiki-Tarawera Rivers Scheme
Advisory Group

From: Kirsty Brown
Rivers and Drainage Assets Manager

Date: 22 August 2022

File Ref: A4185473

Subject: **General Business Report**

1. River Scheme Advisory Groups Terms of Reference Review

As advised at our last group meeting, a review of the 2016 Terms of Reference (TOR) for our four river schemes advisory groups has been underway. The main purpose of this review is to confirm that the purpose of the advisory groups remains appropriate and to consider how the group might assist in achieving our Long Term Plan strategic impact areas: Partnerships with Māori, Climate Change and Community Participation. The review has also supported addressing concerns raised in the 2021 online survey, e.g. barriers to meeting attendance.

A copy of the draft TOR (attached) was circulated via email on 19 July 2022 with the option of providing feedback prior to the September round of group meetings. The main enhancements include:

- A clause that provides an opportunity for members to be reimbursed for time or mileage if they are required to travel or take time off work to attend meetings.
- The inclusion of the following four guiding principles to support the work of the advisory groups:

- **Adapting to our changing climate**

The Bay of Plenty's climate is changing, and these changes will continue for the foreseeable future. Adaptation is essential to ensure our River Schemes remain sustainable and resilient in the long term. The work of the Advisory Groups helps to manage the effects of changing climate.

- **Working effectively with Māori to deliver outcomes for the region**

Implementing the principles of the Te Tiriti o Waitangi (The Treaty of Waitangi) collaboration and partnership will guide the work of the Advisory Groups. The Council has an opportunity to work effectively with Māori by establishing appropriate Māori participation through Advisory Groups. Hearing Māori perspectives and the inclusion of cultural values (such as Mātauranga Māori) will ensure river management and flood protection solutions remain consistent with community expectations. Diversity within

the River Advisory Groups is encouraged and supported as it reflects the diversity in our wider community.

- o **Community participation**

Members will assist with the sharing of scheme information to ratepayers and residents and promote opportunities for participation and collaboration.

- o **Sympathy with natural processes**

Evolving best practice in river engineering and management in New Zealand is being shaped by the “Making Room for the River” philosophy. This approach tends to a more natural and less engineered/confined river system, to improve overall river and ecological health.

2. Condition and Performance Assessments

Our Rivers and Drainage Asset Management Plan sets out a programme of condition and performance assessments for our flood protection and drainage infrastructure assets. The next round of assessments are due to commence this financial year.

Asset condition is a measure of the physical state of an asset which is visually assessed by staff/contractors and graded from 1 (very good) to 5 (very poor). The below table summarises the condition rating results for 2020/21 for Council’s Rangitāiki and Tarawera stopbank network. For stopbanks, the ‘count’ is each 100 metre inspection point and for culverts/floodgates the ‘count’ is the actual asset. Data collected during the field assessment provides information for maintenance programmes and renewal proprieties.

Year	2020/21
Asset Condition Rating Scores	%
1 - very good	25.8
2 - good	53.3
3 - moderate	16.1
4 - poor	4.1
5 - very poor	0.6
Total	100.0

While condition assessment looks at the physical state of an asset, performance assessment is a ‘whole picture’ analysis by assessing required service levels, asset condition, intrinsic strength, capacity, geology, and the potential risks to communities.

These assessments use the performance assessment framework and tool developed for the NZ River Managers Special Interest Group and produces a risk profile for each river’s assets segmented, from 1 (very low) to 5 (very high).

3. April 2017 Flood Repair Insurance

The insurance claim for the April 2017 flood event has now been settled. Regional Council Rivers and Drainage infrastructure assets are insured under the BOPLASS shared services arrangement. At the time of the April 2017 flood event the total loss limit Council was covered for was \$50,000,000. Council's insurance cover (40%) is held with several underwriters in the London insurance market.

The Flood Recovery Team has worked with the assigned Aon insurance specialists to support a final settlement offer for work undertaken to repair insured infrastructure assets and other costs incurred because of the event. Final settlement has been agreed as follows:

Item	Original Claim	Agreed Claim
River Scheme Assets	\$17,017,351	\$17,017,351
Response Costs	\$615,277	\$611,207
College Rd (houses, land & demolition)	\$2,615,474	0
Desilting Costs	\$123,015	\$53,500
P and G costs	\$660,659	\$600,000
Total Claim	\$21,031,777	\$18,282,058
Deductible	\$1,500,000	\$1,500,000
Progress Payments	\$9,000,000	\$9,000,000
Net Final Claim		\$7,782,058
Total owing at 40%		\$3,112,823

Note: the Material Damage Insurance Claim was settled in June 2021 (for \$1,501,719 GST inclusive).

4. Local Elections 2022

Local Government elections are being held this year for the Regional Council's 14 councillor roles. Postal voting opens on 16 September and closes Saturday, 8 October 2022. For more information on the local elections, please visit: <https://www.boprc.govt.nz/your-council/council-and-region/representation-and-elections>.

For your information, Councillor Clark is not seeking re-election. Bill has been a key member of the advisory groups for several years, and we would like to thank him for his invaluable service to us and our communities over the years.



Kirsty Brown
Rivers and Drainage Assets Manager

Rivers Scheme Advisory Group Terms of Reference 2022

For Kaituna Catchment Control Scheme, Waioeka-Otara Rivers Scheme, Whakatāne-Tauranga (formerly Waimana) Rivers Scheme, and Rangitāiki-Tarawera Rivers Scheme.

1.0 Purpose of the River Scheme Advisory Groups

- To connect regularly with those communities that benefit from and contribute to the work the Regional Council delivers to maintain and improve our river schemes.
- To enable discussion on the Regional Council's rivers and drainage work programmes and levels of service; and
- To discuss how we might adjust current practices, where necessary, to support sustainable river scheme management.

2.0 Guiding Principles

The following principles will guide the work of the Advisory Groups:

- **Adapting to our changing climate**

The Bay of Plenty's climate is changing, and these changes will continue for the foreseeable future. Adaptation is essential to ensure our River Schemes remain sustainable and resilient in the long term. The work of the Advisory Groups helps to manage the effects of changing climate.

- **Working effectively with Māori to deliver outcomes for the region**

Implementing the principles of the Te Tiriti o Waitangi (The Treaty of Waitangi) collaboration and partnership will guide the work of the Advisory Groups. The Council has an opportunity to work effectively with Māori by establishing appropriate Māori participation through Advisory Groups. Hearing Māori perspectives and the inclusion of cultural values (such as Mātauranga Māori) will ensure river management and flood protection solutions remain consistent with community expectations. Diversity within the River Advisory Groups is encouraged and supported as it reflects the diversity in our wider community.

- **Community Participation**

Members will assist with the sharing of scheme information to ratepayers and residents and promote opportunities for participation and collaboration.

- **Sympathy with Natural processes**

Evolving best practice in river engineering and management in New Zealand is being shaped by the “Making Room for the River” philosophy. This approach tends to a more natural and less engineered/confined river system, to improve overall river and ecological health.

3.0 Scope of activity

The role of the Advisory Group is as follows:

- To be a local contact on rivers and drainage issues.
- To share information to and from river scheme communities, stakeholders and tangata whenua.
- To act as a voice for the community to inform the planning and delivery of scheme works.
- Provide community views and input into key Rivers and Drainage management plans and strategies.
- Provide a feedback forum for Council on Rivers and Drainage proposals, projects and changes.
- To make recommendations on scheme management and operations including:
 - Capital and maintenance work
 - Proposed annual work programmes and budgets
 - Floodplain Management Strategies, and
 - Integrated and collaborative management opportunities.

4.0 Status

Local input and advice from Advisory Groups is essential for effective scheme management and is highly regarded by Council. While the Advisory Groups have no statutory basis or delegated functions of Council, they can make recommendations on Council matters.

5.0 Membership

The number and structure of members is intended to achieve a broad representation of the community covering the geographical extent of the Scheme, tangata whenua and various rating categories. The Council may appoint additional members to best meet the needs of the scheme. *(Each scheme-specific ToR will have its Membership Schedule inserted here from the Membership Schedule below).*

6.0 Appointment and term of service

Members will be appointed for a period of three years with a maximum term of six years. If an Advisory Group does not achieve its desired number of members, existing members who have exceeded their appointment period may continue for a further three-year term(s) by appointment.

Group membership consists of tangata whenua, territorial authorities, and targeted rate payers. Ratepayer representatives must be a targeted ratepayer in the Scheme to be eligible for nomination.

Ratepayer representatives are determined by the Council following a public consultation process.

Council may appoint members representing special interests within the Scheme.

An elected member of the Regional Council will be the Chairperson.

Members who are unable to complete their three-year term may be replaced by either Council or the authority they represented.

7.0 Meeting frequency and operation

There will generally be two meetings held per year in March and September called by the Chairperson or delegate.

Meeting agendas will be compiled by managers and staff who will also service the meeting.

Council will assist with personal expenses incurred in meeting attendance, in keeping with Council's Expenses and Allowances Policy. Claims in this regard are voluntary.

8.0 Conflict of interest

Members are required to bring to the attention of the Chairperson any conflict of interest or potential conflict they may have with any item on the agenda.

If a member is deemed to have a real or perceived conflict of interest in a matter that is being considered at a meeting, he/she will be excused from discussions and deliberations on the issue where a conflict of interest exists OR must not be present for consideration of that matter.

9.0 Confidentiality

During the business of the Advisory Group, a member will, from time to time, be privy to confidential information. Any confidential information is protected and should not be disclosed until a resolution of the Advisory Group to release the information has been made.

10.0 Communication and reporting

The line of communication between Council and the Advisory Group will generally be through the Regional Council General Manager and the Advisory Group Chairperson.

Issues or recommendations arising from Advisory Group meetings will either be addressed by Scheme Managers or referred to the Council.

Information updates to Members will be circulated by email.

Information updates to scheme ratepayers will be made available via media releases, information posted on the Council web site and/or by email.

Rangitāiki Drainage Scheme [insert only in Rangitāiki-Tarawera and Whakatāne-Tauranga TORs]

The Rangitāiki Drainage Scheme that is managed by BOPRC has a significantly smaller operational area and annual budget than the four major river schemes. For efficiency reasons the significant matters of interest relating to the Rangitāiki Drainage Scheme will be discussed and considered through the Whakatāne-Tauranga and Rangitāiki-Tarawera Rivers Scheme Advisory Group meetings. Matters specifically relating to the Rangitāiki Drainage Scheme will be discussed with “Rangitāiki Plains” representatives of the Whakatāne-Tauranga and Rangitāiki-Tarawera Rivers Scheme Advisory Groups.

11.0 Terms of Reference review

The Council may review this Terms of Reference at any time if it considers circumstances or its community collaboration processes have changed. Prior consultation with the Advisory Group members will occur if a review is being considered.