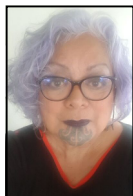


Bay of Plenty Regional Council
Mauāo Māori Constituency
Electing 1 Regional Councillor



Matemoana MCDONALD

Independent

My principal place of residence is in the Mauāo Māori Constituency area.

Ko te mea nui ko te hauora o te taiao. Tihei mauri ora!

Tēnā koutou katoa.

Ko Ngāti Ranginui, Ngāi Te Rangi, Ngāti Pūkenga, Ngāti Whakaue me Waitaha oku iwi. E tipu au i te rohe o Tauranga Moana. Ko Mauao te maunga, ko Tauranga te moana. Ko Matemoana McDonald toku ingoa.

I'm seeking re-election to continue mahi achieved in the previous two terms to the next level. And to raise the participation of Māori at the governance, management and operational levels of council.

Participation of Māori in local government is imminent and preparation for this is a priority focus for me in the new term. Equity and resourcing will be required to achieve this.

Collaboration with central government and local government is also key to support relationships with tangata whenua as the founding partner in Te Tiriti o Waitangi.

Ko tangata whenua te kaitiaki o te taiao!

Mauri ora,