

Ballance – Mt Maunganui

Environmental improvement

Established Air Quality Monitoring

- Ballance invested in 5-year lease on PM10 Dust and SO2 monitoring equipment
- SO2 Monitoring since Aug 2015
- PM10 Monitoring since Aug 2019
- AAQ units provides us with continuous real time data available online, (with alerts)
- Ability to identify high risk activities/areas and enact targeted improvement
- Inform/Educate Operators



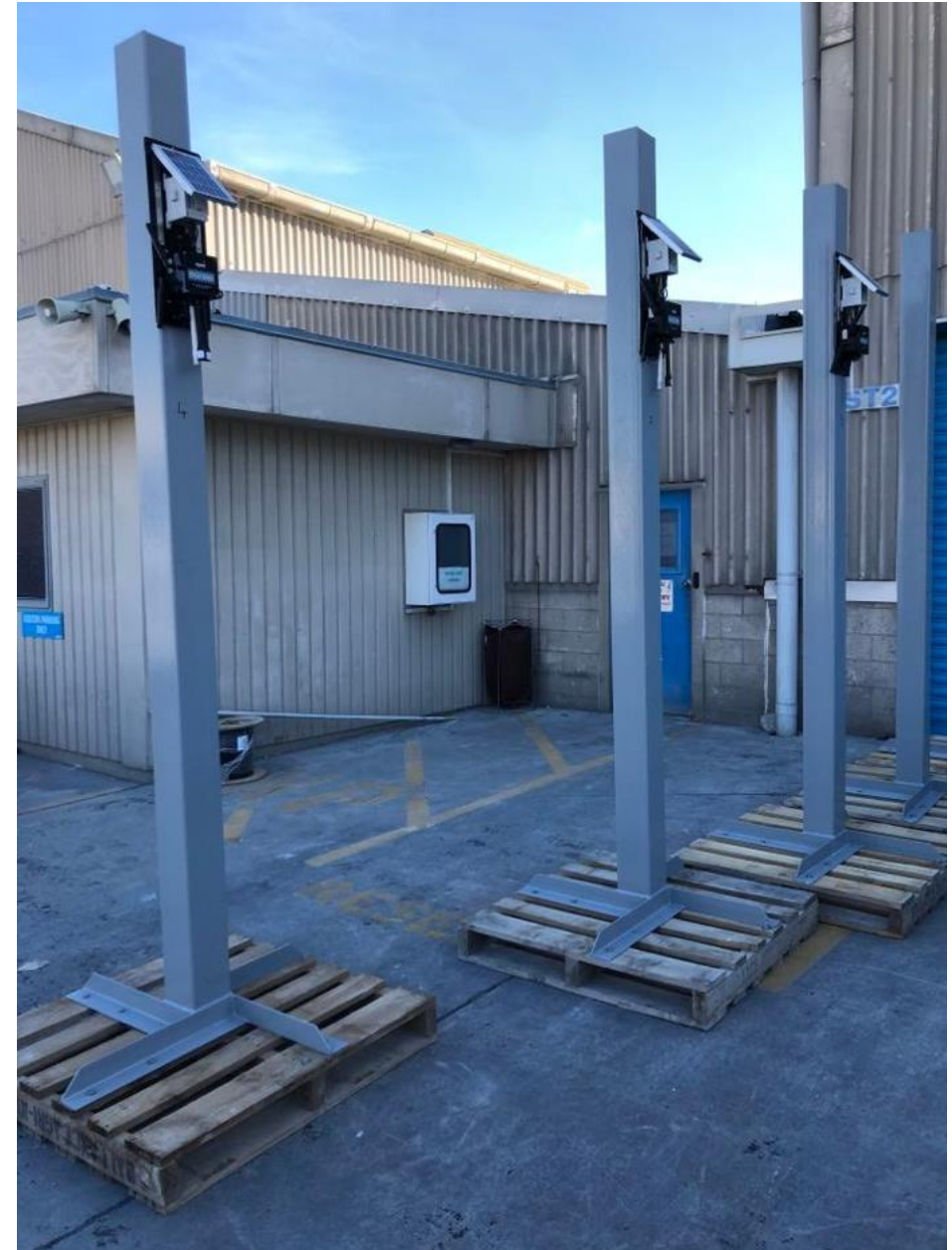
Dust Deposition Tubes	Yellow dot
PM10 AAQ Monitor	Blue dot
BOPRC AAQ monitor	Orange dot

Location	NE	NW	SE	SW	Marae
% Fert Dust of Total Dust	32.4	16.7	18.3	18.4	14.4

Expanded Air Quality Monitoring

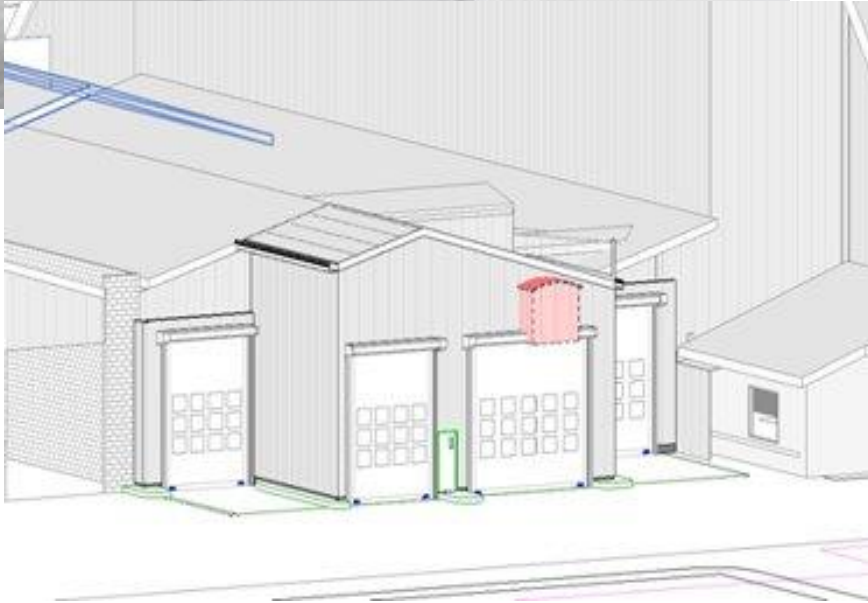
Additional Monitors:

- Adroit units distributed on site
- Range of parameters being monitored
- Greater number of monitoring locations
- Co-location of some units with existing pm10 BAM units



Asset improvements

Weighbridge enclosure



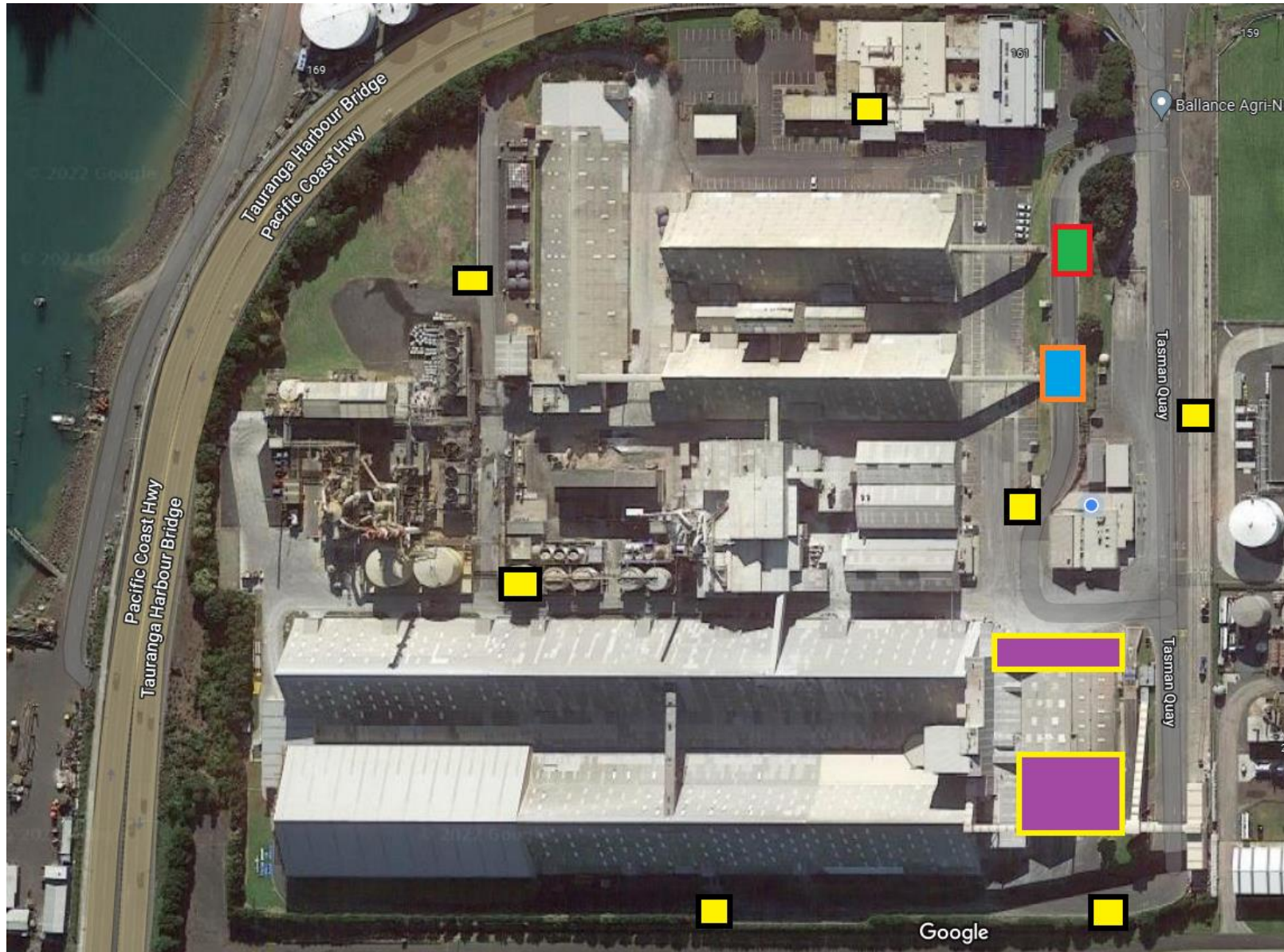
Asset improvements

Key solutions:

- Burnley baffles on intake grids to reduce dust during deliveries
- Temporary structures around intakes and conveyors to contain dust
- Tarps protecting roof cap vents in product store



Improvements layout



-  Adroit Monitors
-  Burnley Baffles
-  Intake Grid Enclosure
-  Weighbridge Doors

Planned further improvements

Dust reduction:

- Installation of baffles at all intake grids
- Temporary enclosures for deliveries
- Air extraction & filtering for weighbridge
- Further measures led by ongoing data gathering

• Water discharges:

- Turbidity monitor for stormwater
- Truckwash water reduction
- Opportunities for reuse

