

APPENDIX 2 FAULTS SOUTH OF EASTSIDE DEVELOPMENT SITE

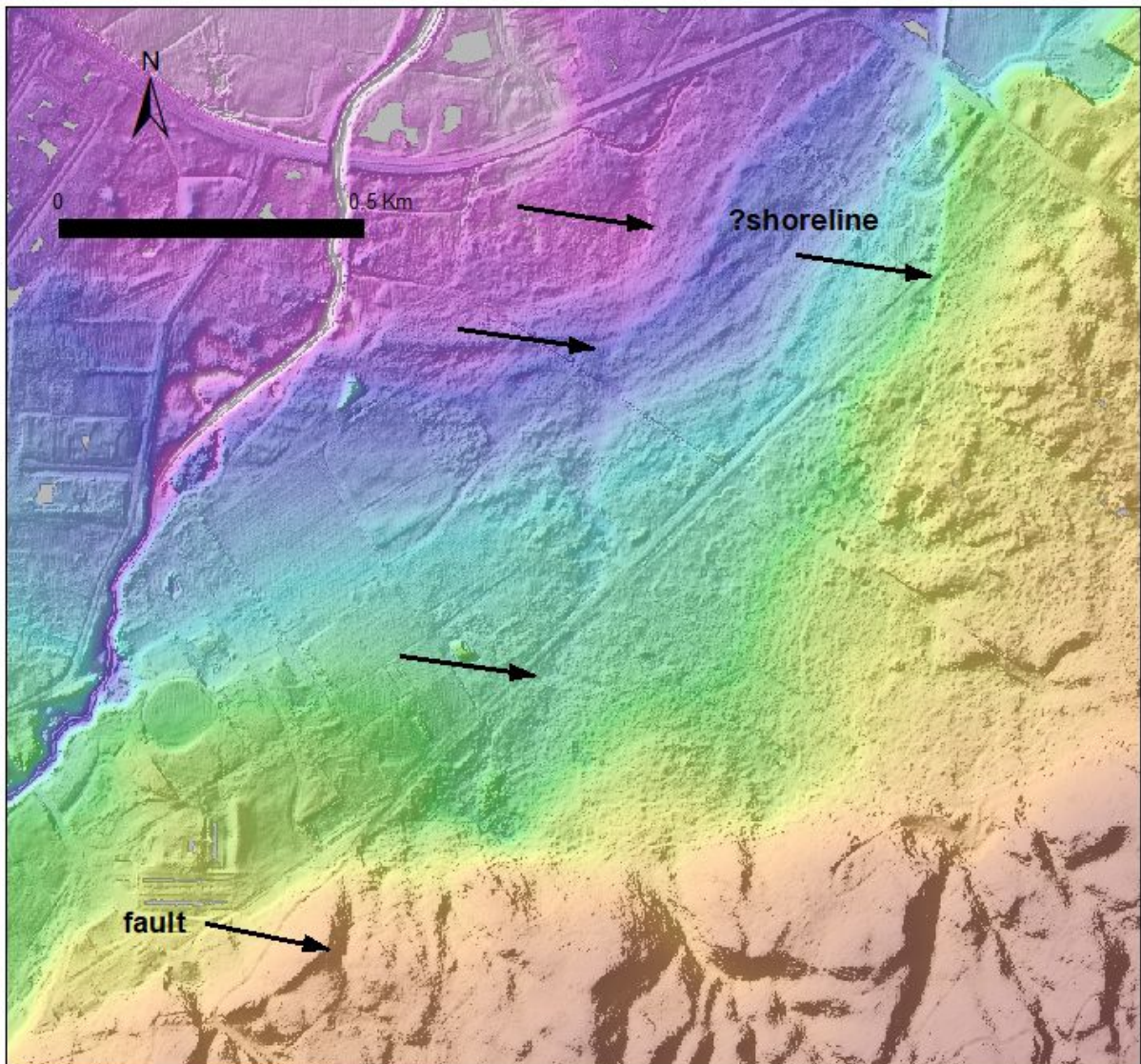


Figure A2.1 Lineations identified from LiDAR data (see Inset B in Figure 5.3) that trend northwards in the direction of the Eastside development site. The feature labelled "fault" is identified as a fault trace. The unlabelled arrows highlight a lineation that may possibly be a fault. The sharp lineation on the right may be a shoreline.