
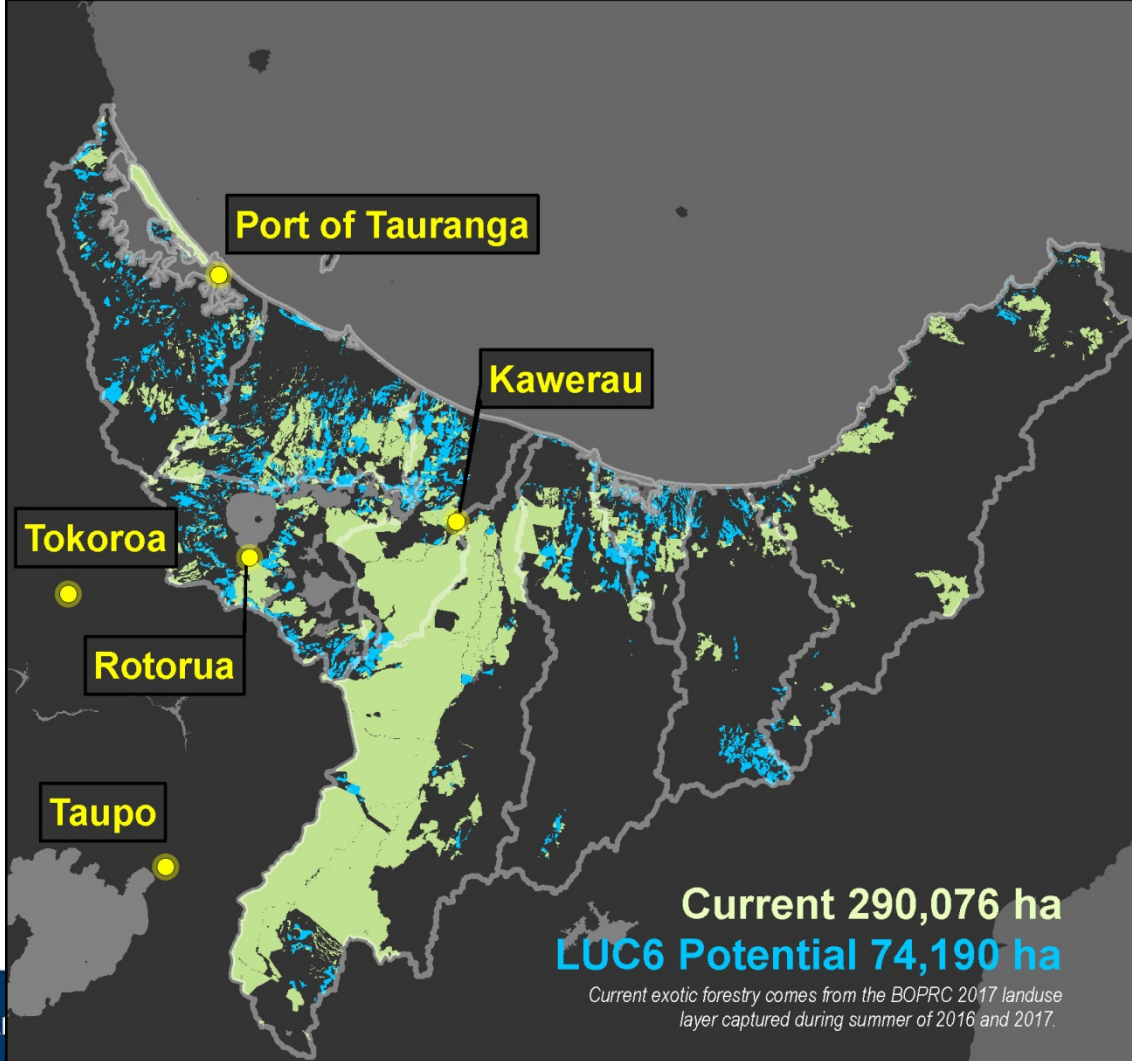


# Production Forestry Debris Mobilisation Risk for Bay of Plenty

Plus photos of East coast debris issues  
by S Stokes and A Miller

11 September 2018



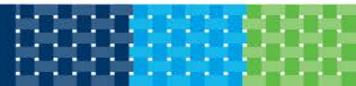


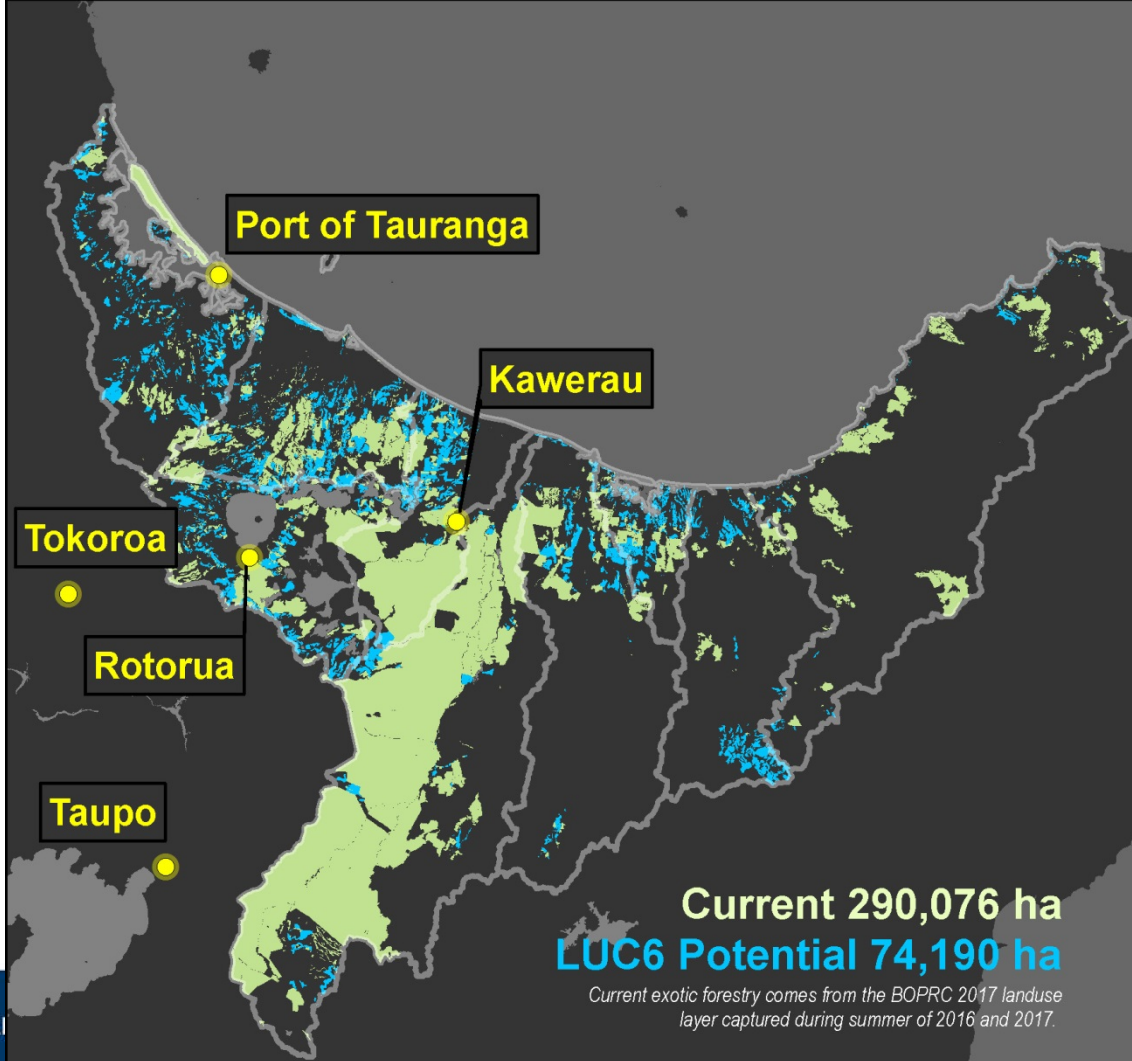
**Current 290,076 ha**  
**LUC6 Potential 74,190 ha**

*Current exotic forestry comes from the BOPRC 2017 landuse layer captured during summer of 2016 and 2017.*









**Current 290,076 ha**  
**LUC6 Potential 74,190 ha**

*Current exotic forestry comes from the BOPRC 2017 landuse layer captured during summer of 2016 and 2017.*



