



Kaituna-Pongakawa-Waitahanui WMA



Hui 3

1

Nau mai Haere mai



Tiaki pumautia te wai e hoki mai ai ngā rawa ki a tātou katoa
Treat the water wisely and it will return to us

2

BAY OF PLENTY REGIONAL COUNCIL Water Programme

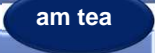

Housekeeping

- Fire protocol
- Toilets
- Meals
- Recording/Sharing notes
- Make yourself at home



3 BAY OF PLENTY REGIONAL COUNCIL Water Programme

Agenda

- Introduction
- Values Framework 
- Values mapping
- Towards measures 
- Freshwater Management Units
- Summing up
- What's next

4 BAY OF PLENTY REGIONAL COUNCIL Water Programme

This kaupapa is to help....

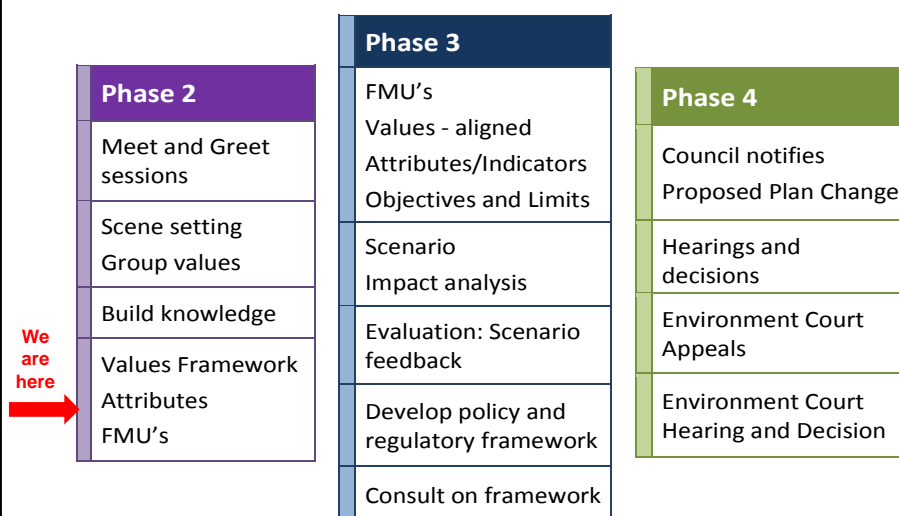
...Council implement the National Policy Statement for Freshwater Management:

- confirm values, express preferred objectives
- provide input to and feedback on limits and methods for freshwater quality and quantity within this WMA
- provide input to and feedback on solutions for managing activities to meet those limits
- advise Council in their decision-making for Plan change

5

BAY OF PLENTY REGIONAL COUNCIL Water Programme

Work Programme



6

BAY OF PLENTY REGIONAL COUNCIL Water Programme

Staff's current work

1. Values Framework
2. Freshwater management units
3. Current state gap filling
4. Begun to work on:
 - a. programme detail
 - b. attributes
 - c. key issue identification modelling requirements
 - d. groundwater models
 - e. overarching policy review
 - f. initiating methodology for environmental flows and levels

7

BAY OF PLENTY REGIONAL COUNCIL Water Programme

Updates **needs sorting**

National

1. Next steps for freshwater Consultation Document - Submissions just closed
2. Government's allocation policy package yet to come

8

BAY OF PLENTY REGIONAL COUNCIL Water Programme

Desired outcomes for today

That the group:

- *Feeds back on the regional values framework*
- *Advises on process for significant cultural sites*
- *Maps location/s of values*
- *Inputs on draft measures for values*
- *Considers draft Freshwater Management Units (FMUs)*

9

BAY OF PLENTY REGIONAL COUNCIL Water Programme

Regional Values Framework



10

Checking in...



We will outline the current Regional Values Framework:

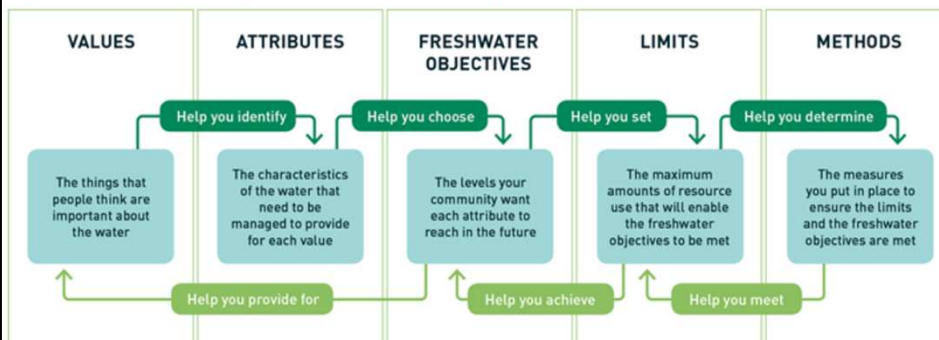
- national values and additional from you
- values not identified previously
- what is not included in the value set

then ask your advice about the:

- grouping of the values
- wording of the titles and descriptions
- process for recording significant cultural sites

Council's thinking

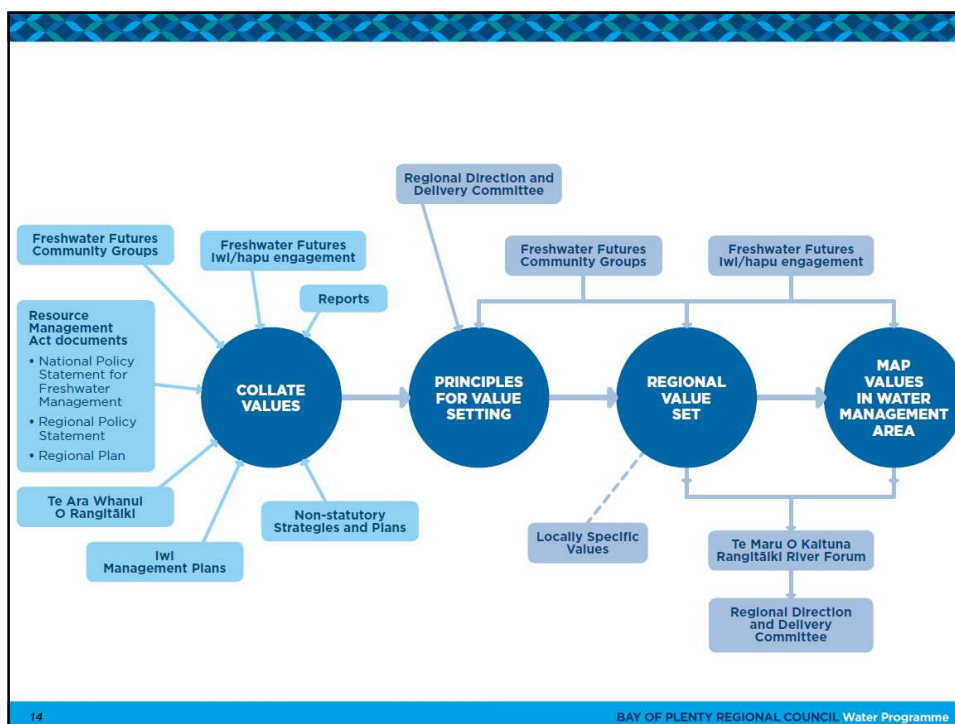
Figure 3: The relationship between freshwater objectives, limits and methods¹⁰



Principles for values setting

Council determined that in setting the values frameworks we need to:

- be nationally consistent
- provide for some regional consistency
- be flexible enough to accommodate local differences
- demonstrate how values drawn from statutory documents are represented
- check values from statutory documents with the authors
- generally, aggregate common regional values



Regional Values Framework	
<i>Ecological Values</i>	Te Hauora o te Wai / The Health and Mauri of the Water
<i>Social Values</i>	Te Hauora o te Tangata / The Health and Mauri of the People
	Te Hauora o te Taiao / The Health and Mauri of the Environment
	Mahinga kai / Food gathering, places of food
	Wai Māori / Municipal and domestic water supply
	He ara haere / Navigation
<i>Economic use and values</i>	Mahi mara / Cultivation
	Au putea /Economic or commercial development
	Hydroelectric power generation
	Floodwater and urban stormwater conveyance
<i>Cultural values</i>	Wai Tapu / sacred waters
	TBA / Sites of cultural significance
	Kaitiakitanga / Historical relationships
	Rawa tuturu / Customary resources
<i>Integrated Management</i>	Influence on other freshwater bodies
	Moana / Influence on sensitive coastal waters and receiving environments

Applying values in Kaituna-Pongakawa-Waitahanui WMA	
Values	
WMA/FMU	Ecosystem Health
	Species and habitat
	Human health for recreation – primary contact
	Human health for recreation – secondary contact
	Natural form and character
	Amenity values
	Mahinga kai – Kai are safe to harvest and eat
	Mahinga kai - kai te or ate mauri
	Fishing
	Water supply
	Transport and tauranga waka
	Irrigation and food production
	Animal drinking water
	Commercial and industrial take, use, damming and diversion
	Commercial and industrial assimilative capacity
	Hydro-electric power generation
	Flood protection and control
	Urban stormwater drainage and assimilation
	Wai Tapu
	Sites of Cultural significance
	Cultural heritage connections
	Kaitiakitanga
	Customary resources
	Influence on other freshwater bodies
	Influence on coastal waters and environments
	Influence on geothermal heat
K/M WMA	Y Y Y Y Y Y Y Y Y ? Y Y Y Y Y Y Y Y Y Y Y Y Y Y Y Y Y Y Y
FMU1	Y Y
FMU2	Y Y
FMU3	Y Y
16	Y Y

Applying values in the Kaituna-Pongakawa-Waitahanui WMA

Applicable value	Description
Values applying to FMU 1	Detail about specific aspects of a value
Example: Sites of Cultural Significance	Description about the site and location, sensitivity to water quality and quantity

17

BAY OF PLENTY REGIONAL COUNCIL Water Programme

Feedback

- Discuss with neighbour - values framework thoughts:
 - grouping of values, titles, scope
- On feedback sheet note:
 - agree/disagree
 - any comments?
- Check in - are people in general agreement?

18

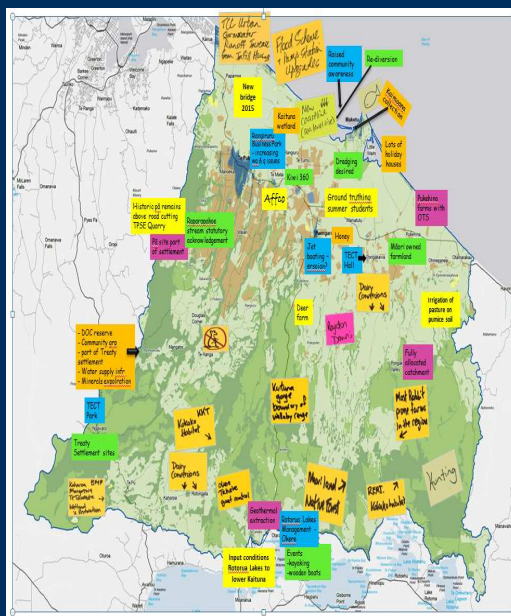
BAY OF PLENTY REGIONAL COUNCIL Water Programme

He kapu ti Morning tea



19

Values mapping



20

Values mapping

Values to be mapped:

1. Ecological – species habitat (see schedule and update)
2. Recreation/Primary contact (frequent immersion - swimming – see list of monitored swimming spots)
3. Natural character and form & Amenity values
4. Mahinga kai (other than fish)
5. Fishing (see schedule of habitat for trout)
6. Transport and Tauranga Waka
7. Rawa tuturu/Customary resources

21

BAY OF PLENTY REGIONAL COUNCIL Water Programme

Values mapping exercise

- Work your way around the maps (7), in any order you choose
- Check out:
 - the question
 - the values already gathered
- Mark any sites of the values that you are aware of using the stickers at each map
- Advise of time to circulate the room

22

BAY OF PLENTY REGIONAL COUNCIL Water Programme

Check in

- Any gaps?
- Any patterns or trends?
- Any further information you would have liked?
- Were any particularly hard or inappropriate?

23

BAY OF PLENTY REGIONAL COUNCIL Water Programme

Measuring Values



Attributes: measurable characteristics of fresh water, including physical, chemical and biological properties, which support particular values.

24

‘Measuring’ values

- National attributes (NPS)
- Additional attributes, e.g., MCI, sediment ...
- Descriptions for things that are difficult to measure
- How would you know a value is provided for?
- What water quality and quantity is needed?
- Feedback on suggestion sheet

25

BAY OF PLENTY REGIONAL COUNCIL Water Programme

Attributes	Values																										
	Ecosystem Health	Species and habitat	Human health for recreation – primary contact	Human health for recreation – secondary contact	Natural form and character	Amenity values	Mahinga kai – Kai are safe to harvest and eat	Mahinga kai - kei te orate mauri	Fishing	Water supply	Transport and tauranga waka	Irrigation and food production	Animal drinking water	Commercial and industrial take, use, damming and diversion	Commercial and industrial assimilative capacity	Hydro-electric power generation	Flood protection and control	Urban stormwater drainage and assimilation	Wai Tapu	Sites of Cultural significance	Cultural heritage connections	Kaitiakitanga	Customary resources	Influence on other freshwater bodies	Influence on coastal waters and environments	Influence on geothermal heat	
Periphyton (r)	Y		Y	Y	Y			Y																			
E.Coli (l/r)			Y	Y																							
NH ₄ -N toxicity (r)	Y		Y	Y																							
NO ₃ -N toxicity (r)	Y		Y	Y																							
Total N (l)	Y																										
Total P (l)																											

Lunch



27

Freshwater Management Units (FMU's)

FMU: a water body, multiple water bodies or any part of a water body determined by Council as the appropriate scale for setting objectives and limits and for freshwater accounting and management purposes”.

28

Principles for identifying FMU's

- Include the water body and its catchment
- Reflect significant spatial differences that affect how we should manage freshwater
 - biophysical (e.g., geology, slope) affects “natural water quality and quantity, and “capacity” for use
 - values/uses and objectives
 - land use (in some cases)
 - “permanent” modifications also being considered
- Regional consistency, with some local flexibility
 - justified, transparent method

29

BAY OF PLENTY REGIONAL COUNCIL Water Programme

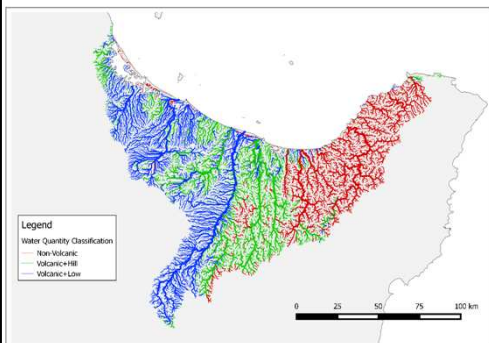
Principles continued

- Manageable spatial scale and number of FMU's
 - aggregate where possible
 - specificity vs planning/implementation complexity
 - clarity and certainty of boundaries
- Different FMU frameworks for surface water, groundwater, wetlands and lakes
- Flexibility during plan development

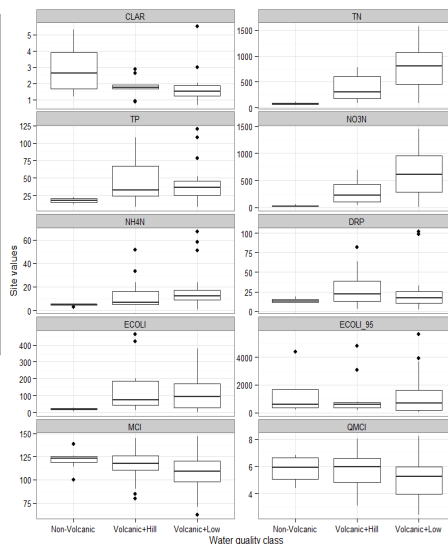
30

BAY OF PLENTY REGIONAL COUNCIL Water Programme

Biophysical layer



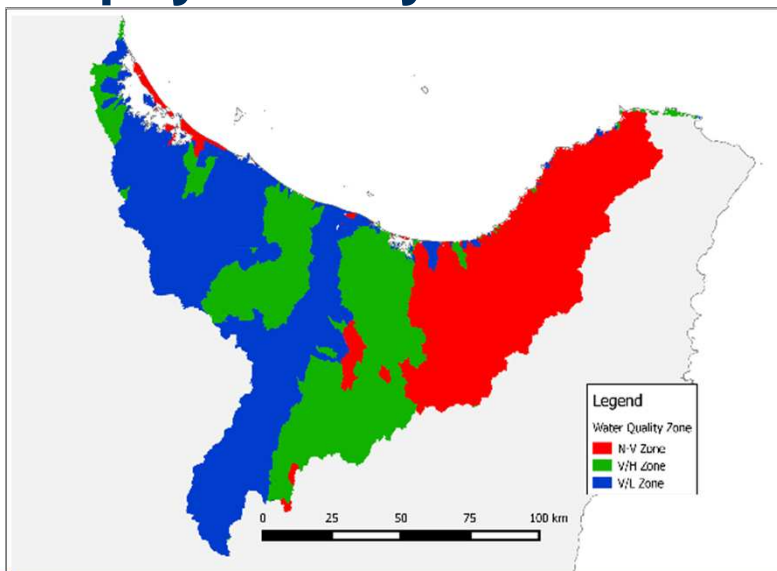
Non-Volcanic (all slopes)
Volcanic Hill (Slope > 10 degrees)
Volcanic Low (Slope < 10 degrees)



31

BAY OF PLENTY REGIONAL COUNCIL Water Programme

Biophysical layer continued



32

BAY OF PLENTY REGIONAL COUNCIL Water Programme

Other layers

- Certain land uses
 - e.g., “natural state” catchments, urban areas, other?
- Receiving environments
 - e.g., estuaries, wetlands
- Permanent modification
 - e.g., dams, heavily modified channels/drainage?
- Social and cultural
 - e.g., rohe, community
- Locally specific values
 - see values maps
- Connections with groundwater
- Other?

33

BAY OF PLENTY REGIONAL COUNCIL Water Programme

Group exercise

1. Pim to discuss staff first draft
2. Group to use A3 map and
3. Move around the map layers (any order)
4. Draw any suggested changes on your own map
5. Note down why – feedback sheet
6. Share back main points

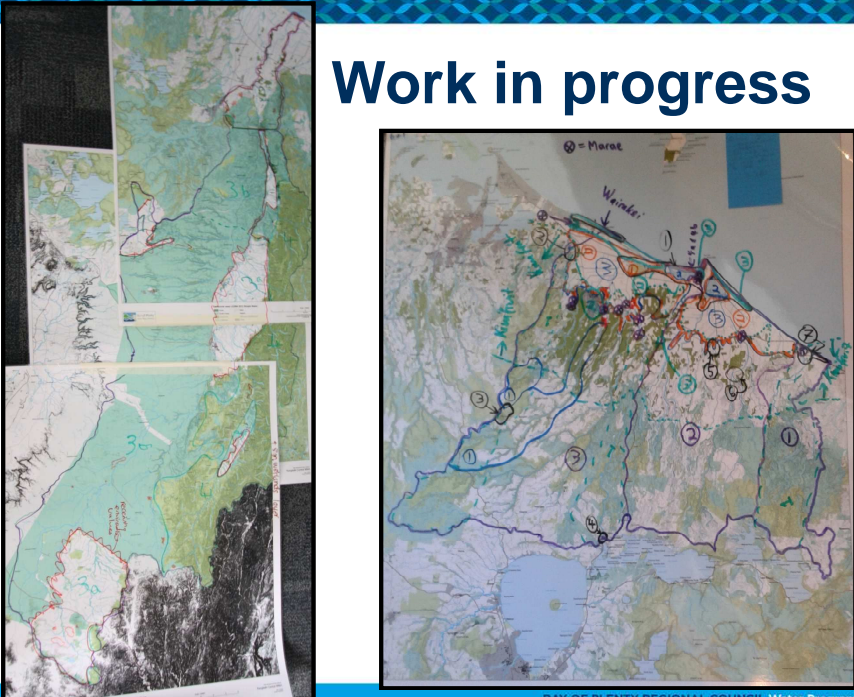
Keep in mind the purpose:

- What key factors are likely to mean that we'll have quite different freshwater quality (and quantity) objectives in one part of the WMA compared to another?
- Where is the line between?

34

BAY OF PLENTY REGIONAL COUNCIL Water Programme

Work in progress



35

BAY OF PLENTY REGIONAL COUNCIL Water Programme

Summary

- Programme of work
- Values Framework
- Values maps
- Attributes
- FMUs
- Actions

- In closing...
 - Any feedback to us on this session?
 - Project review coming up
- Next meeting.....
- Talk to others

 - The key highlight/achievements from this session
 - Ask - what would they have added to the session?