



Pongakawa/ Waitahanui Community Group

Workshop 1



BAY OF PLENTY REGIONAL COUNCIL
TOI MOANA

BAY OF PLENTY REGIONAL COUNCIL Freshwater Futures



Welcome



Thank you

- Nau mai haere mai, welcome and we are looking forward to working together

**Kaua e rangiruatia te hāpai o te hoe;
e kore tō tātou waka e ū ki uta.**

Do not lift the paddle out of unison or our canoe will never reach the shore.

From "Ngā Pepeha a ngā Tipuna, Mead and Grove, 2004

BAY OF PLENTY REGIONAL COUNCIL Freshwater Futures

Housekeeping

- Fire protocol
- Toilets
- Meals
- Recording process
- Make yourself at home



[MfE waterquality](#)

BAY OF PLENTY REGIONAL COUNCIL Freshwater Futures

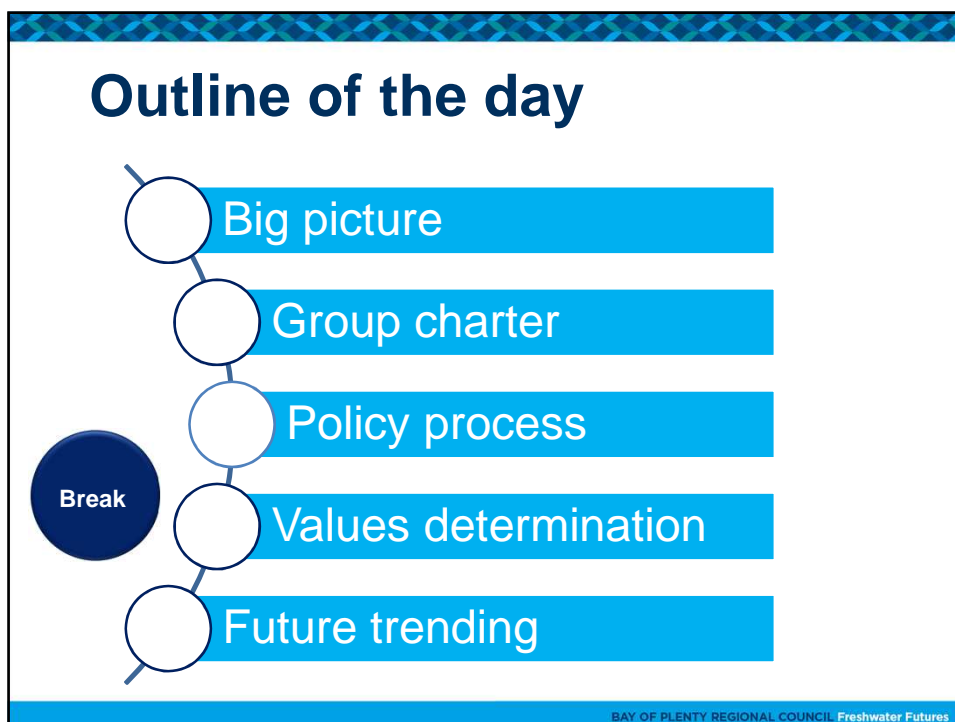
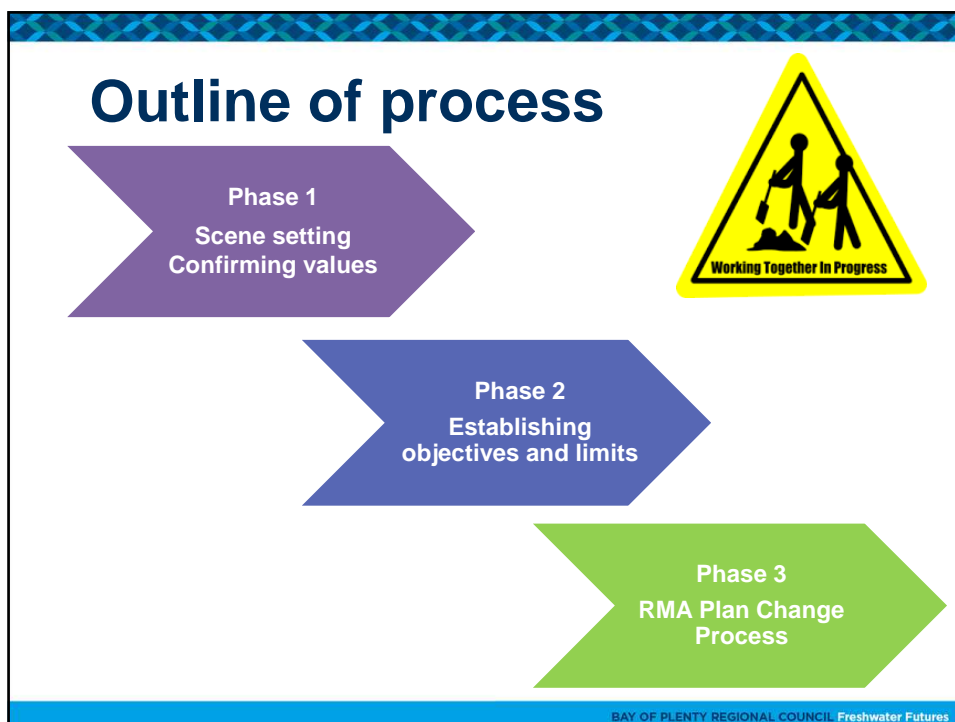
Purpose of this group....



Is to help Council implement the National Policy Statement for Freshwater Management:

- confirm and translate values, objectives and limits for freshwater quality and quantity within this catchment
- recommend solutions for managing water to meet those limits
- advise Council in their decision-making for Plan change

BAY OF PLENTY REGIONAL COUNCIL Freshwater Futures



What's your driver?

Share:

- your name
- interest you represent
- what 'drove' you to be part of this



BAY OF PLENTY REGIONAL COUNCIL Freshwater Futures

Pongakawa/ Waitahanui Community Group

Things to ponder...when we are ready

- Terms of Reference
- Gaps in membership
- Chair
- Carparking

BAY OF PLENTY REGIONAL COUNCIL Freshwater Futures

Councillor Nees' role

- Represent Bay of Plenty Regional Council
- Fully participate in the Community Groups (CG) discussions
- Offer insights from Council and wider community
- Represent CG within Council
- Councillors will not vote at CG

BAY OF PLENTY REGIONAL COUNCIL Freshwater Futures

Staff supporting you

- Relationship manager
- Project manager
- Land management
- Planner
- Pollution Prevention
- Scientist
- Consents
- Māori Policy
- Facilitator
- Project Coordinator

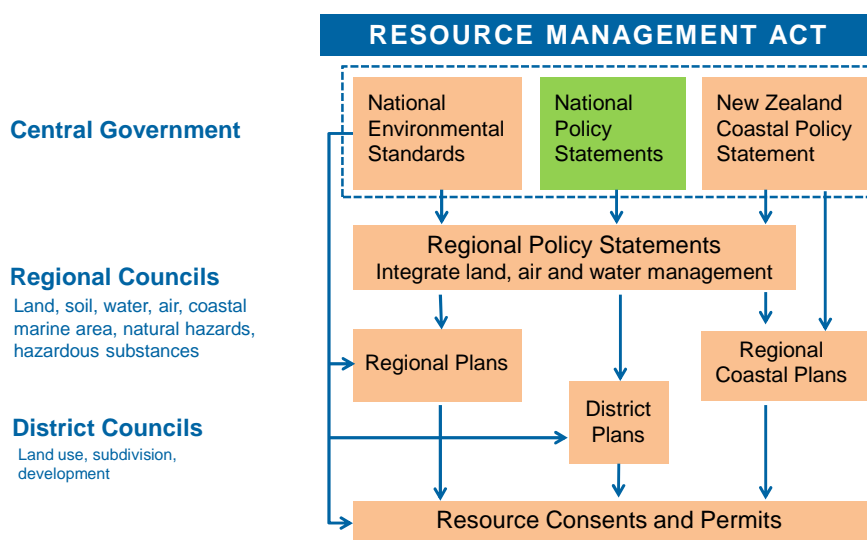
BAY OF PLENTY REGIONAL COUNCIL Freshwater Futures

So what is this all about?

- National picture
- Council's direction



Resource Management in NZ



National Policy Statement for Freshwater Management

- Safeguard life supporting capacity, ecosystem processes, indigenous species, health of people and communities (secondary contact)
- Water quality maintained or improved
 - Protect significant values of outstanding freshwater bodies and wetlands
- Allocate and use water efficiently
- Avoid over-allocation or phase out over-allocation

NATIONAL POLICY STATEMENT

for Freshwater Management 2014

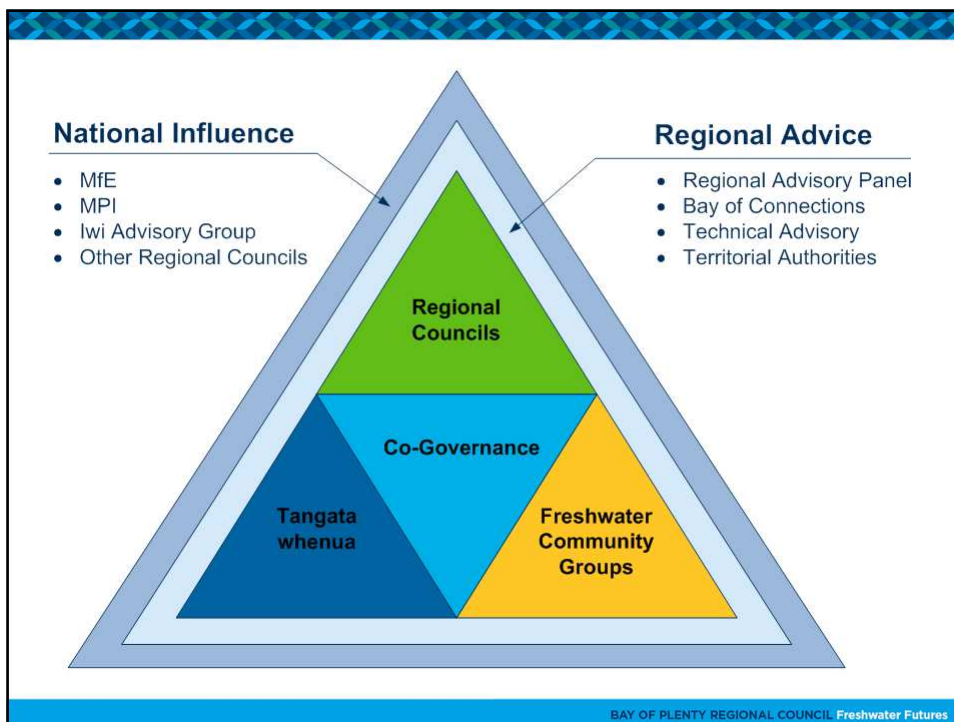
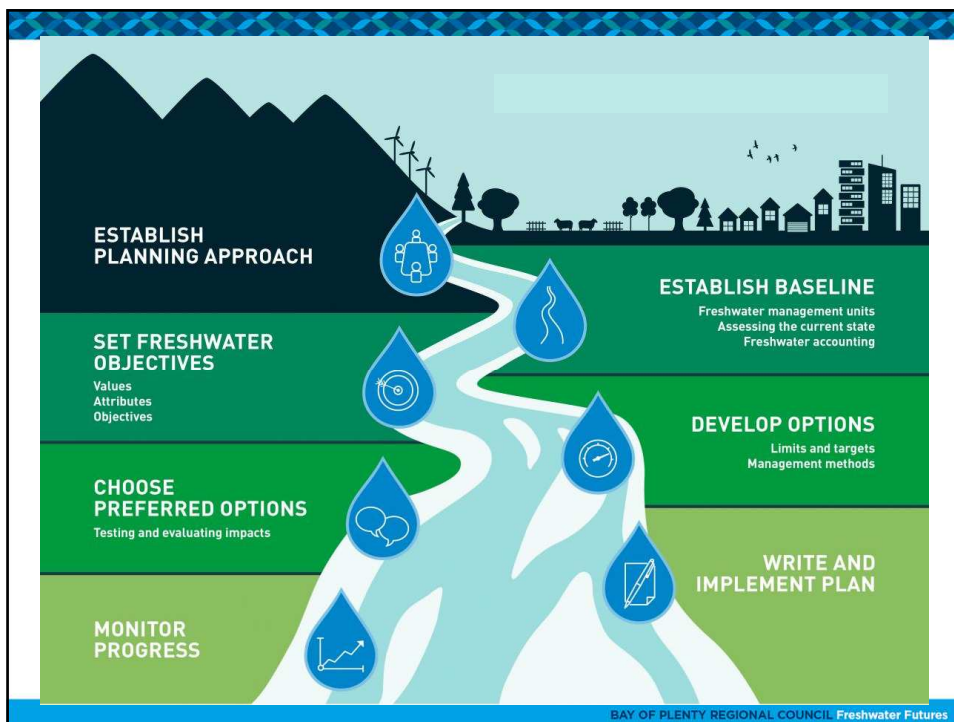
Operative
Bay of Plenty Regional Water and Land Plan

NATIONAL POLICY STATEMENT
for Freshwater Management 2014
Issued by notice in gazette on 4 July 2014

Working with our communities for a better environment
E mahi kōwhiri e pūkeke ai i te taiao

newzealand.govt.nz

BAY OF PLENTY REGIONAL COUNCIL Freshwater Futures



How decision making will happen

BAY OF PLENTY REGIONAL COUNCIL Freshwater Futures

Regional Freshwater Management Framework



Bay of Plenty Regional
Freshwater Management
Framework 2015

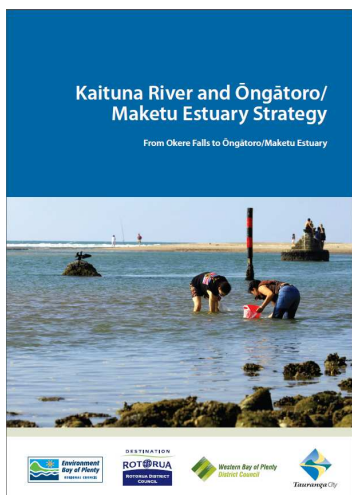
Te Pou Tarāwaho Whakahaere
Wai Māori o Te Rohe o Toi Moana



- Focus on outcomes
- Inclusive
- Kaitiaki of water
- Grounded in best knowledge
- Precautionary in our approach
- Agile
- Responsible

BAY OF PLENTY REGIONAL COUNCIL Freshwater Futures

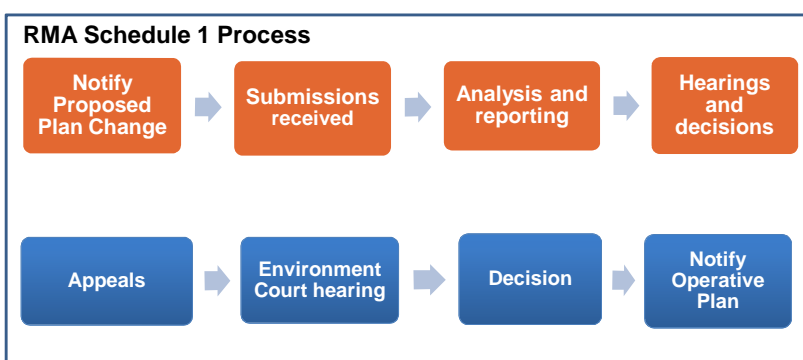
Kaituna specific strategies



2009 strategy identifies vision, issues, outcomes

Updated strategy under development

Plan Change Process



Flexible



In conclusion



BAY OF PLENTY REGIONAL COUNCIL Freshwater Futures

Summary

<p>NPSFM</p>		<p>NATIONAL POLICY STATEMENT for Freshwater Management 2014 <small>issued by notice in gazette on 4 July 2014</small></p>
	<p>framework</p>	
		<p>RMA</p>

BAY OF PLENTY REGIONAL COUNCIL Freshwater Futures

Working together

Clean

next generation
part of the story
healthy biodiversity
poua

What do you
want water to
be?

Kia kore ai o mātou uri whakakāke
e āwangananga mā ētahi
kinotanga i roto i te wai.



Effective communication.mp4

BAY OF PLENTY REGIONAL COUNCIL Freshwater Futures

Working together charter

- What behaviours do you expect from one another e.g. *active listening*



- What do you expect of the process e.g. *open and transparent*

BAY OF PLENTY REGIONAL COUNCIL Freshwater Futures

Group consensus process



We are seeking Consensus.

Consensus decision-making is a group decision-making process in which group members develop, and agree to support, a decision in the best interest of the whole.

Consensus may be defined professionally as an acceptable resolution, one that can be supported, even if not the "favourite" of each individual.

BAY OF PLENTY REGIONAL COUNCIL Freshwater Futures

Group consensus process



- Consensus
- Gradients of Agreement for more stage gate decisions – *acceptable, tolerable, intolerable*

Are we aiming for 100% support or

- Acceptable..... 90%?
- Tolerable (I can live with that)..... 75%?
- Intolerable 55%?

BAY OF PLENTY REGIONAL COUNCIL Freshwater Futures

Quick feedback 'fist of five'

- 1 - not even on the same rugby field
- 2 - not really
- 3 - okayish
- 4 - close
- 5 - spot on



BAY OF PLENTY REGIONAL COUNCIL Freshwater Futures

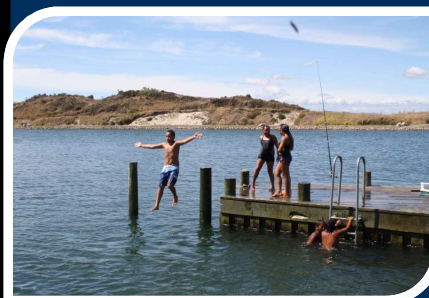
Our Values

Clean

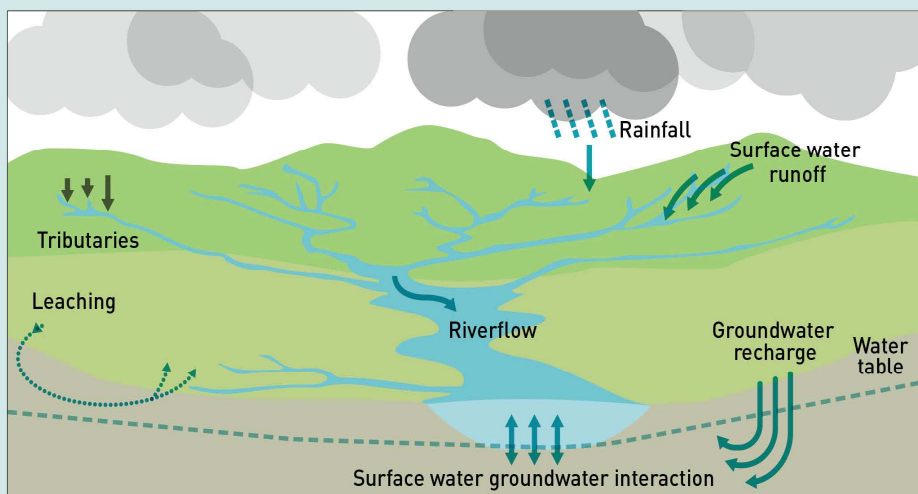
next generation
part of the story
healthy biodiversity
poua

What do you want water to be?

Kia kore ai o mātou uri whakakāke
e āwangananga mā ētahi
kinotanga i roto i te wai.



The water system



SOURCE: Adapted from DairyNZ

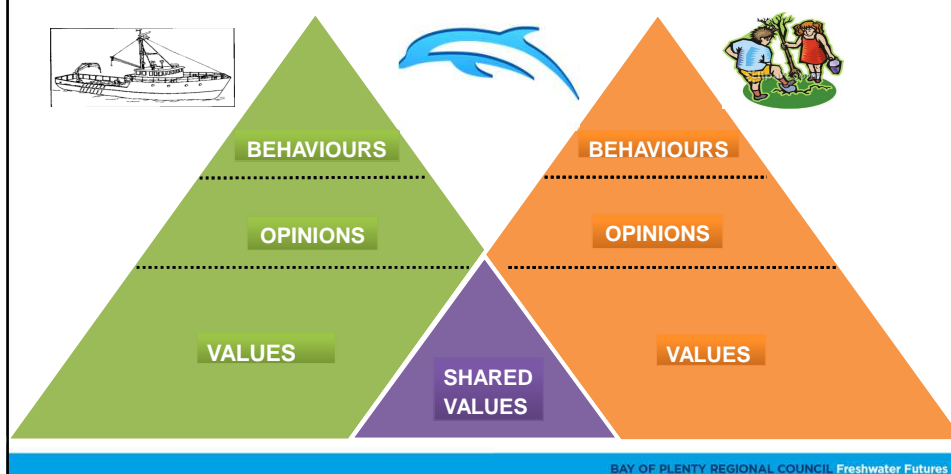
BAY OF PLENTY REGIONAL COUNCIL Freshwater Futures

Values are:

- intrinsic qualities, uses or potential uses associated with fresh water.
- qualities or uses that people and communities appreciate about freshwater bodies and wish to see recognised in the on-going management of those freshwater bodies.
- National Policy Statement has two compulsory values

BAY OF PLENTY REGIONAL COUNCIL Freshwater Futures

No one wants to kill a dolphin....



Our Values

1. **Your values** – what do you value most about your water management area? *write as many as you like*

Write these values with felt tip

- one per paper *2-3 words*

(include a brief description of why)



Our Values

2. **Choose your top 5 - 7**

keep others in a pile for later

Our Values

3. Compulsory National values

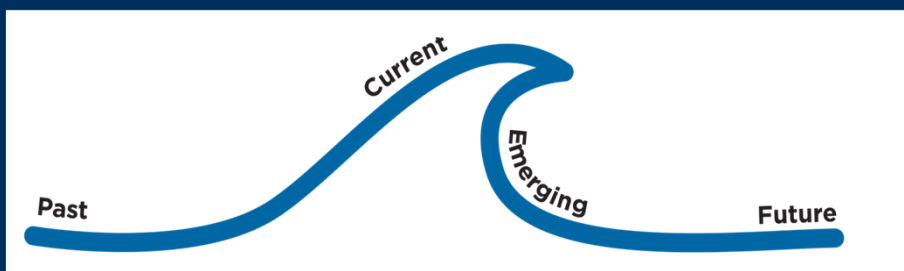
- Te Hauora o te wai/the health and mauri of the water (Ecosystem Health)
- Te Hauora o te Tangata/ the health and mauri of the people (Human Health)
- Most significant values
 - *anyone else got similar?*
- Grouping/Titles

BAY OF PLENTY REGIONAL COUNCIL Freshwater Futures



BAY OF PLENTY REGIONAL COUNCIL Freshwater Futures

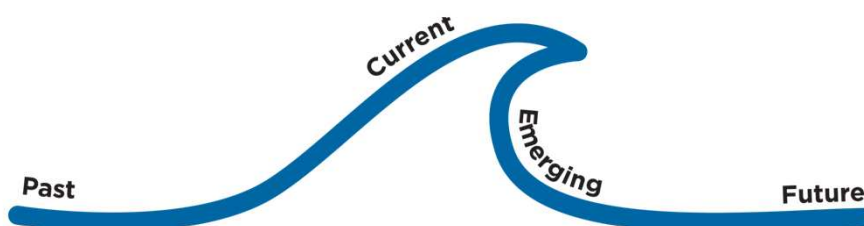
Trends



Big picture thoughts

Mapping changes

- What's current
- What was happening 20/50 years ago
- What's on the horizon
- What's coming in 20/50 years



Scenarios are:

A tool for:

- understanding connections
- understanding consequences of 'what if' questions
- investigating acceptability of different outcomes or states
- exploring a plausible future with transparent assumptions

They are not management options

BAY OF PLENTY REGIONAL COUNCIL Freshwater Futures

Why scenarios?

- to give us a clear picture of what the future might look like – for everyone's values, if we did certain things (including limits) in the plan. Their costs, benefits and consequences.
 - It's about the 'what if' questions... WHAT IF
 - ...we run with the status quo
 - ...we run with future changes with no change management in place
 -we managed differently

BAY OF PLENTY REGIONAL COUNCIL Freshwater Futures

Remembering that...

- Need to consider:
 - implications for people, communities and resource users
 - the effects of climate change
 - potential changes to land use
 - the likely future state of water quality and quantity

BAY OF PLENTY REGIONAL COUNCIL Freshwater Futures

Checking back.....

- Terms of Reference – changes?
- Gaps in CG membership
- Chair – voting
- Check carpark/burning questions

BAY OF PLENTY REGIONAL COUNCIL Freshwater Futures

To do before next session:

- Talk to others
- The key highlight/achievements
- Ask for their views
- Promote the drop-in session
- Read the Fact Sheets before next session
- Check out the portal – login to be sent

BAY OF PLENTY REGIONAL COUNCIL Freshwater Futures

Wider Community Input

- There is a public drop in session from 4pm - 6:30pm today, here tonight
- Hui-ā-Iwi at the Waitangi Marae, Te Puke starting with a powhiri at 9am on Tuesday 8 December

BAY OF PLENTY REGIONAL COUNCIL Freshwater Futures

Closing



- In summary:
 - what covered/achieved over the day?
 - any feedback to us on this session?

Thanks.... Ka kite anō

