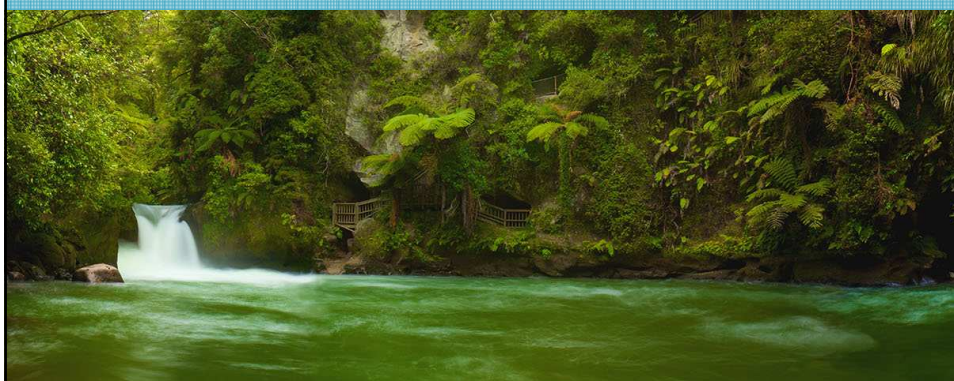


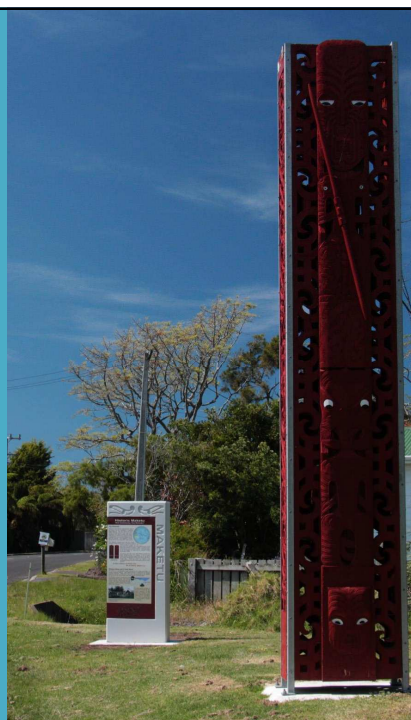
Te Kaupapa o te hui

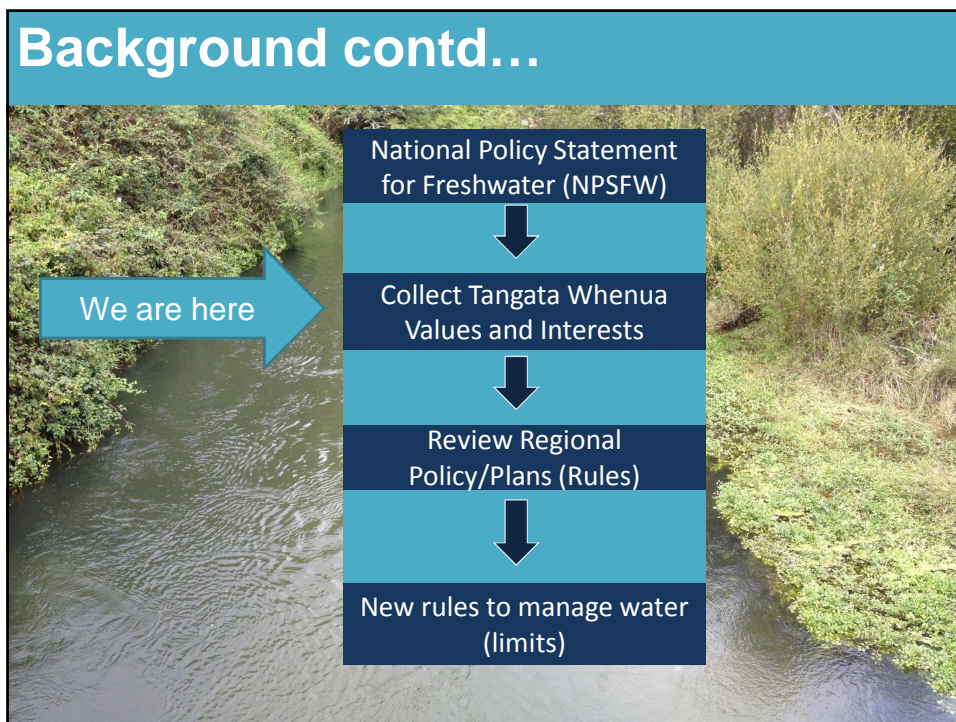
“To identify tangata whenua values and interests in fresh water and its ecosystems on the Kaituna/Maketū & Pongakawa/Waitahanui waterways (and all creeks and streams that flow into them)”

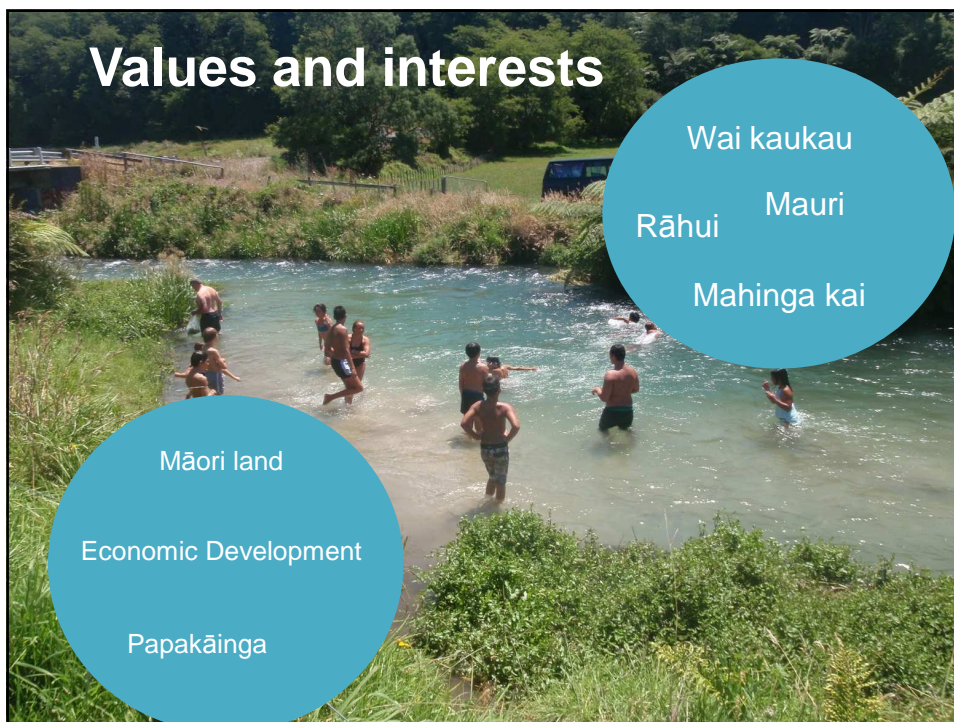
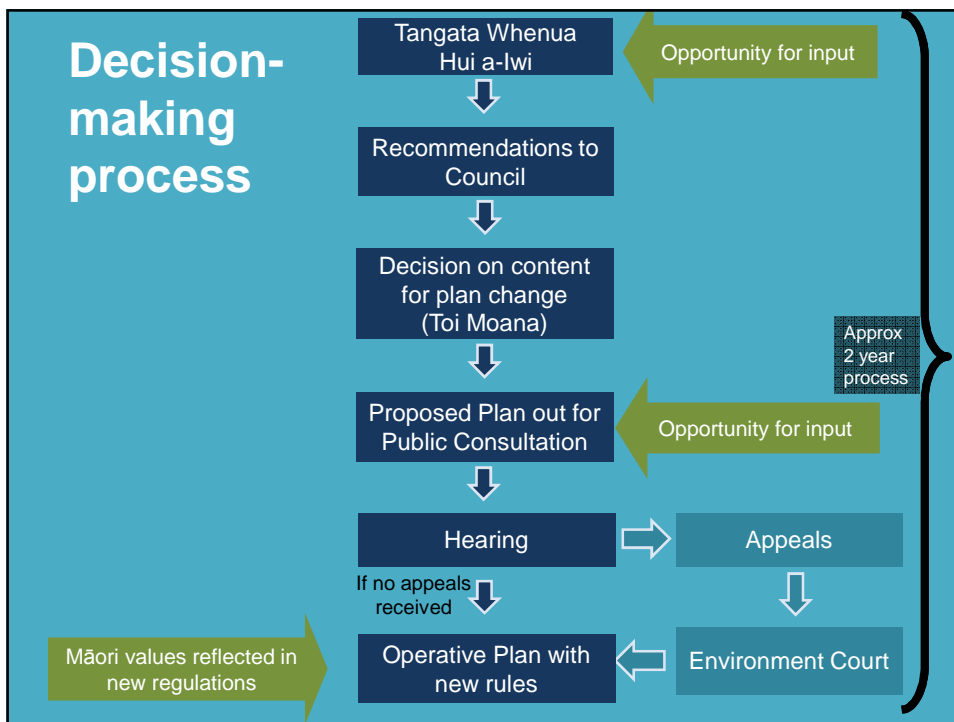


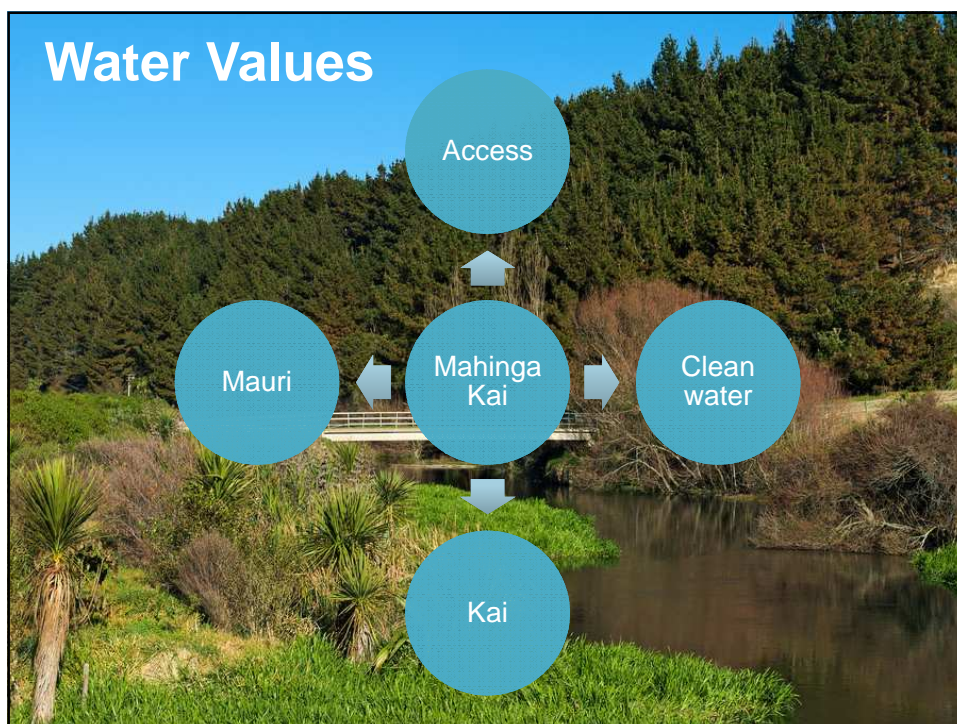
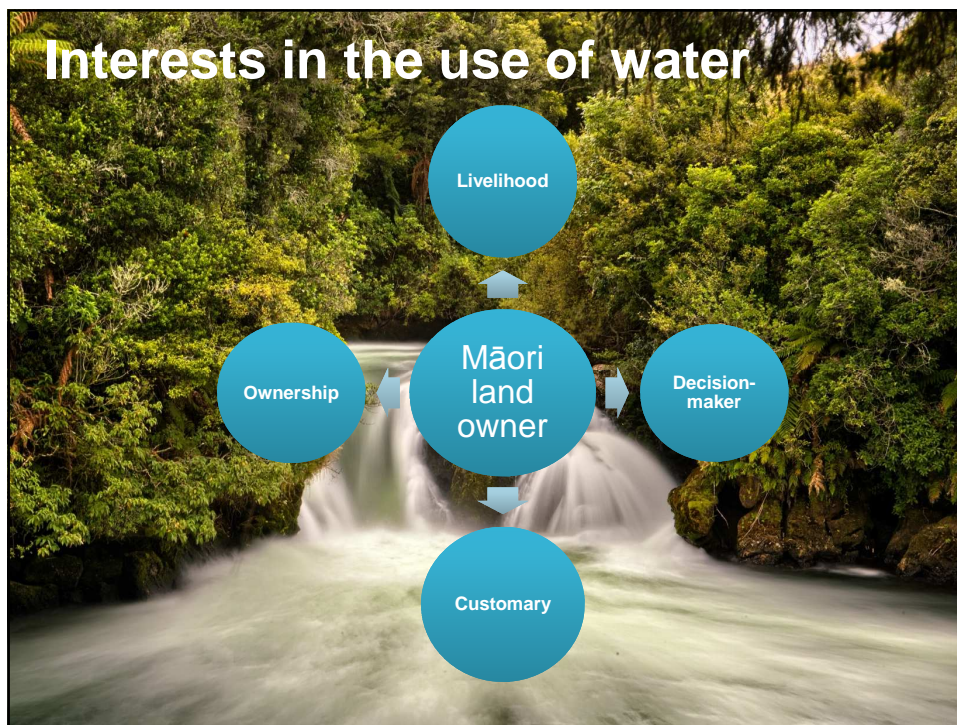
Iwi/Council Landscape

- Treaty settlements
- Te Maru o Kaituna
- Statutory Acknowledgements
- Kaituna Strategy
- Kaituna River document (new)
- Iwi and Hapū Management Plans
- Cultural Impact Assessments









Two Compulsory Values (NPSFW)

- Te mauri o te wai/ the health of the water
- Te hauora o te tangata/ the health and mauri of the people





More input?

Make sure you fill out our attendance register!

Hui:

- Hands on Water Expo (100 Allport Road, Paengaroa) – tomorrow 9.12.15
- Individual hui on request
- Komiti Māori hui 15 Dec 2015 at Kōkōhinau Marae
- Further hui in the New Year

Kaituna/Maketū Community Group Māori members:
Hohepa Maxwell, Maria Horne, Vivienne Robinson, Manu Wihapi

Pongakawa/Waitahanui Community Group Māori members:
Kura Paul-Burke, Geoff Rice, Melv Anderson, Te Awhi Anderson



For further input contact:

Raina Meha-Rangitauira, Clarke Koopu or Jane
Waldon
Toi Moana

Phone: 0800 884 880

Email: raina.meha-rangitauira@boprc.govt.nz
clarke.koopu@boprc.govt.nz
jane.waldon@boprc.govt.nz

Tēnā koutou katoa!