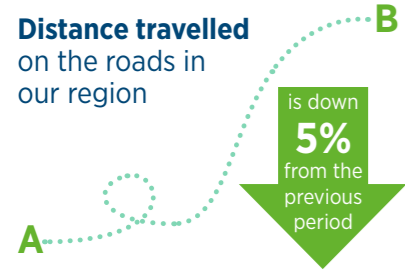


LAND USE & TRANSPORT INTEGRATION

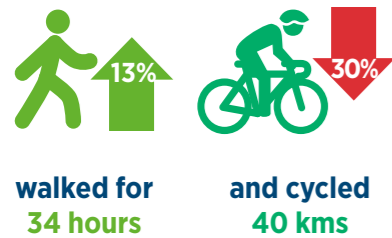
Distance travelled on the roads in our region



The annual number of trips on public transport has decreased by **2.6%** from the previous year



This year each person on average...

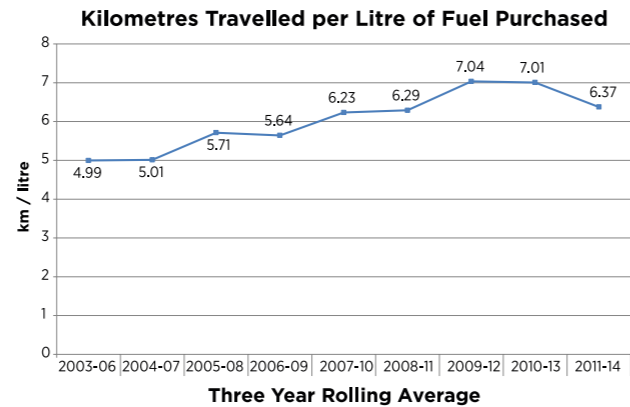


ENERGY EFFICIENCY

The distance Tauranga residents travelled in single occupancy vehicles is **down from the previous period**

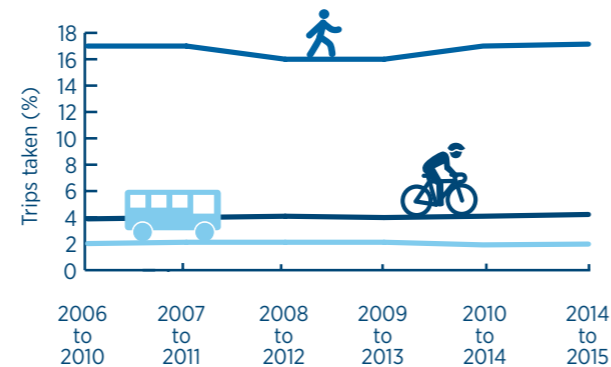


Kilometres travelled per litre of fuel purchased was **down 5% on the previous period**



ACCESS & RESILIENCE

The proportion of trips people took on foot, cycling or by public transport has remained the same.



Regional Land Transport Plan

Annual Report Card

2014/15



THE REPORT AT A GLANCE

AFFORDABILITY

Local roads cost **\$6,392** per lane km to maintain while smooth travel exposure was **88.9%**



State highways cost **\$24,010** per lane km to maintain



Track quality on the East Coast Main Trunk rail line **declined 6%**



ENVIRONMENTAL SUSTAINABILITY

Levels of particulate (PM10) in Rotorua **exceeded the national environmental standard** on 12 occasions in 2014 (transport accounts for around 17% of PM10 emissions in Rotorua)



Average annual nitrogen dioxide concentrations were **28.5 micrograms/cubic metre of air** at 3 state highway sites in Tauranga (concentrations above **30 micrograms** may cause adverse effects on public health)



TARGETS

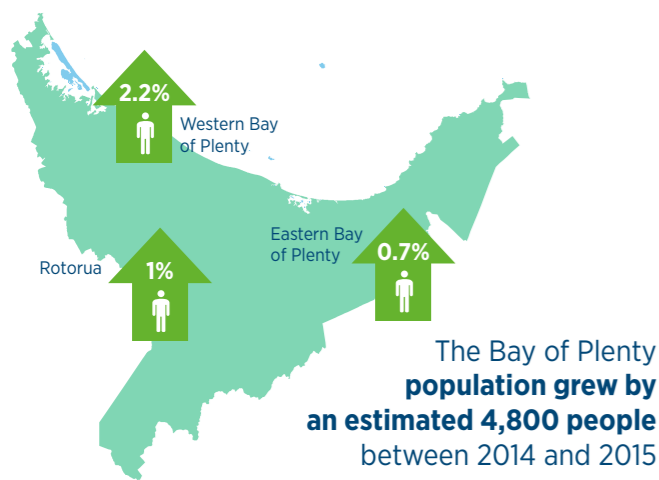
ECONOMIC PERFORMANCE		SAFETY		LAND USE & TRANSPORT INTEGRATION		ENERGY EFFICIENCY		AFFORDABILITY	
Regional GDP	B	Road Trauma*	✓	Person kms	✓	Energy Use	B	Local Road Condition/cost	B
Contribution to National GDP	B	Alcohol*	✓	Public Transport	✗	Single Occupancy Vehicles*	✗	State Highway Condition/cost	ND
Network Reliability	✗	Speed*	✓	Time Walking	✓	ACCESS & RESILIENCE		Rail Track Quality	B
Rail Freight	✓	Rail Trauma	B	Distance Cycled*	✗	Sustainable Mode Share*	✓	ENVIRONMENTAL SUSTAINABILITY	
						Network Resilience	ND	Unsealed Roads	ND
						Public Transport Reliability	ND	Particulate Matter*	✓
								Nitrogen Dioxide	B

B = Baseline Established

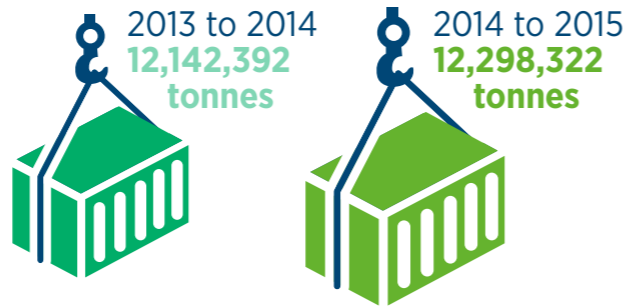
* = Measured against previous RLTS target

ND = No/insufficient data

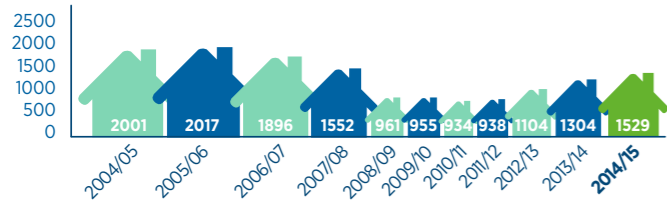
DEMAND INDICATORS



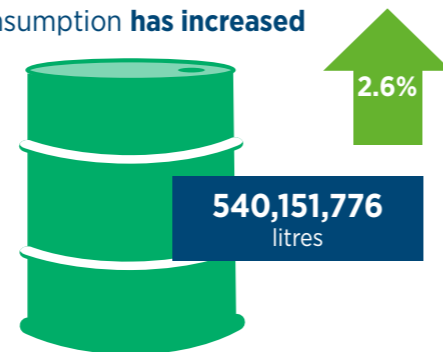
Export volumes loaded at the Port of Tauranga increased 1.3% in the last year



Housing development is steadily increasing



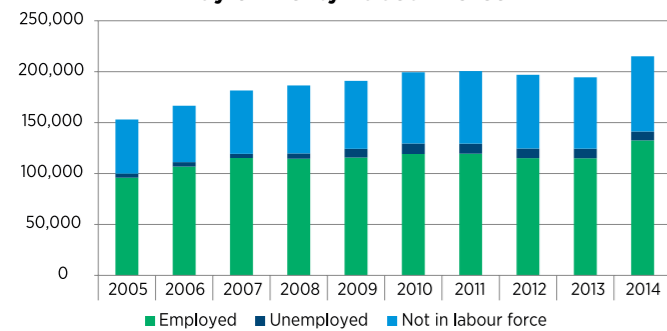
Fuel consumption has increased



56% of the fuel sold was DIESEL

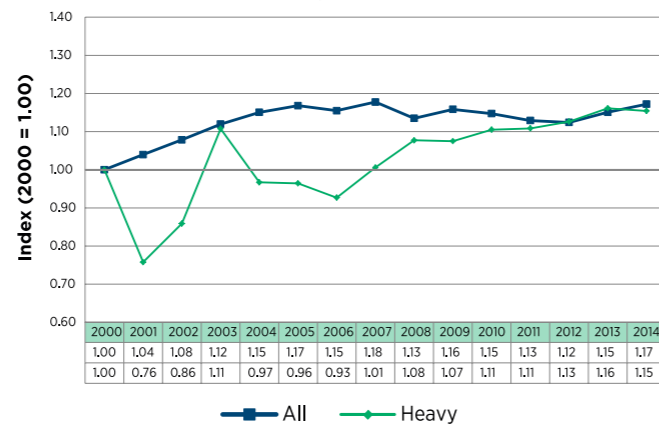
The employed labour force is growing

Bay of Plenty Labour Force



Overall state highway traffic volumes increased while heavy vehicle volumes decreased slightly

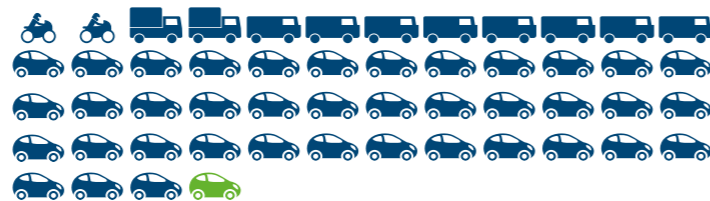
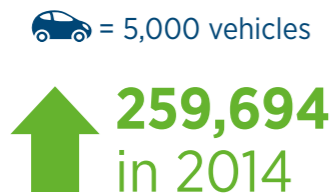
Indexed Bay of Plenty State Highway Traffic Volumes (continuously monitored sites)



The regions' vehicle ownership rate is 0.84 per capita compared with 0.74 for New Zealand as a whole

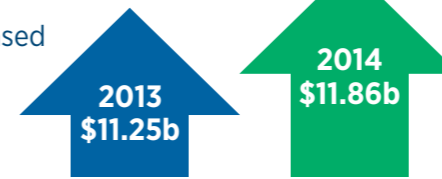


The region's road vehicle fleet has increased by almost 5000 in the past year

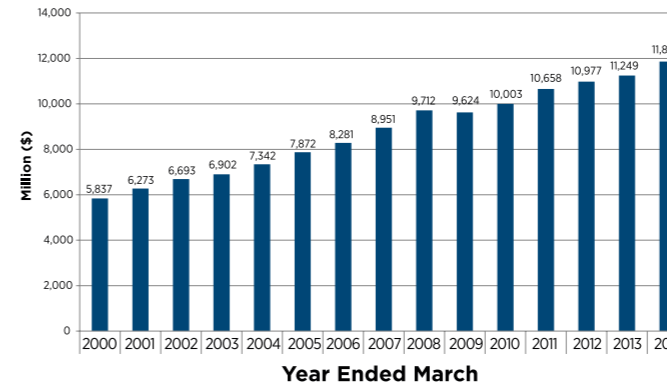


ECONOMIC PERFORMANCE

Regional GDP increased by 5.4%

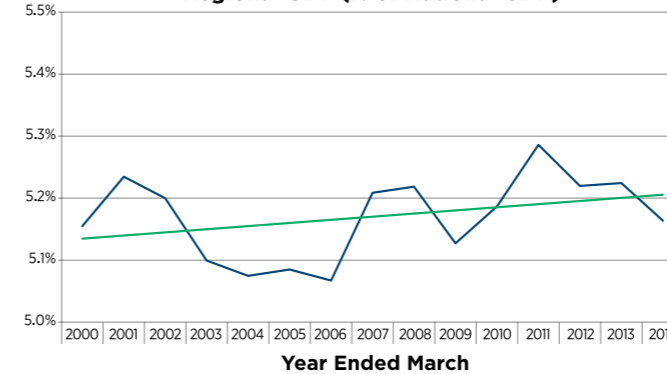


Regional Gross Domestic Product



Regional GDP as a proportion of National GDP decreased slightly

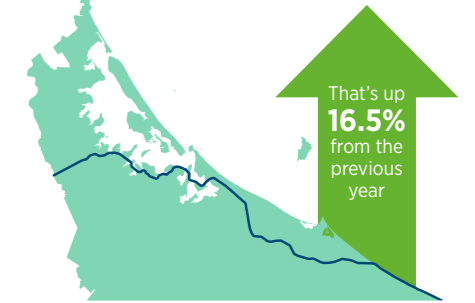
Regional GDP (% of National GDP)



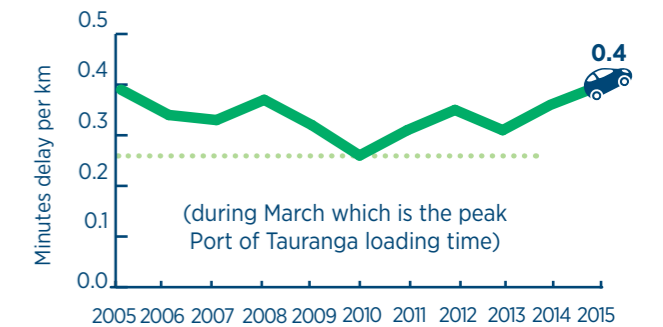
1.107 billion net tonne kilometres (weight x distance) of rail freight was moved to/from or within the region



More than 360,000 containers were carried on the East Coast Main Trunk Rail Line

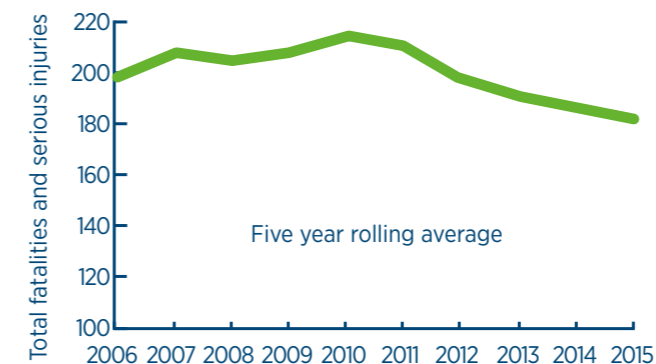


Road congestion in Tauranga increased for the second year in succession



SAFETY

Fatalities and serious injuries on our roads continued to decrease in 2015



Alcohol contributed to 10% of all deaths and serious injuries.



There was 1 injury and 0 deaths on the Bay of Plenty rail network in 2014.

Speed contributed to 18% of all deaths and serious injuries.

