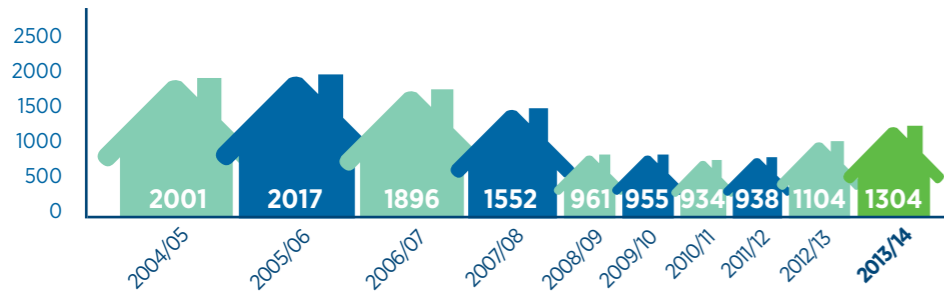
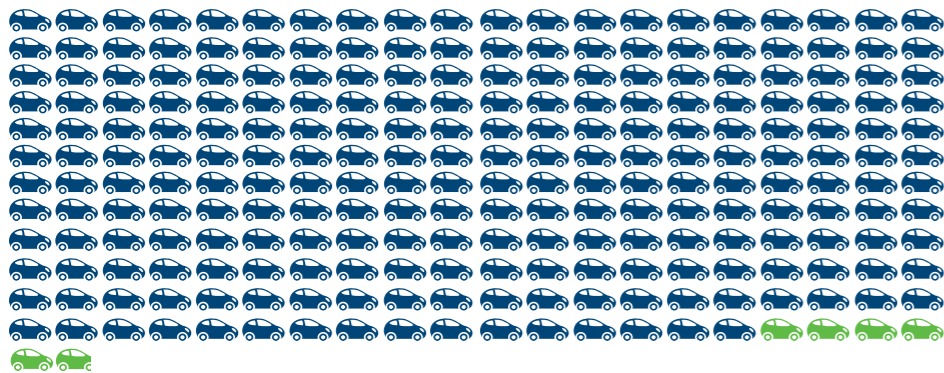


# Regional Land Transport Strategy Annual Report Card



Housing development has **rebounded slightly**

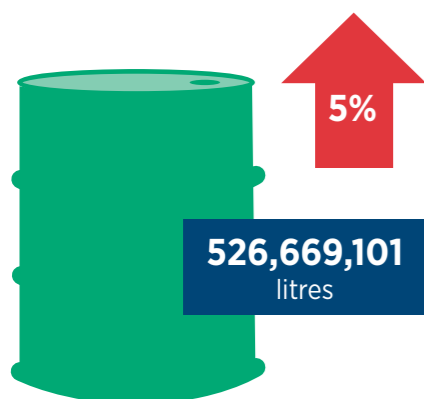
The region's road vehicle fleet has **increased by almost 6000 in the past year** **241,885 in 2013**



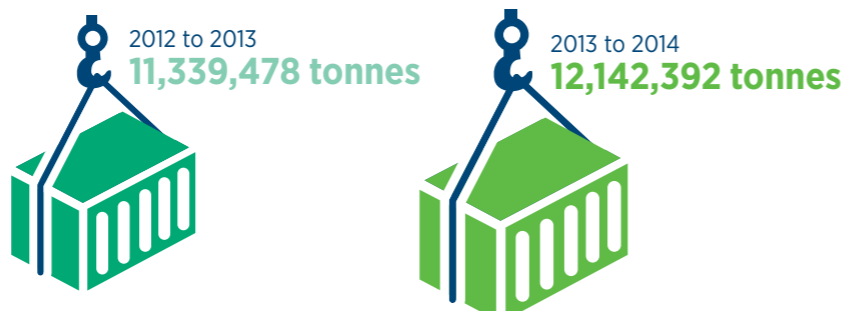
The **distance** Tauranga residents travelled in a single occupancy vehicle is **down** from the previous period



Fuel consumption has **increased**



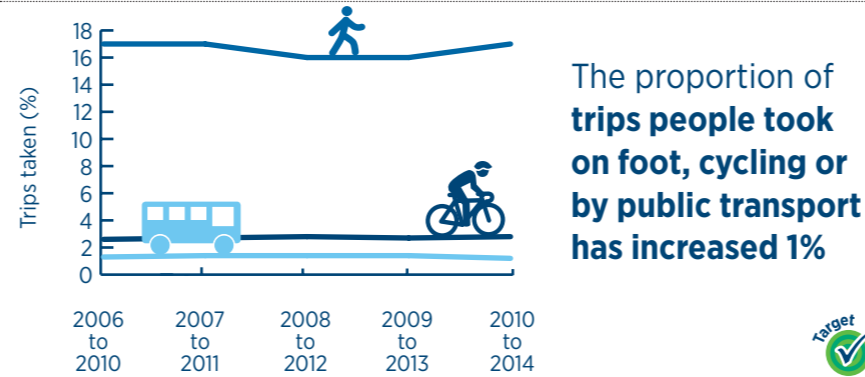
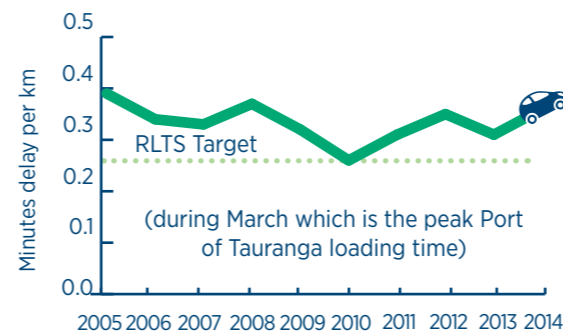
**More than 12 million tonnes of exports** were loaded at the Port of Tauranga in the last year.



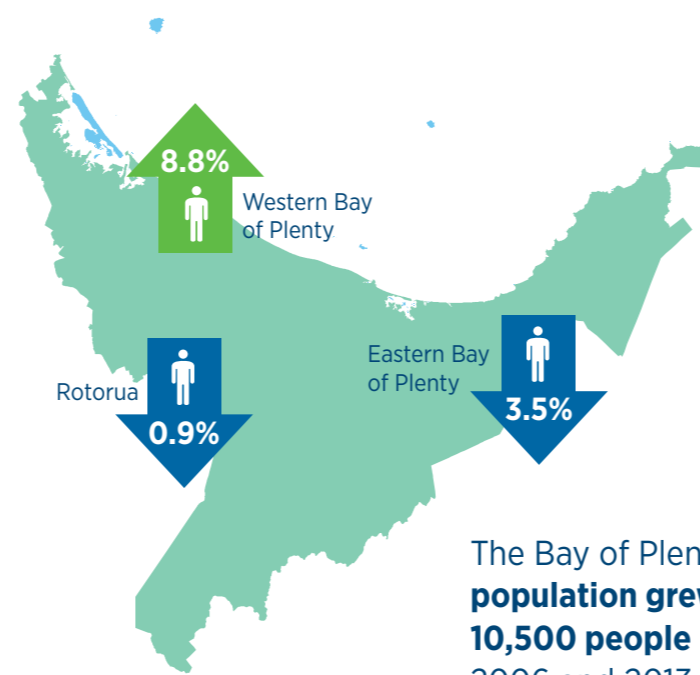
**More than 309,000** containers were carried on the **East Coast Main Trunk Rail Line**



Road congestion in Tauranga **increased slightly**

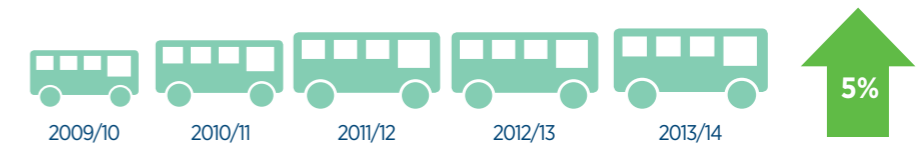


The proportion of **trips people took on foot, cycling or by public transport** has **increased 1%**

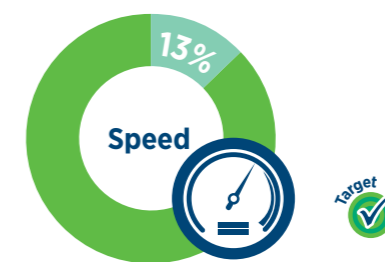
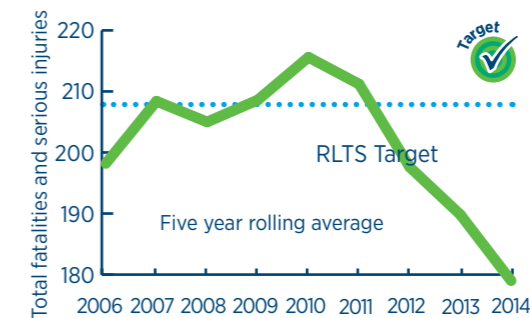


The Bay of Plenty **population grew by 10,500 people** between 2006 and 2013.

The annual **number of trips** on public transport has **increased by about 5% from the previous year**



**Fatalities and serious injuries** on our roads **continued to decrease** in 2014

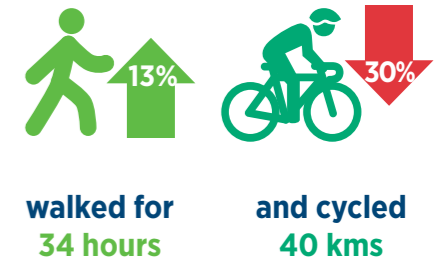


**Speed** contributed to **13%** of all deaths and serious injuries.

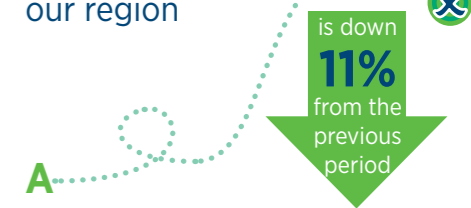


**Alcohol** contributed to **9%** of all deaths and serious injuries.

This year each person on average...



**Distance travelled** on the roads in our region



**95%** of Tauranga and Rotorua **bus users** rated the **bus services** as good, very good or excellent

**98%** of Tauranga and Rotorua **bus users** think the **level of safety on buses** was good, very good or excellent

**1.006 billion**

net tonne kilometres (weight x distance) of **rail freight** was moved to/from or within the region

