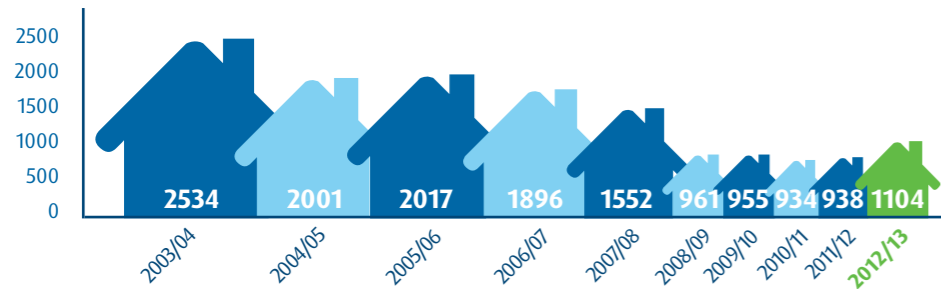


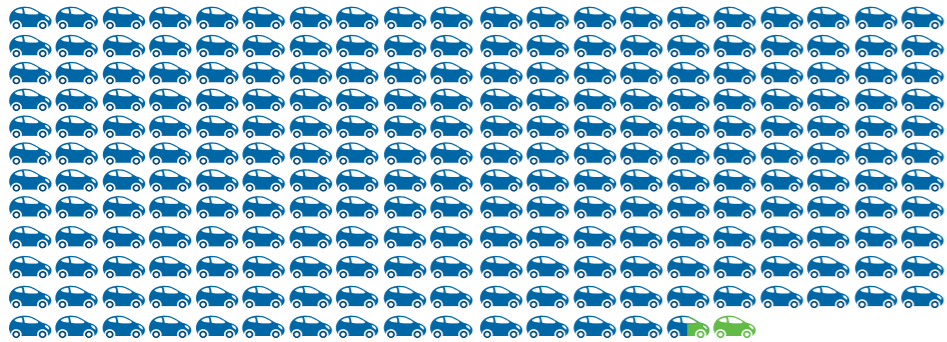
Regional Land Transport Strategy Annual Report Card

2012/13



Housing development has **rebounded slightly**

The region's road vehicle fleet has **increased by 1500 in the past year** = 1,000 vehicles **236,000 in 2012**

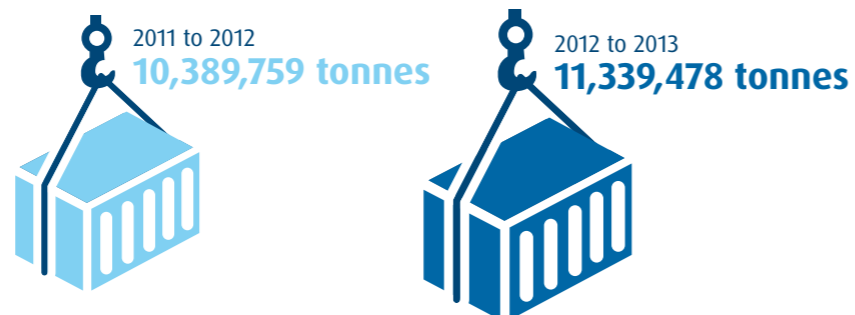


The **distance** Tauranga residents travelled in a single occupancy vehicle is **up 22%** from the previous period

Fuel consumption has **reduced 7%** from five years ago



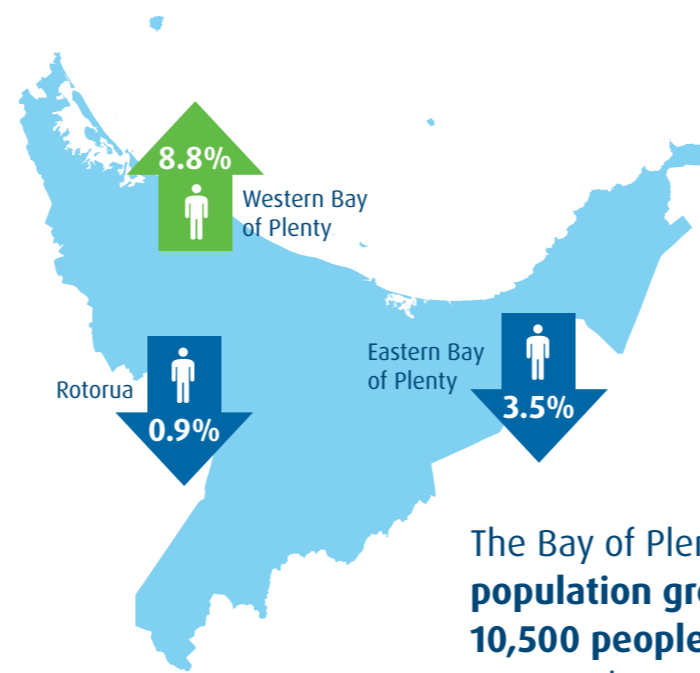
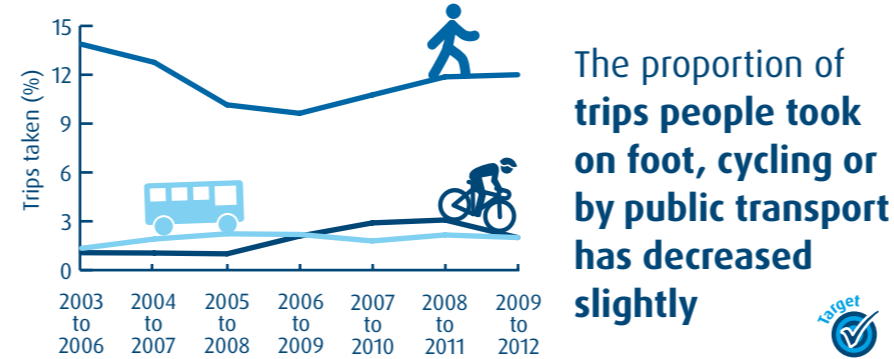
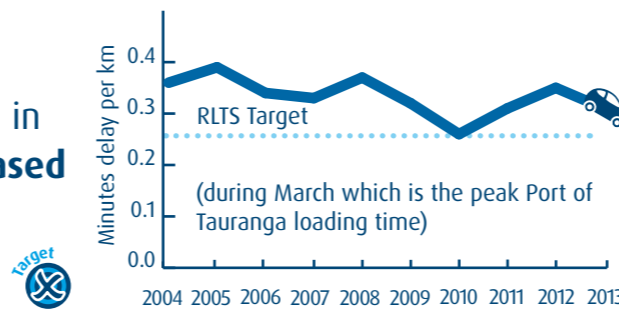
More than 11 million tonnes of exports were loaded at the Port of Tauranga in the last year. That's **one million tonnes more** than the previous year.



More than 360,000 containers were carried on the **East Coast Main Trunk Rail Line**



Road congestion in Tauranga **decreased slightly**

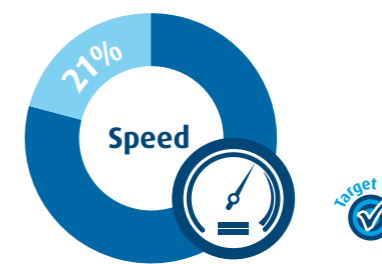
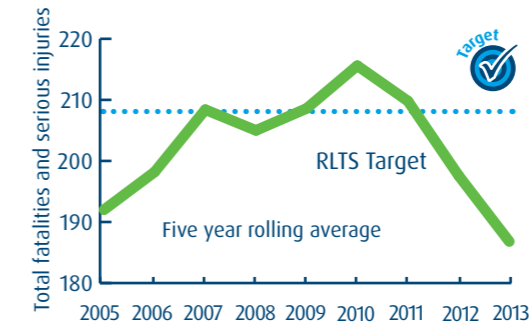


The Bay of Plenty **population grew by 10,500 people** between 2006 and 2013.

The annual **number of trips** per person on public transport has **remained about the same**



Fatalities and serious injuries on our roads **continued to decrease** in 2013

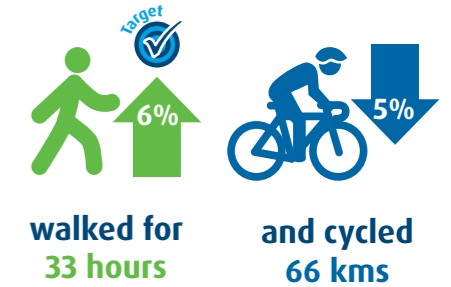


Speed contributed to **21%** of all deaths and serious injuries.



Alcohol contributed to **32%** of all deaths and serious injuries.

This year each person on average...



Distance travelled on the roads in our region is up **3%** from the previous period

94% of Tauranga and Rotorua **bus users** rated the **bus services** as good, very good or excellent

94% of Tauranga and Rotorua **bus users** think the **level of safety on buses** was good, very good or excellent

1.0057 billion net tonne kilometres (weight x distance) of rail freight was moved to/from or within the region

That's up **5%** from the previous year