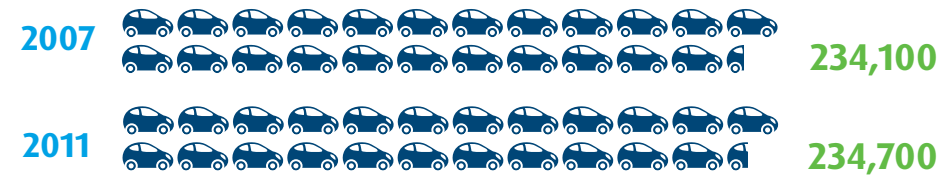


Regional Land Transport Strategy Annual Report Card

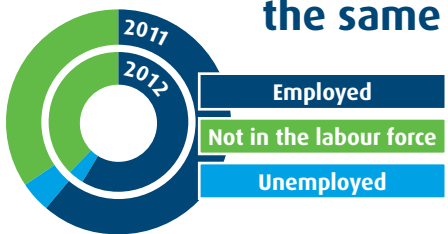
2011/12



Little growth in road vehicle numbers since 2007



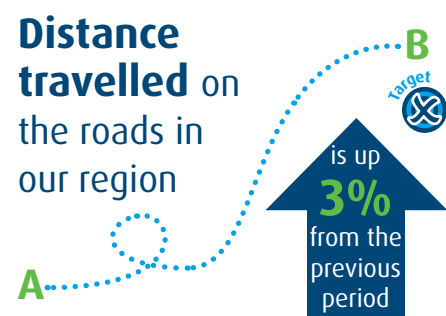
Employment rates have remained about the same



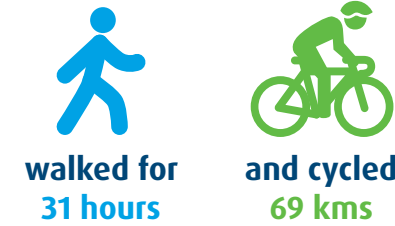
The **distance** Tauranga residents travelled in a single occupancy vehicle



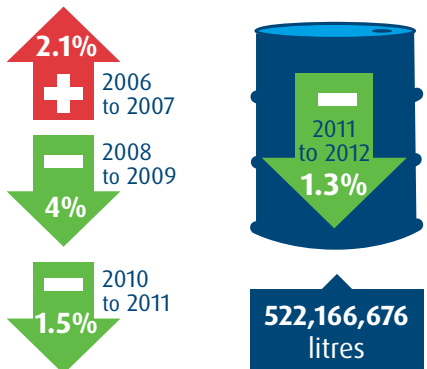
Distance travelled on the roads in our region



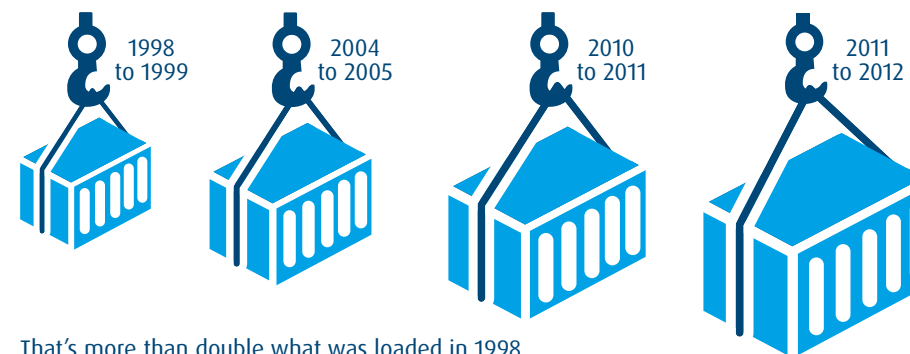
This year each person on average...



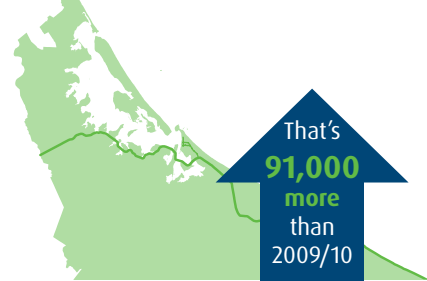
Fuel consumption has reduced



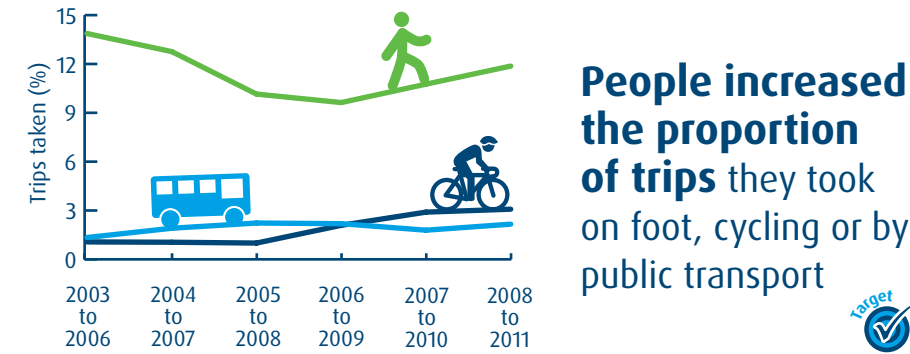
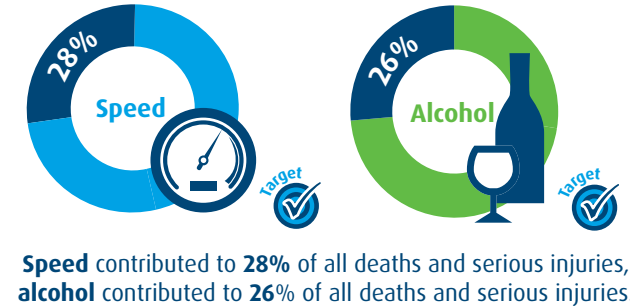
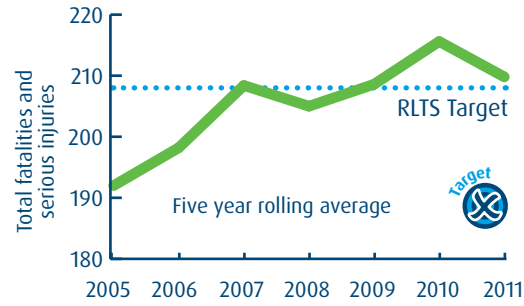
More than 10 million tonnes of exports were loaded at the Port of Tauranga in the last year



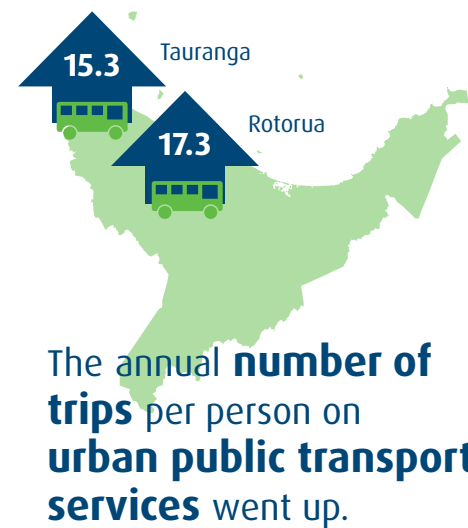
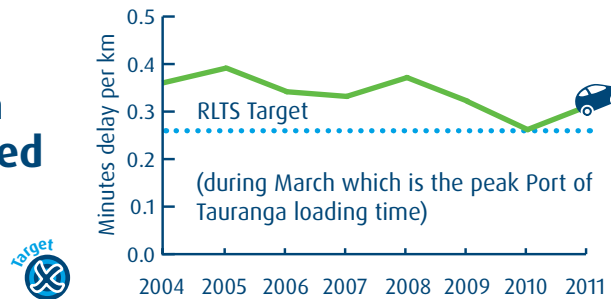
More than 332,000 containers were carried on the **East Coast Main Trunk Rail Line**



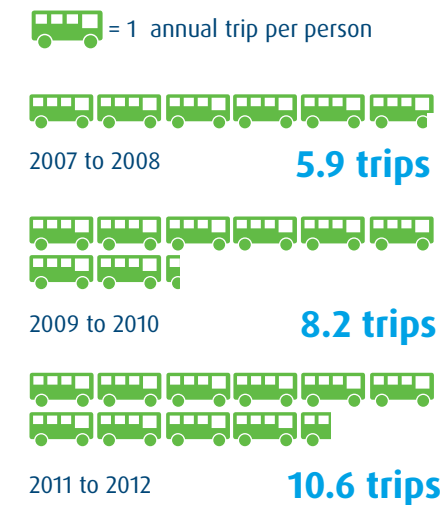
Fatalities and serious injuries on our roads decreased in 2011



Road congestion in Tauranga increased slightly



People throughout the Bay of Plenty are also using public transport more often



96% of Tauranga and Rotorua bus users rated the bus services as good, very good or excellent

of Tauranga and Rotorua bus users rated the bus services as good, very good or excellent

96% of Tauranga and Rotorua bus users think the level of safety on the bus was good, very good or excellent

of Tauranga and Rotorua bus users think the level of safety on the bus was good, very good or excellent

90% of Tauranga and Rotorua bus users think the level of safety at bus stops was good, very good or excellent

of Tauranga and Rotorua bus users think the level of safety at bus stops was good, very good or excellent

1.003 billion net tonne kilometres (weight x distance) of rail freight was moved to/from or within the region

That's **25%** more than 2010 to 2011