
Schedule 11 Reticulation Zone Maps

For the purposes of this plan any underlined area identified on the following maps is identified as a Reticulation Zone.

Operating Reticulation Zones

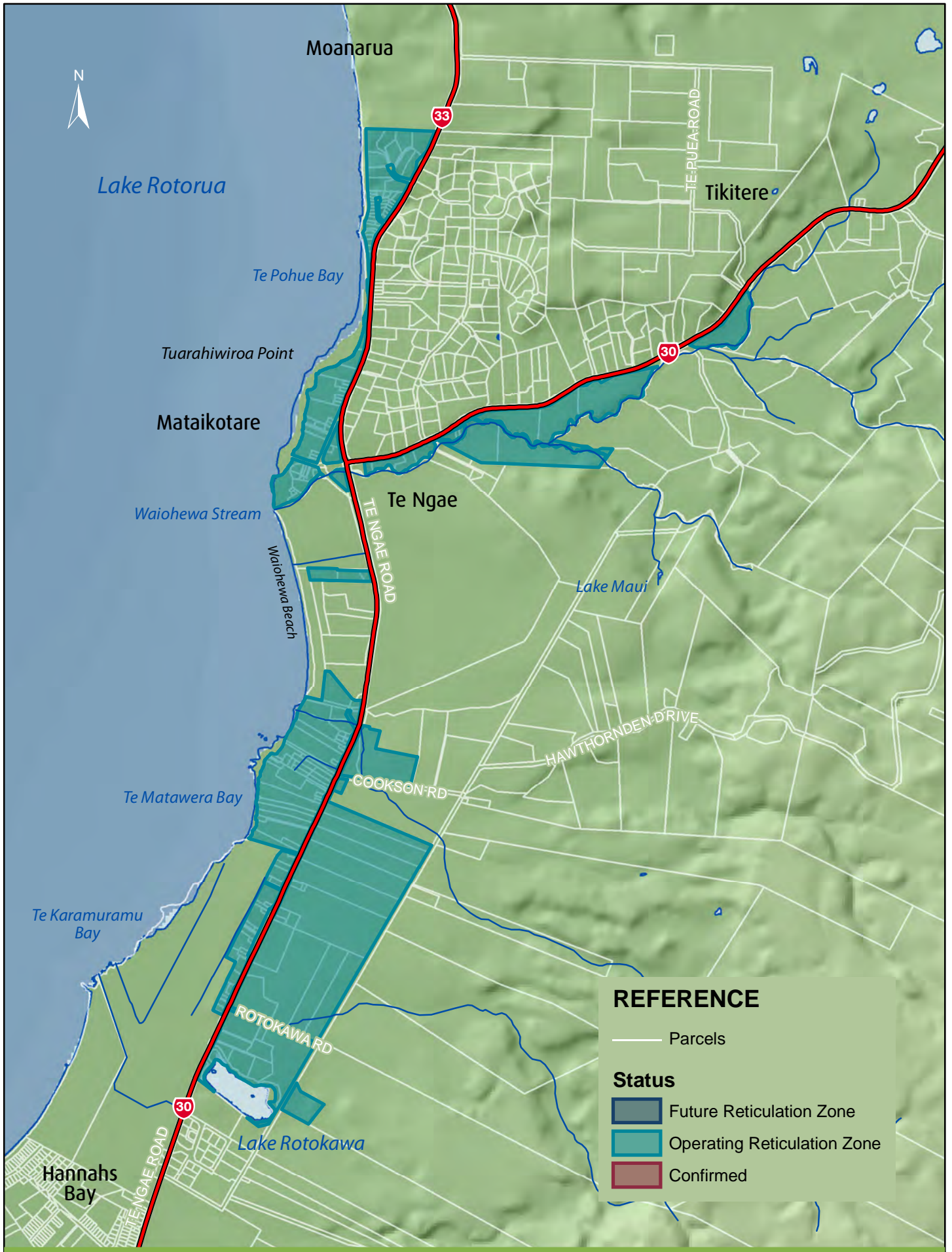
Map 20	Lake Rotorua Rotokawa
Map 21	Lake Rotorua Hinemoa Point
Map 22	Lake Rotorua Brunswick
Map 23	Lake Rotorua Brunswick stage 4 and 6
Map 24	Lake Rotorua Hamurana
Map 25	Mourea
Map 26	Okawa Bay
Map 27	Lake Rotoiti Ōkere Falls/Otaramarae
Map 28	Lake Ōkāreka/Blue Lake
Map 29	Paradise Valley

Confirmed Reticulation Zones

Map 30	Matatā
--------	--------

Future Reticulation Zones

Map 31	Tumoana
Map 32	Lake Rotoiti Gisborne Point
Map 33	Lake Rotomā
Map 34	Rotoehu
Map 35	Lake Tarawera
Map 36	Clayton Road/Mountain Road
Map 37	Ngongotahā Road
Map 38	Mamaku



Lake Rotorua Rotokawa

Operating Reticulation Zone
On-site Effluent Treatment Regional Plan



Map 20

Plan Number
GIS-464828





Lake Rotorua

Ngunguru Point

Waikawau/Hannahs Bay

Waingaehe/Holdens Bay

Hinemoa Point

Holdens Bay

IRI IRIKAPUA PARADE

UMUKARIA ROAD

HOLDEN AVENUE

HINEMOA POINT ROAD

GALVIN ROAD

POHUTUKAWA AVE
ASPEN PLACE
SEQUOIA CRESCENT

OMHATA ROAD

GALVIN ROAD

TERORO TERANGI ROAD

SUNRISE AVE
REWAREWA ST

TENGAE ROAD



REFERENCE

— Parcels

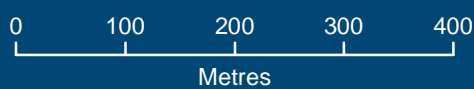
Status

 Future Reticulation Zone

 Operating Reticulation Zone

 Confirmed

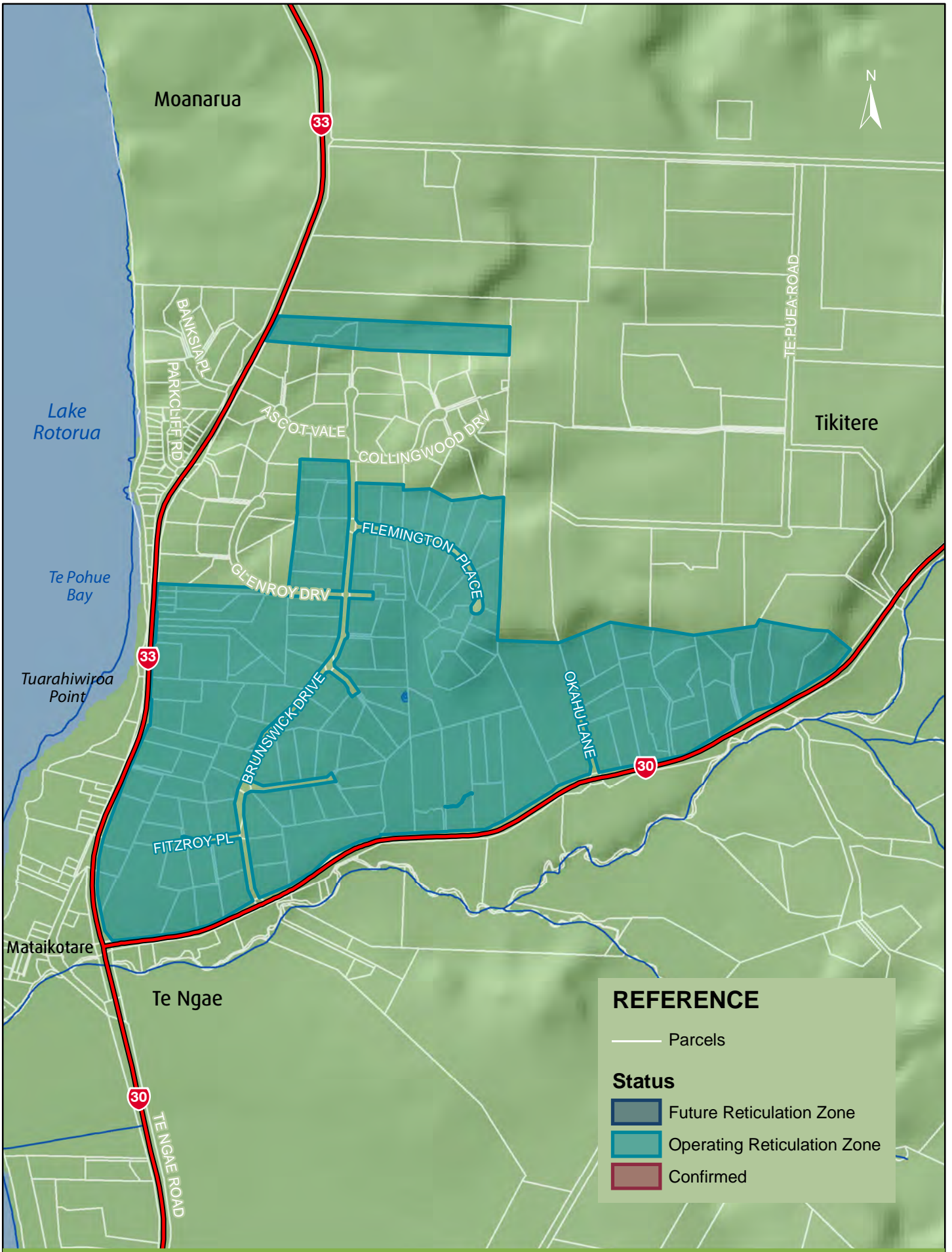
Lake Rotorua Hinemoa Point
Operating Reticulation Zone
On-site Effluent Treatment Regional Plan



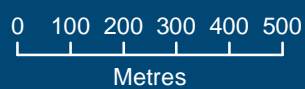
Map 21

Plan Number
GIS-464828





Lake Rotorua Brunswick
Operating Reticulation Zone
On-site Effluent Treatment Regional Plan



Map 22

Plan Number
 GIS-464828







Lake Rotorua Hamurana
Operating Reticulation Zone
On-site Effluent Treatment Regional Plan



Map 24




Plan Number
 GIS-464828

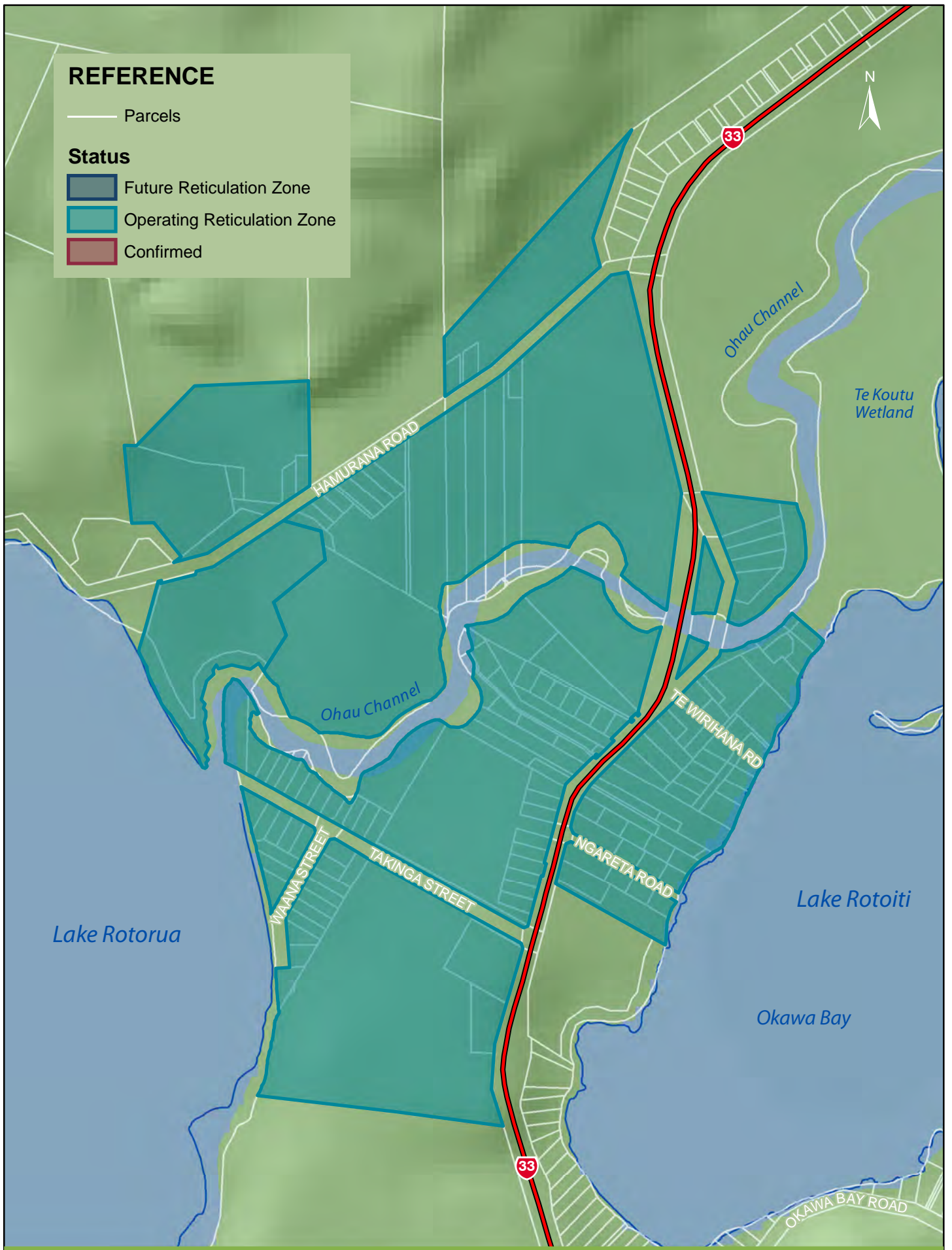


REFERENCE

— Parcels

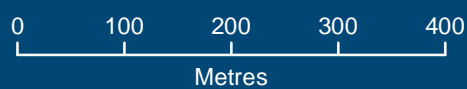
Status

-  Future Reticulation Zone
-  Operating Reticulation Zone
-  Confirmed



Mourea

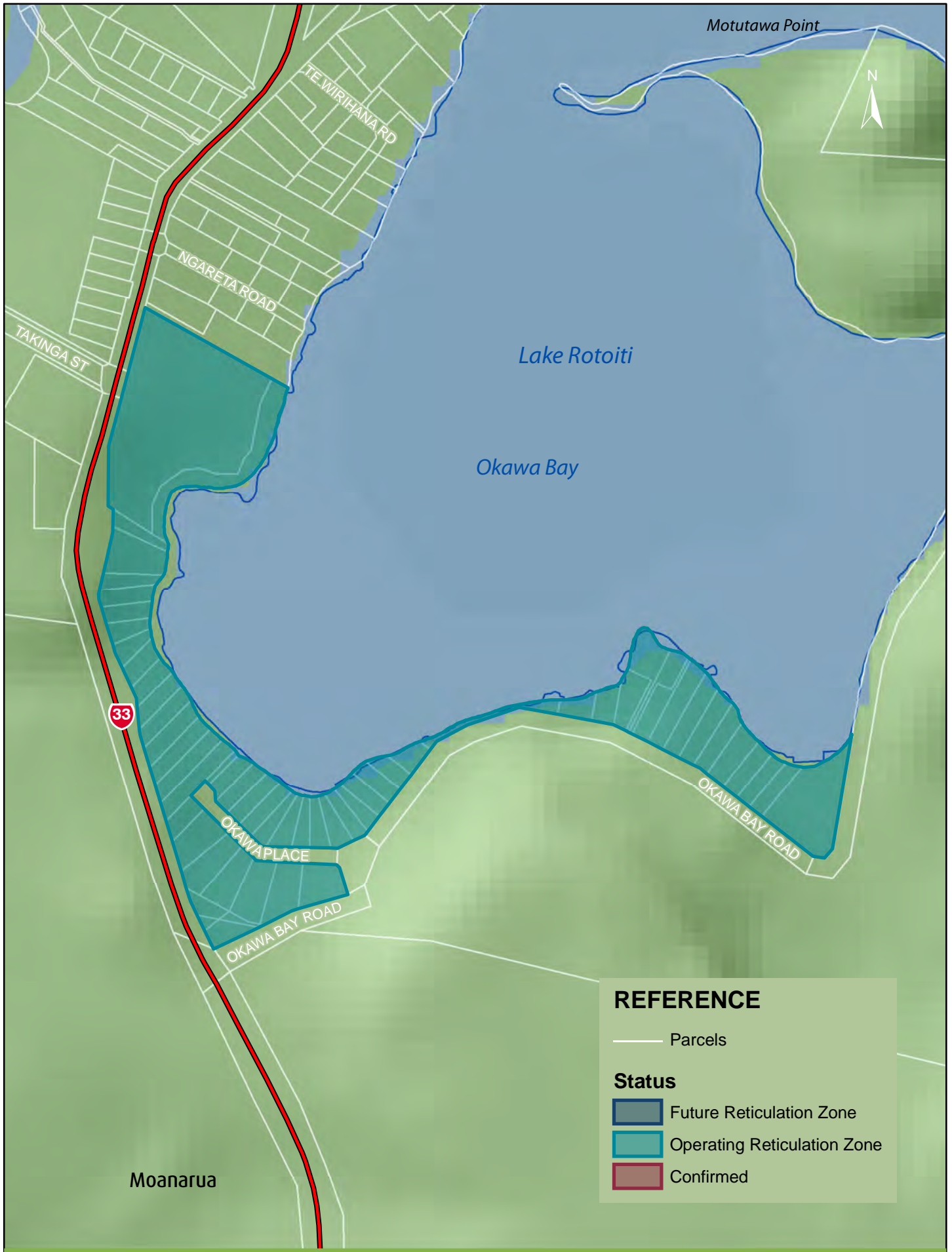
Operating Reticulation Zone
On-site Effluent Treatment Regional Plan



Map 25

Plan Number
GIS-464828





Okawa Bay

Operating Reticulation Zone
On-site Effluent Treatment Regional Plan



Map 26

Plan Number
GIS-464828





REFERENCE

— Parcels

Status

- Future Reticulation Zone
- Operating Reticulation Zone
- Confirmed

Lake Rotoiti Okere Falls/Otaramarae

Operating Reticulation Zone
On-site Effluent Treatment Regional Plan



Map 27




Plan Number
GIS-464828

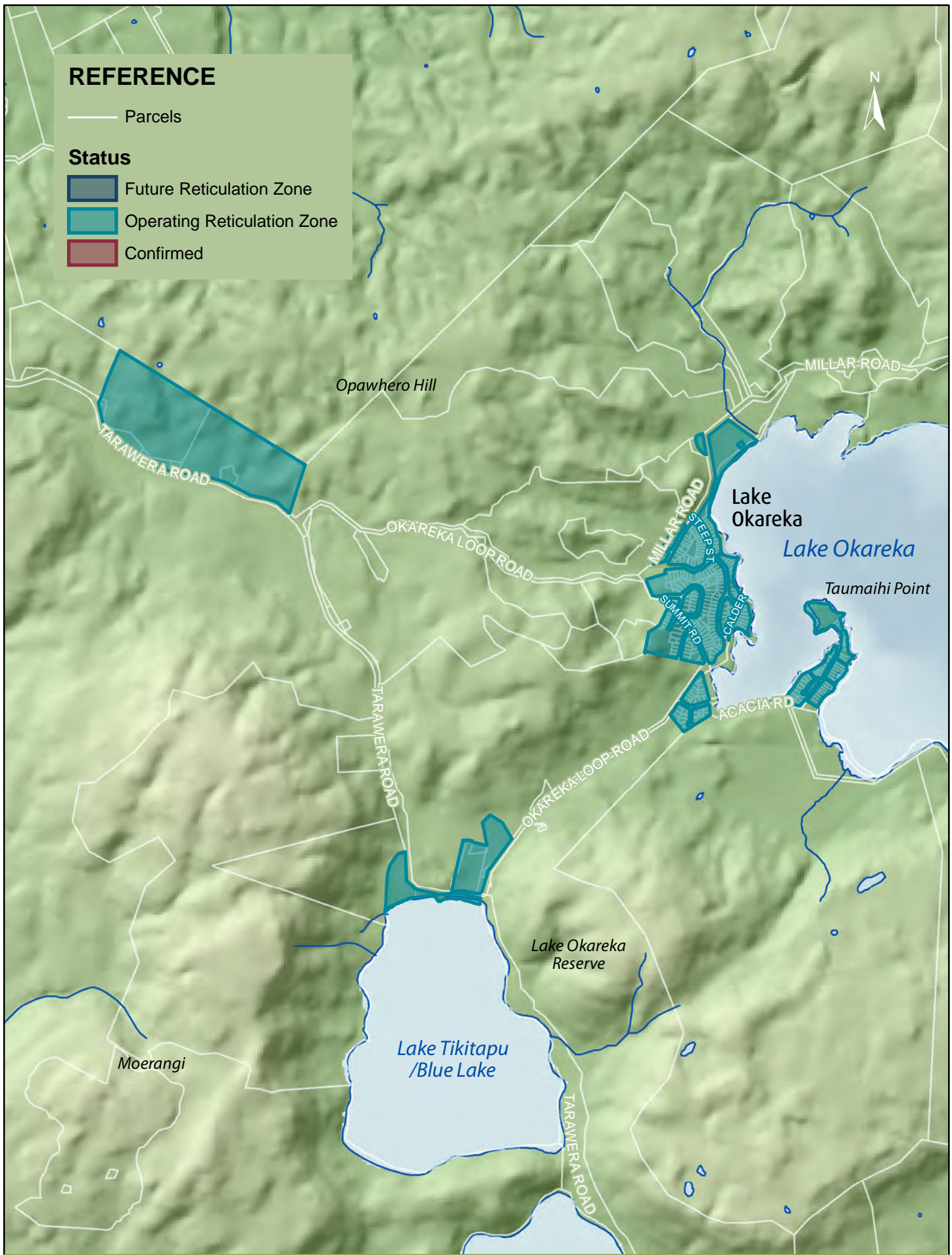


REFERENCE

— Parcels

Status

-  Future Reticulation Zone
-  Operating Reticulation Zone
-  Confirmed



Lake Okareka/Blue Lake

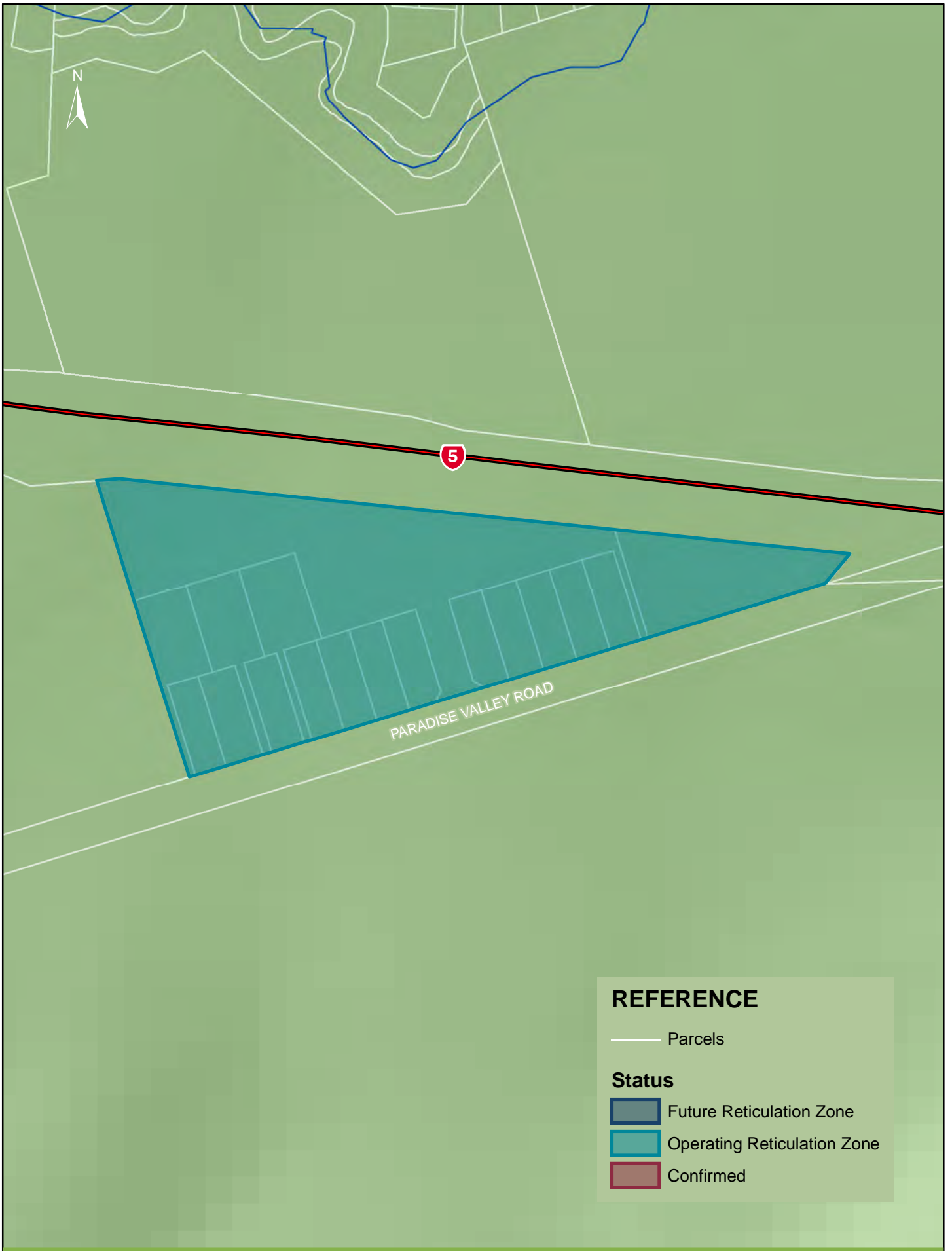
Operating Reticulation Zone
On-site Effluent Treatment Regional Plan



Map 28

Plan Number
GIS-464828





Paradise Valley

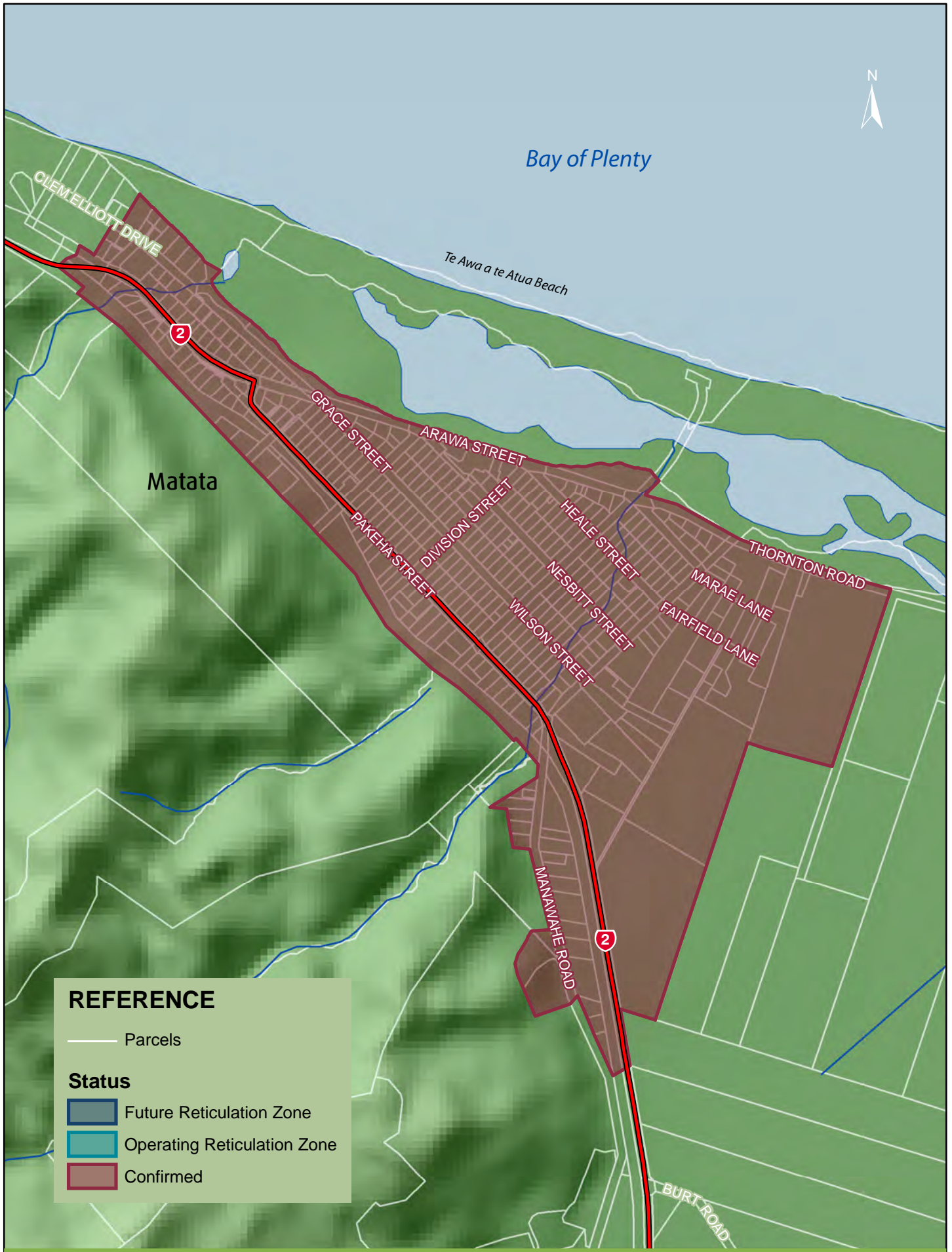
Operating Reticulation Zone
On-site Effluent Treatment Regional Plan



Map 29

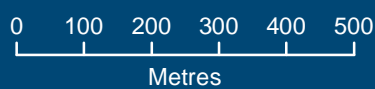
Plan Number
GIS-464828





Matata

Confirmed Reticulation Zone
On-site Effluent Treatment Regional Plan



Map 30

Plan Number
GIS-464828





Lake Rotoiti

TUMOANA ROAD

REFERENCE

— Parcels

Status

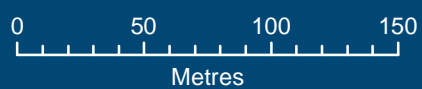
 Future Reticulation Zone

 Operating Reticulation Zone

 Confirmed

Tumoana

Future Reticulation Zone
On-site Effluent Treatment Regional Plan



Map 31

Plan Number
GIS-464828





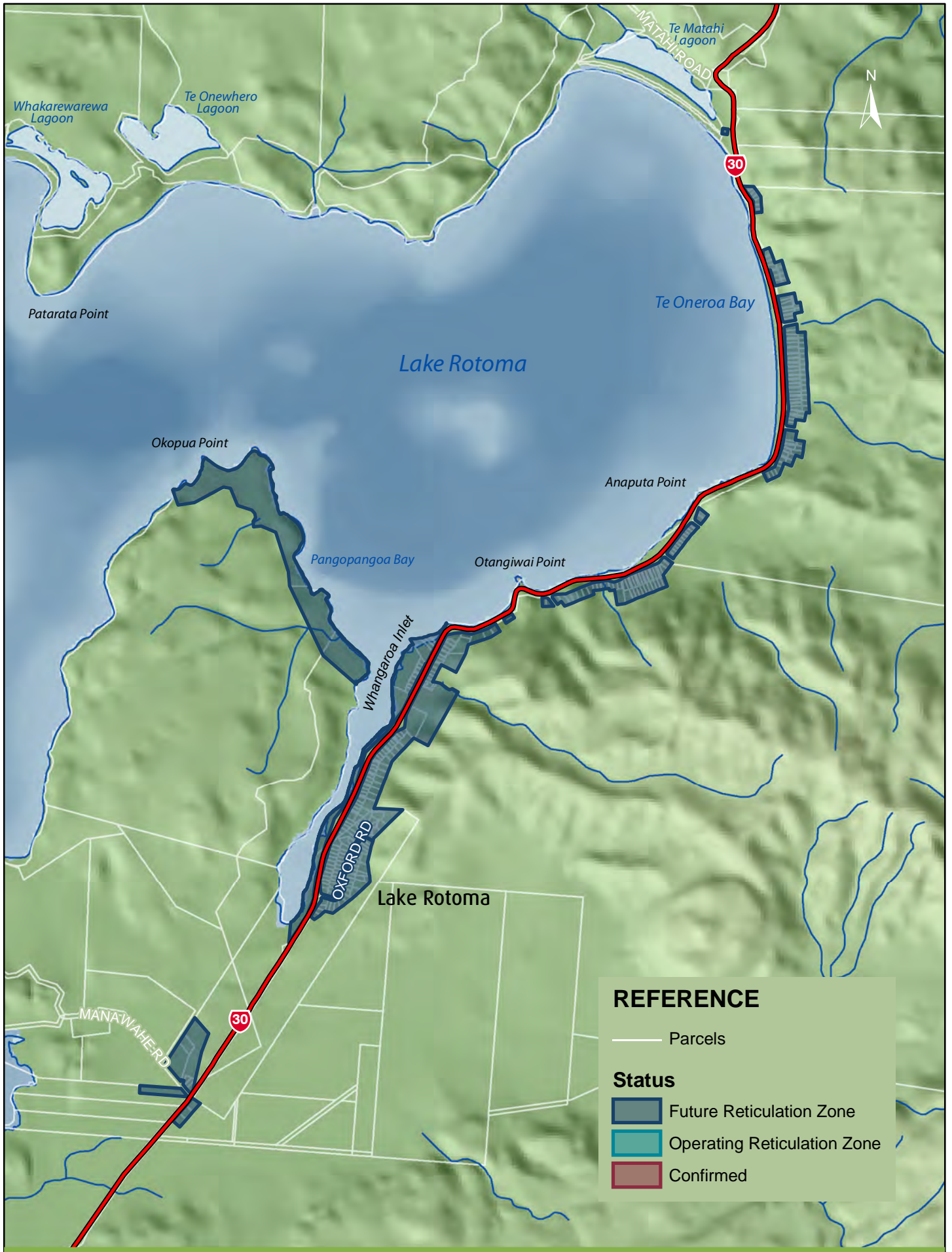
Lake Rotoiti Gisborne Point
Future Reticulation Zone
On-site Effluent Treatment Regional Plan



Map 32

Plan Number
GIS-464828





Lake Rotoma

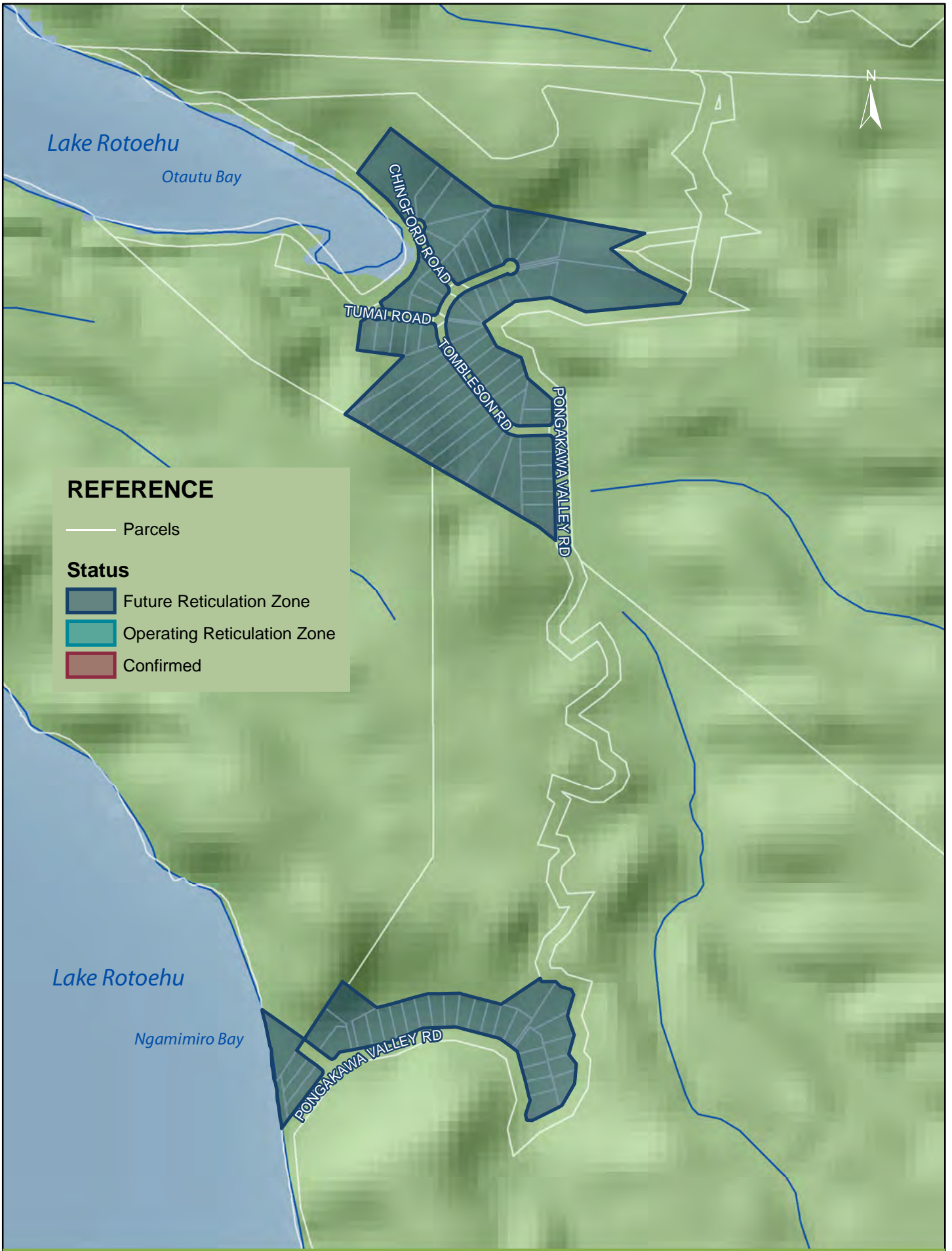
Future Reticulation Zone
On-site Effluent Treatment Regional Plan



Map 33

Plan Number
GIS-464828





REFERENCE

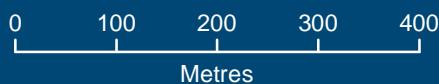
— Parcels

Status

- Future Reticulation Zone
- Operating Reticulation Zone
- Confirmed

Rotoehu

Future Reticulation Zone
On-site Effluent Treatment Regional Plan



Map 34

Plan Number
GIS-464828





Lake Tarawera

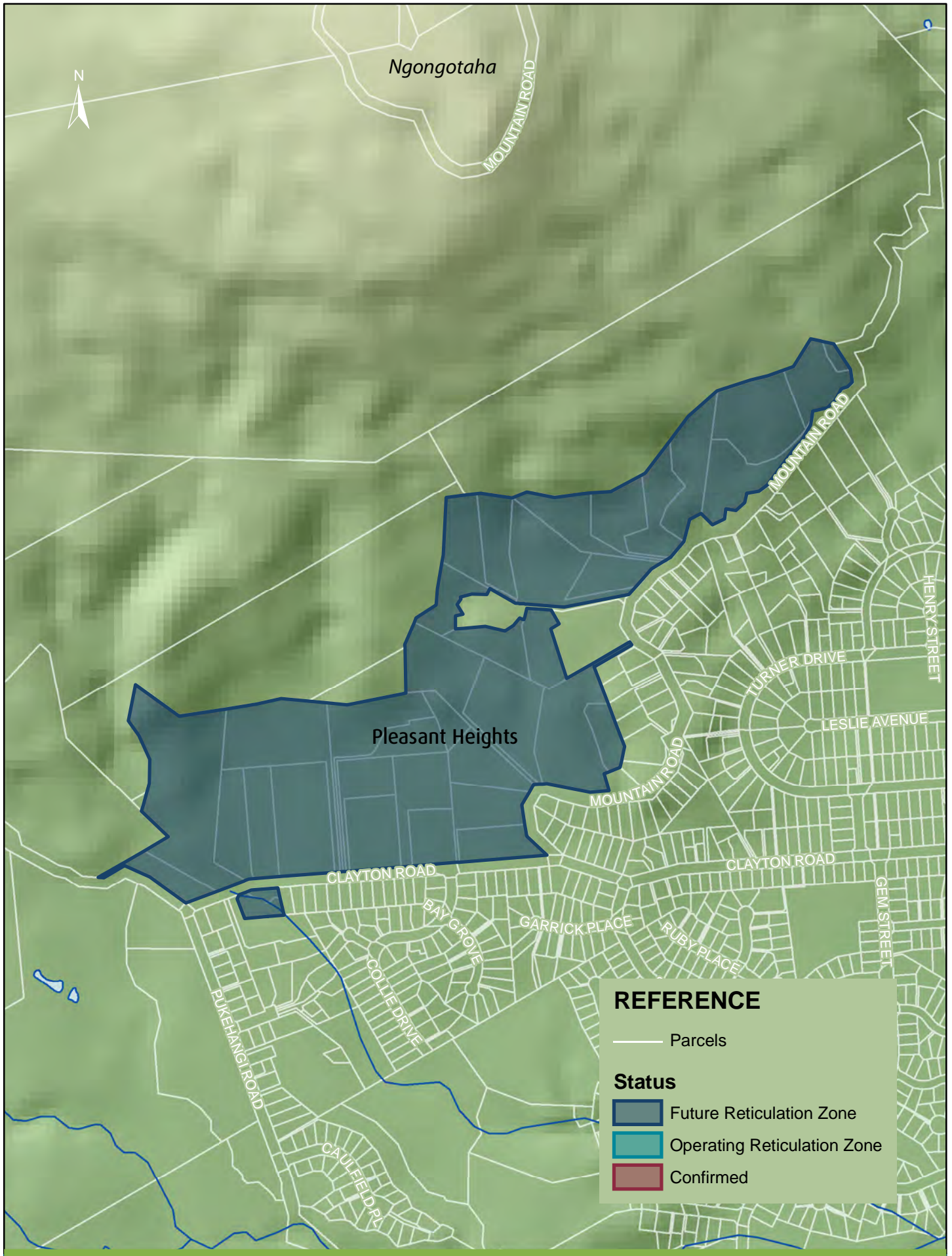
Future Reticulation Zone
On-site Effluent Treatment Regional Plan



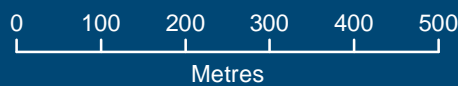
Map 35

Plan Number
GIS-464828





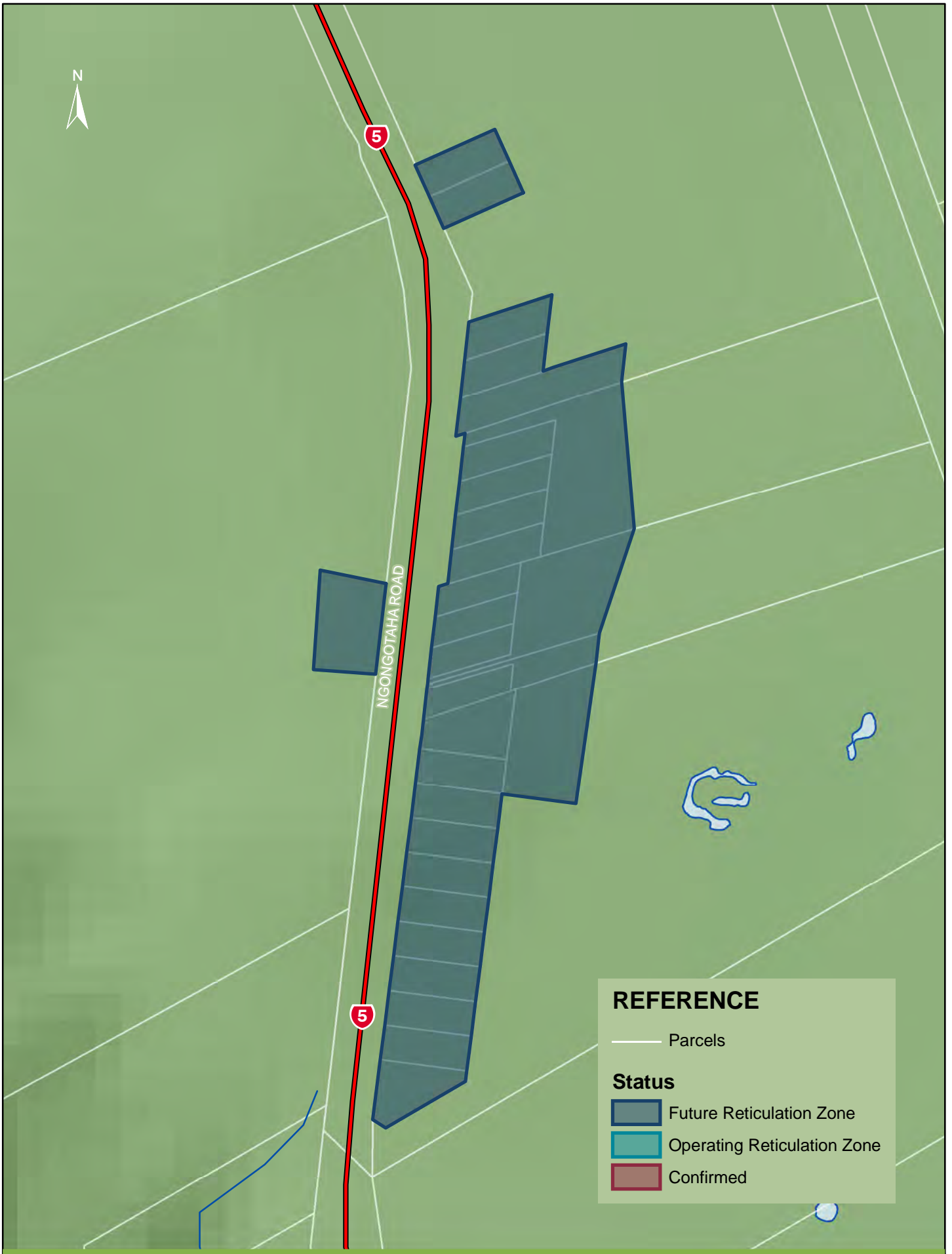
Clayton Road/Mountain Road
 Future Reticulation Zone
 On-site Effluent Treatment Regional Plan



Map 36

Plan Number
 GIS-464828





Ngongotaha Road

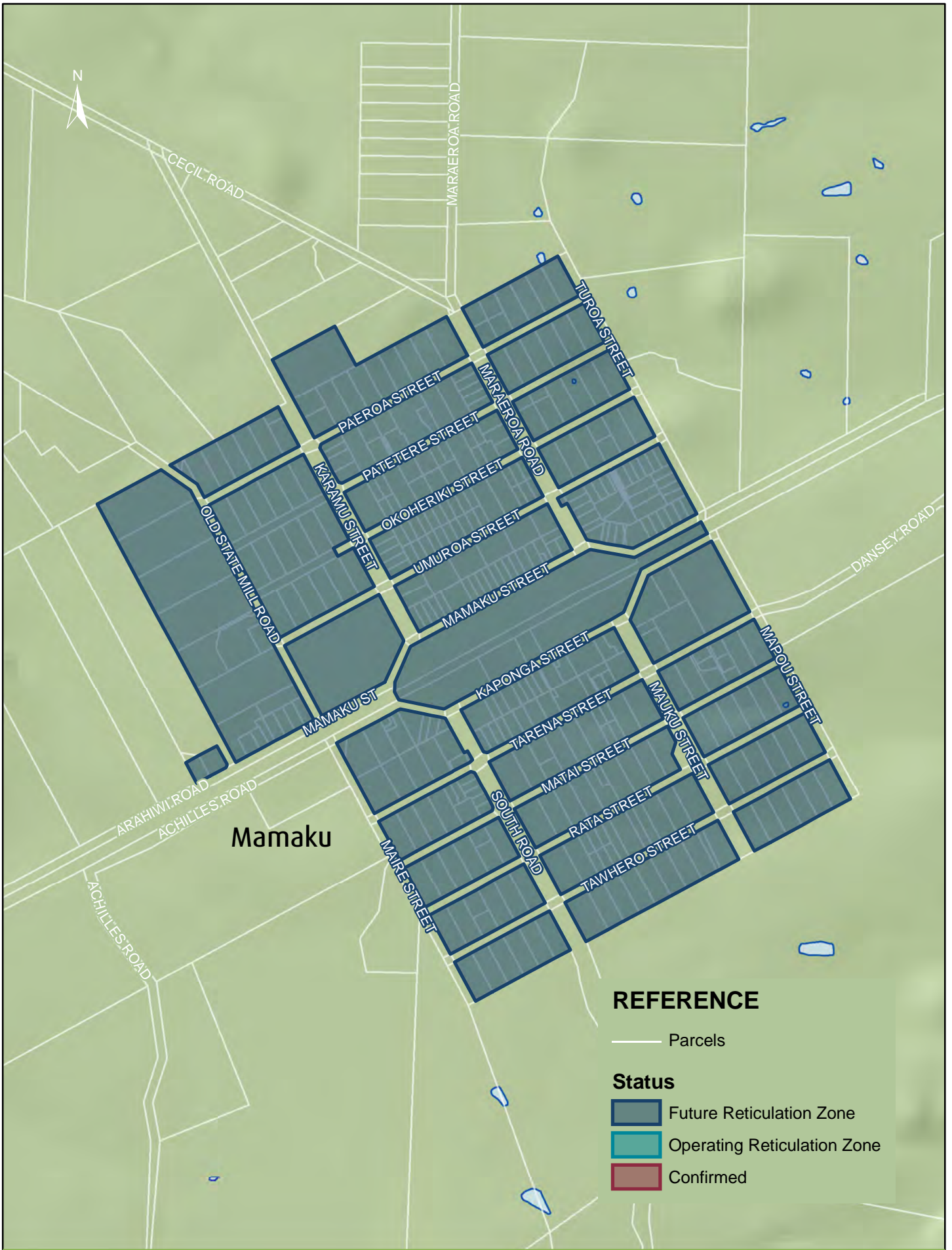
Future Reticulation Zone
On-site Effluent Treatment Regional Plan



Map 37

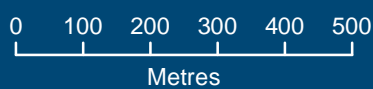
Plan Number
GIS-464828





Mamaku

Future Reticulation Zone
On-site Effluent Treatment Regional Plan



Map 38

Plan Number
GIS-464828

