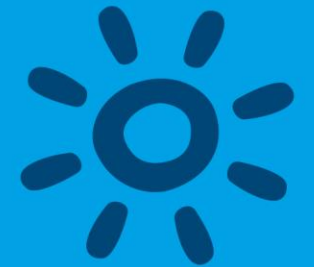
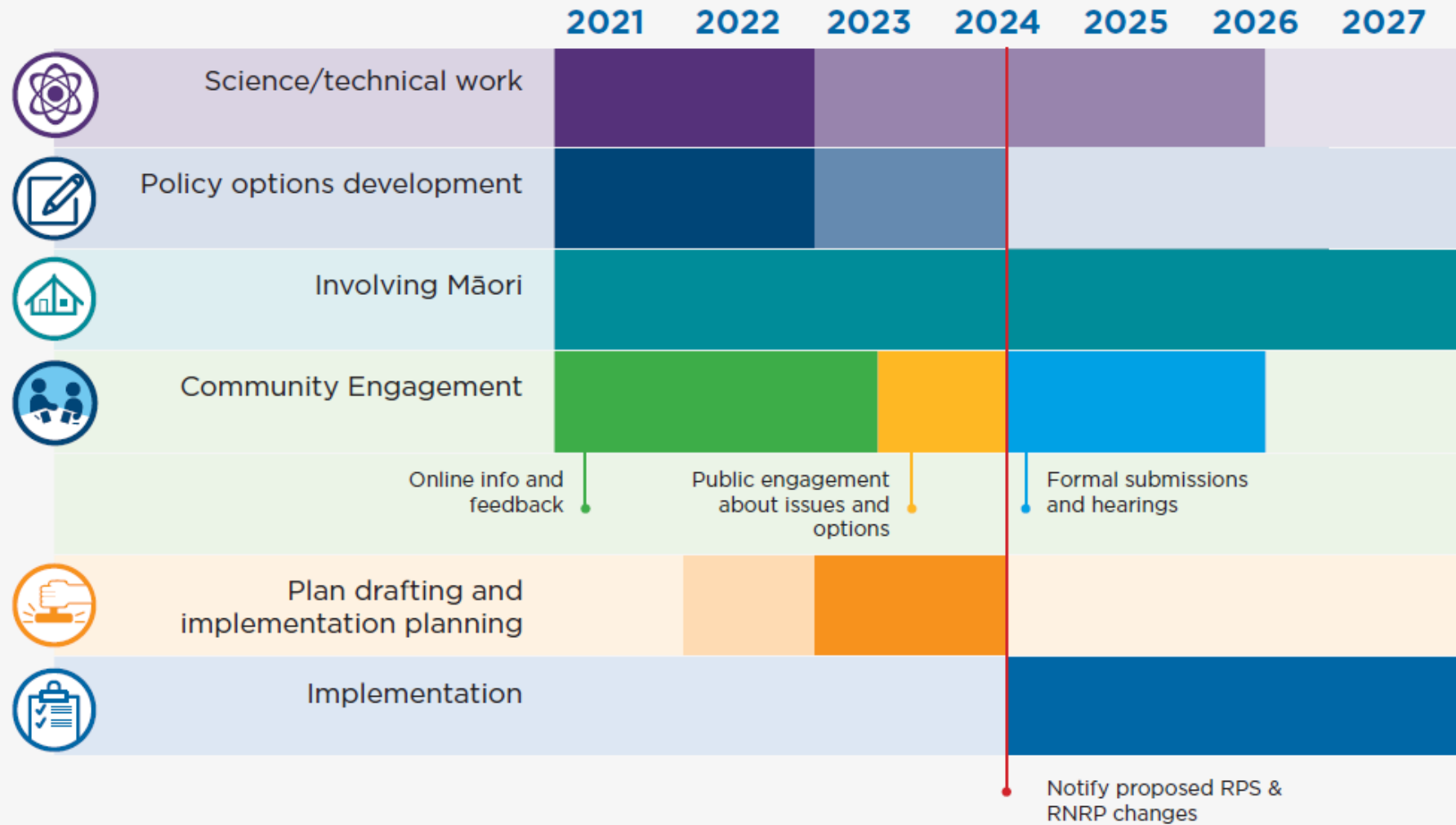


Essential Freshwater Policy Programme

Draft FMUs for discussion
26 March 2021

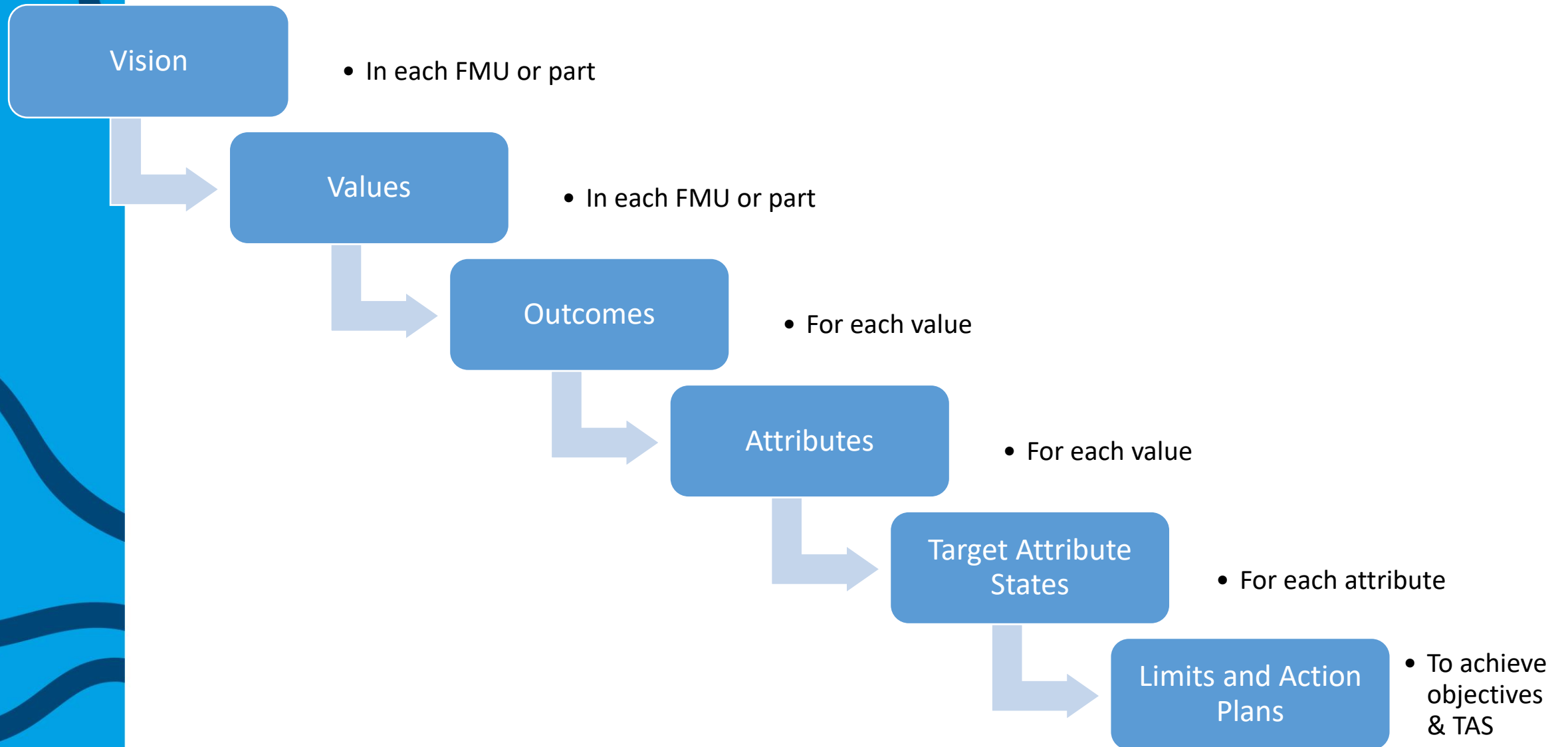


Regional Council's Essential Freshwater Policy Programme Timeline



Notes: Dark coloured blocks show when the bulk of work occurs. Light coloured blocks show activity continuing.
 RPS = Regional Policy Statement & RNRP = Regional Natural Resources Plan

National Objectives Framework





What are FMUs?

Freshwater management unit, or FMU, means all or any part of a water body or water bodies, and their related catchments, that a regional council determines ... is an appropriate unit for freshwater management and accounting purposes; and **part of an FMU** means any part of an FMU including, but not limited to, a specific site, river reach, water body, or part of a water body



How FMUs are used

Every FMU

- will have a vision, stated as a objective, in the Regional Policy Statement
- will form a chapter in the RNRP

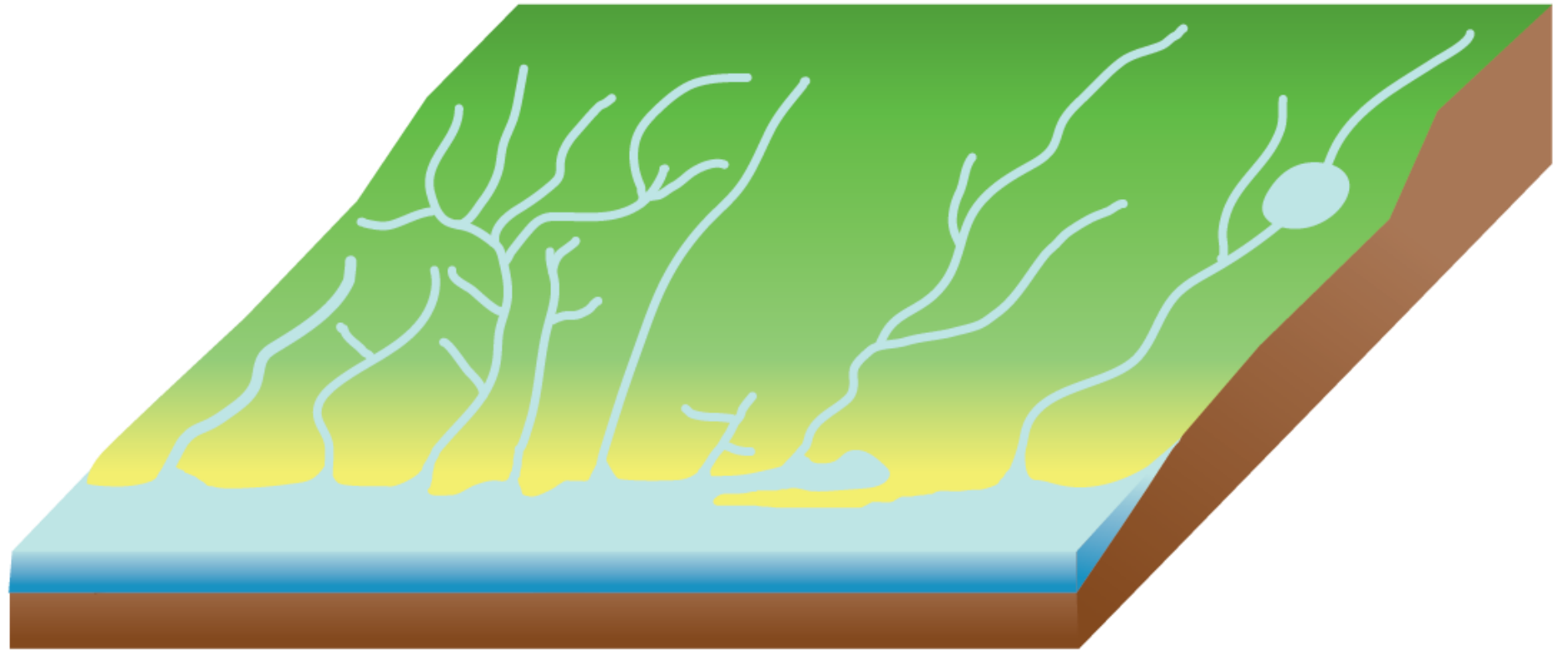
The **National Objectives Framework** is delivered at an FMU, or part of an FMU scale



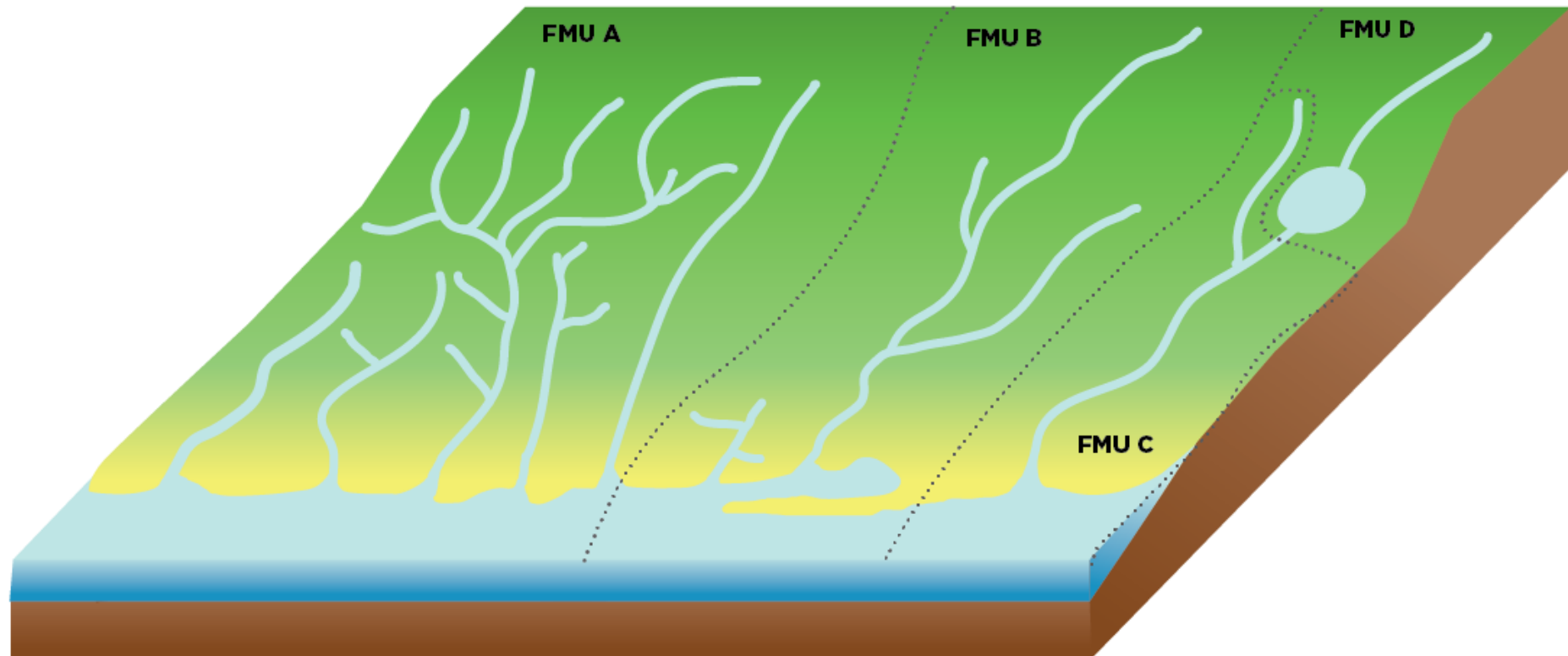
Principles

1. FMUs should **relate primarily to catchment boundaries** of freshwater bodies.
2. FMUs should **reflect co-governance body** catchment boundaries of
3. **Within an FMU, there may be more than one whole catchment**, where they have characteristics in common.
4. The number of FMUs should **achieve a balance** between RNRP/administrative simplicity and bespoke solutions.
5. FMUs should **generally be set at the largest scale** that may have a common objective and /or management approach.
6. **Other spatial units can also be applied**, such as part of an FMU, overlays, and specific controls

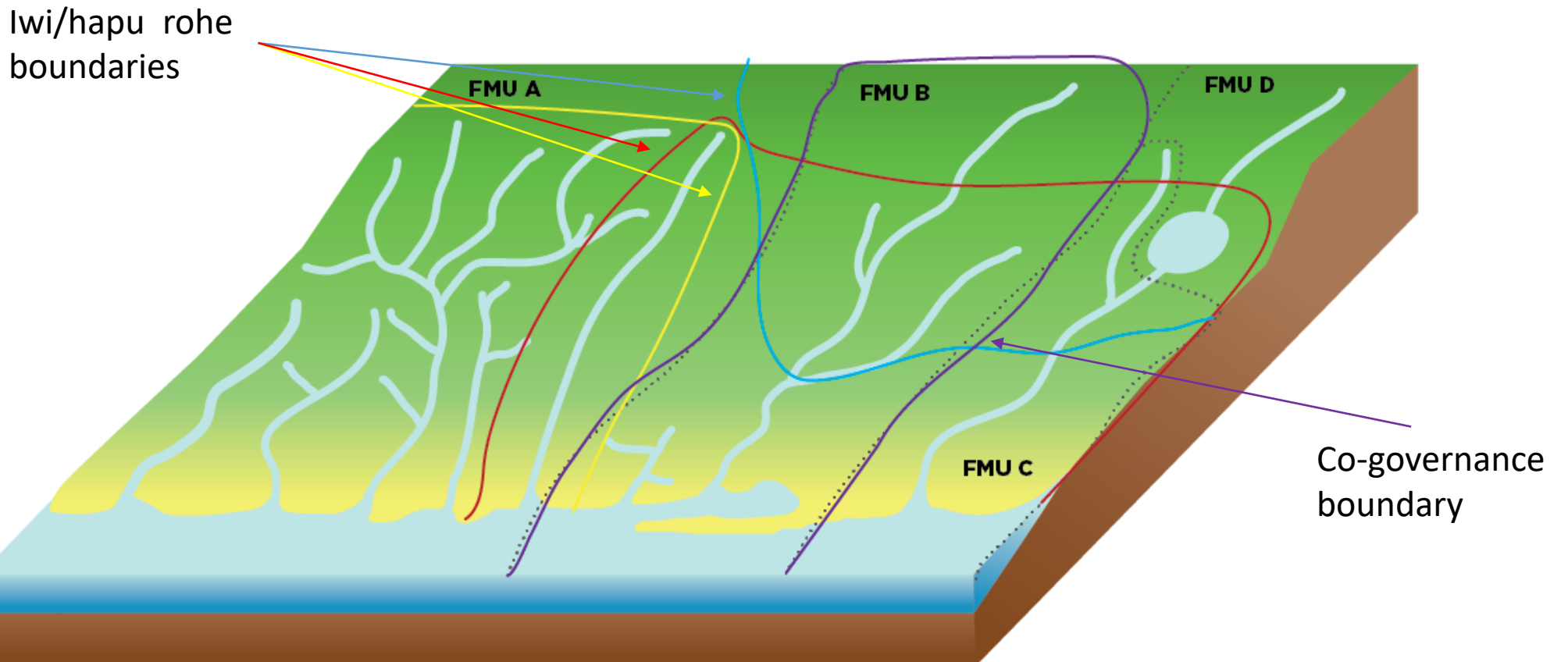
FMU setting - principles



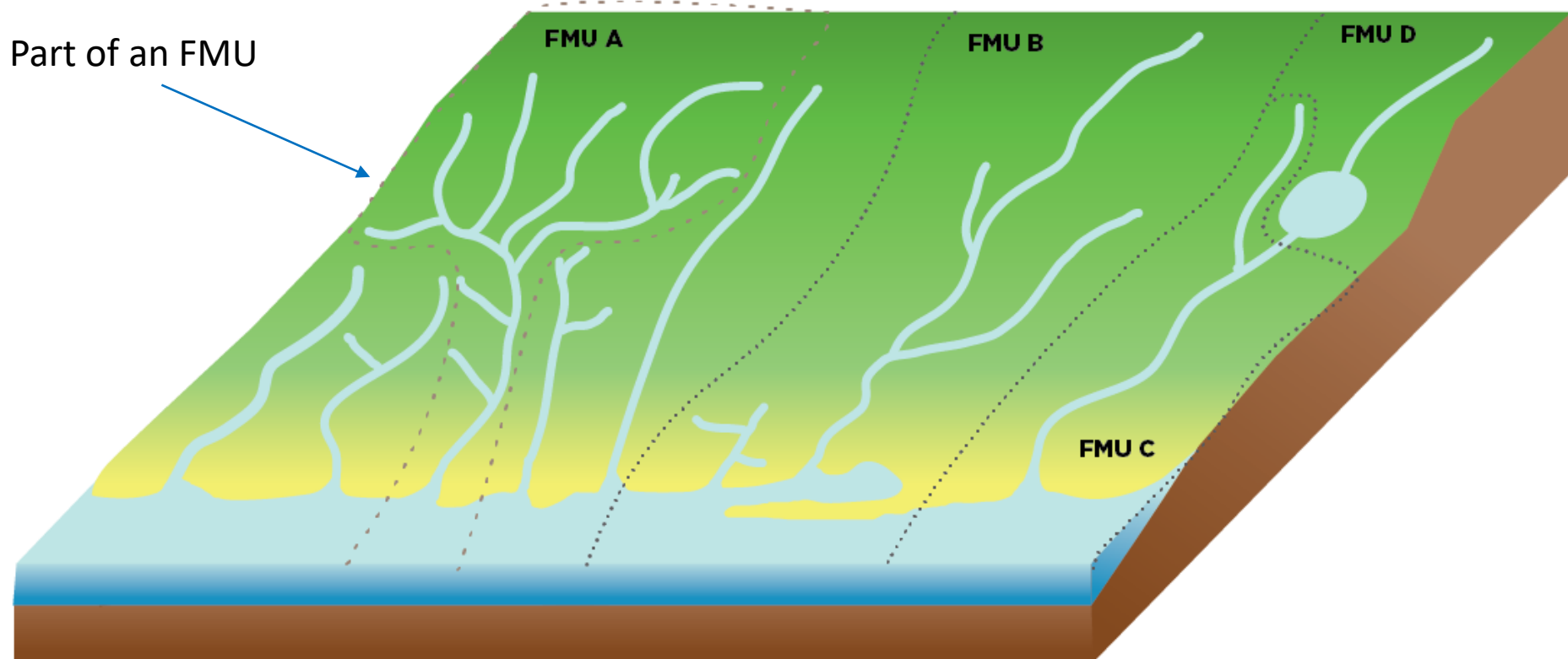
1. FMUs should **relate primarily to catchment boundaries** of sensitive receiving environments and freshwater bodies.
3. **Within an FMU, there may be more than one whole catchment**, where they have characteristics in common.
4. The number of FMUs should **achieve a balance** between administrative simplicity and bespoke solutions.



1. FMUs should **relate primarily to catchment boundaries** of freshwater bodies.
2. FMUs should **reflect co-governance body** catchment boundaries of

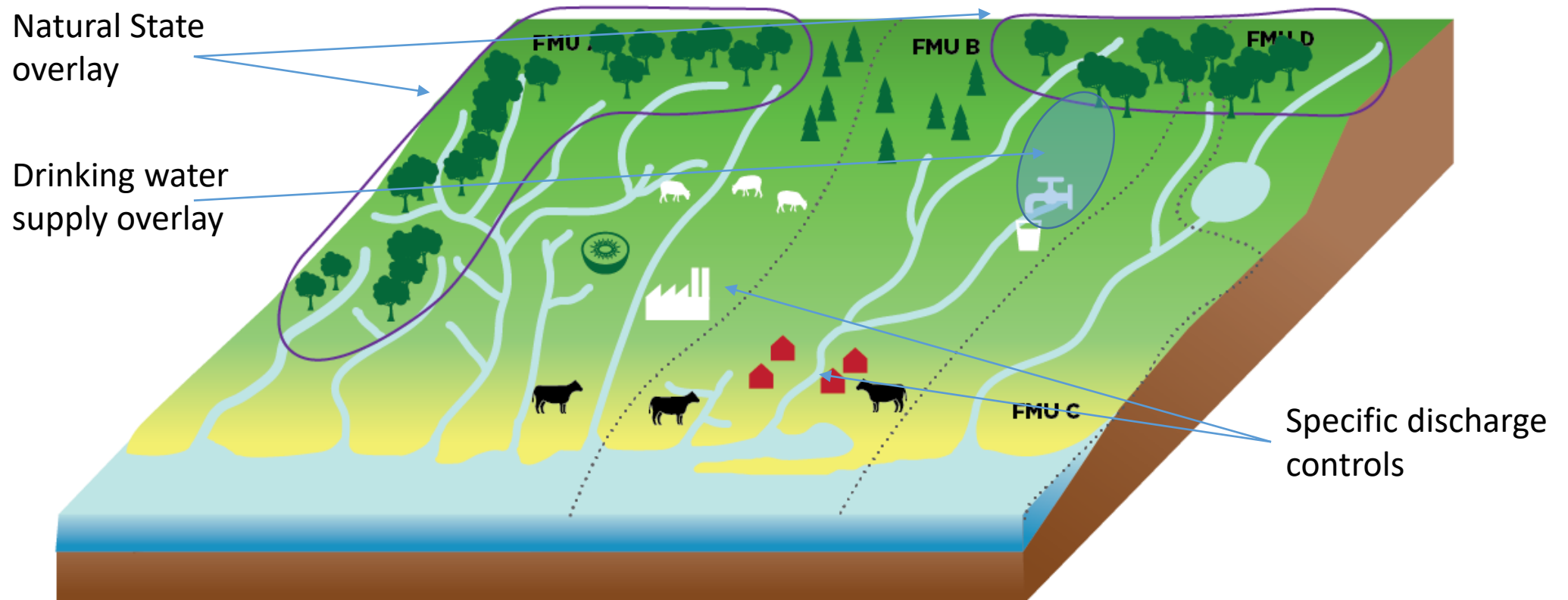


5. FMUs should **generally be set at the largest scale** that may have a common objective and /or management approach.
6. **Other spatial units can also be applied**, such as **part of an FMU**, overlays, and specific controls

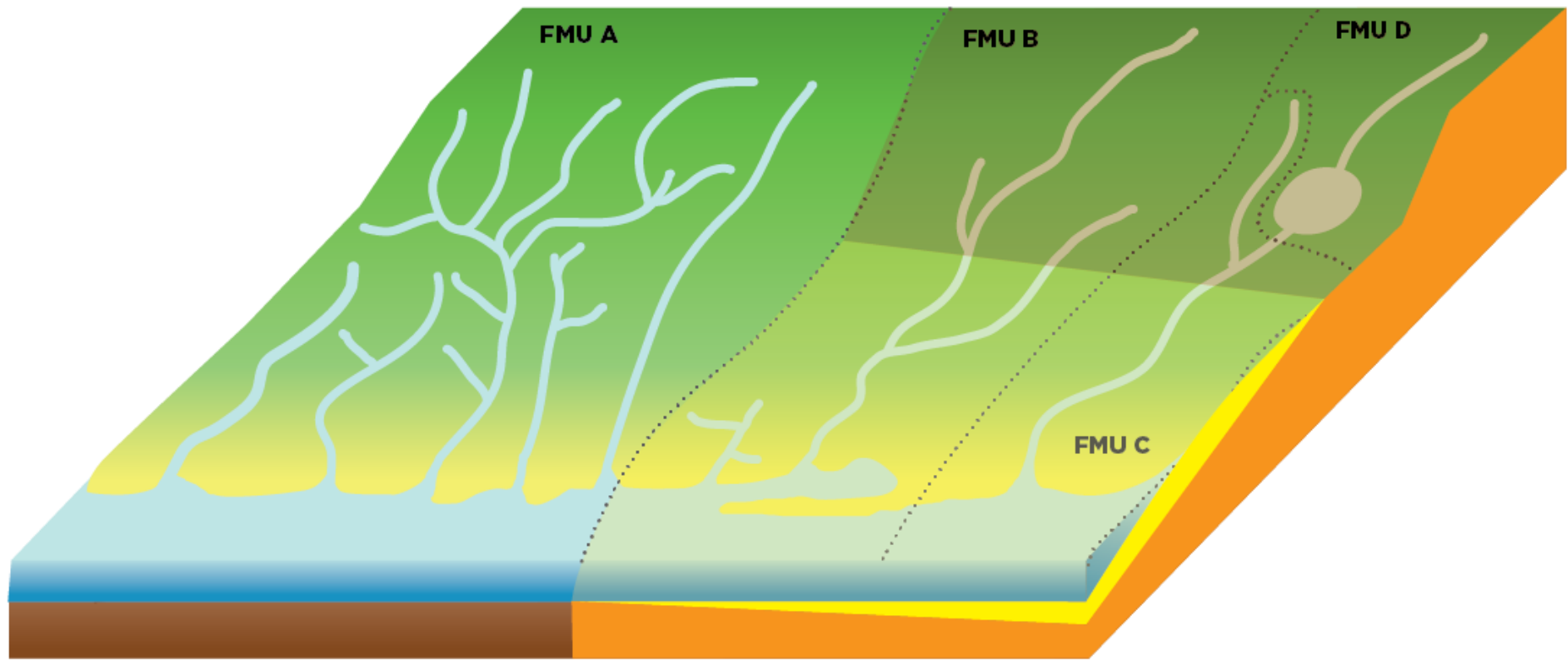


5. FMUs should **generally be set at the largest scale** that may have a common objective and /or management approach.

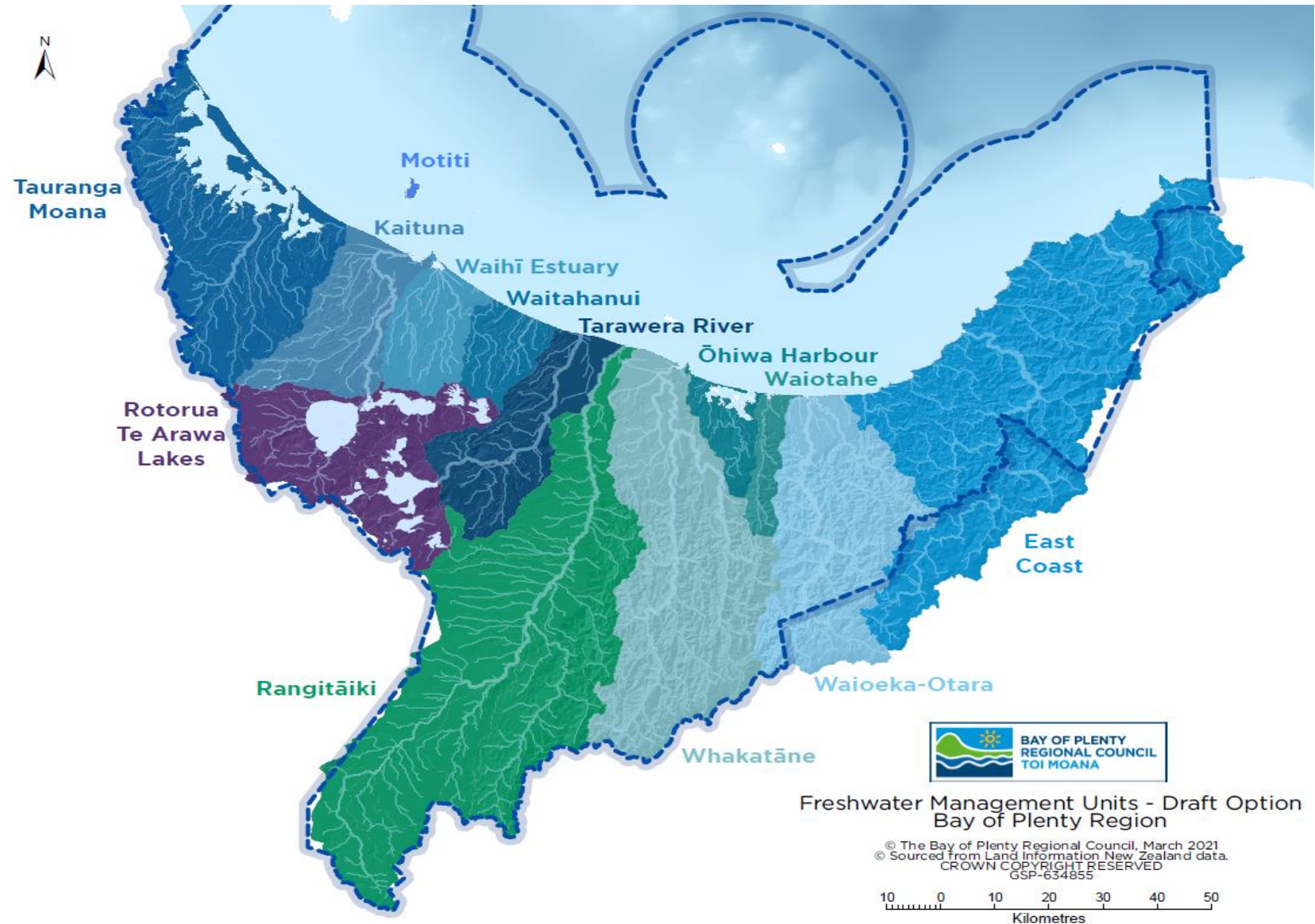
6. Other spatial units can also be applied, such as part of an FMU, **overlays, and specific controls**



Hydrogeological units



Draft FMUs





Keep up to date, stay involved

Follow our Essential Freshwater project page:

<https://www.boprc.govt.nz/our-projects/essential-freshwater>

This year we'll :

- launch surveys about values and vision setting
- present water quality and ecological health information
- explain freshwater management issues.

Sign up for Freshwater Flash:

<https://www.boprc.govt.nz/your-council/news/newsletters>