

Ōhiwa

HARBOUR

Jewel of the eastern Bay of Plenty

Ōhiwa Harbour mangrove management

Ohiwa Harbour Mangroves

■ 1945
■ 2003

Community concerns can be broadly categorised as follows:

That mangroves:

- increase the deposition of mud
- affect recreational activities
- affect shellfish beds and fish breeding
- interfere with natural drainage into and through the harbour
- change the ecological balance of the harbour
- interfere with access to the harbour

2008 Ōhiwa Harbour Strategy

Supported the management of mangroves

2009 Ōhiwa Harbour Sediment and Mangrove Management Plan

Developed an approach dealing with sediment and mangroves simultaneously.

2010 Mangrove cover mapped

Based on 2007 aerial photography.

2011 Resource consent

Granted to Upokorehe to remove mangroves outside a mapped boundary.

2011-12 Mangrove removal began

Community working bees removed about 18ha mangroves from 2011 to 2018.

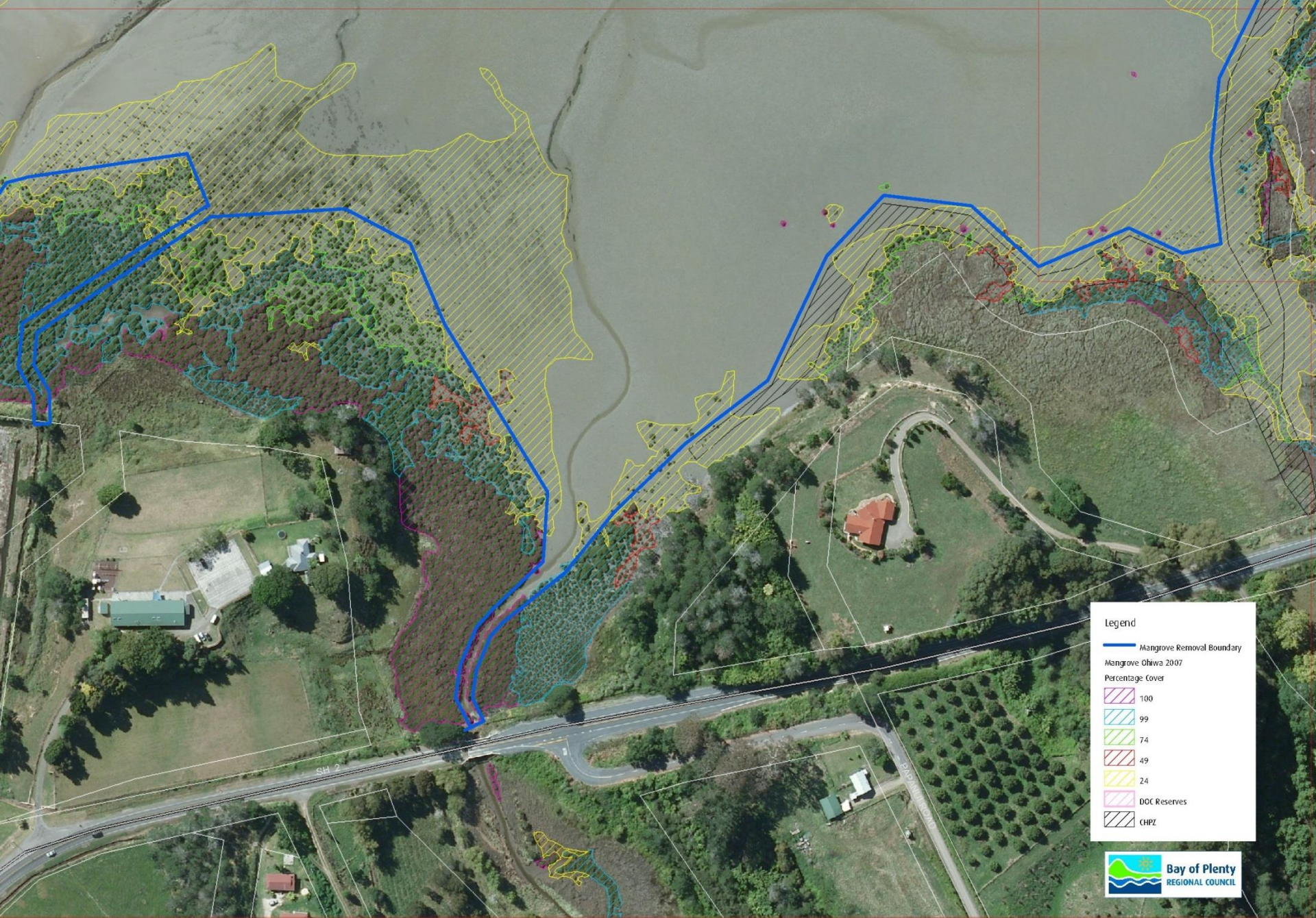
Seedlings / outlying plants removed from the outer fringe of established mangrove “forest”.

2020 Consent expires

First “round” of the harbour completed.

Rules in the new RCEP allow areas previously managed to continue to be managed without a consent.



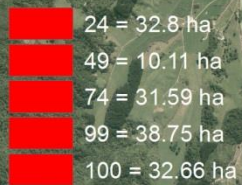


Legend

- Mangrove Removal Boundary
- Mangrove Ohiwa 2007
- Percentage Cover
 - 100
 - 99
 - 74
 - 49
 - 24
- DOC Reserves
- CHPZ

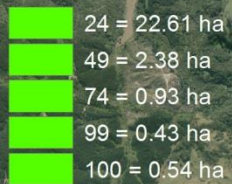
Mangrove area outside of consent

Total Cover = 145.91 ha



Mangrove area allowed to be cleared under consent

Total Cover = 26.90 ha



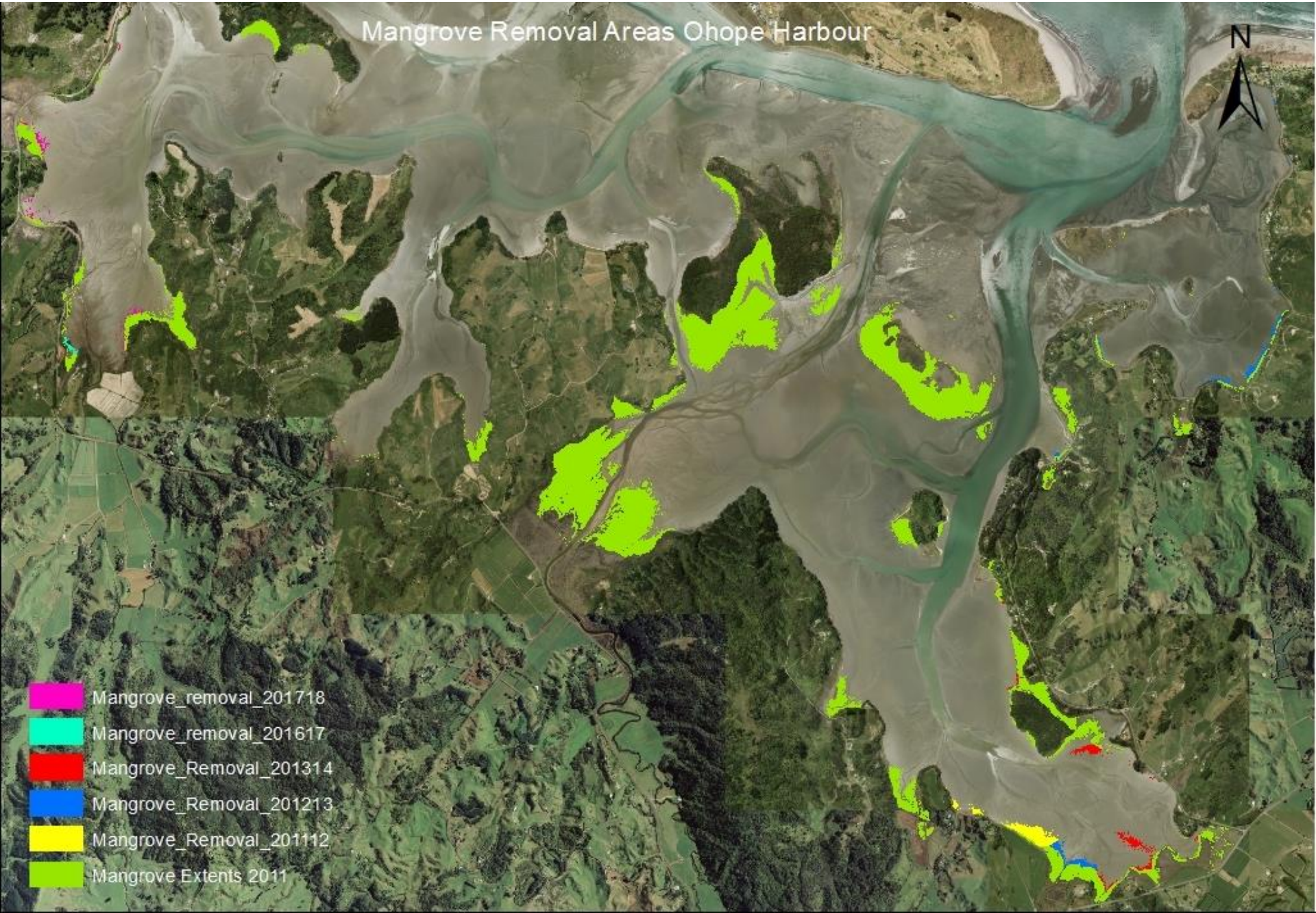




Mangrove Removal Areas Ohope Harbour



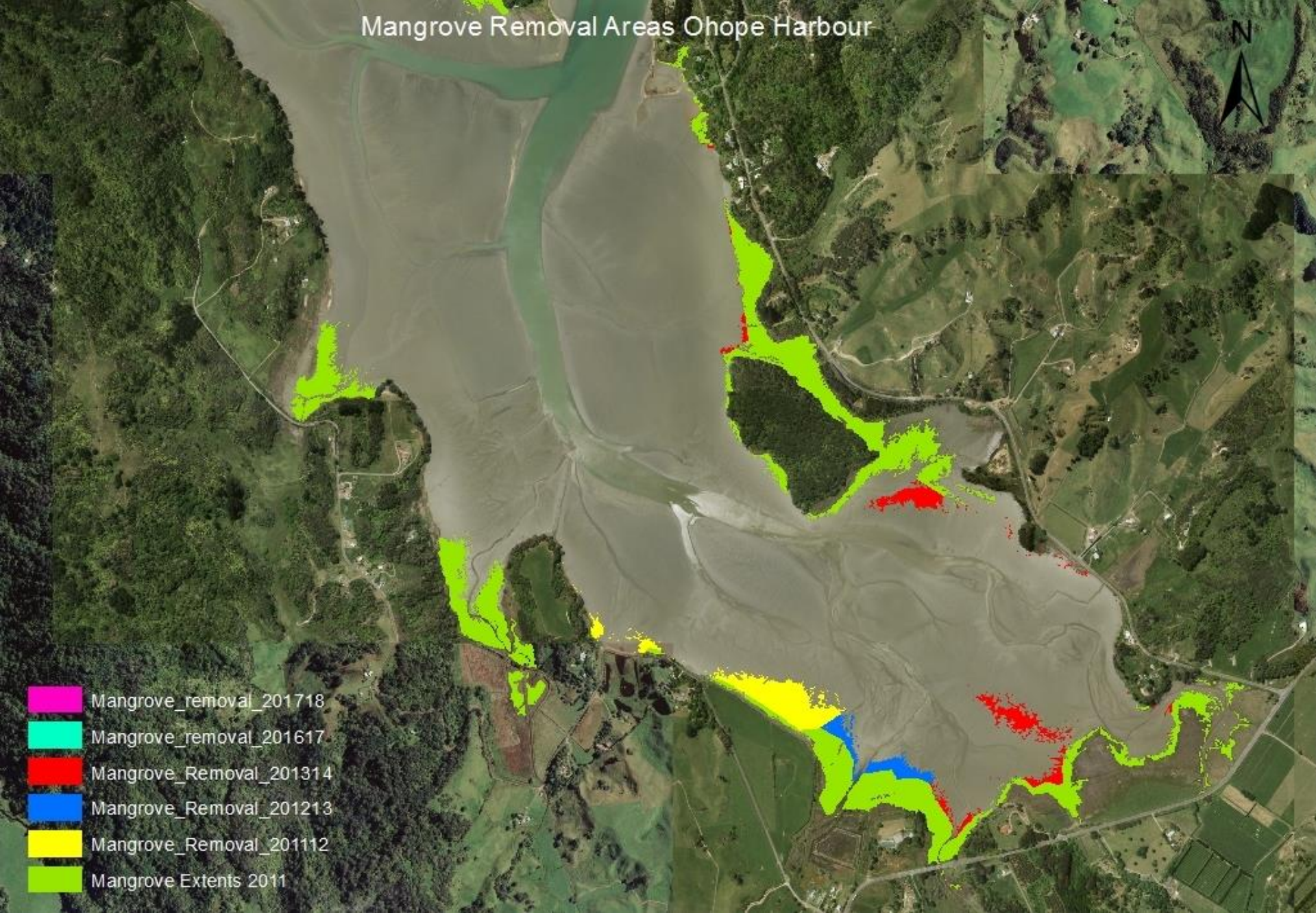
-  Mangrove_removal_201718
-  Mangrove_removal_201617
-  Mangrove_Removal_201314
-  Mangrove_Removal_201213
-  Mangrove_Removal_201112
-  Mangrove Extents 2011



Mangrove Removal Areas Ohope Harbour



-  Mangrove_removal_201718
-  Mangrove_removal_201617
-  Mangrove_Removal_201314
-  Mangrove_Removal_201213
-  Mangrove_Removal_201112
-  Mangrove Extents 2011



Regional Coastal Environment Plan (2019)

Rule DD 22

Permitted – Management of mangroves as part of ongoing maintenance areas where clearance has been lawfully undertaken

The removal of mangroves that is carried out as a part of ongoing maintenance of areas where clearance of mature mangroves has previously been undertaken and authorised by a resource consent, is a permitted activity subject to the following standards and terms:

From 2020

- Mangrove removal will continue in areas previously managed
- The removal boundary will remain the same
- Mangroves along the margin of the shore will be left to protect the shore from erosion, provide an oyster resource, and to provide a corridor for banded rail
- There will be a much more focused effort to reduce the sediment and nutrient flow into the harbour which is the principal driver of mangrove proliferation.