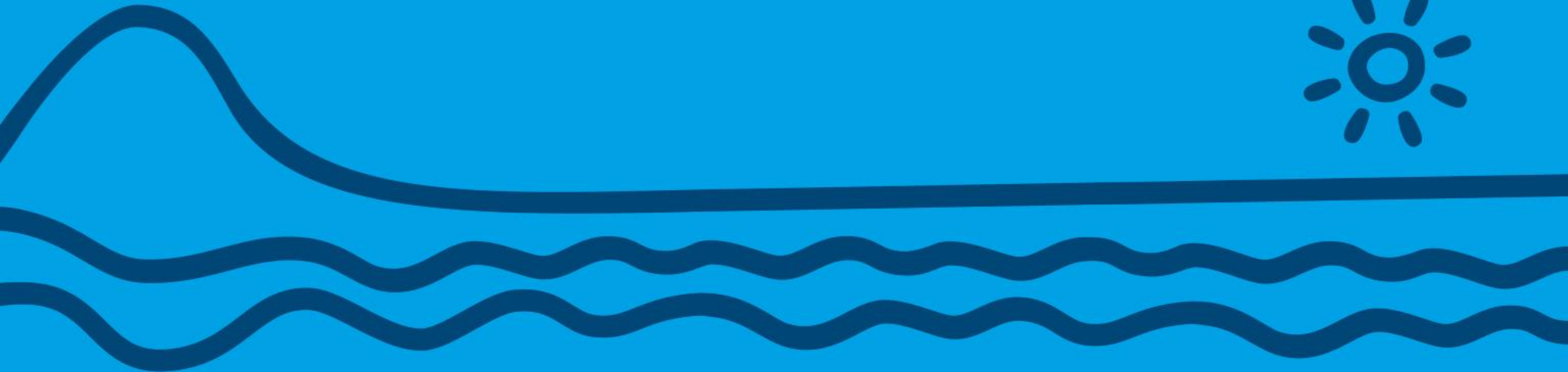




Development of the Regional Land Transport Plan 2021

Regional Transport Committee - 8 May 2020





Background

- The RTC previously resolved to identify the key areas where targeted strategic analysis is required to meet Central Government direction.
- The RTC has now commenced the process for preparing a new RLTP with the current focus on the strategic framework.



Purpose

To provide the Committee with an opportunity to review and provide feedback on:

- The vision statement;
- The current Investment Logic Map (ILM) including the problems, benefits, and their weightings; and
- The objectives

Today, we are seeking your high level observations so staff can take these back for further work



Vision statement

The current RLTP 2018 vision statement is:

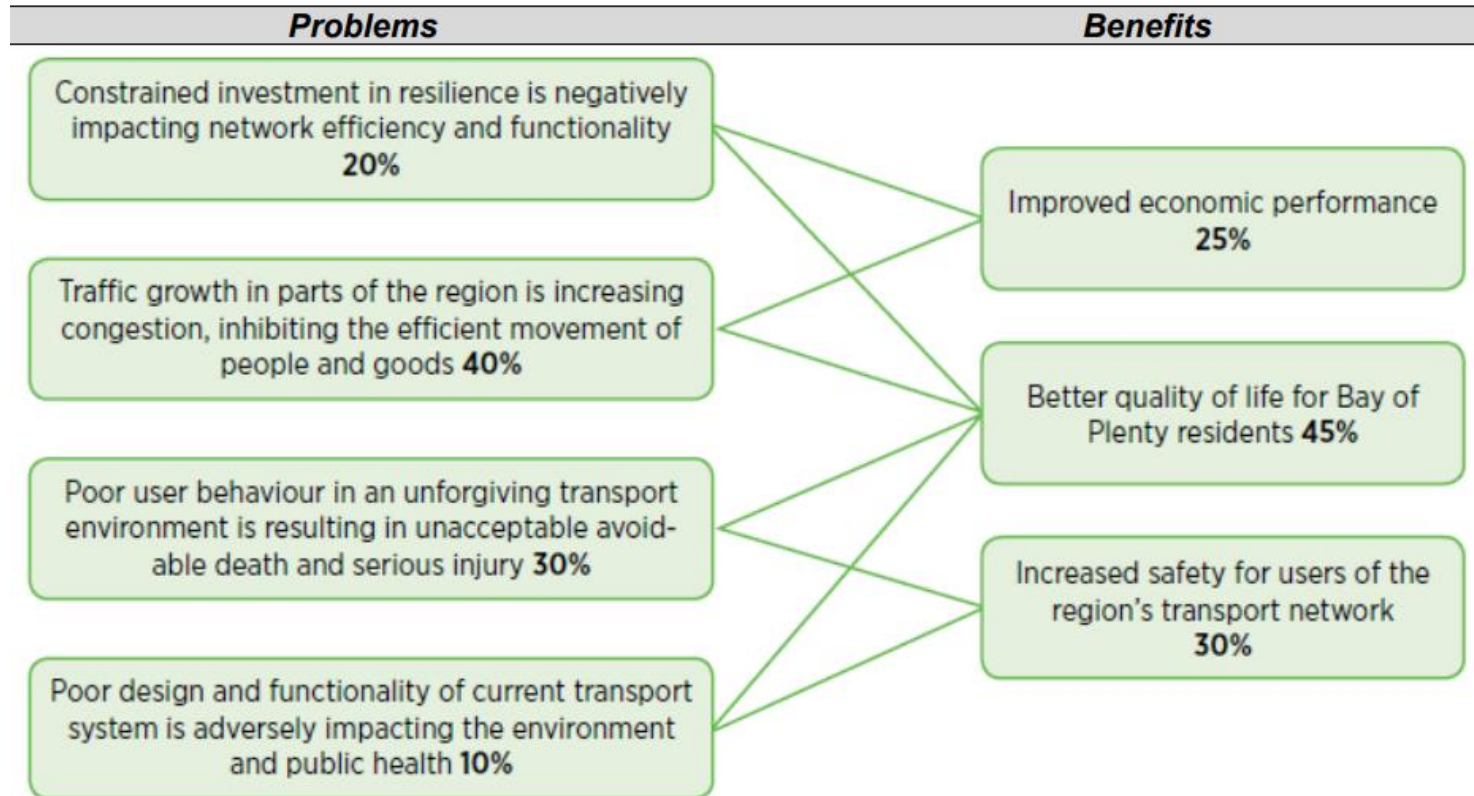
“Best transport systems for a growing economy and a safe, healthy and vibrant Bay lifestyle for all”

Questions for RTC:

- Is the RTC comfortable with the current vision?
- Does the RTC believe there is sufficient emphasis on long-term environmental outcomes, for example, climate change and reducing emissions?
- Are there any other significant factors missing in the current vision statement?



Problems and benefits



Question for RTC:

- Is the RTC comfortable with the problem and benefit statements and their respective weightings?



Objectives

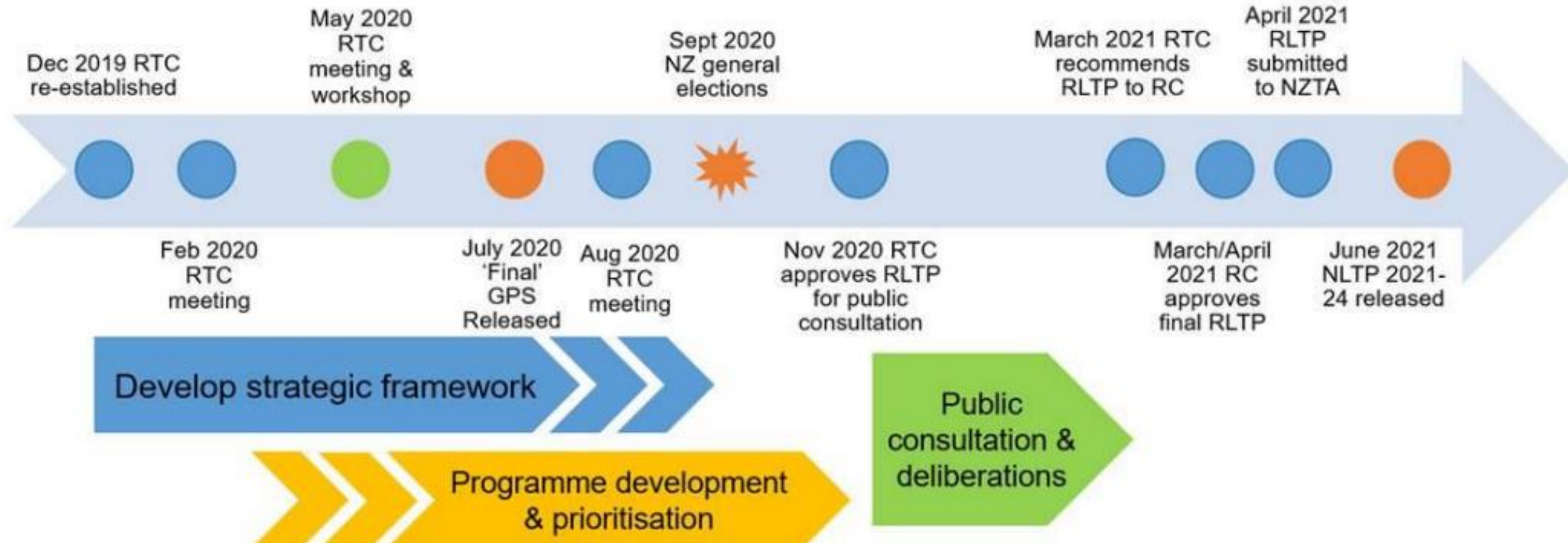
1. Access and resilience (15%) → Split into two?
2. Environmental sustainability (10%) → Increase the prominence of climate change?
3. Land use and transport integration (10%)
4. Energy efficiency (5%)
5. Public health (5%)
6. Safety (30%)
7. Economic efficiency (20%)
8. Affordability (5%) → Move from an objective to a policy?

Question for RTC:

- Is the RTC comfortable with continuing the focus on longer-term (10-30 year) outcomes in the objective statements?
- Does the RTC see any additional changes that have occurred since 2018 that may require amendments to the objectives?



RLTP timeframe





Thank You