

# Regional Land Transport Plan Annual Report Card 2018/19



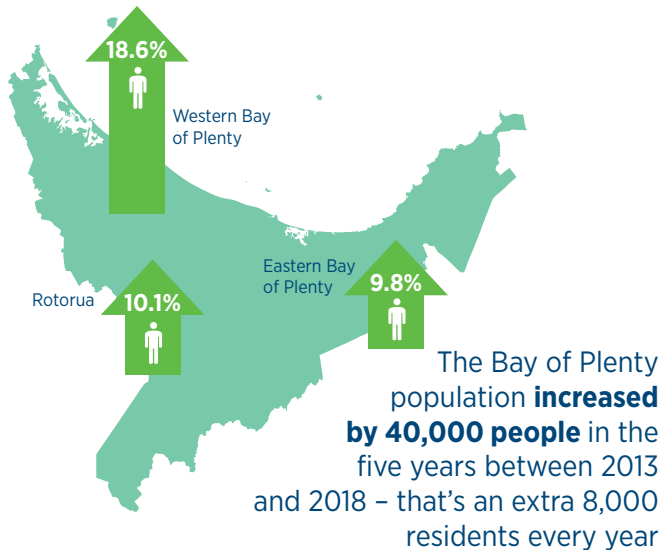
## THE REPORT AT A GLANCE

### TARGETS

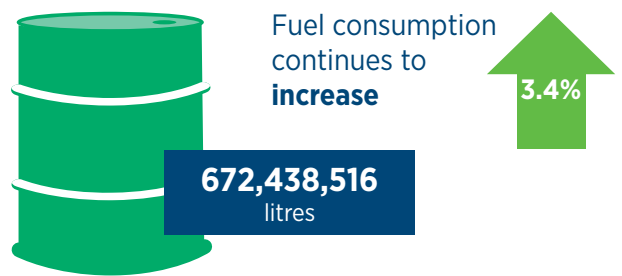
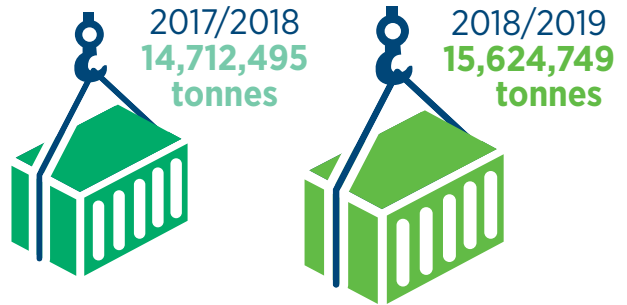
<b>SAFETY (30%)</b>	TARGET	ACTUAL	<b>ENVIRONMENTAL SUSTAINABILITY (10%)</b>	TARGET	ACTUAL
Road trauma (deaths & serious injuries)	0	182	Transport emissions	ND	ND
Alcohol (factor in deaths & serious injuries)	0	75			
Drugs (factor in deaths & serious injuries)	0	24	<b>PUBLIC HEALTH (5%)</b>	TARGET	ACTUAL
Speed (factor in deaths & serious injuries)	0	49	Nitrogen dioxide (NO <sub>2</sub> micrograms/m <sup>3</sup> air – Tauranga/Rotorua)	↓ 26.33/ 21.0	27.66/ 21.80
Social cost (deaths & serious injuries)	0	\$314.9M	Travel on unsealed roads (vehicle kms travelled/day)	↓ 34,303	34,249
Rail trauma (deaths & injuries)	0	ND	Public transport coverage (% of addresses within 500m of a bus stop)	B	69.7
			<b>ENERGY EFFICIENCY (5%)</b>	TARGET	ACTUAL
<b>ECONOMIC EFFICIENCY (20%)</b>	TARGET	ACTUAL	Energy use (person kms/litre of fuel)	B	4.76
Regional contribution to national GDP (%)	↑ 5.2	5.6	Electric vehicles (double the previous year)	382	378
Network reliability - Tauranga (mins delay/km)	↓ 0.47	ND	Single occupancy vehicles (kms/person/year)	ND	ND
Network reliability - Rotorua (mins delay/km)	ND	ND			
Rail freight (billion net tonne kms)	↑ 1.299	1.536	<b>AFFORDABILITY (5%)</b>	TARGET	ACTUAL
			Local road condition/cost (% smooth travel exposure /\$ lane km for routine maintenance)	↑ 91.62/ ↓ 514	93.23/ 396
<b>ACCESS AND RESILIENCE (15%)</b>	TARGET	ACTUAL	State Highway condition/cost (% smooth travel exposure /\$ lane km for routine maintenance)	↑ 95.80/ ND	94.87/ ND
Closure of strategic road routes (hrs/yr)	↓ 70	85	Rail track quality (track quality index)	↑ 28.34	30.01
Sustainable mode share (% trips)	B	12			
			<b>LAND USE AND TRANSPORT INTEGRATION (10%)</b>	TARGET	ACTUAL
Person kilometres (million kms/year)	B	3,095	Public transport (trips/person/year)	↑ 9.7	7.3
Public transport (trips/person/year)	↑ 9.7	7.3	Rail mode share (Port of Tauranga container terminal – % gate in / gate out)	50.1/41.6	48.4/42.2 P
Rail mode share (Port of Tauranga container terminal – % gate in / gate out)	50.1/41.6	48.4/42.2 P	Distance cycled (kms/person/year)	B	78
Distance cycled (kms/person/year)	B	78	Time walking (hours/person/year)	B	31
Time walking (hours/person/year)	B	31			

**B** = New baseline  
**ND** = No/insufficient data  
**P** = Partially achieved

# DEMAND INDICATORS

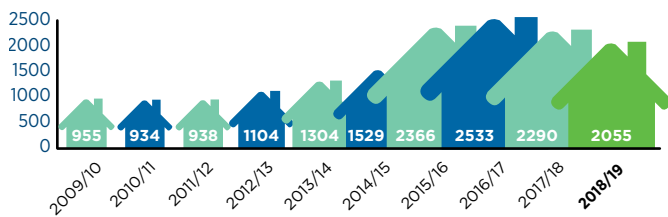


Export volumes loaded at the Port of Tauranga **increased 6.2% in the last year**



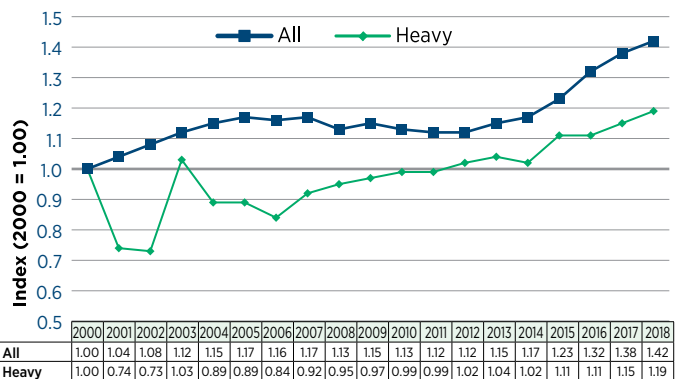
**59%** of the fuel sold was **DIESEL**

Housing development is **maintaining current growth trends**



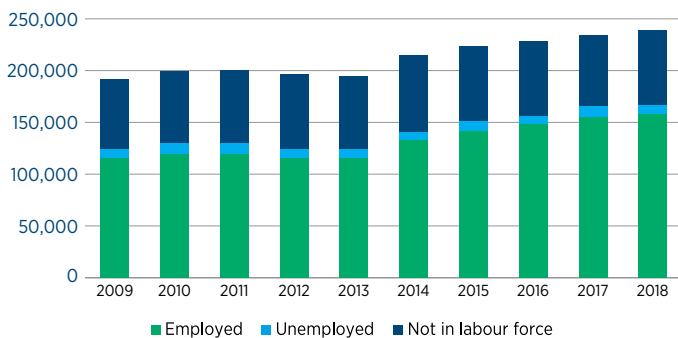
State highway general and heavy traffic volumes **continued to increase**

**Indexed Bay of Plenty State Highway Traffic Volumes (continuously monitored sites)**



The employed labour force continues to **grow**

**Bay of Plenty Labour Force**



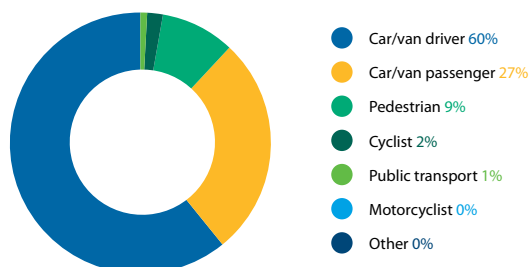
# ACCESS & RESILIENCE

National and regional **strategic road routes** were closed for a total of **85 hours** in 2018

**93%** of these closures were for **crashes or road incidents**

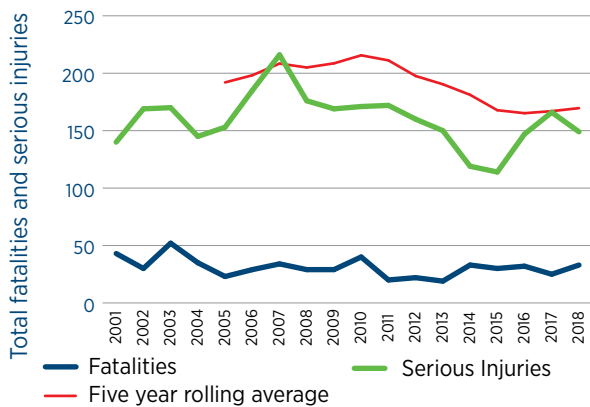


The proportion of all **trips using more sustainable modes (walking, cycling or public transport)** was **12%** for the 2015-18 period.



## SAFETY

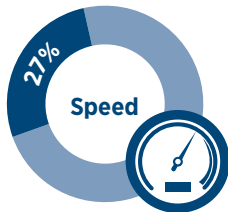
**Fatalities increased and serious injuries decreased** on our roads between 2017 and 2018, while the five year average continued to trend slightly upwards



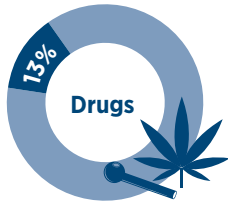
**Alcohol** was identified as a contributing factor in **41%** of all deaths and serious injuries.



**Speed** was identified as a contributing factor in **27%** of all deaths and serious injuries.



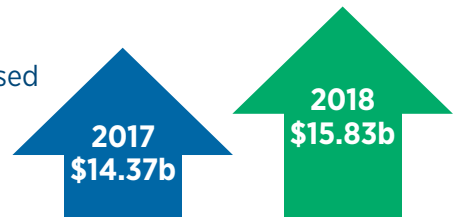
**Drugs** were identified as a contributing factor in **13%** of all deaths and serious injuries



**+** The social cost of deaths and serious injuries on the region's road network was estimated to be **\$314.9M** in 2018

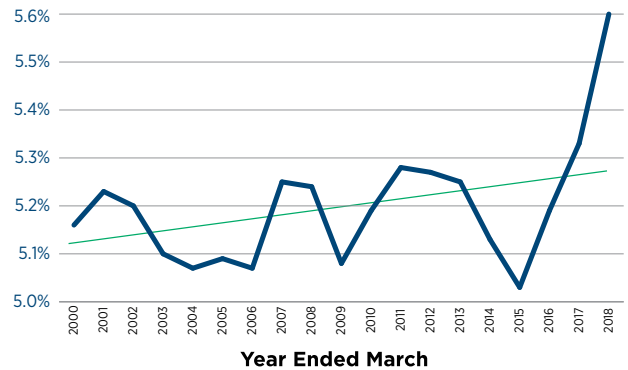
## ECONOMIC EFFICIENCY

Regional GDP increased by **10.2%**



Regional GDP as a proportion of national GDP **increased**

**Regional GDP (% of National GDP)**



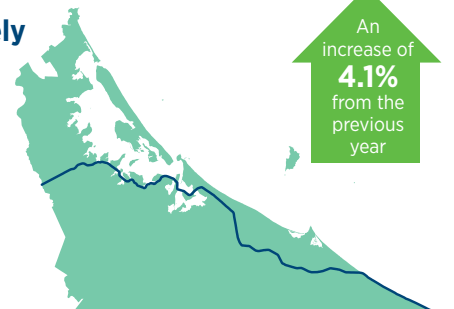
**1.536 billion**

net tonne kilometres of **rail freight** was moved to/from or within the region



That's up **10.1%** from the previous year

**Approximately 465,000 containers** were carried on the East Coast Main Trunk Rail Line



An increase of **4.1%** from the previous year

## AFFORDABILITY

Routine maintenance on local roads cost **\$396** per lane km while smooth travel exposure was **93.2%**



Smooth travel exposure on the region's state highways was **94.9%**



**Track quality** on the East Coast Main Trunk rail line continued to **improve**

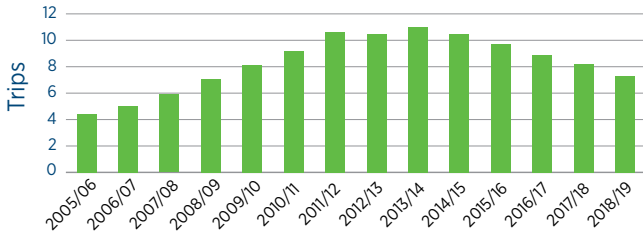
**3.1%**



# LAND USE & TRANSPORT INTEGRATION

While **region-wide the annual number of trips on public transport** per person has continued to **trend downwards**, there have been recent **patronage increases in Tauranga**.

Annual bus trips per person, Bay of Plenty



In 2018 the mode share for land based freight movements in and out of the Port of Tauranga container terminal was...



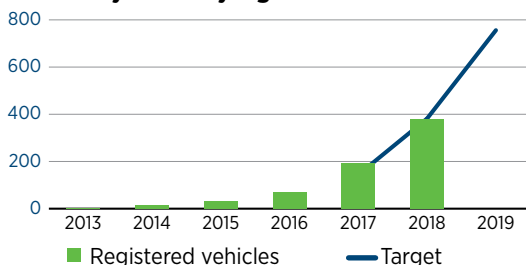
Each person **walked for 31 hours** and **cycled 78 kms** on average... per year over the 2015-18 period.

# ENERGY EFFICIENCY

There were **378 light electric vehicles** registered in the region by the end of 2018



Bay of Plenty Light Electric Vehicles



For more information visit our website [www.boprc.govt.nz](http://www.boprc.govt.nz), call 0800 884 880 or email [info@boprc.govt.nz](mailto:info@boprc.govt.nz)

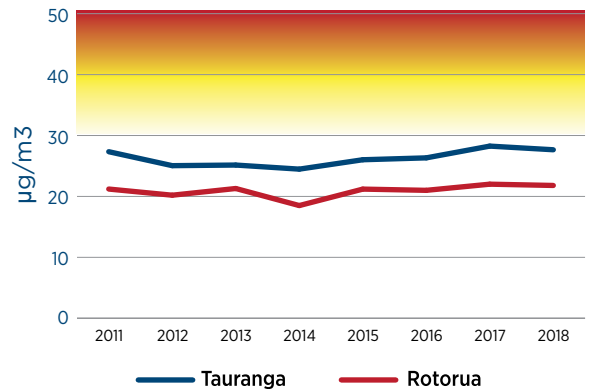
# PUBLIC HEALTH

Average annual **nitrogen dioxide** concentrations were

**27.66 micrograms/m<sup>3</sup>** of air across **6 sites in Tauranga** and **21.80 micrograms** for **1 site in Rotorua** (concentrations above 30 micrograms may have adverse effects on human health)



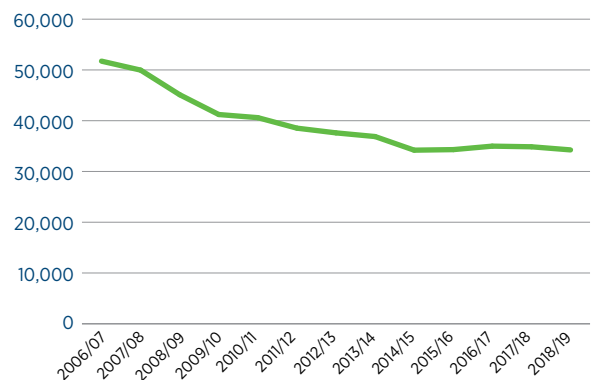
Average annual NO<sub>2</sub> concentrations



Vehicle **travel on unsealed roads** throughout the region is **decreasing at a slower rate than previously**



Total vehicle kms travelled on unsealed roads per day



The proportion of **addresses in the region within 500m of a bus stop** is currently **69.7%**