
Reader's Guide

There may be some parts of this regional plan that are of particular interest to the reader. To find these parts, the following guide gives a brief summary of what each chapter is about.

Guide to Regional Rules: a list of all the regional rules in this plan.

Conversion Index for Provisions: provides a guidance table to convert provision numbers from the system used in previous versions with the alphanumeric system used in the current version.

Introduction: names the regional plan; defines its geographical coverage and the resource management issues within its scope; and outlines the purpose of the regional plan.

Kaitiakitanga: provisions to address section 6(e), 7(a) and 8 of the Resource Management Act 1991.

IM Integrated Management of Land and Water: provisions to address the integrated management of land and water resources in the Bay of Plenty region. Includes surface water and groundwater quality, soil conservation and land management practice issues (including riparian management), and effects of land cover on water quantity.

LM Land Management: provisions to manage the adverse effects of disturbance of land and soil by earthworks, cultivation, quarries, harvesting and vegetation clearance.

DW Discharges to Water and Land: specific provisions to manage the adverse effects of discharges of contaminants to water and land, discharges of water to water, stormwater discharges, and discharges from existing contaminated sites. This chapter relates to section 15 of the Resource Management Act 1991.

OSET On-site Effluent Treatment: no current content.

WQ Water Quantity and Allocation: provisions to allocate surface and groundwater, manage the adverse effects of damming and diversion, address the artificial control of lake water levels, and manage flood hazards. This chapter relates to section 14 of the Resource Management Act 1991. Instream minimum flow requirements are established in this chapter.

BW Beds of Water Bodies: provisions to manage the effects of activities in, on, under or over the beds of rivers, streams, lakes, and land drainage canals. Covers structures, disturbances of the bed, deposition of substances, reclamation and drainage, introduction or removal of plants, and stock presence in the beds of surface water bodies. This chapter relates to section 13 of the Resource Management Act 1991.

WL Wetlands: provisions to protect and maintain wetlands in the region, and encourage the creation of new wetlands in appropriate areas.

TH Tauranga Harbour: provisions to manage the Tauranga Harbour.

KM Kaituna Maketū and Pongakawa: no current content.

RL Rotorua Lakes: provisions to manage the Rotorua Lakes.

LR Lake Rotorua Nutrient Management: no current content.

TW Tarawera: no current content.

RT Rangitāiki: no current content.

WT Whakatāne and Tauranga: no current content.

OH Ōhiwa Harbour and Waioatahe: provisions to manage the Ōhiwa Harbour and Waioatahe.

WO Waioeka and Otara: no current content.

EC East Coast: provisions to manage freshwater in the East Coast.

GR Geothermal Resources: provisions to manage the allocation, damming and diversion, discharge of geothermal heat, fluid and energy. Drilling of geothermal bores and geothermal hazards are also addressed. This chapter relates to sections 14 and 15 of the Resource Management Act 1991.

NH Natural Hazards: contains provisions for management of flood hazards and land drainage.

AQ Air Quality: no current content.

Schedules 1 to 14: Contain more detailed information and data related to the above sections necessary to the provisions and requirements of the regional plan.

Definition of Terms: used in this regional plan.

Bibliography

Appendix 1: Explanation and Principal reasons for provisions

Appendix 2: Financial Contributions: defines circumstances where financial contributions may be used in relation to activities controlled by this regional plan, and the amount of the financial contribution

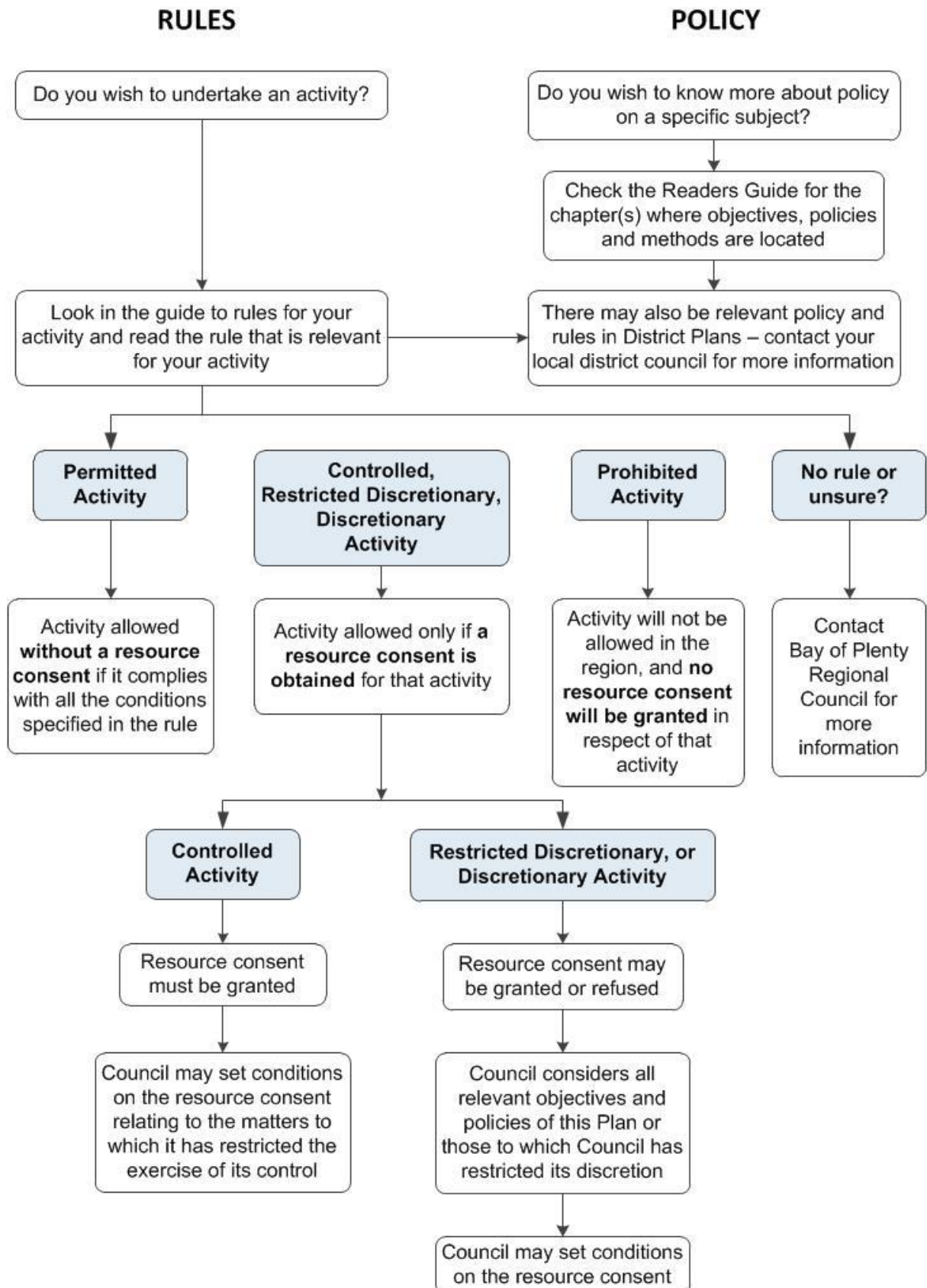
Appendix 3: Information to be submitted with Resource Consent Applications: directs resource consent applicants to contact the Bay of Plenty Regional Council to ensure sufficient information is submitted with a consent application.

Appendix 4: Anticipated Environmental Results: outlines the anticipated environmental results from implementation of the provisions of this regional plan.

Appendix 5: Cross Boundary Issues: the methods and processes that will be used to identify and address resource management issues that cross the boundaries between districts, and between regional councils.

Appendix 6: Plan Review Process: The process that will be used to review this regional plan, and assess the effectiveness and efficiency of its provisions.

How to use this Regional Plan



List of Abbreviations and Acronyms

| | |
|------------------------|---|
| Act/The Act | Resource Management Act 1991 |
| AEP | Annual Exceedance Probability |
| CSC | Comprehensive Stormwater Consents |
| Regional Council | Bay of Plenty Regional Council |
| IFIM | Instream Flow Incremental Methodology |
| IMFR | Instream Minimum Flow Requirement |
| LTP | Long Term Plan |
| MALF | Mean Annual Low Flow |
| NERMN | Natural Environment Regional Monitoring Network |
| NZTA | New Zealand Transport Agency |
| OSET Plan | On-Site Effluent Treatment Regional Plan |
| RHYHABSIM | River Hydraulic Habitat simulation |
| The/this regional plan | Regional Natural Resources Plan |
| TLI | Trophic Level Index |
| WMA | Wetland Management Agreement |

Guide to Regional Rules

Activities under this regional plan are permitted, discretionary or prohibited. A permitted activity is allowed without a resource consent if it complies with all the conditions specified in the rule. A discretionary activity is allowed only if a resource consent is obtained for that activity. A prohibited activity will not be allowed in the region, and no resource consent will be granted in respect of that activity.

| Activity | Rule Number |
|--|---|
| Land and Soil Disturbance Activities | |
| Coastcare Works | LM R5, LM R6 |
| Cultivation | LM R15, LM R16 |
| Earthworks and Quarries | LM R1, LM R2, LM R3, LM R4 |
| Forest Harvesting and Earthworks by Accredited Operators | LM R11, LM R12 |
| Land and Soil Disturbance by Vegetation Clearance | LM R7, LM R8, LM R9, LM R10 |
| Vegetation Clearance by Burning | LM R13, LM R14 |
| Grazing and Stock in the Beds of Surface Water Bodies | |
| Controlled Stock Crossings | BW R37 |
| Grazing of Land | LM R17, LM R18 |
| Stock in the Beds of Surface Water Bodies | BW R38, BW R39, BW R40 |
| Discharges of Nitrogen or Phosphorus from Land Use and Discharge Activities in the Rotorua Lakes Catchments | |
| Land Use Activities in Other Rotorua Lakes | RL R8, RL R9 |
| Land Use Activities in Rotorua Lakes Catchment | RL R1, RL R2, RL R3, RL R4, RL R5, RL R6, RL R7 |
| Discharges to Water and Land | |
| Agrichemicals - Application to Land | DW R12, DW R8 |
| Aquatic Herbicide for Weed Control - Discharge Over Water | DW R1, DW R8 |
| Bark and Wood Waste - Discharge to Land | DW R18, DW R8 |
| Compost, Wood Fibre, Animal Manure, Grade Aa Biosolids or Vermiculture Material - Discharge to Land | DW R10, DW R8 |
| Composting Operations (Greenwaste) - Discharge of contaminants to land in circumstances where it may enter water | DW R16, DW R8 |
| Composting Operations (Offal and Animal Carcasses) - Discharge of contaminants to land in circumstances where it may enter water | DW R17, DW R8 |
| Contaminated Land - Active Remediation, Remediation or Disturbance | DW R24, DW R25, DW R8 |
| Dairy Shed or Piggery Effluent - Discharge to Land | DW R19, DW R8 |

| Activity | Rule Number |
|---|------------------------|
| Discharge of Water to Water | DW R6, DW R8 |
| Discharge of Water to Water Between Artificial Watercourses | DW R4, DW R8 |
| Discharges to Water or Land | DW R8 |
| Dumping of Untreated Sewage and Household Wastes, and Discharge of Petroleum Hydrocarbons | DW R7, DW R8 |
| Dye or Gas Tracers - Discharge to Water | DW R2, DW R8 |
| Emergency Service Fire Training - Discharge of Foam to Land | DW R9, DW R8 |
| Existing Farm Drains and Pumped Drainage Areas - Take, Diversion and Discharge of Water | DW R3, DW R8 |
| Farm Dumps - Discharge of contaminants to land in circumstances where it may enter water | DW R13, DW R8 |
| Fertiliser - Application to Land | DW R11, DW R8 |
| Land Drainage Canals, Artificial Watercourses, and Modified Watercourses - Discharge of Salt Water to Water | DW R5, DW R8 |
| Offal Holes - Discharge of contaminants to land in circumstances where it may enter water | DW R14, DW R8 |
| Silage Pits and Stacks - Discharge of contaminants to land in circumstances where it may enter water | DW R15, DW R8 |
| Stormwater - Discharge to Land Soakage | DW R22, DW R23, DW R8 |
| Stormwater - Discharge to Water | DW R20, DW R21, DW R8 |
| Take and Use of Water¹ | |
| Bore Installation | 39, 40, 43 |
| Dewatering of Building and Construction Sites - Take and Discharge Water | 42, 43 |
| Groundwater - Take and Use | 38, 43 |
| Surface Water - Take and Use | 41, 41A, 43 |
| Take and Use of Water | 43 |
| Damming and Diversion of Water | |
| Damming of Surface Runoff Water | WQ R16, WQ R17, WQ R21 |
| Damming of Water in the Bed of a River or Stream | WQ R18, WQ R19, WQ R21 |
| Damming or Diversion of Water | WQ R21 |
| Diversion of Stormwater (Surface Runoff) | WQ R14, WQ R21 |
| Existing Flood Control Structures - Damming and Diversion of Flood Waters | WQ R15, WQ R21 |
| Lawfully Established Hydroelectric Power Schemes | WQ R20 |

¹ Rules in this section have not been renumbered due to this section being subject to Plan Change 9 (Water Quantity)

| Activity | Rule Number |
|---|--|
| Temporary Damming of Water in a Canal or Drain | WQ R13, WQ R21 |
| Motu River and Specified Tributaries | |
| Activities in the Motu River Catchment (dam, divert, discharge, take and use water) | EC R1 |
| Artificial Control of Water Levels in Natural Lakes | |
| Artificial Control of Water Levels in Natural Lakes | WQ R22 |
| Activities in the Beds of Rivers, Streams, and Lakes | |
| Activity in the Beds of Streams, Rivers and Lakes | BW R36 |
| Bed Disturbance - Boat Ramp and Jetty Maintenance | BW R30, BW R36 |
| Bed Disturbance - Hazard Management | BW R31, BW R36 |
| Bed Disturbance - Specified Purposes | BW R32, BW R36 |
| Culverts (including extensions) | BW R15, BW R16, BW R17, BW R18, BW R19, BW R36 |
| Culverts and Single Span Bridges - City Council, District Council, NZ Transport Agency only | BW R12, BW R13, BW R14, BW R36 |
| Discharge Structures | BW R6, BW R36 |
| Drift Decks | BW R27, BW R28, BW R36 |
| Fords | BW R24, BW R25, BW R36 |
| Lines, Cables or Pipelines - Under the Bed of a River, Stream or Lake | BW R9, BW R10, BW R36 |
| Lines, Cables, Ropeways and Associated Structures - Over the Bed of a River, Stream or Lake | BW R8, BW R36 |
| Mai Mai, Whitebait Stands and Game Bird Shooting Structures | BW R26, BW R36 |
| Maintenance - Land Drainage Canals | NH R2, BW R36 |
| Maintenance - River Schemes | NH R1, BW R36 |
| Maintenance - Specified Streams and Rivers | NH R3, BW R36 |
| Monitoring and Sampling Structures | BW R11, BW R36 |
| Navigational Markers, Signs, Ski Lane Markers and Canoe Gates | BW R7, BW R36 |
| Plant - Introduction or Removal | BW R34, BW R35, BW R36 |
| Reclamation - Existing only | BW R33 |
| Service Crossings Attached to Bridges | BW R23, BW R36 |
| Single Span Bridges | BW R20, BW R21, BW R22, BW R36 |
| Structure - Maintenance | BW R2, BW R36 |
| Structure - Removal or Demolition | BW R29, BW R36 |

| Activity | Rule Number |
|---|-----------------------------|
| Structure - Use, Extension and Upgrade | BW R1, BW R3, BW R4, BW R36 |
| Surface Water Intake Structures | BW R5, BW R36 |
| Geothermal Water, Heat or Energy | |
| Geothermal Bore Installation | GR R4, GR R5, GR R6, GR R7 |
| Geothermal Water - Damming or Diversion | GR R8 |
| Geothermal Water - Discharge | GR R9, GR R10 |
| Geothermal Water - Take and Use | GR R2, GR R3 |
| Geothermal Water - Use in Accordance with Tikanga Maori | GR R1 |
| Wetlands | |
| Introduction of Indigenous Plants | WL R1, WL R9 |
| Maintenance and Enhancement of Certain Artificial Water bodies | WL R4, WL R9 |
| Maintenance and Enhancement Under a Registered Management Document | WL R2, WL R9 |
| Maintenance of Wetlands Created for Hydroelectric Generation | WL R5, WL R9 |
| Minor Disturbance of Vegetation by Cable Logging | WL R7, WL R8, WL R9 |
| Modification of a Wetland | WL R9 |
| Removal of Exotic Vegetation from a Wetland by Hand or by Machinery | WL R6, WL R9 |
| Sustainable Use of Wetlands | WL R3, WL R9 |

Conversion Index for Provisions

The table provides a guide to convert provision numbers from the system used in previous versions with the alphanumeric system used in the current version.

| Section | Issue | Previous | Objective | Previous | Policy | Previous | Method | Previous | Rule | Previous |
|---|-------|----------|-----------|----------|--------|----------|--------|----------|------|----------|
| Kaitiakitanga | KT I1 | 1 | KT O1 | 1 | KT P1 | 1 | KT M1 | 1 | | |
| | KT I2 | 2 | KT O2 | 2 | KT P2 | 2 | KT M2 | 2 | | |
| | KT I3 | 3 | KT O3 | 3 | KT P3 | 3 | KT M3 | 3 | | |
| | KT I4 | 4 | KT O4 | 4 | KT P4 | 4 | KT M4 | 4 | | |
| | KT I5 | 5 | KT O5 | 5 | KT P5 | 5 | KT M5 | 5 | | |
| | KT I6 | 6 | KT O6 | 6 | KT P6 | 6 | KT M6 | 6 | | |
| | KT I7 | 7 | KT O7 | 7 | KT P7 | 7 | KT M7 | 7 | | |
| | KT I8 | 8 | | | KT P8 | 8 | KT M8 | 8 | | |
| | KT I9 | 9 | | | KT P9 | 9 | KT M9 | 9 | | |
| | | | | | KT P10 | 10 | KT M10 | 10 | | |
| | | | | | KT P11 | 11 | KT M11 | 11 | | |
| | | | | | KT P12 | 12 | KT M12 | 12 | | |
| | | | | | KT P13 | 13 | KT M13 | 13 | | |
| | | | | | KT P14 | 14 | KT M14 | 14 | | |
| | | | | | KT P15 | 15 | KT M15 | 15 | | |
| | | | | | KT P16 | 16 | KT M16 | 16 | | |
| | | | | | KT P17 | 17 | KT M17 | 17 | | |
| | | | | | KT P18 | 18 | KT M18 | 18 | | |
| | | | | | KT P19 | 19 | KT M19 | 19 | | |
| | | | | | KT P20 | 20 | KT M20 | 20 | | |
| | | | | | | | KT M21 | 21 | | |
| | | | | | | | KT M22 | 22 | | |
| | | | | | | | KT M23 | 23 | | |
| Integrated Management of Land and Water | IM I1 | 11 | IM O1 | 8 | IM P1 | 21 | IM M1 | 25 | | |
| | IM I2 | 12 | IM O2 | 10 | IM P2 | 24 | IM M2 | 28 | | |
| | IM I3 | 15 | IM O3 | 13 | IM P3 | 25 | IM M3 | 29 | | |
| | IM I4 | 16 | IM O4 | 14 | IM P4 | 26 | IM M4 | 30 | | |
| | IM I5 | 17 | IM O5 | 15 | IM P5 | 28 | IM M5 | 44 | | |
| | | | IM O6 | 16 | IM P6 | 30 | IM M6 | 46 | | |
| | | | IM O7 | 22 | IM P7 | 31 | IM M7 | 47 | | |
| | | | | | IM P8 | 32 | IM M8 | 48 | | |
| | | | | | | | IM M9 | 50 | | |
| | | | | | | | IM M10 | 56 | | |
| | | | | | | | IM M11 | 57 | | |
| | | | | | | | IM M12 | 60 | | |
| | | | | | | | IM M13 | 64 | | |
| | | | | | | | IM M14 | 65 | | |
| | | | | | | | IM M15 | 66 | | |
| | | | | | | | IM M16 | 67 | | |
| | | | | | | | IM M17 | 68 | | |
| | | | | | | | IM M18 | 72 | | |
| | | | | | | | IM M19 | 73 | | |
| | | | | | | | IM M20 | 74 | | |
| | | | | | | | IM M21 | 75 | | |
| | | | | | | | IM M22 | 76 | | |
| | | | | | | | IM M23 | 77 | | |
| | | | | | | | IM M24 | 79 | | |
| | | | | | | | IM M25 | 80 | | |
| | | | | | | | IM M26 | 81 | | |

| Section | Issue | Previous | Objective | Previous | Policy | Previous | Method | Previous | Rule | Previous |
|------------------------------|--------|----------|-----------|----------|--------|----------|--------|----------|--------|----------|
| | | | | | | | IM M27 | 82 | | |
| | | | | | | | IM M28 | 84 | | |
| Land Management | LM I1 | 10 | LM O1 | 9 | LM P1 | 22 | LM M1 | 24 | LM R1 | 1 |
| | LM I2 | 13 | LM O2 | 17 | LM P2 | 23 | LM M2 | 26 | LM R2 | 1A |
| | | | LM O3 | 19 | LM P3 | 27 | LM M3 | 27 | LM R3 | 1B |
| | | | LM O4 | 20 | LM P4 | 29 | LM M4 | 31 | LM R4 | 1C |
| | | | LM O5 | 21 | | | LM M5 | 32 | LM R5 | 1D |
| | | | | | | | LM M6 | 33 | LM R6 | 1E |
| | | | | | | | LM M7 | 34 | LM R7 | 2 |
| | | | | | | | LM M8 | 35 | LM R8 | 2A |
| | | | | | | | LM M9 | 36 | LM R9 | 2B |
| | | | | | | | LM M10 | 37 | LM R10 | 2C |
| | | | | | | | LM M11 | 38 | LM R11 | 3 |
| | | | | | | | LM M12 | 39 | LM R12 | 3A |
| | | | | | | | LM M13 | 40 | LM R13 | 4 |
| | | | | | | | LM M14 | 45 | LM R14 | 4A |
| | | | | | | | LM M15 | 49 | LM R15 | 5 |
| | | | | | | | LM M16 | 51 | LM R16 | 5A |
| | | | | | | | LM M17 | 53 | LM R17 | 10 |
| | | | | | | | LM M18 | 54 | LM R18 | 10A |
| | | | | | | | LM M19 | 55 | | |
| | | | | | | | LM M20 | 58 | | |
| | | | | | | | LM M21 | 59 | | |
| | | | | | | | LM M22 | 61 | | |
| | | | | | | | LM M23 | 70 | | |
| | | | | | | | LM M24 | 71 | | |
| | | | | | | | LM M25 | 78 | | |
| Discharges to Water and Land | DW I1 | 18 | DW O1 | 23 | DW P1 | 38 | DW M1 | 97 | DW R1 | 16 |
| | DW I2 | 19 | DW O2 | 24 | DW P2 | 39 | DW M2 | 98 | DW R2 | 18 |
| | DW I3 | 21 | DW O3 | 25 | DW P3 | 40 | DW M3 | 99 | DW R3 | 22 |
| | DW I4 | 14 | DW O4 | 27 | DW P4 | 41 | DW M4 | 100 | DW R4 | 23 |
| | DW I5 | 20 | DW O5 | 28 | DW P5 | 42 | DW M5 | 102 | DW R5 | 24 |
| | DW I6 | 22 | DW O6 | 29 | DW P6 | 43a | DW M6 | 103 | DW R6 | 33 |
| | DW I7 | 23 | DW O7 | 26 | DW P7 | 45 | DW M7 | 105 | DW R7 | 36 |
| | DW I8 | 24 | DW O8 | 30 | DW P8 | 46 | DW M8 | 107 | DW R8 | 37 |
| | DW I9 | 25 | DW O9 | 31 | DW P9 | 47 | DW M9 | 108 | DW R9 | 17 |
| | DW I10 | 26 | DW O10 | 32 | DW P10 | 48 | DW M10 | 109 | DW R10 | 19 |
| | DW I11 | 27 | DW O11 | 33 | DW P11 | 49 | DW M11 | 110 | DW R11 | 20 |
| | DW I12 | 28 | DW O12 | 34 | DW P12 | 43 | DW M12 | 111 | DW R12 | 21 |
| | | | DW O13 | 35 | DW P13 | 44 | DW M13 | 112 | DW R13 | 25 |
| | | | DW O14 | 36 | DW P14 | 50 | DW M14 | 113 | DW R14 | 26 |
| | | | DW O15 | 37 | DW P15 | 51 | DW M15 | 114 | DW R15 | 27 |
| | | | DW O16 | 38 | DW P16 | 52 | DW M16 | 115 | DW R16 | 28 |
| | | | | | DW P17 | 53 | DW M17 | 116 | DW R17 | 28a |
| | | | | | DW P18 | 54 | DW M18 | 117 | DW R18 | 29 |
| | | | | | DW P19 | 55 | DW M19 | 101 | DW R19 | 32 |
| | | | | | DW P20 | 56 | DW M20 | 104 | DW R20 | 30 |
| | | | | | DW P21 | 57 | DW M21 | 106 | DW R21 | 30A |
| | | | | | DW P22 | 58 | DW M22 | 118 | DW R22 | 31 |
| | | | | | DW P23 | 59 | DW M23 | 119 | DW R23 | 31A |
| | | | | | DW P24 | 60 | DW M24 | 120 | DW R24 | 34 |
| | | | | | DW P25 | 61 | DW M25 | 121 | DW R25 | 35 |
| | | | | | DW P26 | 62 | DW M26 | 122 | | |
| | | | | | DW P27 | 63 | DW M27 | 123 | | |
| | | | | | | | DW M28 | 124 | | |

| Section | Issue | Previous | Objective | Previous | Policy | Previous | Method | Previous | Rule | Previous |
|---|-------|----------|-----------|----------|--------|----------|--------|----------|------|----------|
| | | | | | | | DW M29 | 125 | | |
| | | | | | | | DW M30 | 126 | | |
| | | | | | | | DW M31 | 127 | | |
| | | | | | | | DW M32 | 128 | | |
| | | | | | | | DW M33 | 129 | | |
| | | | | | | | DW M34 | 130 | | |
| | | | | | | | DW M35 | 131 | | |
| | | | | | | | DW M36 | 132 | | |
| | | | | | | | DW M37 | 133 | | |
| | | | | | | | DW M38 | 134 | | |
| | | | | | | | DW M39 | 135 | | |
| | | | | | | | DW M40 | 136 | | |
| | | | | | | | DW M41 | 137 | | |
| | | | | | | | DW M42 | 138 | | |
| | | | | | | | DW M43 | 139 | | |
| | | | | | | | DW M44 | 140 | | |
| | | | | | | | DW M45 | 141 | | |
| | | | | | | | DW M46 | 142 | | |
| | | | | | | | DW M47 | 143 | | |
| | | | | | | | DW M48 | 144 | | |
| | | | | | | | DW M49 | 145 | | |
| | | | | | | | DW M50 | 146 | | |
| | | | | | | | DW M51 | 147 | | |
| | | | | | | | DW M52 | 148 | | |
| | | | | | | | DW M53 | 149 | | |
| | | | | | | | DW M54 | 150 | | |
| | | | | | | | DW M55 | 151 | | |
| Water Quantity Take and use of Surface Water and Groundwater² | 29 | | 39 | | 64 | | 152 | | 38 | |
| | 30 | | 40 | | 65 | | 153 | | 39 | |
| | 31 | | 41 | | 66 | | 154 | | 39A | |
| | 32 | | 42 | | 67 | | 155 | | 40 | |
| | 33 | | 43 | | 68 | | 156 | | 40A | |
| | 34 | | 44 | | 69 | | 157 | | 40B | |
| | | | 45 | | 70 | | 158 | | 41 | |
| | | | 46 | | 71 | | 159 | | 41A | |
| | | | | | 72 | | 160 | | 42 | |
| | | | | | 73 | | 161 | | 43 | |
| | | | | | 74 | | 162 | | | |
| | | | | | 75 | | 163 | | | |
| | | | | | 76 | | 164 | | | |
| | | | | | 77 | | 165 | | | |
| | | | | | 78 | | 166 | | | |
| | | | | | 79 | | 167 | | | |
| | | | | | 80 | | 168 | | | |
| | | | | | | | 169 | | | |
| | | | | | | | 170 | | | |
| | | | | | | | 171 | | | |
| | | | | | | 172 | | | | |
| | | | | | | 173 | | | | |
| | | | | | | 174 | | | | |
| | | | | | | 175 | | | | |
| | | | | | | 176 | | | | |
| | | | | | | 177 | | | | |

² Provisions in this section have not been renumbered due to this section being subject to Plan Change 9 (Water Quantity)

| Section | Issue | Previous | Objective | Previous | Policy | Previous | Method | Previous | Rule | Previous |
|--|--------|----------|-----------|----------|--------|----------|--------|----------|--------|----------|
| | | | | | | | 178 | | | |
| | | | | | | | 179 | | | |
| | | | | | | | 180 | | | |
| | | | | | | | 181 | | | |
| | | | | | | | 182 | | | |
| | | | | | | | 183 | | | |
| | | | | | | | 184 | | | |
| | | | | | | | 185 | | | |
| Water Quantity Remainder of Section | WQ I12 | 35 | WQ O12 | 47 | WQ P32 | 81 | WQ M10 | 186 | WQ R13 | 44 |
| | WQ I13 | 36 | WQ O13 | 48 | WQ P33 | 82 | WQ M11 | 187 | WQ R14 | 44A |
| | WQ I14 | 40 | WQ O14 | 52 | WQ P34 | 83 | WQ M12 | 188 | WQ R15 | 45 |
| | WQ I15 | 41 | WQ O15 | 53 | WQ P35 | 84 | WQ M13 | 198 | WQ R16 | 46 |
| | | | WQ O16 | 54 | WQ P36 | 85 | WQ M14 | 199 | WQ R17 | 46A |
| | | | | | WQ P37 | 86 | WQ M15 | 200 | WQ R18 | 47 |
| | | | | | WQ P38 | 92 | | | WQ R19 | 47B |
| | | | | | WQ P39 | 93 | | | WQ R20 | 47C |
| | | | | | WQ P40 | 94 | | | WQ R21 | 48 |
| | | | | | WQ P41 | 95 | | | WQ R22 | 50 |
| | | | | | WQ P42 | 96 | | | | |
| | | | | WQ P43 | 97 | | | | | |
| Beds Of Water Bodies | BW I1 | 42 | BW O1 | 55 | BW P1 | 98 | BW M1 | 201 | BW R1 | 51 |
| | BW I2 | 43 | BW O2 | 56 | BW P2 | 99 | BW M2 | 202 | BW R2 | 51A |
| | BW I3 | 44 | BW O3 | 57 | BW P3 | 100 | BW M3 | 203 | BW R3 | 51B |
| | BW I4 | 45 | BW O4 | 58 | BW P4 | 101 | BW M4 | 204 | BW R4 | 51C |
| | BW I5 | 46 | BW O5 | 59 | BW P5 | 102 | BW M5 | 205 | BW R5 | 52 |
| | BW I6 | 47 | BW O6 | 60 | BW P6 | 103 | BW M6 | 206 | BW R6 | 53 |
| | | | BW O7 | 61 | BW P7 | 104 | BW M7 | 207 | BW R7 | 54 |
| | | | BW O8 | 62 | BW P8 | 105 | BW M8 | 208 | BW R8 | 55 |
| | | | BW O9 | 63 | BW P9 | 106 | BW M9 | 209 | BW R9 | 56 |
| | | | BW O10 | 64 | BW P10 | 107 | BW M10 | 210 | BW R10 | 56A |
| | | | | | BW P11 | 108 | BW M11 | 211 | BW R11 | 57 |
| | | | | | BW P12 | 109 | BW M12 | 212 | BW R12 | 58 |
| | | | | | BW P13 | 110 | BW M13 | 213 | BW R13 | 58A |
| | | | | | BW P14 | 111 | BW M14 | 214 | BW R14 | 58B |
| | | | | | BW P15 | 112 | BW M15 | 215 | BW R15 | 59 |
| | | | | | BW P16 | 113 | BW M16 | 216 | BW R16 | 59A |
| | | | | | BW P17 | 114 | BW M17 | 217 | BW R17 | 59B |
| | | | | | BW P18 | 115 | BW M18 | 218 | BW R18 | 59C |
| | | | | | BW P19 | 116 | BW M19 | 219 | BW R19 | 59D |
| | | | | | BW P20 | 117 | BW M20 | 220 | BW R20 | 60 |
| | | | | | BW P21 | 118 | BW M21 | 221 | BW R21 | 60A |
| | | | | | | | BW M22 | 222 | BW R22 | 60B |
| | | | | | | | BW M23 | 223 | BW R23 | 61 |
| | | | | | | | BW M24 | 224 | BW R24 | 62 |
| | | | | | | | BW M25 | 225 | BW R25 | 62A |
| | | | | | | | BW M26 | 226 | BW R26 | 63 |
| | | | | | | | BW M27 | 227 | BW R27 | 64 |
| | | | | | | | BW M28 | 228 | BW R28 | 64A |
| | | | | | | | BW M29 | 229 | BW R29 | 65 |
| | | | | | | | BW M30 | 230 | BW R30 | 66 |
| | | | | | | | BW M31 | 231 | BW R31 | 66A |
| | | | | | | | BW M32 | 232 | BW R32 | 66B |
| | | | | | | | BW M33 | 233 | BW R33 | 67 |
| | | | | | | | BW M34 | 234 | BW R34 | 68 |
| | | | | | | | BW M35 | 235 | BW R35 | 69 |

| Section | Issue | Previous | Objective | Previous | Policy | Previous | Method | Previous | Rule | Previous |
|---------------------------|-------|----------|-----------|----------|--------|----------|--------|----------|--------|----------|
| | | | | | | | BW M36 | 236 | BW R36 | 71 |
| | | | | | | | BW M37 | 237 | BW R37 | 6 |
| | | | | | | | BW M38 | 238 | BW R38 | 7 |
| | | | | | | | BW M39 | 239 | BW R39 | 8 |
| | | | | | | | | | BW R40 | 9 |
| Wetlands | WL I1 | 54 | WL O1 | 73 | WL P1 | 133 | WL M1 | 254 | WL R1 | 78 |
| | WL I2 | 55 | WL O2 | 74 | WL P2 | 134 | WL M2 | 255 | WL R2 | 79 |
| | WL I3 | 56 | WL O3 | 75 | WL P3 | 135 | WL M3 | 256 | WL R3 | 80 |
| | WL I4 | 57 | WL O4 | 76 | WL P4 | 136 | WL M4 | 257 | WL R4 | 81 |
| | WL I5 | 58 | | | WL P5 | 137 | WL M5 | 258 | WL R5 | 82 |
| | | | | | WL P6 | 138 | WL M6 | 259 | WL R6 | 83 |
| | | | | | WL P7 | 139 | WL M7 | 260 | WL R7 | 84 |
| | | | | | WL P8 | 140 | WL M8 | 261 | WL R8 | 84A |
| | | | | | WL P9 | 141 | WL M9 | 262 | WL R9 | 85 |
| | | | | | WL P10 | 142 | WL M10 | 263 | | |
| | | | | | WL P11 | 143 | WL M11 | 264 | | |
| | | | | | WL P12 | 144 | WL M12 | 265 | | |
| | | | | | | | WL M13 | 266 | | |
| | | | | | | | WL M14 | 267 | | |
| | | | | | | | WL M15 | 268 | | |
| | | | | | | | WL M16 | 269 | | |
| | | | | | | | WL M17 | 270 | | |
| | | | | | | | WL M18 | 271 | | |
| | | | | | | | WL M19 | 272 | | |
| | | | | | | | WL M20 | 273 | | |
| | | | | | | | WL M21 | 274 | | |
| | | | | | | | WL M22 | 275 | | |
| Tauranga Harbour | | | TH O1 | 18 | | | | | | |
| Rotorua Lakes | | | RL O1 | 11 | RL P1 | 33 | RL M1 | 41 | RL R1 | 11 |
| | | | RL O2 | 12 | | | RL M2 | 42 | RL R2 | 11A |
| | | | RL O3 | 18 | | | RL M3 | 43 | RL R3 | 11B |
| | | | | | | | RL M4 | 52 | RL R4 | 11C |
| | | | | | | | RL M5 | 62 | RL R5 | 11D |
| | | | | | | | RL M6 | 63 | RL R6 | 11E |
| | | | | | | | RL M7 | 69 | RL R7 | 11F |
| | | | | | | | RL M8 | 83 | RL R8 | 12 |
| | | | | | | | | | RL R9 | 13 |
| Ōhiwa Harbour and Waioahe | | | OH O1 | 18 | | | | | | |
| East Coast | | | | | | | | EC R1 | 49 | |
| Geothermal Resources | GR I1 | 48 | GR O1 | 65 | GR P1 | 119 | GR M1 | 240 | GR R1 | 72 |
| | GR I2 | 49 | GR O2 | 66 | GR P2 | 120 | GR M2 | 241 | GR R2 | 73 |
| | GR I3 | 50 | GR O3 | 67 | GR P3 | 121 | GR M3 | 242 | GR R3 | 74 |
| | GR I4 | 51 | GR O4 | 68 | GR P4 | 122 | GR M4 | 243 | GR R4 | 75 |
| | GR I5 | 52 | GR O5 | 69 | GR P5 | 123 | GR M5 | 244 | GR R5 | 75A |
| | GR I6 | 53 | GR O6 | 70 | GR P6 | 124 | GR M6 | 245 | GR R6 | 75B |
| | | | GR O7 | 71 | GR P7 | 125 | GR M7 | 246 | GR R7 | 75C |
| | | | GR O8 | 72 | GR P8 | 126 | GR M8 | 247 | GR R8 | 76 |
| | | | | | GR P9 | 127 | GR M9 | 248 | GR R9 | 77 |
| | | | | | GR P10 | 128 | GR M10 | 249 | GR R10 | 77A |
| | | | | | GR P11 | 129 | GR M11 | 250 | | |
| | | | | | GR P12 | 130 | GR M12 | 251 | | |
| | | | | | GR P13 | 131 | GR M13 | 252 | | |
| | | | | | GR P14 | 132 | GR M14 | 253 | | |
| Natural Hazards | NH I1 | 37 | NH O1 | 49 | NH P1 | 87 | NH M1 | 189 | NH R1 | 70 |
| | NH I2 | 38 | NH O2 | 50 | NH P2 | 88 | NH M2 | 190 | NH R2 | 70A |

| Section | Issue | Previous | Objective | Previous | Policy | Previous | Method | Previous | Rule | Previous |
|---------|-------|----------|-----------|----------|--------|----------|--------|----------|-------|----------|
| | NH I3 | 39 | NH O3 | 51 | NH P3 | 89 | NH M3 | 191 | NH R3 | 70B |
| | | | | | NH P4 | 90 | NH M4 | 192 | | |
| | | | | | NH P5 | 91 | NH M5 | 193 | | |
| | | | | | | | NH M6 | 194 | | |
| | | | | | | | NH M7 | 195 | | |
| | | | | | | | NH M8 | 196 | | |
| | | | | | | | NH M9 | 197 | | |