

Kaituna River Re-diversion and Te Awa o Ngātoroirangi / Maketū Estuary Enhancement Project

Community Update Meeting
12 June 2019

A decorative graphic at the bottom of the slide consists of several horizontal layers. From top to bottom: a solid green area with a white outline; a solid blue area with a white outline; a blue area with a white grid pattern and a white outline; and a dark blue area with a white grid pattern.

Meeting Agenda

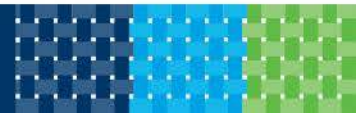
- Recap of project background
- What work has been done since the last update in February?
- What work is still to do?
- How will that affect you?
- He patai / questions



Background



1959 Aerials



Main Project Components

- Excavation of new river diversion channel
- Removal of existing stopbank and construction of new stopbank with rock protection
- River dredging and channel widening
- Installation of 12 box culverts with automated slide gates to control flow into estuary
- Construction of a salinity block across the old river channel with new moorings
- Upgrade of public boat ramp and parking
- Restoration of farmland to a wetland





Stopbanks to be removed

Papahikahawai Island

Papahikahawai Creek

Te Tumu

Proposed wetland

Stop bank

Ford's Cut

Channel filled

Inlet structure

Ford Island

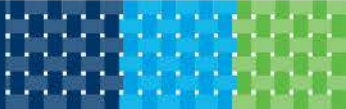
Upgraded public boat ramp + carpark

Ford Road

Kaituna River

Proposed re-diversion channel

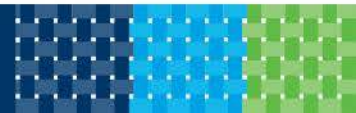
Kaituna Road



Progress report

- Construction started 12 June 2018
- Scheduled completion next summer (19/20)
- Approx. 70% complete as at 7 June 2019
- 33,817 worker hours so far (13,000 since Feb)
- Bulk earthworks and channel works nearing completion

**NOTE: SOME OF THE FOLLOWING PHOTOS
AND VIDEO ARE FROM 3 MAY 2019 - OLD**



Recent actions

- New diversion channel largely complete



*Bunds removed
since photo taken*

*New stopbank and
overlay almost
complete*

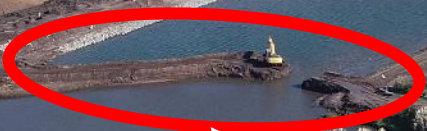


New diversion channel open to river

New Stopbank and overlay

Deepened river loop

Bund being removed





*Te Pa Ika wetlands
Shaping well underway
Planting days planned*

*Papahikahawai
lagoon flushing
with tides*

*Chenier islands and
planting on
Papahikahawai Island*

An aerial photograph of a river system, likely the Kaituna River, flowing through a landscape. The river is dark blue and winds through a mix of green fields and brownish, possibly marshy or undeveloped, areas. In the background, there are some buildings and more fields under a clear sky. The overall scene is captured from a high angle, providing a wide view of the estuary and surrounding land.

**Kaituna River Rediversion
and Maketū Estuary
Enhancement Project**

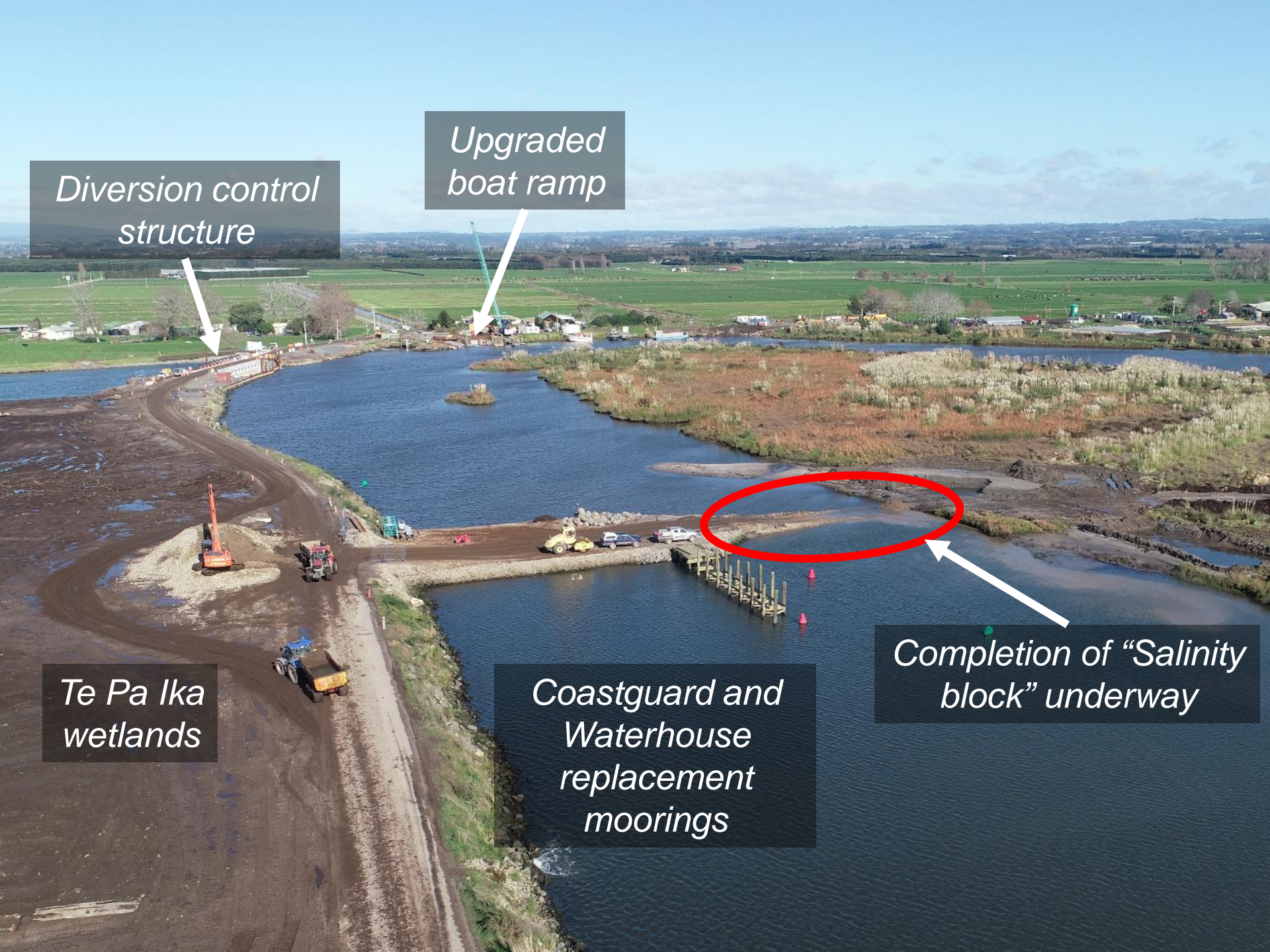
Diversion control structure

Upgraded boat ramp

Te Pa Ika wetlands

Coastguard and Waterhouse replacement moorings

Completion of "Salinity block" underway





Widened and deepened Ford's Cut


Te Pa Ika wetlands



Upgraded boat ramp

Ford Road

Diversion control structure



Te Pa Ika wetlands

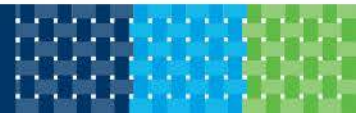
*Widened and
deepened
Ford's Cut*

*Diversion control structure
-
gates in place, sheet piles
to be removed once gate
testing complete*



What work is planned?

- Te Pā Ika wetland shaping and planting
- Placing rock riprap on new diversion channel and Ford Island
- Complete salinity block and onshore facilities
- New jetties and upgraded boat ramp
- Complete new stopbank, topsoil and grass
- Gate testing and commissioning
- Leave 1 gate open to allow some flow into estuary for the remainder of the project



Te Pā Ika - Planting Days



- Community planting days run by BOPRC and Sustainable Coastlines.
 - Thu 20 / Fri 21 June - Schools and Corporates
 - Sat 22 / Sun 23 June - Community and Public
- Meet from 10.00am at site
- Details and registration on BOPRC facebook page or sustainablecoastlines.org/events website
- All planting equipment and instruction provided
- Lunch and refreshments provided by J Swap Contractors



How will you be affected?

- Ford Road will remain closed from 7am to 7pm Monday - Friday.
- Road also closed on Saturdays from 7am to early/mid afternoon.
- Fishers that arrive at Te Tumu Cut before 7am can stay all day until the road re-opens at 7pm
- Boat ramp closed until completion of construction
- Alternative boat ramps at Bell Rd and Maketū



He patai, any questions?

