



PT Infrastructure Update

Public Transport Committee, BoPRC, 8th August 2019

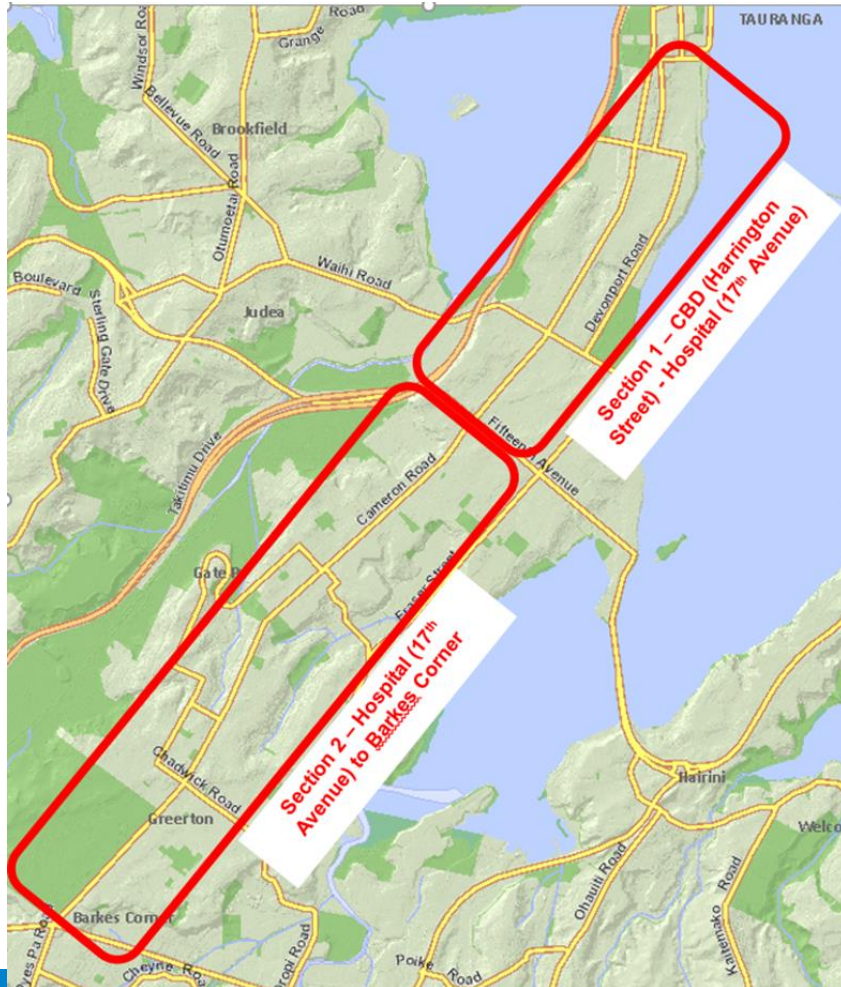


Tauranga City

TCC - Public Transport infrastructure update

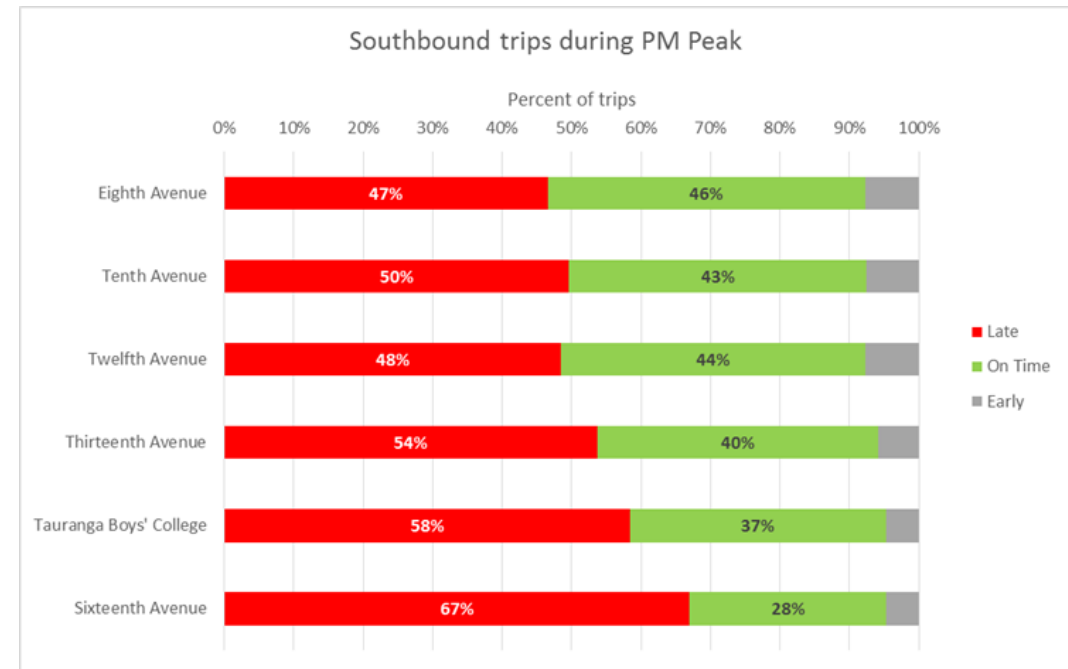
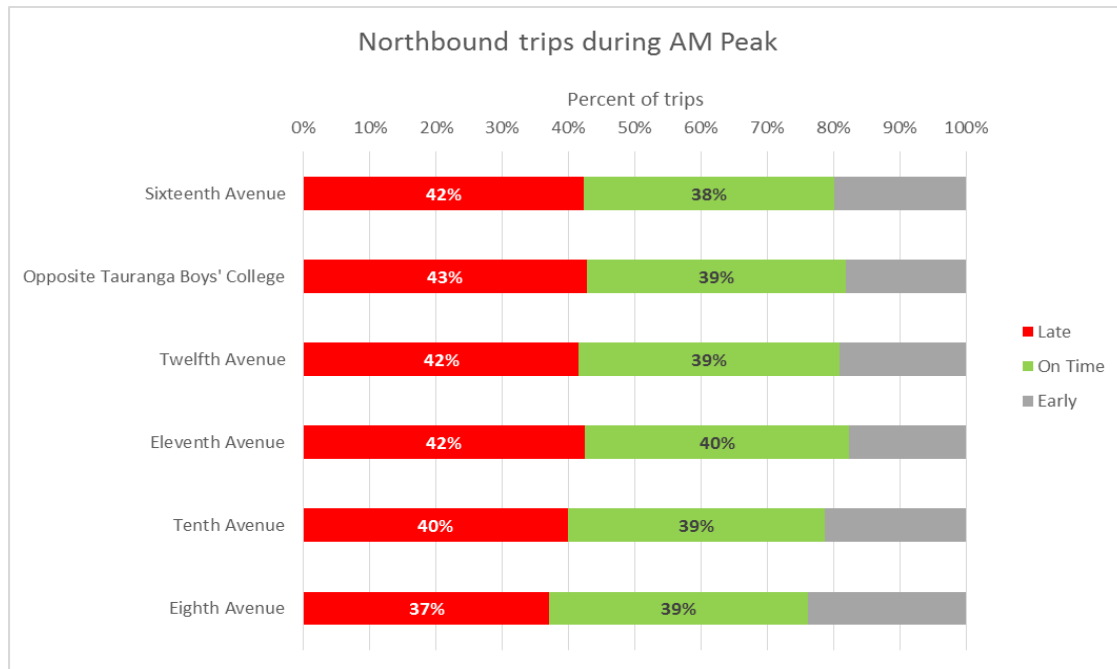
- General update
- PT priority and multi-modal projects
- Interchanges
- Smaller scale and general roll out
- Going forward

Cameron Road – Scope (short-term)

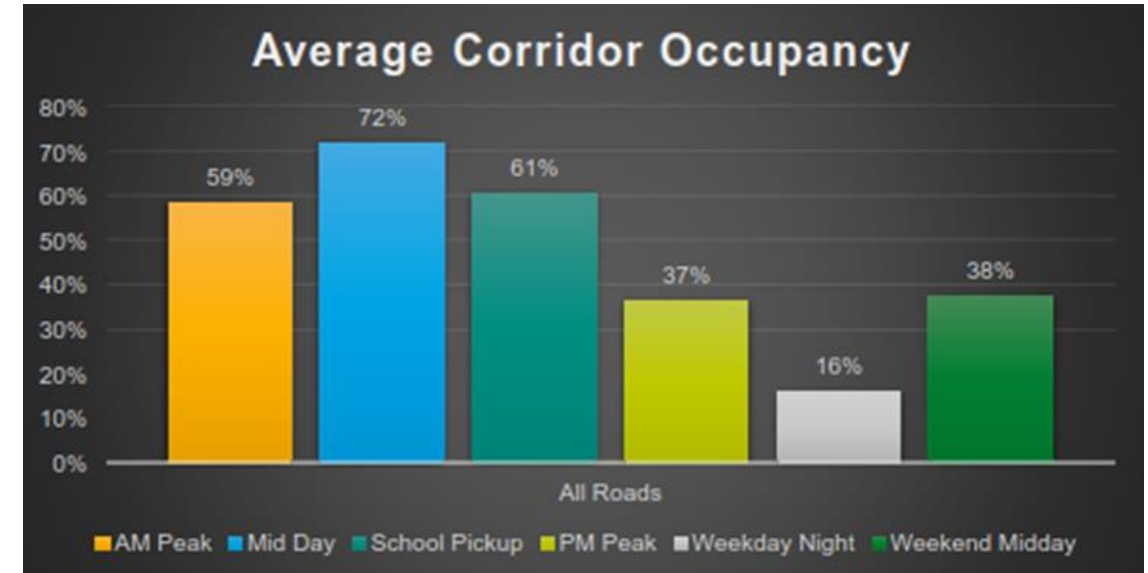
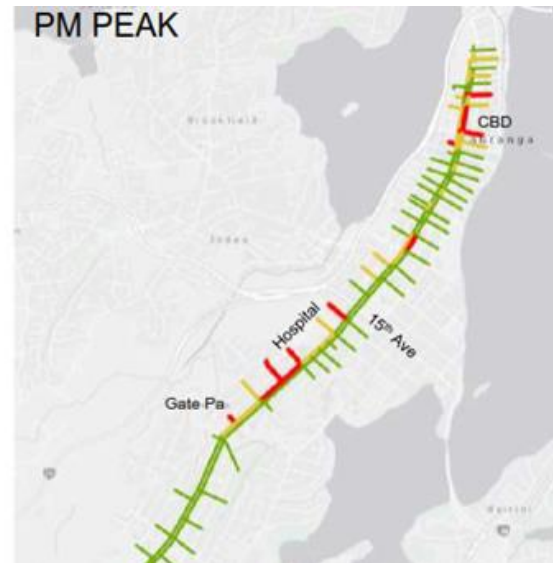
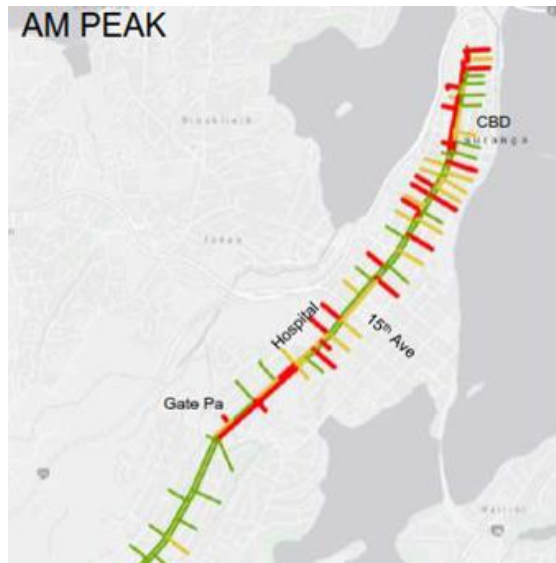


- Traffic signal phasing
- Traffic signal priority and queue jump
- Peak time clearways
- **Removal of traffic lane for bus lane**
- **Removal of traffic lane for T3/T2 lane**
- Consolidation of side street movements
- Improving the environment and facilities for people walking
- Improving facilities for people on bikes
- Providing additional car parking capacity close to Cameron Road

Cameron Road - Reliability



Cameron Road - Parking



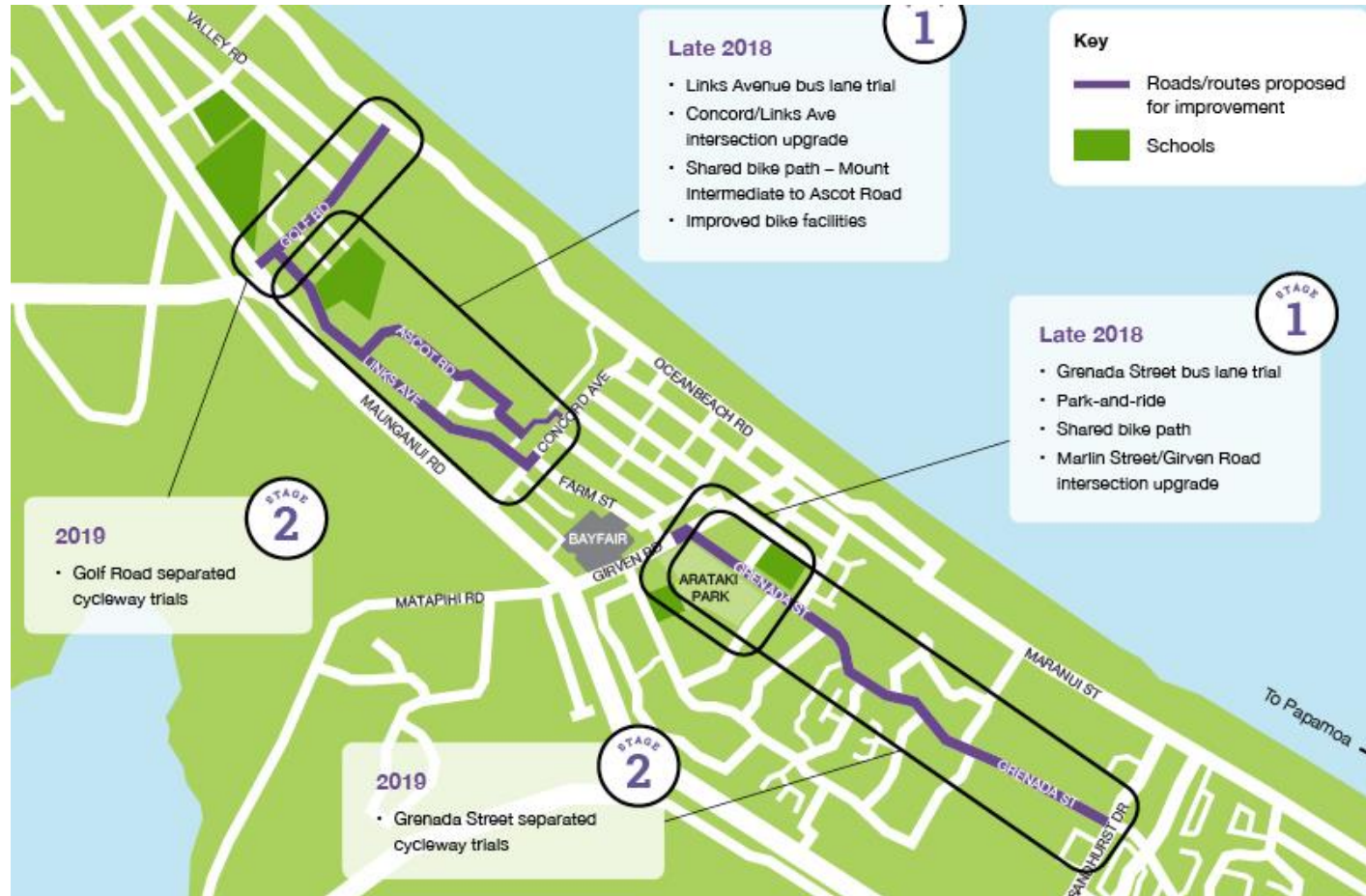
Legend:

- 0% - 50% Occupied
- 51% - 85% Occupied
- >86% Occupied

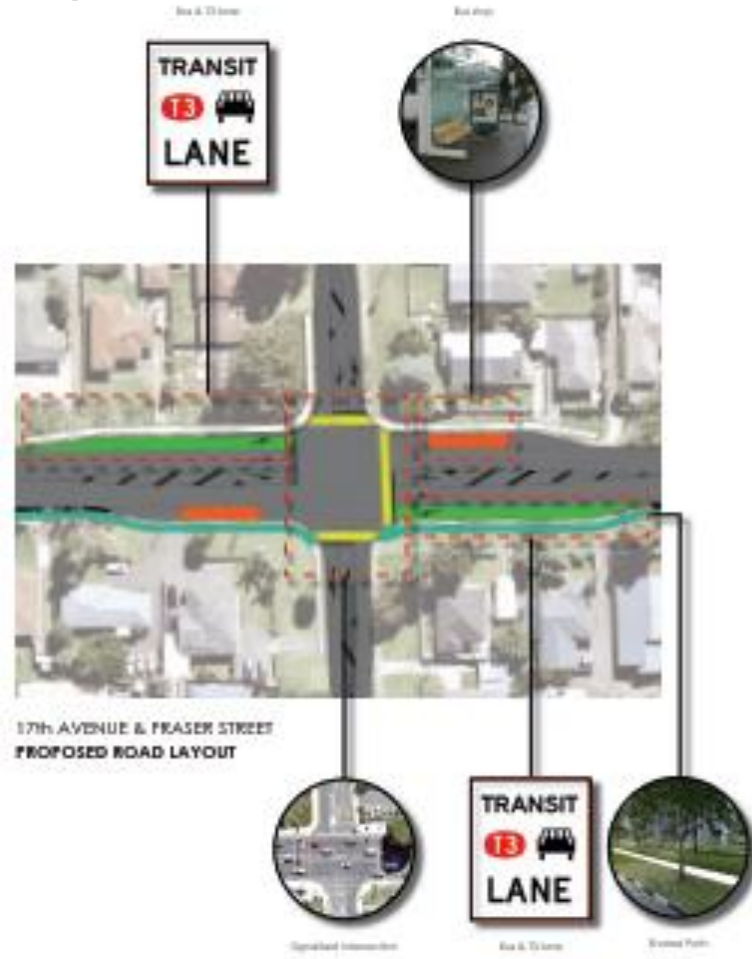
Cameron Road – Next steps

- Focus on areas of worst delay for clearway options
- Corridor needs to be considered more holistically for walking, cycling and access management
- Preliminary Design scheduled to begin from September – until early 2020 subject to Council agreement
- Focus on engagement

Arataki multi-modal



15th Ave



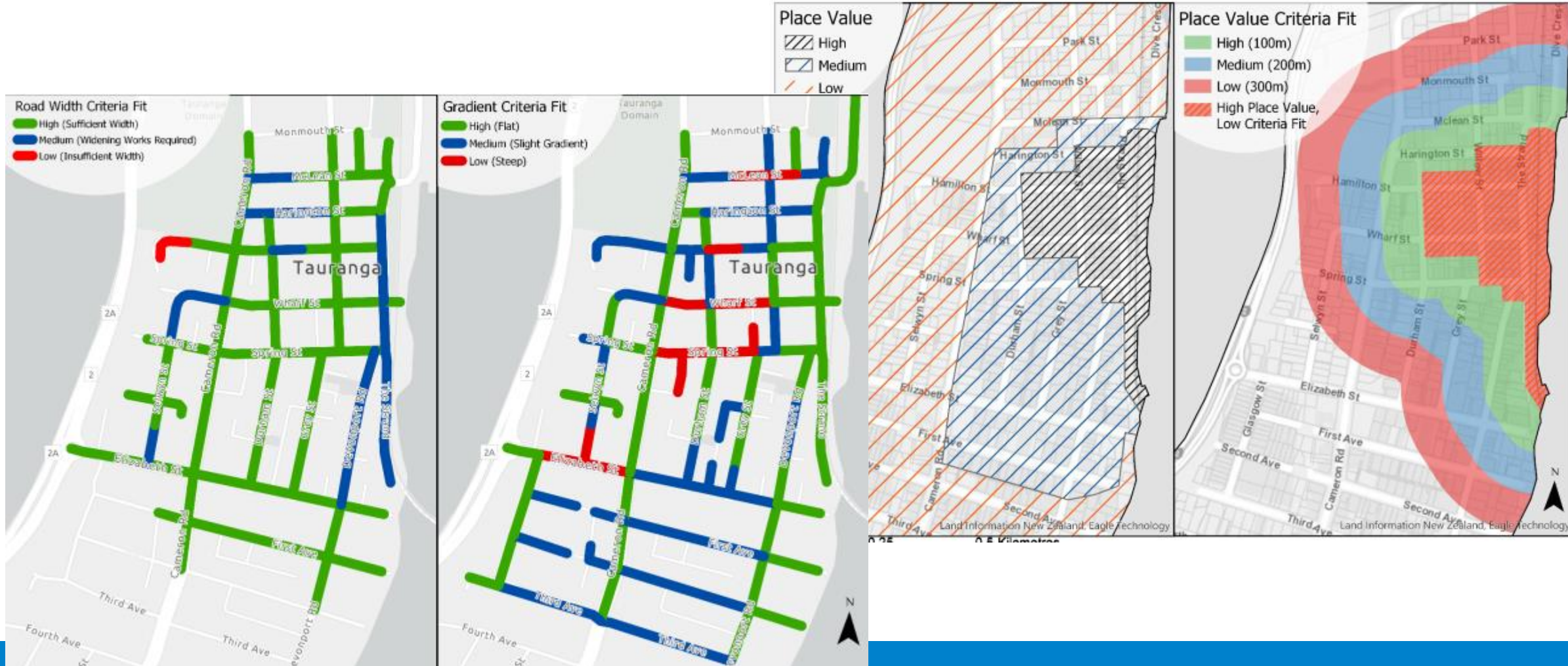
Maunganui Road



Interchange Boardings 10 Dec 2018 to 30 Jun 2019



City Centre Bus Interchange



Arataki Bus Facility



Suburban interchanges

- Polytech
- Hairini
- Greerton
- Mount Drury
- Brookfield

Stops and shelters



Improving access

- Including crossings, new paths and wider safety projects
 - Clarke Street
 - Cameron Road (on hold)
 - Links Ave
 - Oropi
 - Cambridge Road
 - Maunganui Road
 - Marine Parade

Summary of progress

Project	PTB year (const)	Status	Complex	Public interest	BCA funding	Land
Cameron Road	2019/20	Planning	High	High	Yes	No
Tauriko	2018	Delivered ST / Planning LT	Low	Medium	Yes	Future
Polytech	2019	Delivered	Medium	Low	No	No
Hairini	2019	On hold	High	Medium	Yes	Yes
Greerton*	2022	Short term delivered	Medium	High	No	No
Bayfair	Pre PTB	Planning	Medium	High	Yes	Yes
Improving stops	2024	Underway	Low	Low/medium	No	No
Mount Drury	DBC	Constructed, needs shelter	Low	Low	No	No
Pedestrian improvements	DBC	Underway	Medium	Medium	No	No
Brookfield	DBC	Temporary delivered. Long-term planning	High	Medium	Yes	Yes
New stops/shelters	DBC	On track	Low-med	Medium (shelters)	No	No

Additional planning underway

- New growth areas – structure plans and Te Tumu multi-modal
- Workplace travel plans
- PT design guidelines
- Parking Strategy
- Park n ride

Moving Forward

- Continuing to progress projects
- Early and meaningful engagement
- Pro-active planning
- Sharing data and information
- PT Implementation plan
- Monthly operational meetings
- UFTI



Tauranga City