

# Regional Land Transport Plan Annual Report Card 2016/17



## THE REPORT AT A GLANCE

### TARGETS

ECONOMIC PERFORMANCE		
	TARGET	ACTUAL
Regional GDP (\$b)	↑ 11.93	13.18 ✓
Contribution to national GDP (%)	↑ 5.1	5.2 ✓
Network reliability (mins delay/km)	↓ 0.36	ND
Rail freight (billion net tonne kms)	↑ 1.006	1.360 ✓

SAFETY		
	TARGET	ACTUAL
Road trauma (deaths & serious injuries)	↓ 181	165 ✓
Alcohol (factor in deaths & serious injuries)	↓ 41.6	40.6 ✓
Speed (factor in deaths & serious injuries)	↓ 41.2	35.8 ✓
Rail trauma (deaths & injuries)	↓ 2.0	ND

LAND USE AND TRANSPORT INTEGRATION		
	TARGET	ACTUAL
Person kilometres (million kms/year)	B	3,095
Public transport (trips/person/year)	↑ 11.0	8.9 ✗
Distance cycled (kms/person/year)	B	78
Time walking (hours/person/year)	B	31

ENERGY EFFICIENCY		
	TARGET	ACTUAL
Energy use (person kms/litre of fuel)	B	4.76
Single occupancy vehicles (kms/person/year)	↓ 2,600	ND

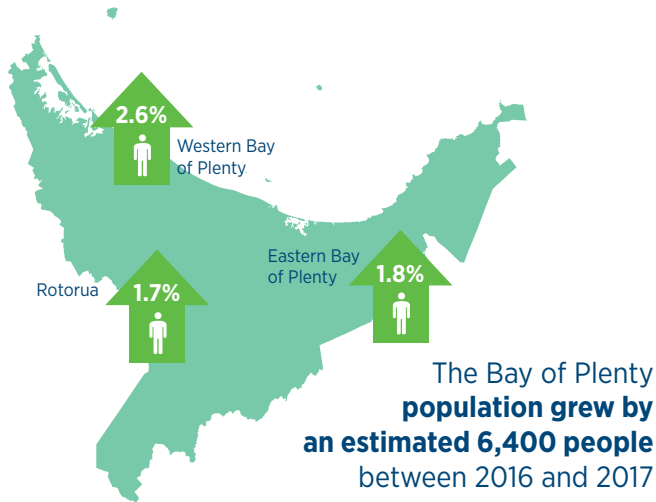
ACCESS AND RESILIENCE		
	TARGET	ACTUAL
Closure of strategic road routes (hours/year)	↓ 48	70 ✗
Public transport reliability (% buses on time)	-	ND
Sustainable mode share (% trips)	B	12

AFFORDABILITY		
	TARGET	ACTUAL
Local road condition/COST (% smooth travel exposure/\$ lane km)	↑ 88.7/↑ 6,392	ND
SH condition/cost (% smooth travel exposure / \$ lane km)	↑ 97.35/↑ 24,398	98.25/ND P
Rail track quality (track quality index)	↑ 28.2	28.4 ✓

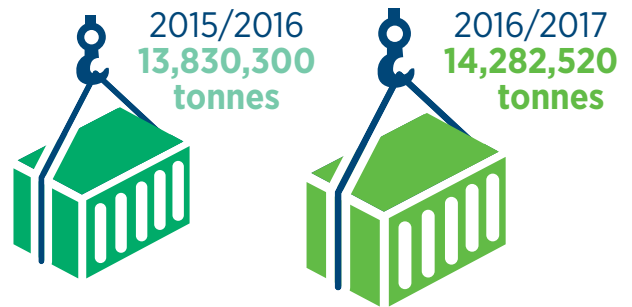
ENVIRONMENTAL SUSTAINABILITY		
	TARGET	ACTUAL
Travel on unsealed roads (vehicle kms travelled/day)	↓ 36,878	ND
Particulate matter (number of days PM10 levels exceed NES)	↓ 12	12 ✗
Nitrogen dioxide (NO <sub>2</sub> micrograms/m <sup>3</sup> air - Tauranga/Rotorua)	↓ 24.48/18.5	26.33/21.00 ✗

**B** = New Baseline **ND** = No/insufficient data **P** = Partially achieved

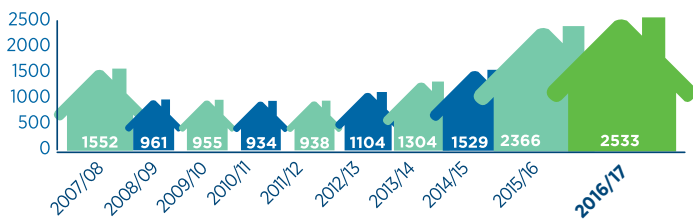
# DEMAND INDICATORS



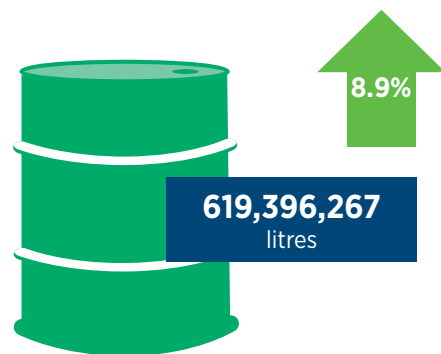
Export volumes loaded at the Port of Tauranga increased 3.3% in the last year



Housing development is maintaining current growth trends

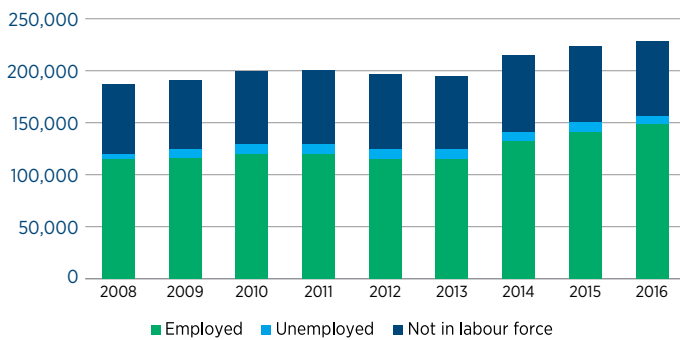


Fuel consumption continues to increase



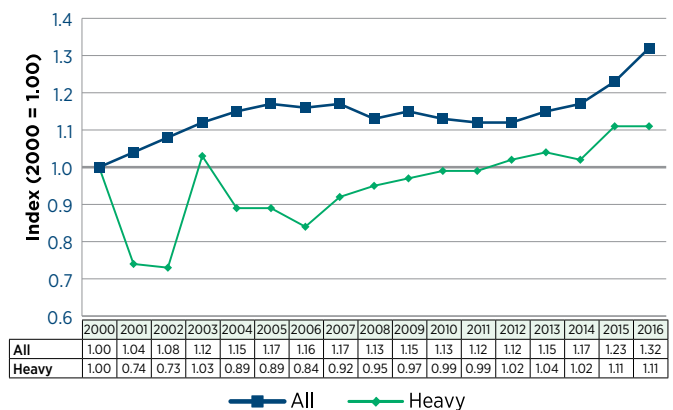
57% of the fuel sold was **DIESEL**

The employed labour force continues to grow



Overall traffic volumes on state highways continued to increase

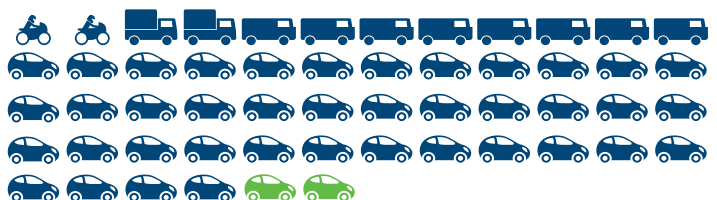
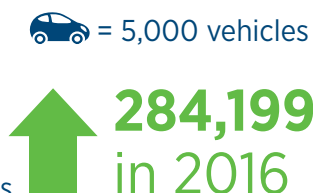
Indexed Bay of Plenty State Highway Traffic Volumes (continuously monitored sites)



The region's vehicle ownership rate is **0.88** per person - up from **0.86** the previous year

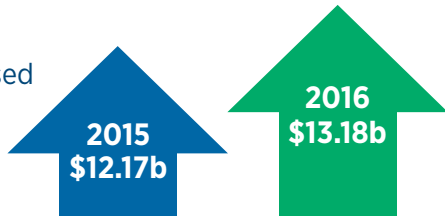


The region's road vehicle fleet has increased by over 14,000 in the past year - mainly light commercial vehicles and cars

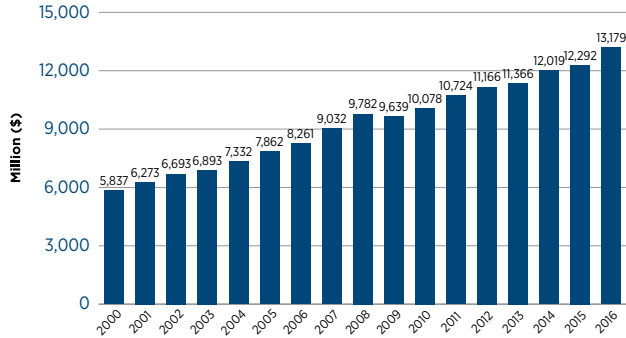


# ECONOMIC PERFORMANCE

Regional GDP increased by **8.3%**



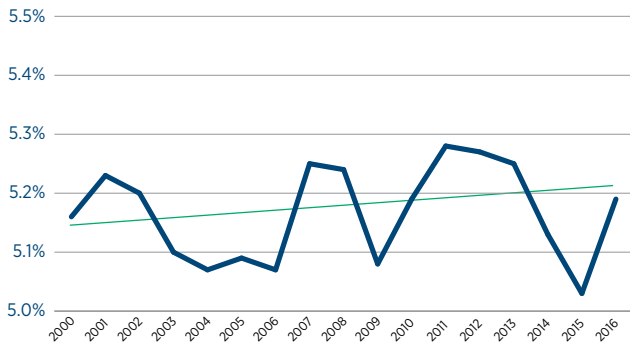
**Regional Gross Domestic Product**



**Year Ended March**

Regional GDP as a proportion of national GDP **increased**

**Regional GDP (% of National GDP)**



**Year Ended March**

**1.36 billion**

net tonne kilometres of **rail freight** was moved to/from or within the region



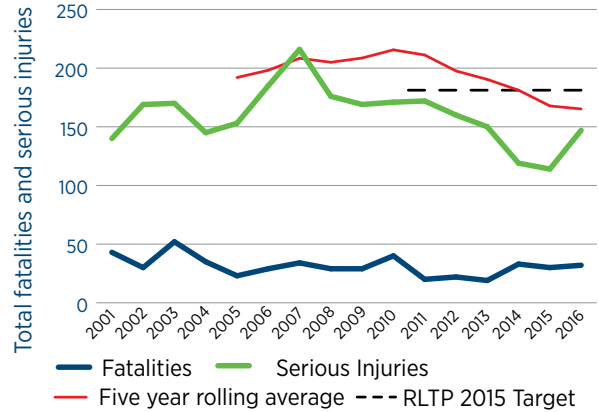
**Approximately 460,000 containers** were carried on the East Coast Main Trunk Rail Line



A decrease of **4.6%** from the previous year

# SAFETY

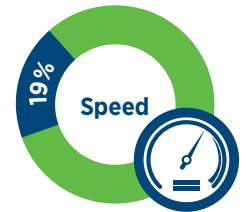
**Fatalities and serious injuries increased** on our roads between 2015 and 2016, while the five year average remained about the same



**Alcohol** contributed to **34%** of all deaths and serious injuries.



**Speed** contributed to **19%** of all deaths and serious injuries.

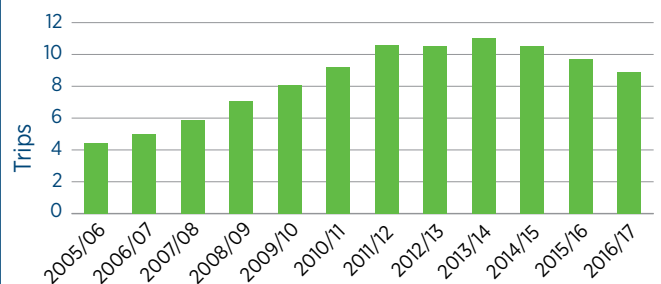


# LAND USE & TRANSPORT INTEGRATION

The annual **number of trips on public transport** per person has continued to trend downwards



**Annual bus trips per person, Bay of Plenty**



## ACCESS & RESILIENCE

National and regional **strategic road routes** were closed for a total of **70 hours** in 2016

**96%** of these closures were for **crashes or road incidents**



## AFFORDABILITY

**Track quality** on the East Coast Main Trunk rail line **declined**



## ENVIRONMENTAL SUSTAINABILITY

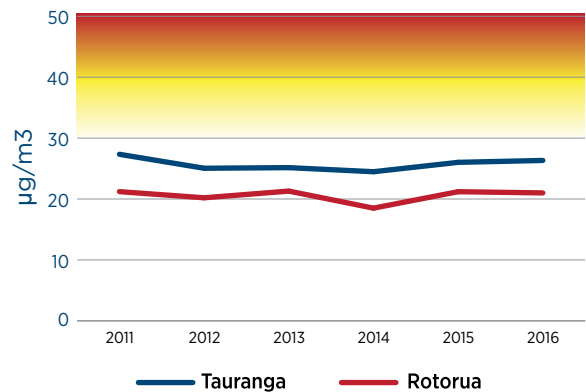
Levels of particulate (**PM10**) in Rotorua **exceeded the national environmental standard on 12 days** in 2016 (transport accounts for around 17% of PM10 emissions in Rotorua)



Average annual **nitrogen dioxide** concentrations were **26.33 micrograms/m<sup>3</sup>** of air across 6 sites in Tauranga (concentrations above 30 micrograms may have adverse effects on human health)



**Average annual NO<sub>2</sub> concentrations**



For more information visit our website [www.boprc.govt.nz](http://www.boprc.govt.nz), call 0800 884 880 or email [info@boprc.govt.nz](mailto:info@boprc.govt.nz)