

RCEP data as of published date October 2018

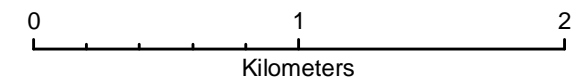
**Projection Information**  
This map is in the New Zealand Transverse Mercator and uses BOPLASS 2014 - 2017 aerial photography.

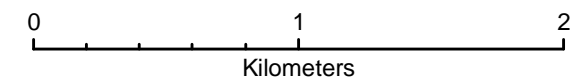
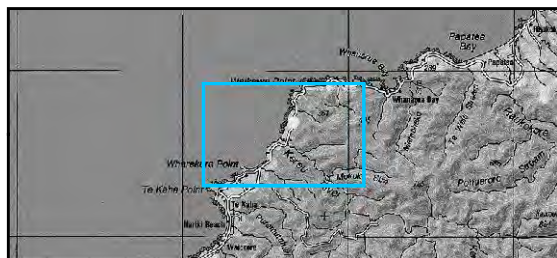
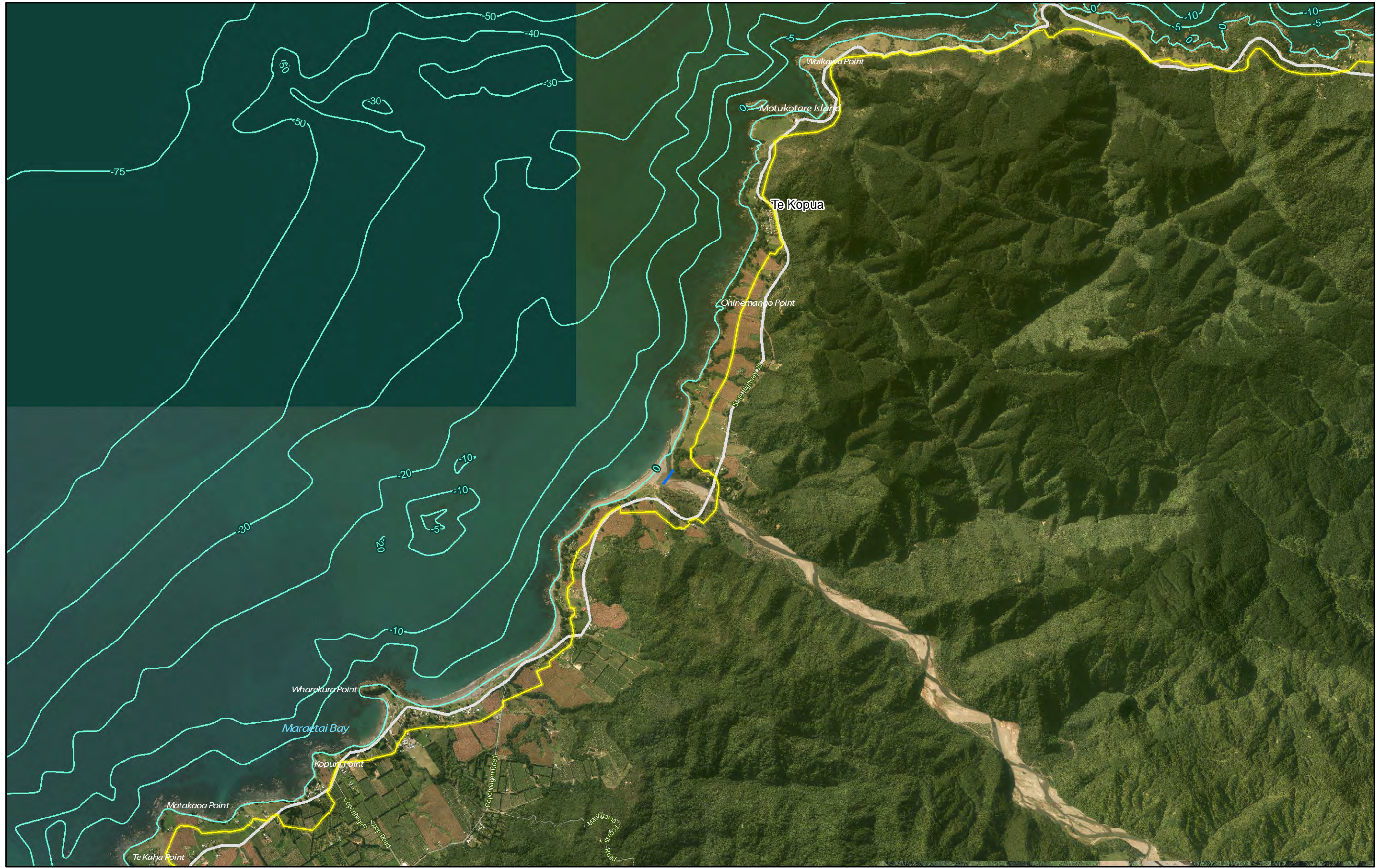
**Copyrights**  
© Sourced from Land Information New Zealand data.  
© Crown Copyright Reserved.  
© Bay of Plenty Regional Council



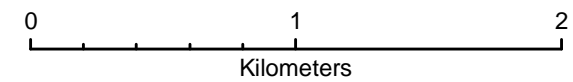
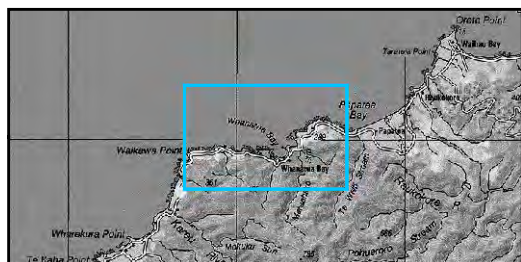
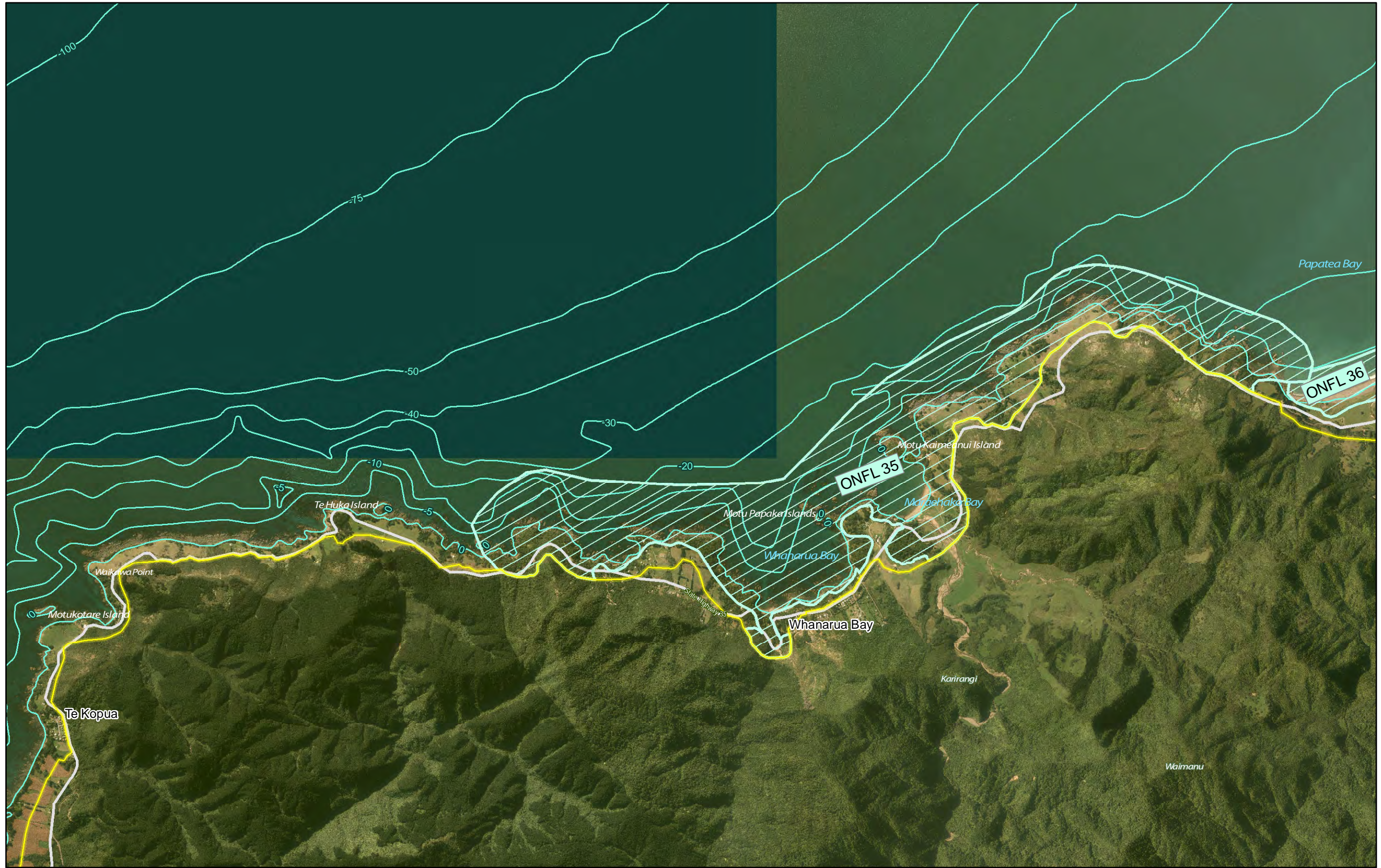
### 34b\_Wharakura/Kereu/Waikawa

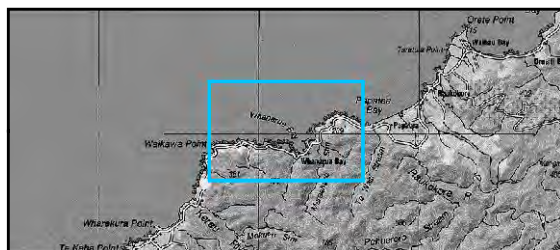
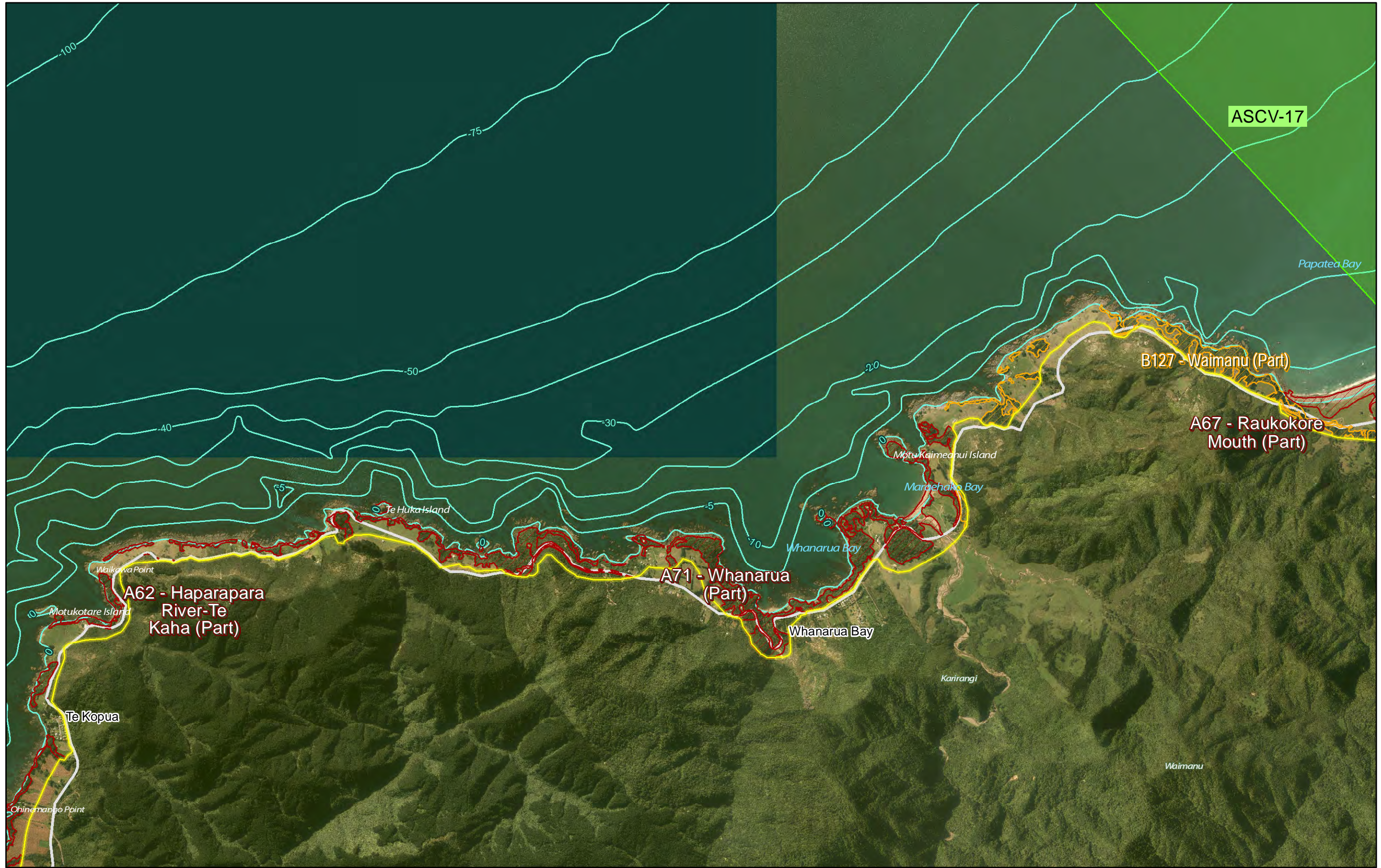
Pre-Operative Regional Coastal Environment Plan - Ecological\_2018











RCEP data as of published date October 2018

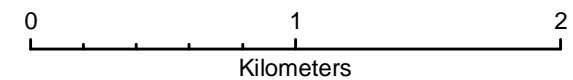
**Projection Information**  
This map is in the New Zealand Transverse Mercator and uses BOPLASS 2014 - 2017 aerial photography.

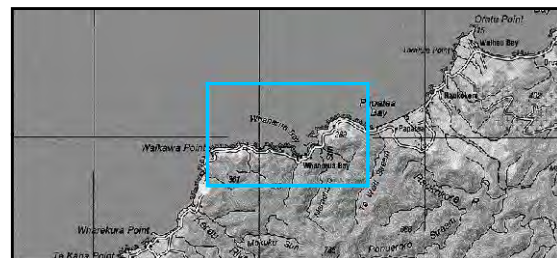
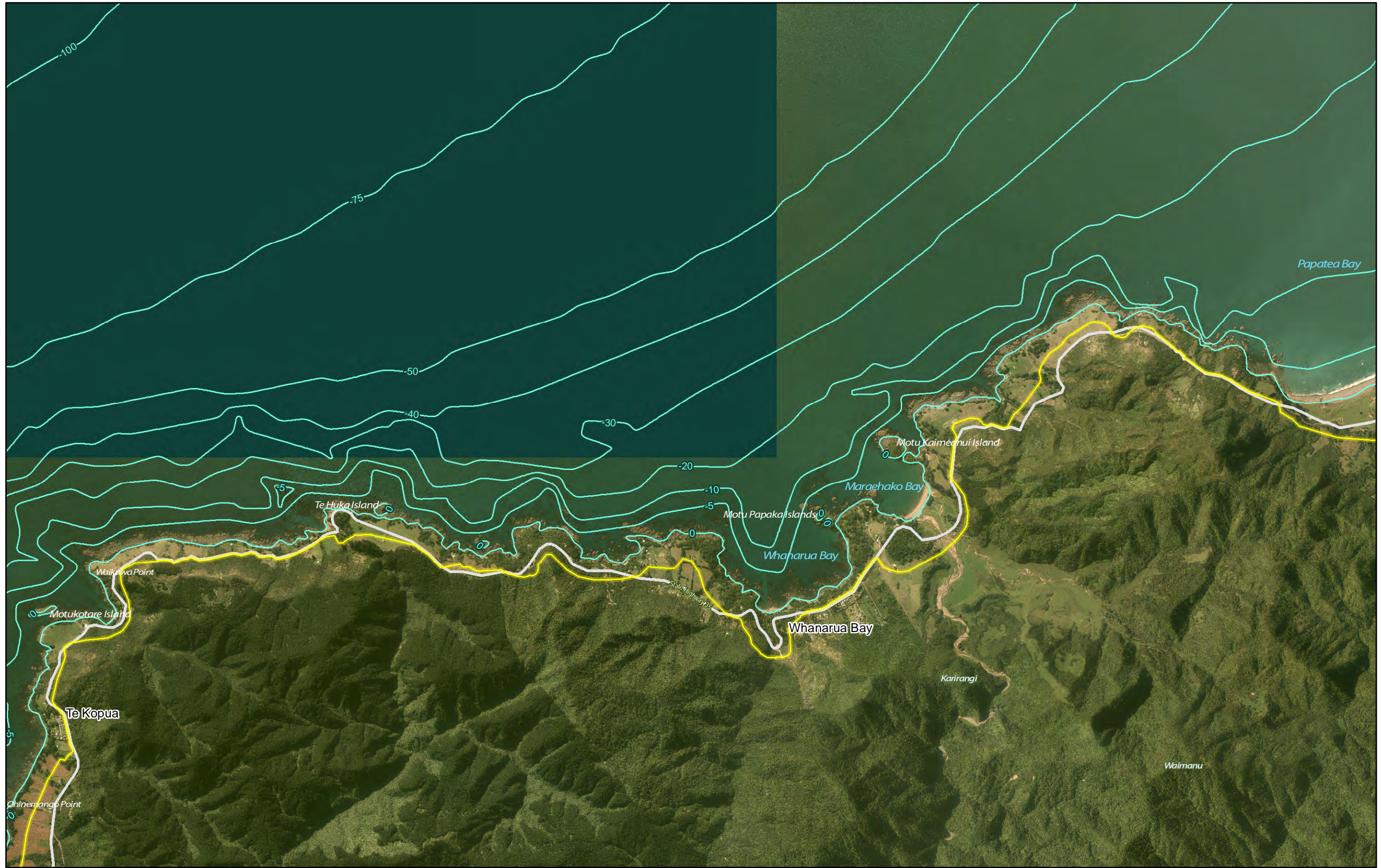
**Copyrights**  
© Sourced from Land Information New Zealand data.  
© Crown Copyright Reserved.  
© Bay of Plenty Regional Council



### 35b\_Whanarua Bay/Papatea Bay

Pre-Operative Regional Coastal Environment Plan - Ecological\_2018





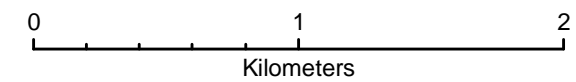
RCEP data as of published date October 2018

**Projection Information**  
This map is in the New Zealand Transverse Mercator and uses BOPLASS 2014-17 aerial photography.

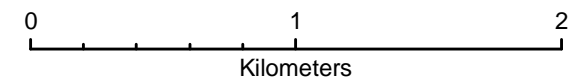
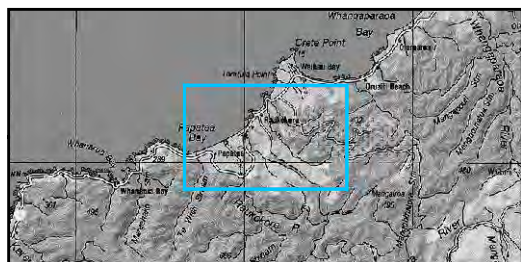
**Copyrights**  
© Sourced from Land Information New Zealand data.  
CROWN COPYRIGHT RESERVED.  
© Bay of Plenty Regional Council

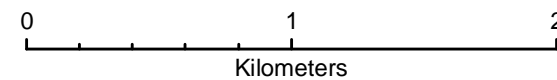
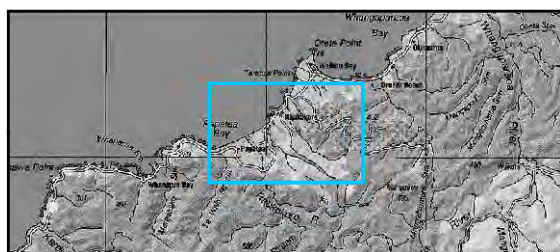
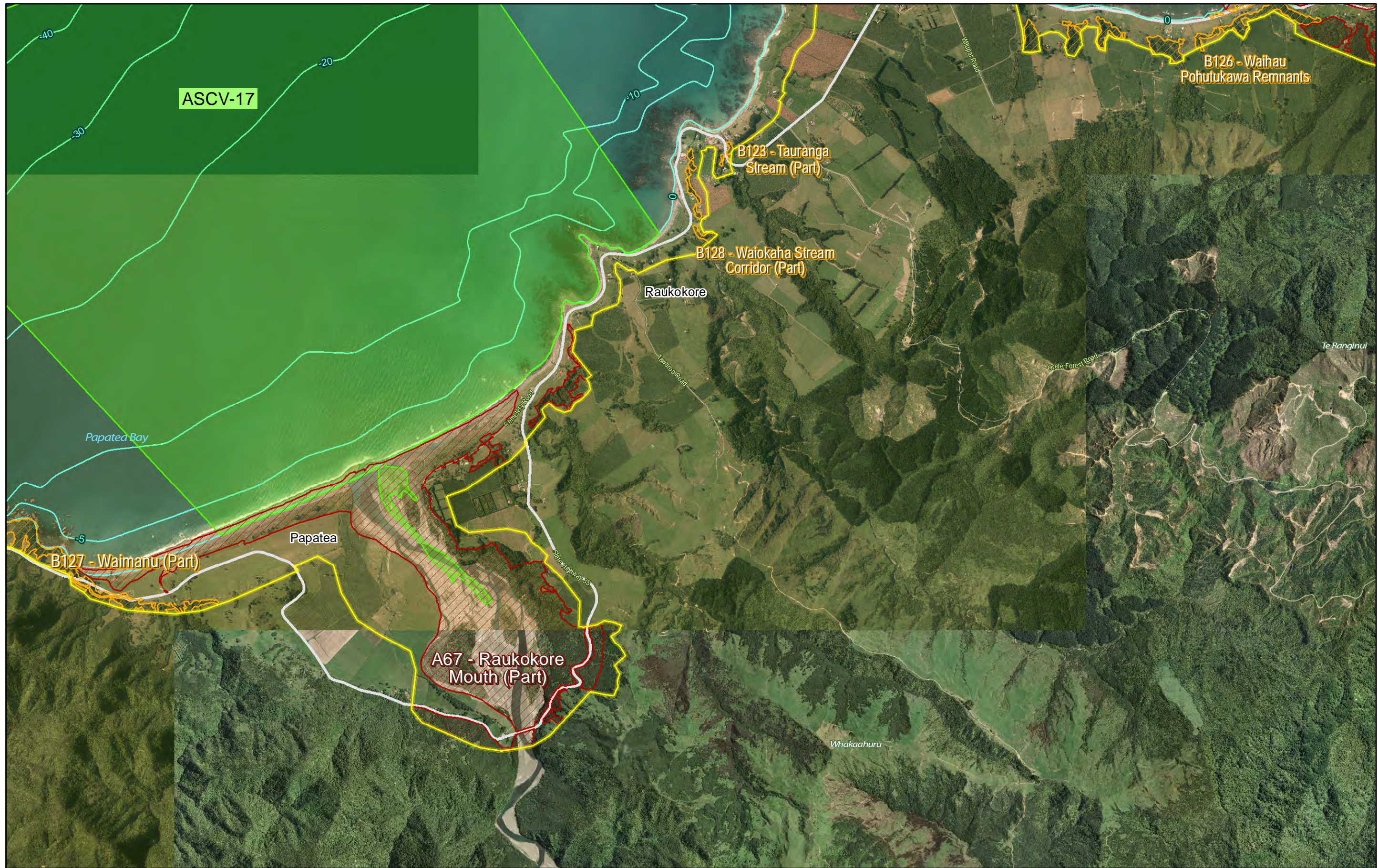


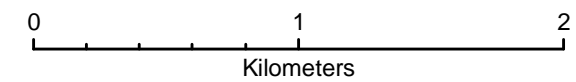
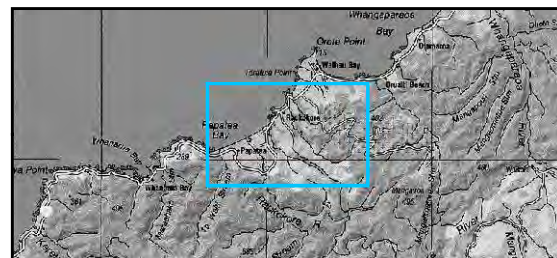
**35c\_ Whanarua Bay/Papatea Bay**  
Pre-Operative Regional Coastal Environment Plan - Use\_2018

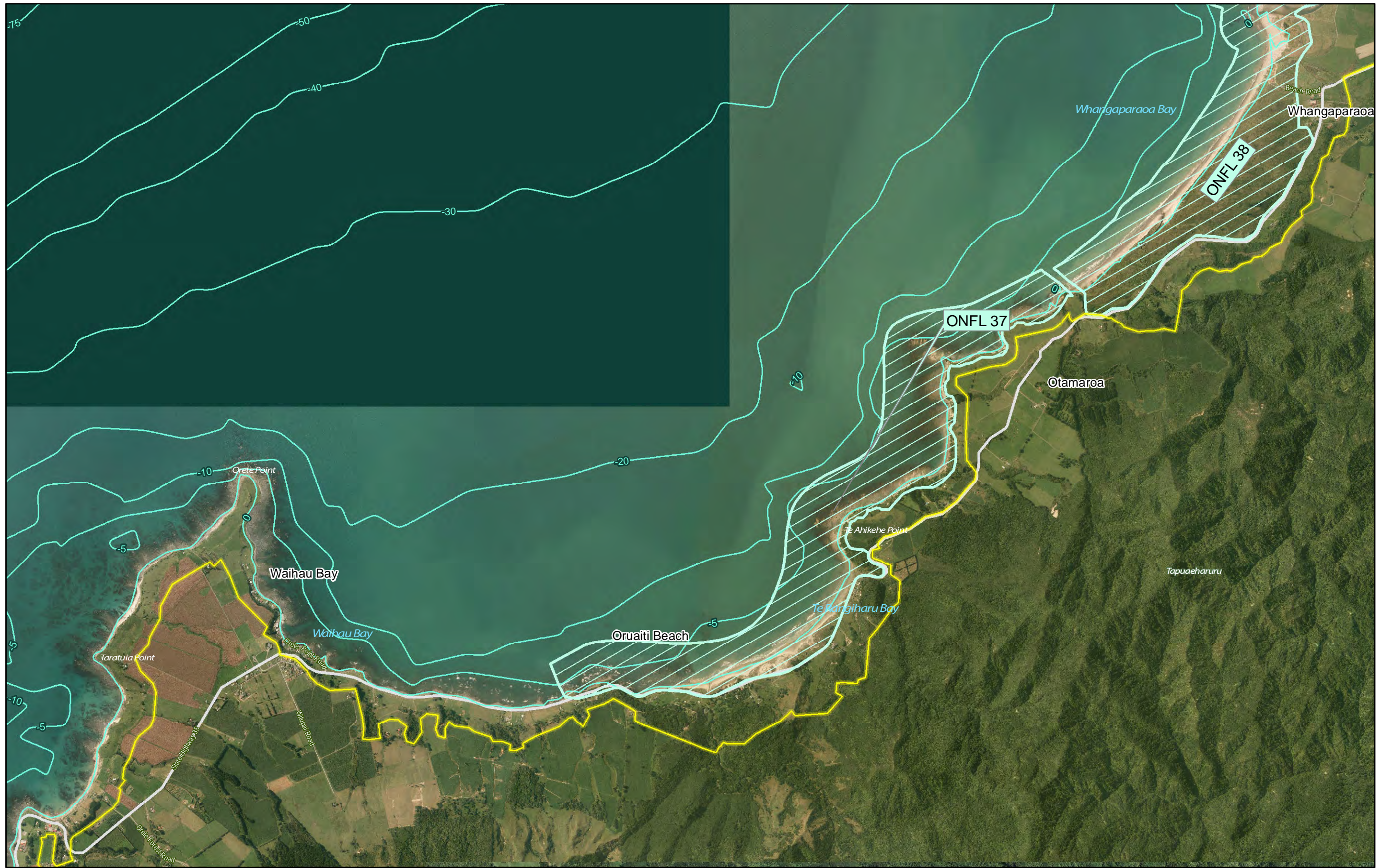


GIS\_459085  
Printed: 18/10/2018

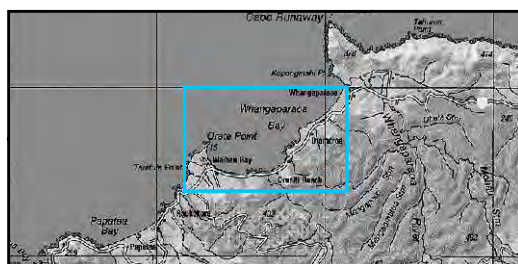








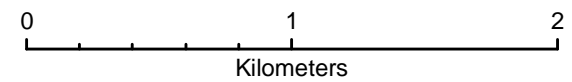
**37a\_ Orete Point/Whangaparaoa Bay**  
Pre-Operative Regional Coastal Environment Plan - Landscape\_2018



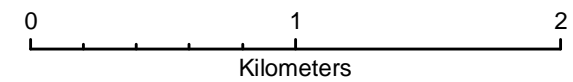
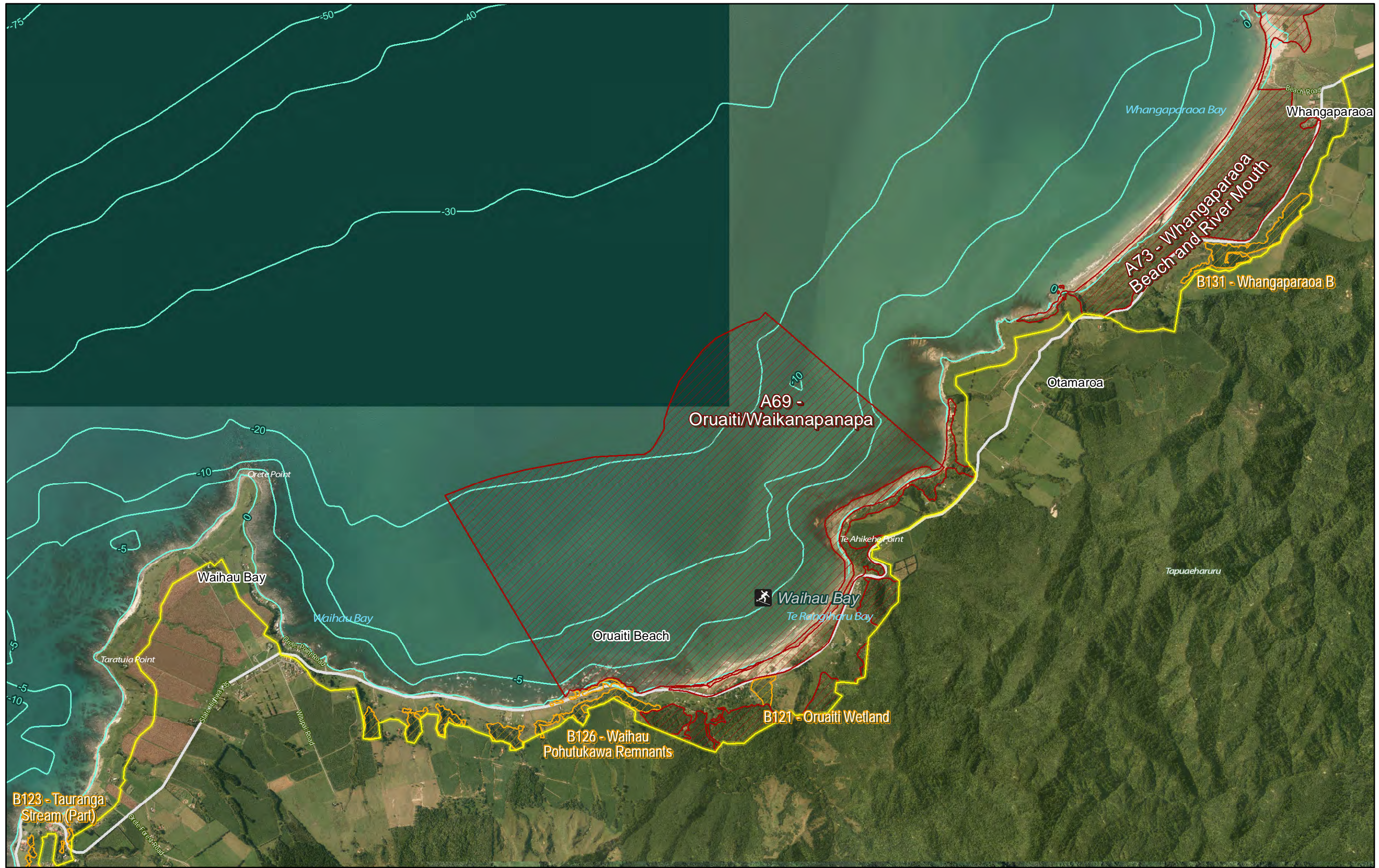
RCEP data as of published date October 2018

**Projection Information**  
This map is in the New Zealand Transverse Mercator and uses aerial photography from BOPLASS 2014-17.

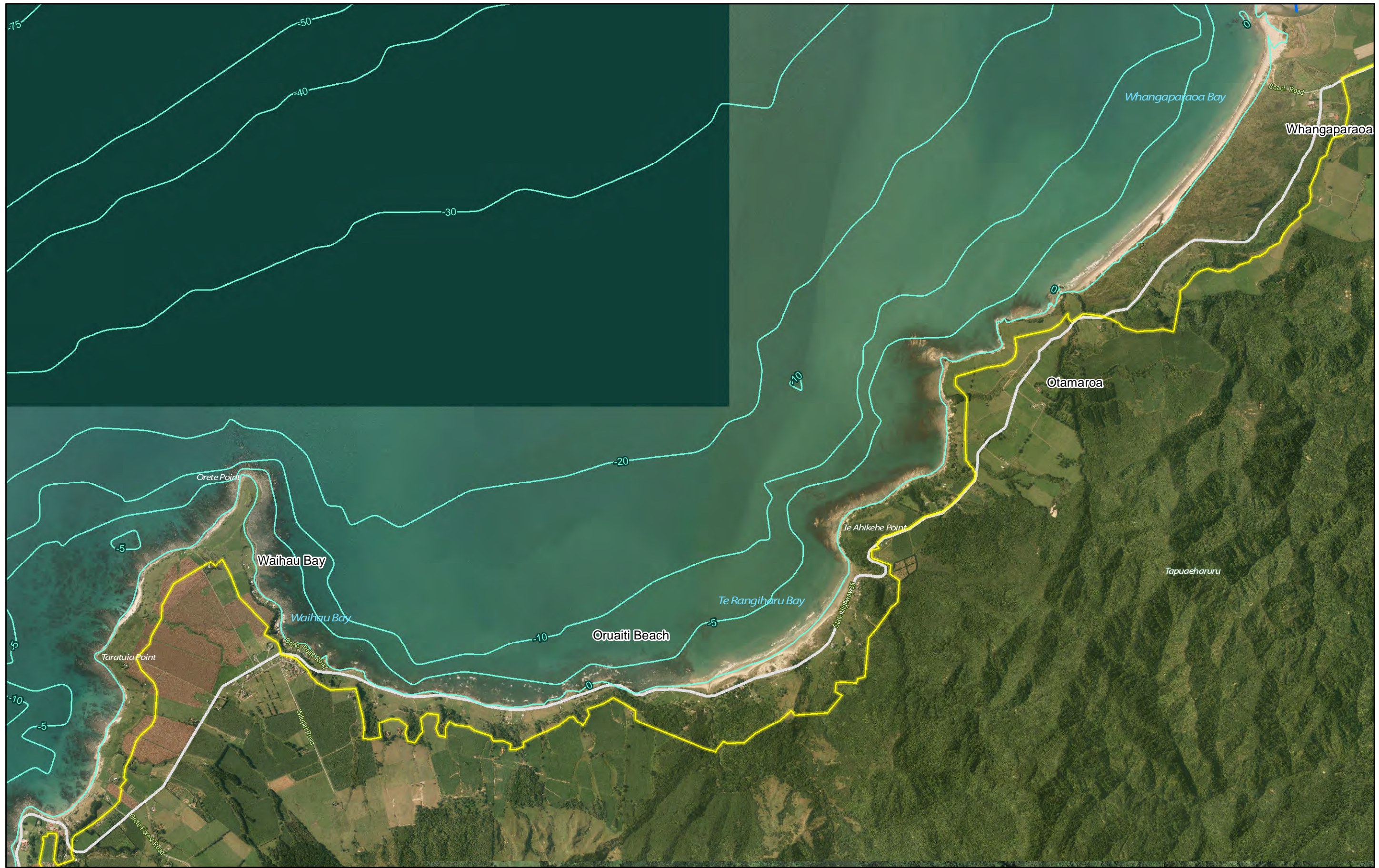
**Copyrights**  
© Sourced from Land Information New Zealand data.  
© Crown Copyright Reserved.  
© Bay of Plenty Regional Council



GIS\_459085  
Printed: 18/10/2018







### 37c\_ Orete Point/Whangaparaoa Bay

Pre-Operative Regional Coastal Environment Plan - Use\_2018

