

Tapuika Reserve Maps





Legend

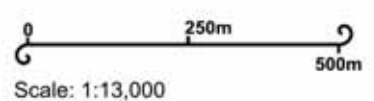
-  Te Paieka - Cadastral Parcel Boundary
-  Stream/river
-  Tramping Track
-  NZ Cadastral Parcels
-  Road
-  District Boundary
-  Conservation Reserve

Data Source: DOC Public Conservation Areas (2009) - Department of Conservation, NZ
Cadastral Polygons - Land Information NZ, 2012
Aerial Photography- BOPLASS Ltd.

Te Paieka

Area: 1 ha
 Located: In Mangorewa Forest
 Map #: tpk_14a - May 2014

Info: Te Paieka is surrounded by 1100+ ha of indigenous forest which forms part of the Mangorewa Forest - a conservation reserve managed by the Department of Conservation.
District: Rotorua District
Legal Description: Sec 13 Blk III Rotorua SD





Te Matai Forest conservation reserve

Te Whaititiri Pā

Te Matai Road

WBOPDC

RDC

Mangorewa River

Legend

-  Te Whaititiri Pā - Cadastral Parcel Boundary
-  Stream/river
-  NZ Cadastral Parcels
-  Road
-  District Boundary
-  Conservation Reserve

Data Source: DOC Public Conservation Areas (2009) - Department of Conservation, NZ
Cadastral Polygons - Land Information NZ, 2012
Aerial Photography- BOPLASS Ltd.

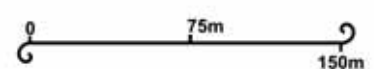
Te Whaititiri Pā

Area: 5 ha
Located: In Te Matai Forest
Map #: tpk_14b - May 2014

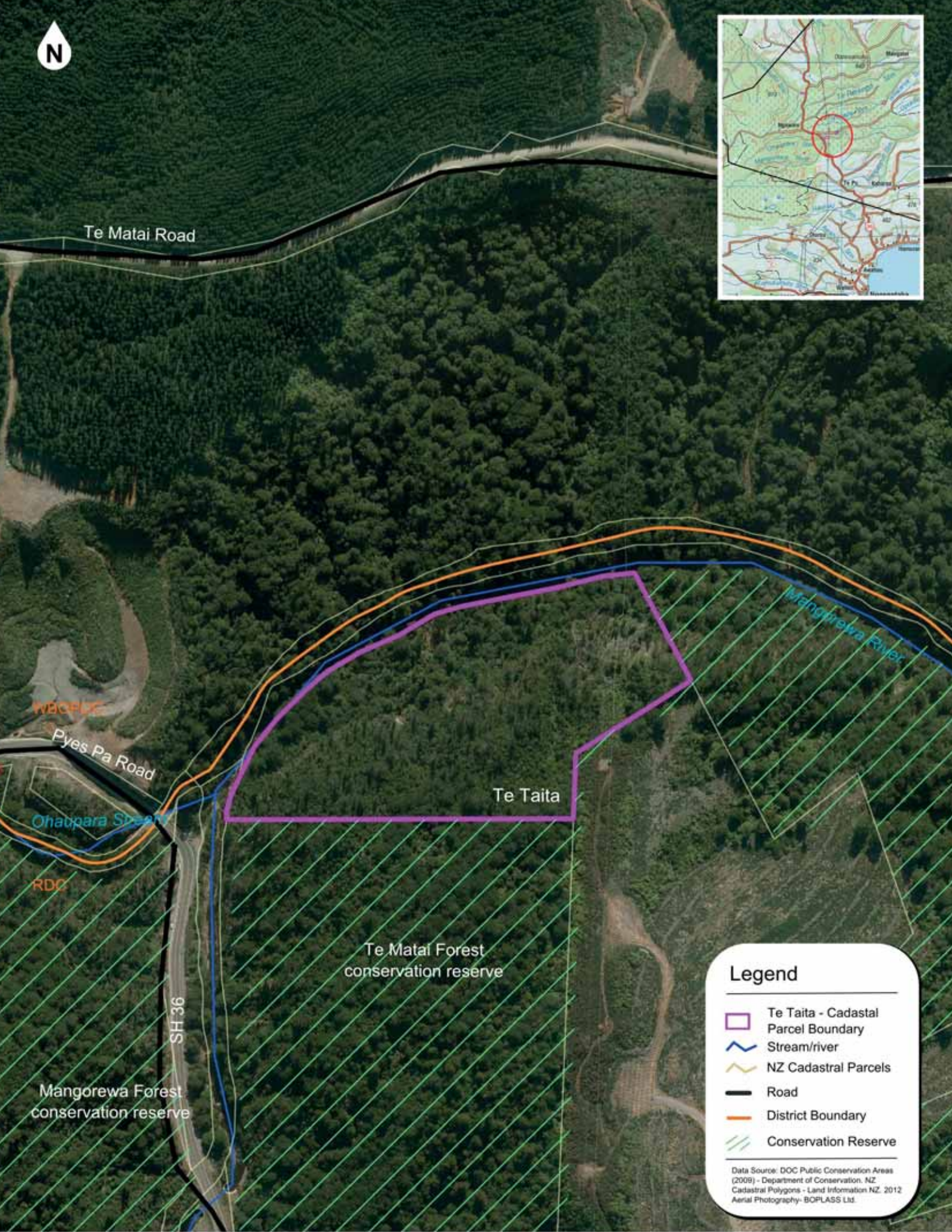
Info: Te Whaititiri Pā is surrounded by 1289 ha of indigenous forest which forms part of the Te Matai Forest - a conservation reserve managed by the Department of Conservation.

District: Rotorua District

Legal Description: Pt Sec 8 Blk IV Rotorua SD



Scale: 1:4000



Legend

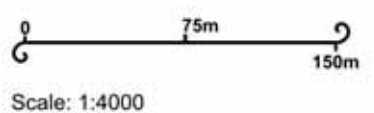
- Te Taita - Cadastral Parcel Boundary
- Stream/river
- NZ Cadastral Parcels
- Road
- District Boundary
- Conservation Reserve

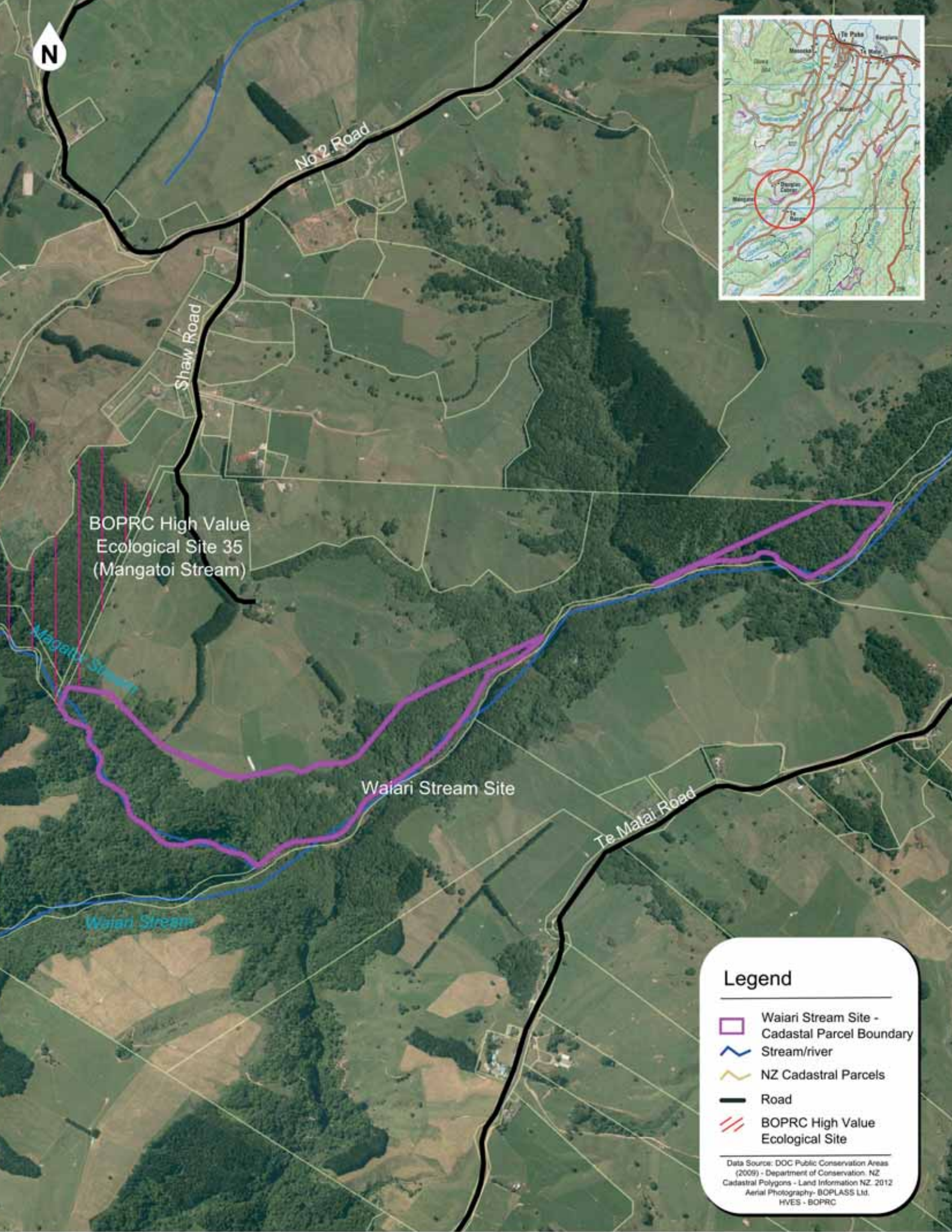
Data Source: DOC Public Conservation Areas (2009) - Department of Conservation, NZ
Cadastral Polygons - Land Information NZ, 2012
Aerial Photography- BOPLASS Ltd.

Te Taita

Area: 6.0 ha
 Located: In Te Matai Forest
 Map #: tpk_14c - May 2014

Info: Te Taita is surrounded by 1289 ha of indigenous forest which forms part of the Te Matai Forest - a conservation reserve managed by the Department of Conservation.
District: Rotorua District
Legal Description: Pt Sec 21 Blk IV Rotorua SD





BOPRC High Value Ecological Site 35 (Mangatoi Stream)

Waiari Stream Site

Te Matai Road

Legend

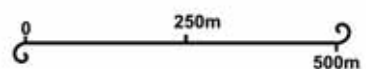
-  Waiari Stream Site - Cadastral Parcel Boundary
-  Stream/river
-  NZ Cadastral Parcels
-  Road
-  BOPRC High Value Ecological Site

Data Source: DOC Public Conservation Areas (2009) - Department of Conservation, NZ Cadastral Polygons - Land Information NZ, 2012 Aerial Photography - BOPPLASS Ltd, HVES - BOPRC

Waiari Stream Site

Area: 28.8 ha
 Located: Waiari Stream, Shaw Road
 Map #: tpk_14d - May 2014

Info: Waiari Stream Site contains indigenous forest along the riparian margin of Waiari Stream. A BOPRC High Value Ecological Site is located to the east of the site.
District: Western Bay of Plenty
Legal Description: Pt Te Puke



Scale: 1:13000



Kaharoa Forest conservation reserve

BOPRC High Value Ecological Site 37 (Lower Mangorewa Gorge)

Te Weta Pā

Ohara Stream

Legend

- Te Weta Pā - Cadastral Parcel Boundary
- Stream/river
- NZ Cadastral Parcels
- BOPRC High Value Ecological Site
- Conservation reserve

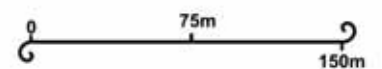
Data Source: DOC Public Conservation Areas (2009) - Department of Conservation, NZ Cadastral Polygons - Land Information NZ, 2012 Aerial Photography- BOPLASS Ltd. HVES - BOPRC

Te Weta Pā

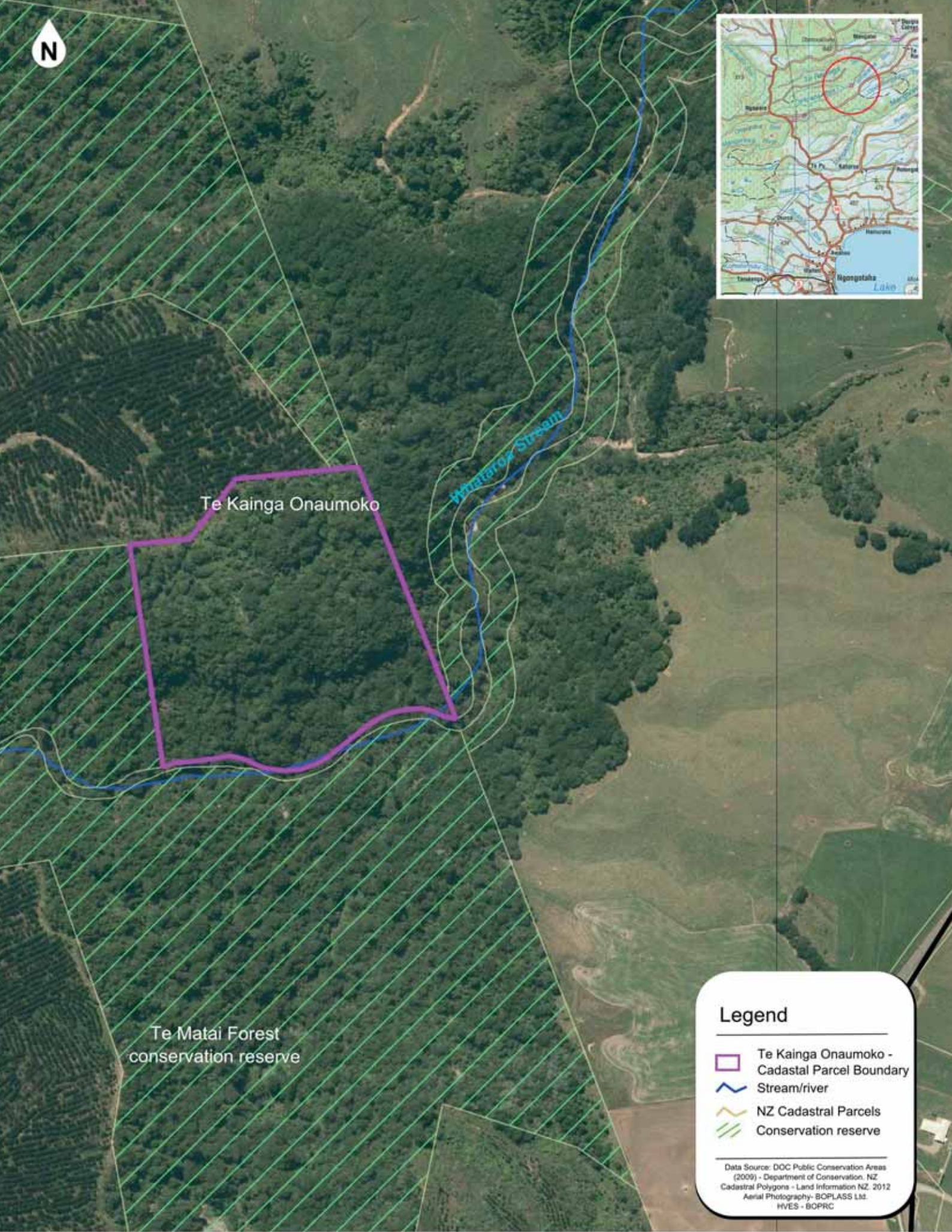
Area: 1.2 ha
Located: Kaharoa Forest
Map #: tpk_14e - May 2014

Info: Te Weta Pā is surrounded by 876 ha of the indigenous Kaharoa Forest, managed as a conservation reserve by the Department of Conservation. A BOPRC High Value Ecological Site is located to the west of the site. Kaharoa Kokako Trust monitor/protect Kokako in the Kaharoa Forest.

District: Western Bay of Plenty Legal Description: Pt 1 Blk XIV Maketu SD



Scale: 1:4000







Te Kainga Onaumoko

Whitara Stream

Te Matai Forest
conservation reserve

Legend

-  Te Kainga Onaumoko - Cadastral Parcel Boundary
-  Stream/river
-  NZ Cadastral Parcels
-  Conservation reserve

Data Source: DOC Public Conservation Areas (2009) - Department of Conservation, NZ
 Cadastral Polygons - Land Information NZ, 2012
 Aerial Photography - BOPLASS Ltd.
 HVES - BOPRC

Te Kainga Onaumoko

Area: 5.0 ha

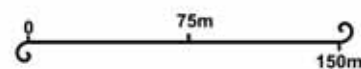
Located: Te Matai Forest

Map #: tpk_14f - May 2014

Info: Te Kainga Onaumoko is part of 1289 ha of indigenous forest which forms part of the Te Matai Forest - a conservation reserve managed by the Department of Conservation.

District: Western Bay of Plenty

Legal Description: Pt Sec 13 Blk XVI Otanewainuku SD



Scale: 1:4000



Otawa Scenic Reserve

Otawa Trig walking track

Te Rāparāpā a Hōā Stream

Omawake Pā

Te Riu o Hua

Demeter. Ro
No. 3. Ro

Legend

-  Omawake Pā & Te Riu o Hua - Cadastral Parcel
-  Stream/river
-  Tramping Track
-  NZ Cadastral Parcels
-  Road
-  Conservation reserve

Data Source: DOC Public Conservation Areas (2009) - Department of Conservation, NZ
 Cadastral Polygons - Land Information NZ, 2012
 Aerial Photography - BOPPLASS Ltd.
 HVES - BOPRC

Omawake Pā & Te Riu o Hua

Area: 5.0 ha & 1.4 ha

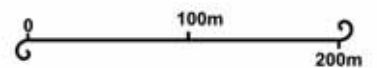
Located: Otawa Scenic Reserve

Map #: tpk_14g - May 2014

Info: Omawake Pā & Te Riu o Hua are surrounded by the Otawa Scenic Reserve managed as a conservation reserve by the Department of Conservation.

District: Western Bay of Plenty

Legal Description: Pt Sec 10,19,21 Block VIII Otanewainuku SD & Pt Sec 21 Block VIII Otanewainuku SD

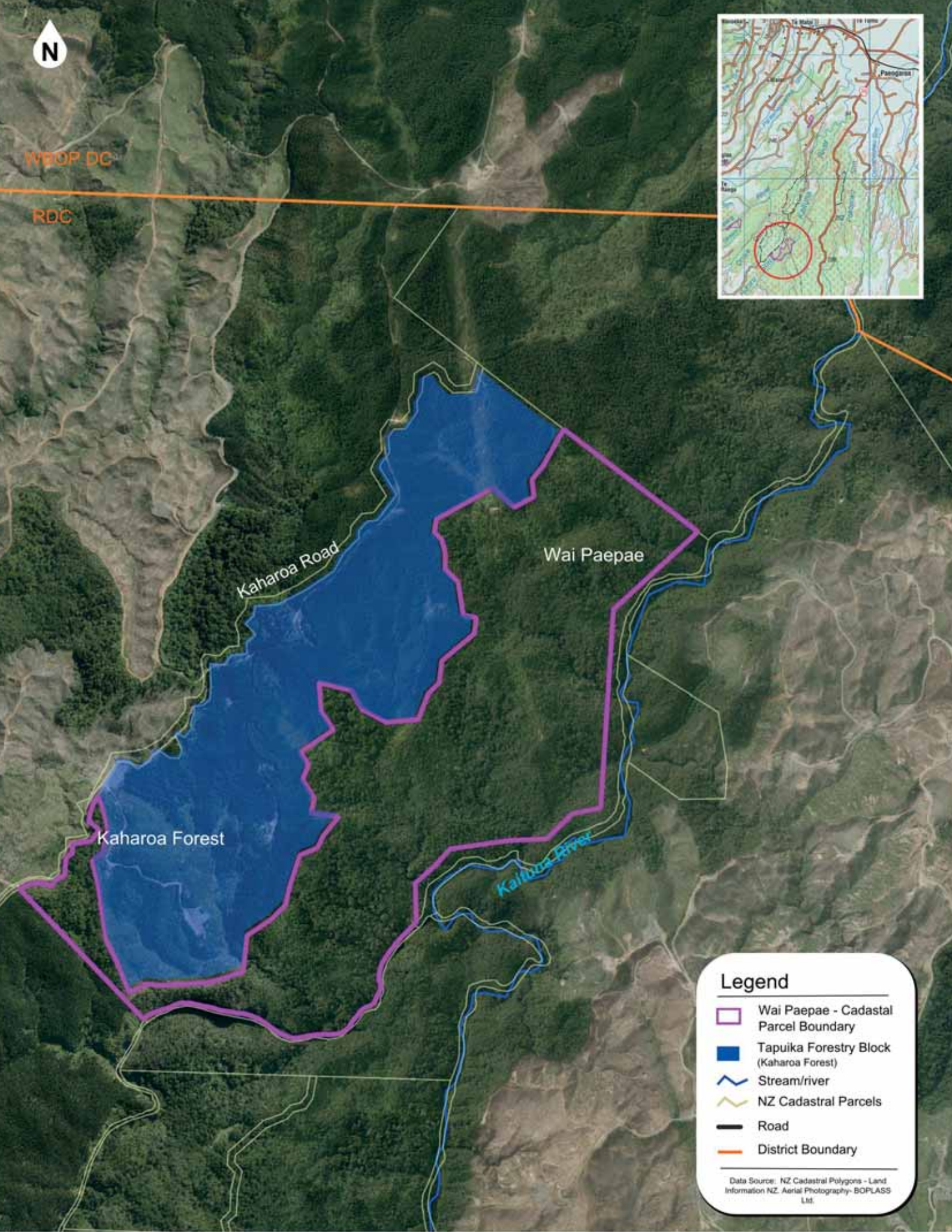


Scale: 1:5000



WBOP DC

RDC



Kaharoa Forest

Kaharoa Road

Wai Paepae

Kaituna River

Legend

-  Wai Paepae - Cadastral Parcel Boundary
-  Tapuika Forestry Block (Kaharoa Forest)
-  Stream/river
-  NZ Cadastral Parcels
-  Road
-  District Boundary

Data Source: NZ Cadastral Polygons - Land Information NZ. Aerial Photography- BOPLASS Ltd.

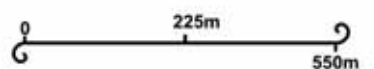
Wai Paepae

Area: 103 ha
 Located: Kaharoa Rd, Kaituna River
 Map #: tpk_14h - May 2014

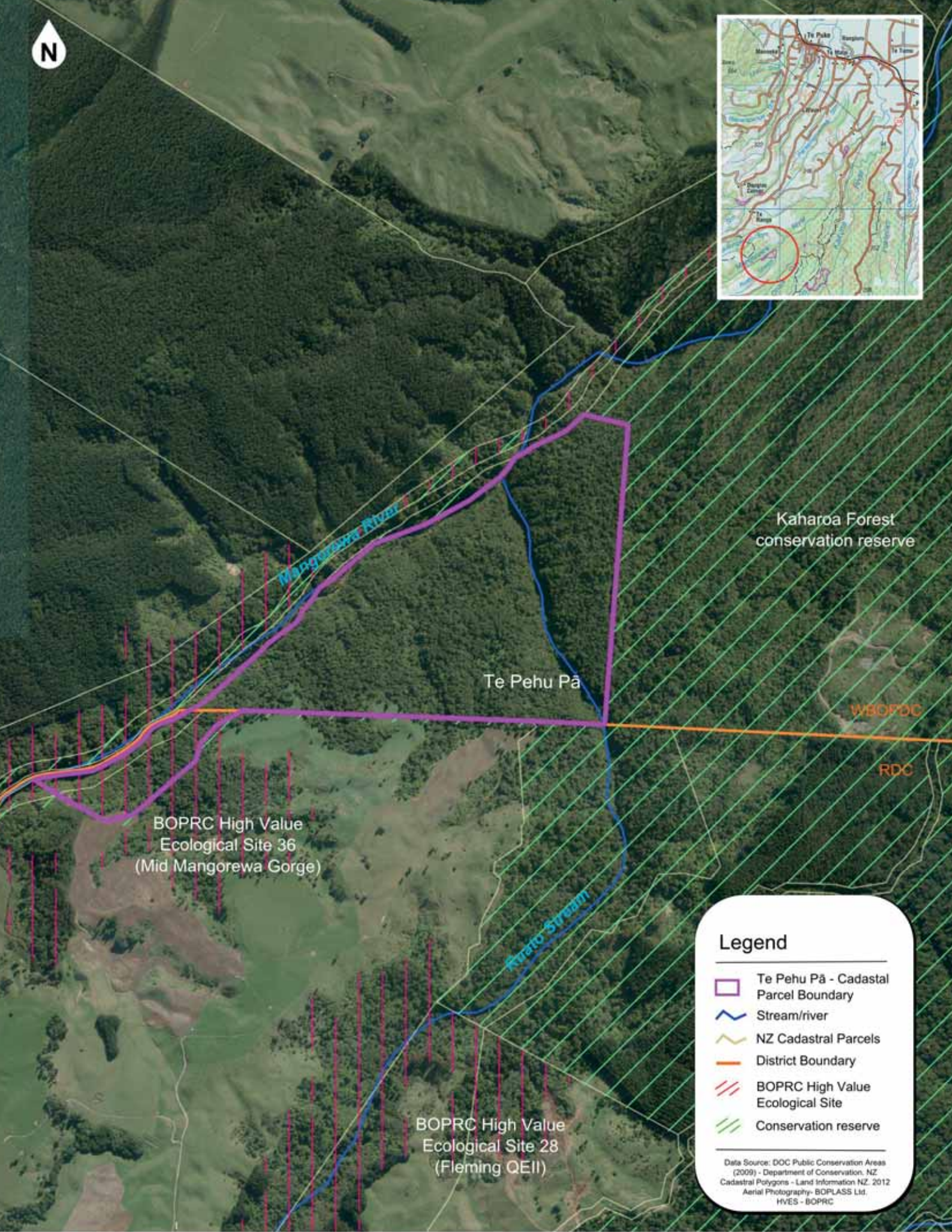
Info: Wai Paepae contains indigenous forest between Kaharoa Road and Kaituna River.

District: Rotorua District

Legal Description: Pt Sec 6 Blk II Rotoiti SD



Scale: 1:14000



Legend

-  Te Pehu Pā - Cadastral Parcel Boundary
-  Stream/river
-  NZ Cadastral Parcels
-  District Boundary
-  BOPRC High Value Ecological Site
-  Conservation reserve

Data Source: DOC Public Conservation Areas (2009) - Department of Conservation, NZ Cadastral Polygons - Land Information NZ, 2012 Aerial Photography - BOPASS Ltd, HVES - BOPRC

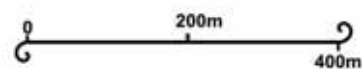
Te Pehu Pā

Area: 34.64 ha
 Located: Mangorewa River, Kaharoa Forest

Map #: tpk_14i - May 2014

Info: Te Pehu Pā is surrounded by 876 ha of the indigenous Kaharoa Forest, managed as a conservation reserve by the Department of Conservation. BOPRC High Value Ecological Sites are located around the site. Kaharoa Kokako Trust monitor/protect Kokako in the Kaharoa Forest.

District: Western Bay of Plenty **Legal Description:** Pt 1 Bk XIV Maketu SD



Scale: 1:10000



Taumata Scenic Reserve







Pyes Pa Road (SH36)



Te Manga o Ngakohua

Taumata Scenic Reserve

Legend

-  Te Manga o Ngakohua - Cadastral Parcel Boundary
-  NZ Cadastral Parcels
-  Road
-  Conservation reserve

Data Source: DOC Public Conservation Areas (2009) - Department of Conservation, NZ
Cadastral Polygons - Land Information NZ, 2012
Aerial Photography: BOPLASS Ltd.

Te Manga o Ngakohua

Area: 3.0 ha

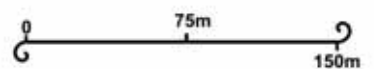
Located: Taumata Scenic Reserve, SH36

Map #: tpk_14j - May 2014

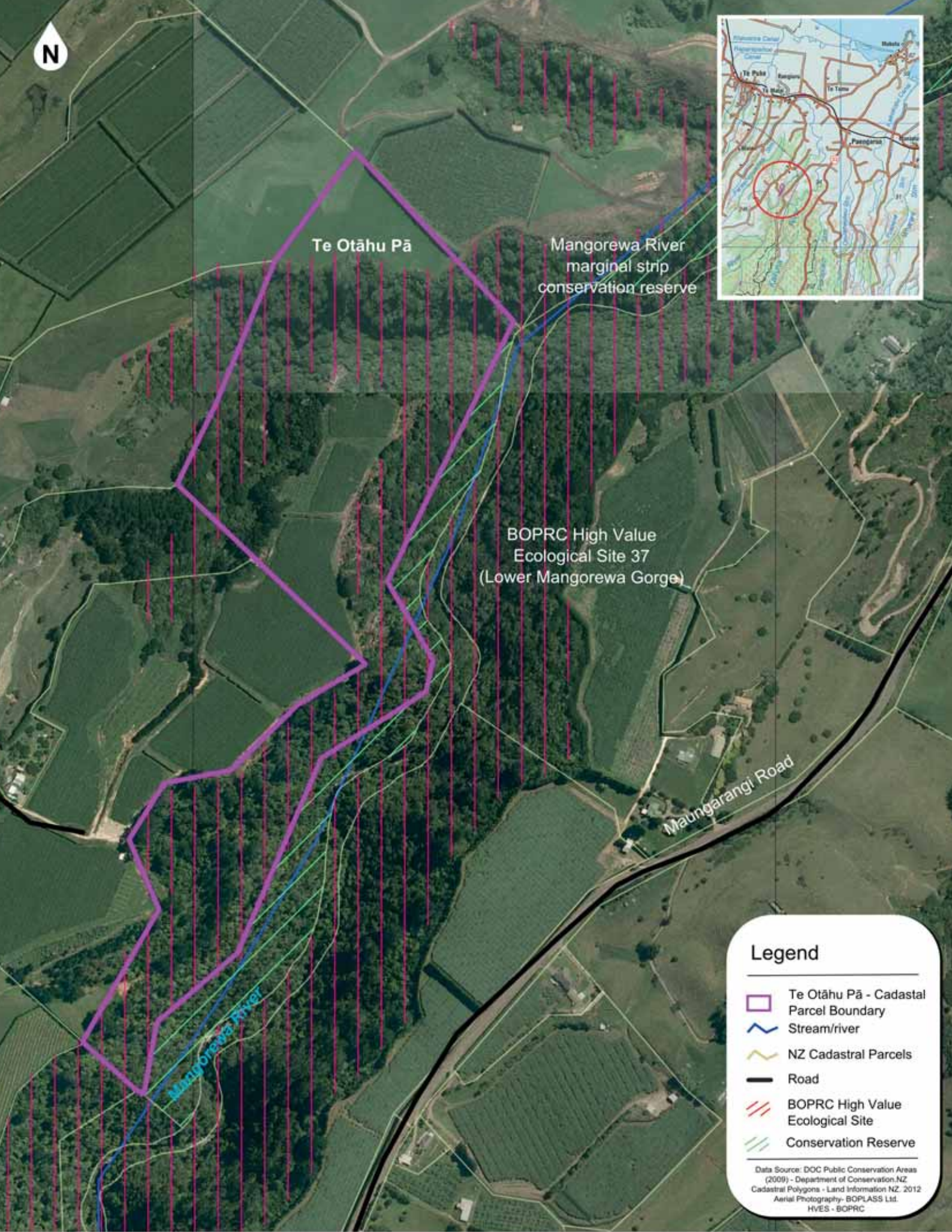
Info: Te Manga o Ngakohua is on the edge of Taumata Scenic Reserve, an indigenous forest reserve managed by the Department of Conservation.

District: Western Bay of Plenty

Legal Description: Sec 7 Blk XV Otawainuku SD



Scale: 1:4000



Te Otāhu Pā



Mangorewa River
marginal strip
conservation reserve

BOPRC High Value
Ecological Site 37
(Lower Mangorewa Gorge)

Maungarangi Road

Mangorewa River

Legend

-  Te Otāhu Pā - Cadastral Parcel Boundary
-  Stream/river
-  NZ Cadastral Parcels
-  Road
-  BOPRC High Value Ecological Site
-  Conservation Reserve

Data Source: DOC Public Conservation Areas (2009) - Department of Conservation NZ
Cadastral Polygons - Land Information NZ, 2012
Aerial Photography - BOPPLASS Ltd.
HVES - BOPRC

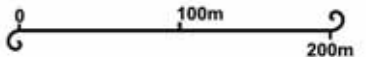
Te Otāhu Pā

Area: 15.1 ha
Located: Mangorewa River, Maungarangi Road

Map #: tpk_07k - May 2014

Info: Te Otāhu Pā is mostly covered in indigenous vegetation and is situated along the Mangorewa River. A BOPRC High Value Ecological site is adjacent to the Otāhu Pā site.

District: Western Bay of Plenty District
Legal Description: Sec 7 Blk XI Maketu SD



Scale: 1:5000



Pah Road

Otukawa

State Highway 2

Kaituna River

Legend

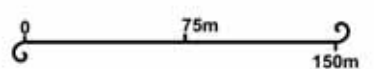
-  Otukawa - Cadastral Parcel Boundary
-  NZ Cadastral Parcels
-  Road

Data Source: NZ Cadastral Polygons - Land Information NZ, 2012 Aerial Photography - BOPLASS Ltd.

Otukawa

Area: 1.8 ha
 Located: State Highway 2
 Map #: tpk_14k - May 2014

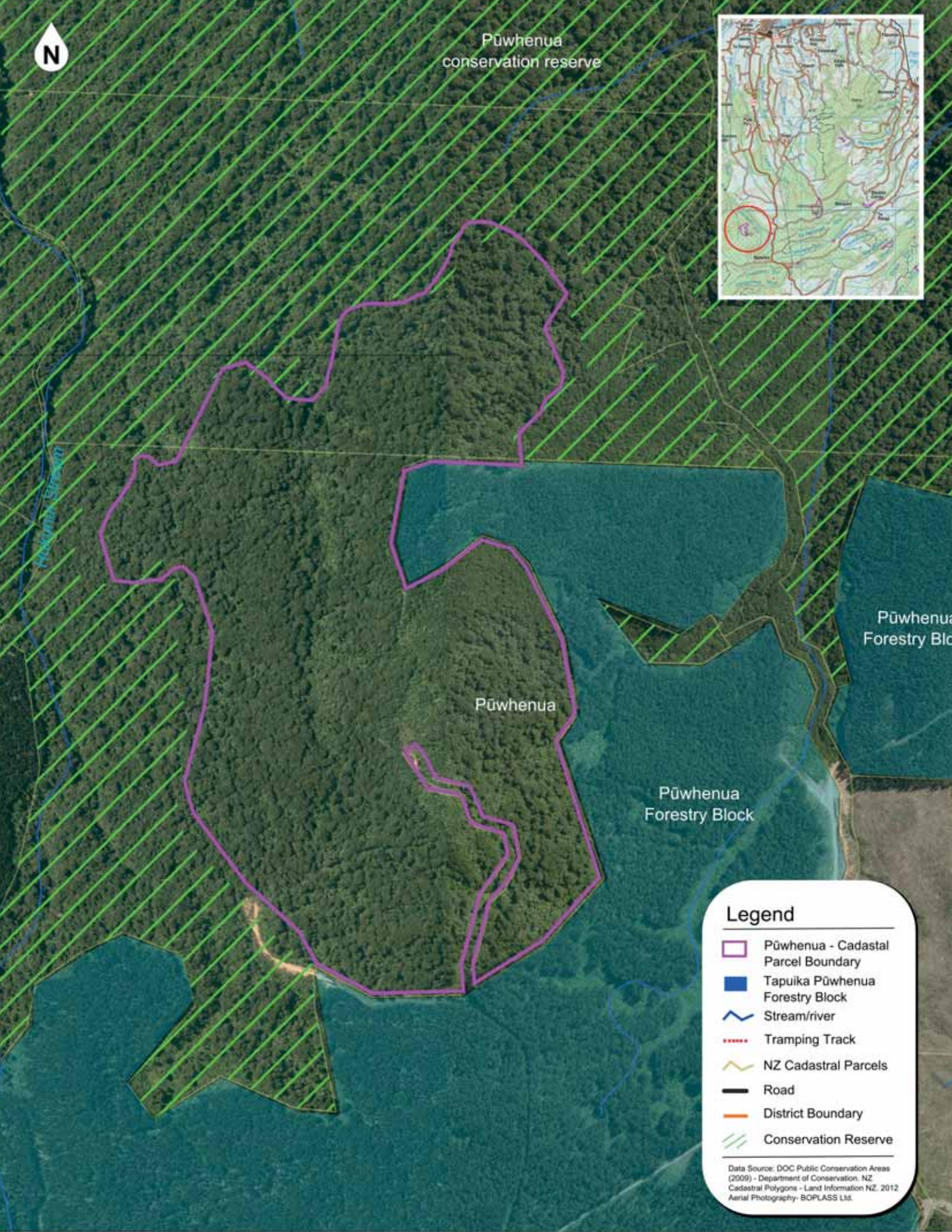
Info: Otukawa located along State Highway 2
District: Western Bay of Plenty District
Legal Description: Lot 1 DPS 88613



Scale: 1:4000



Pūwhenua conservation reserve



Legend

-  Pūwhenua - Cadastal Parcel Boundary
-  Tapuika Pūwhenua Forestry Block
-  Stream/river
-  Tramping Track
-  NZ Cadastral Parcels
-  Road
-  District Boundary
-  Conservation Reserve

Data Source: DOC Public Conservation Areas (2009) - Department of Conservation, NZ
Cadastral Polygons - Land Information NZ, 2012
Aerial Photography- BOPLASS Ltd.

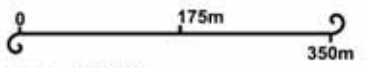
Pūwhenua

Area: 67.5 ha
Located: In Pūwhenua Forest
Map #: tpk_14m - May 2014

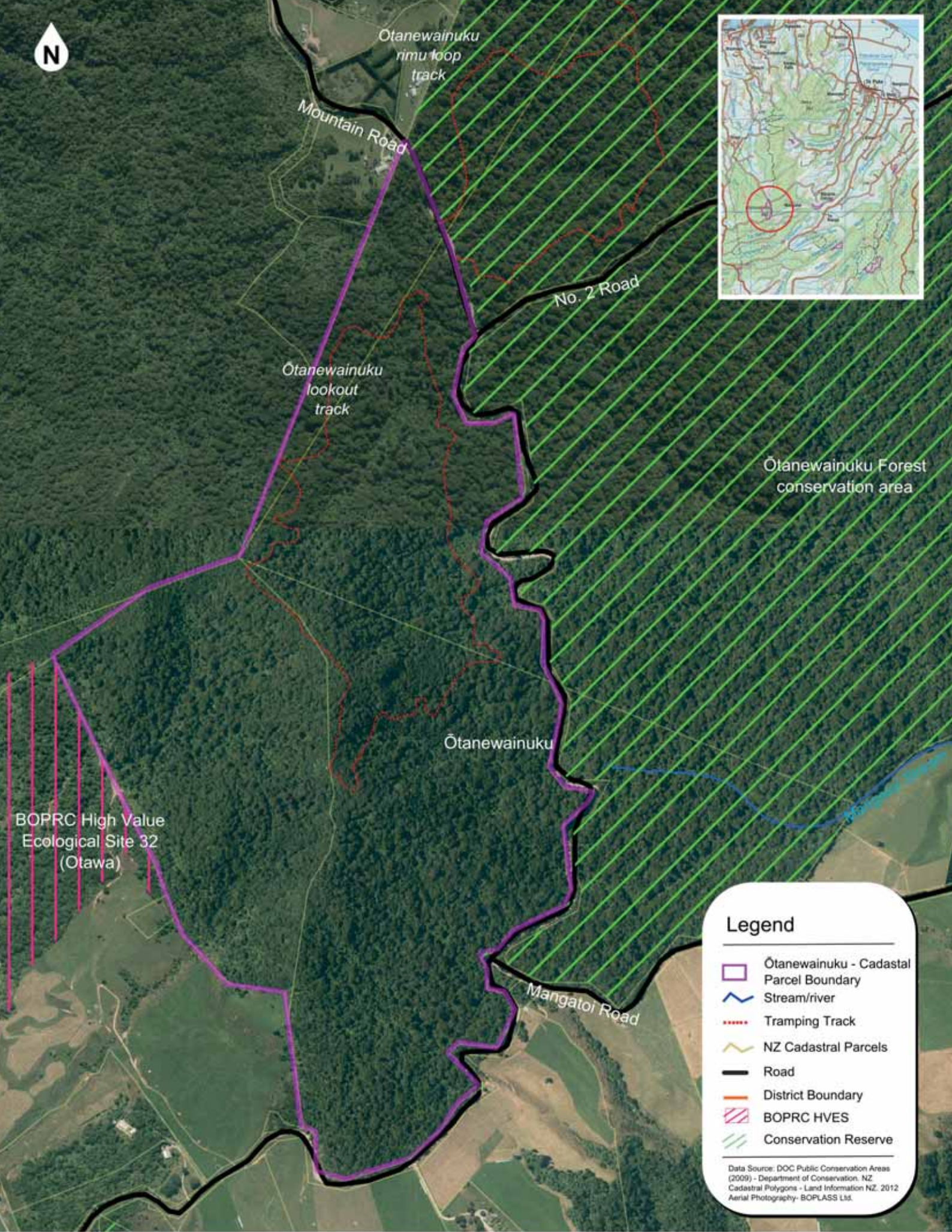
Info: Pūwhenua is surrounded by indigenous forest which forms part of the Pūwhenua Forest - a conservation reserve managed by the Department of Conservation.

District: Western Bay of Plenty

Legal Description: Pt Lot 4 DPS 85782, Pt Sec 5 Blk XIV Otanewainuku SD



Scale: 1:8,000



Otanewainuku Forest conservation area

Otanewainuku

BOPRC High Value Ecological Site 32 (Otawa)

Legend

- Otanewainuku - Cadastral Parcel Boundary
- Stream/river
- Tramping Track
- NZ Cadastral Parcels
- Road
- District Boundary
- BOPRC HVES
- Conservation Reserve

Data Source: DOC Public Conservation Areas (2009) - Department of Conservation, NZ Cadastral Polygons - Land Information NZ, 2012 Aerial Photography- BOPLASS Ltd.

Otanewainuku

Area: 120 ha
Located: Mangatoī Road
Map #: tpk_14n - May 2014

Info: Otanewainuku is surrounded by indigenous forest which forms part of the Otanewainuku Forest - a conservation reserve managed by the Department of Conservation. A BOPRC HVES is located to the east of the reserve. Otanewainuku Forest has a Kiwi Trust conservation group undertaking pest control.
District: Western Bay of Plenty
Legal Description: Pt Sec 3 Blk XVI, Pt Sec 4 Blk XV1, Pt Te Puke Blk, Pt Waitaha 1.

