



The Chairman and Members

Tauranga Moana Advisory Group

NOTICE IS GIVEN that the next meeting of the **Tauranga Moana Advisory Group** will be held at the **Cruise Deck, Club Mount Maunganui, 45 Kawaka Street, Mount Maunganui** on:

Thursday, 24 August 2017 commencing at 9:30 am





Tauranga Moana Advisory Group

Statement of Purpose

He aha ai? - *purpose*

Whanaungatanga and kaitiakitanga are the basis on which we want to move forward together. The purpose of Tauranga Moana Advisory Group is to continue building strong working relationships to support and enhance the health of our harbour and catchments.

Ahuatanga o te noho - *background*

The Tauranga Moana Iwi Collective Deed of Settlement, once passed into law, will require a Tauranga Moana Governance Group to be established. To prepare for the Governance Group, this Tauranga Moana Advisory Group has been established. The first Advisory Group meeting was held 17 November 2014 and it will continue to meet, share information and provide direction to staff of partner agencies until replaced by the Governance Group.

Whai wāhitanga - *participation*

Participants in Tauranga Moana Advisory Group will be representatives of the partners to Tauranga Moana Programme. At this stage, partners include Tauranga Moana iwi and hapū as represented by Ngāti Ranginui, Ngāi Te Rangī and Ngāti Pūkenga (Tauranga Moana Iwi Collective) as well as Western Bay of Plenty District Council, Tauranga City Council and Bay of Plenty Regional Council.

Ngā turanga - *roles*

The role of participants in the Advisory Group is to:

- **Whakataurite - *coordinate*:** oversee and contribute to the work that partners do in the harbour and catchments
- **Whakarongo - *listen*:** ensure the views of the hapū, iwi and wider community are represented in the work we do
- **Whakawhanaungatanga - *involve*:** promote and support hapū, iwi and the wider community participating in our work
- **Whakatohatoa - *share*:** provide regular updates to, and share information with partners
- **Whakakotahi - *integrate*:** promote the integration of our work so we can achieve our purpose together



Tauranga Moana Advisory Group Agenda

Thursday, 24 August 2017, 9.30am – 12:30pm

Cruise Deck, Club Mount Maunganui,
45 Kawaka Street, Mount Maunganui

Chairman: Councillor N Bruning, Bay of Plenty Regional Council

Deputy Chairman: C Tawhiao, Ngāi Te Rangi

Members: Councillor P Thompson, Bay of Plenty Regional Council
Councillor A von Dadelszen, Bay of Plenty Regional Council
Councillor M McDonald, Bay of Plenty Regional Council
Councillor C Stewart, Tauranga City Council
Councillor K Clout, Tauranga City Council
Councillor P Mackay, Western Bay of Plenty District Council
Councillor M Dean, Western Bay of Plenty District Council
R Tuanau, Ngāi Te Rangi
T Kawe, Ngāti Ranginui
R Nelson, Ngāti Ranginui
R Smallman, Ngāti Pūkenga
K Tapsell, Ngāti Pūkenga

Committee Advisor: S Kameta

Agenda

- 1 **Karakia/Mihi – Welcome**
- 2 **Apologies**
- 3 **Guest presentation** – St Thomas Moore School: student monitoring
Presented by Emma Richardson, Richard Webster and students
- 4 **Declarations of Conflicts of Interest**
- 5 **Previous minutes**
- 5.1 Tauranga Moana Advisory Group – 26 May 2017
- 6 **Update from partners**
- 6.1 Tauranga Moana iwi

7

| | | |
|-----|---|----|
| 6.2 | Western Bay of Plenty District Council | |
| 6.3 | Tauranga City Council | |
| 6.4 | Bay of Plenty Regional Council | |
| 7 | Presentations | |
| 7.1 | National Policy Statement Freshwater Management <i>Presented by Namouta Poutasi and Santiago Bermeo, BOPRC</i> | |
| 7.2 | Environmental indicators <i>Presented by Rebecca Lawton, BOPRC</i> | |
| 7.3 | TCC Environment Strategy <i>Presented by Tracy Plane, TCC</i> | |
| 8 | Reports | |
| 8.1 | Tauranga Moana Programme update | 13 |
| | APPENDIX 1 – 2017/18 Tauranga Moana Annual Work Plan | 17 |
| | APPENDIX 2 – Tauranga Moana Programme Dashboard – August 2017 | 54 |
| 9 | Long Term Planning workshop | 56 |
| 10 | General Business | |
| 11 | Next meeting – 24 November 2017 | |
| 12 | Karakia / Close of meeting | |



Minutes of the Te Awanui Tauranga Harbour Advisory Group meeting held in the Mauao Meeting Room, Bay of Plenty Regional Council, 87 First Avenue, Tauranga, on Friday, 26 May 2017 commencing at 9:30 am.

Present:

Chair: Councillor N Bruning

Members: Councillors P Thompson, A von Dadelszen, M McDonald, (Bay of Plenty Regional Council); Councillors C Stewart, K Clout (Tauranga City Council); Councillors P Mackay, M Dean (Western Bay of Plenty District Council); R Smallman (Ngāti Pūkenga), R Tuanau (Ngāi Te Rangi)

In Attendance: C Ingle (General Manager, Integrated Catchments), E Grogan (General Manager, Regulatory Services), S Omundsen (Acting General Manager Integrated Catchments), L Mason (Integrated Catchments Programme Manager), D Phizacklea (Acting Manager Strategy and Science), N Poutasi (Water Policy Manager), A Wills (Biosecurity Officer), P Scholes (Environmental Scientist), R Irving (Senior Regulatory Project Officer), S Weiss (Senior Regulatory Project Officer), T Barach (Pollution Prevention Officer, Tauranga City Council), C Walker (Environmental Planner, Tauranga City Council), N Moore (Committee Advisor), K Ellis (Ngāi Te Rangi)

Apologies: C Tawhiao (Ngāi Te Rangi), R Nelson (Ngāti Ranginui), K Tapsell (Ngāti Pūkenga), T Kawe (Ngāti Ranginui), Councillor P Thompson (early departure)

1 Karakia – R Smallman

2 Introductions

Councillor Norm Bruning welcomed meeting attendees particularly new iwi member Mr Reon Tuanau (Ngāi Te Rangi). An overview was provided including iwi affiliation and roles.

3 Attendance

It was noted that due to technical issues, iwi member Mr Riki Nelson (Ngāti Ranginui) was unable to attend via teleconference.

4 Conflicts of Interest

There were no conflicts of interest declared.

5 Previous Minutes

Resolved

That the Te Awanui Tauranga Harbour Advisory Group:

- 1. Confirms the minutes of the Te Awanui Tauranga Harbour Advisory Group meeting held on 24 February 2017.**

**Von Dadelszen/Mackay
CARRIED**

6 Electing a Deputy Chairman

Chairman Norm Bruning called for nominations for the position of Deputy Chairman of the Te Awanui Tauranga Harbour Advisory Group.

- a) Mr Charlie Tawhiao (Ngāi Te Rangi) was nominated by Mr Rehua Smallman (Ngāti Pūkenga) and Mr Andrew von Dadelszen (Bay of Plenty Regional Council) seconded the nomination.

There being no further nominations Chair Bruning announced that nominations were closed and declared that Mr Tawhiao would be duly elected as Deputy Chairman of the Te Awanui Tauranga Harbour Advisory Group, subject to his acceptance.

7 Update from Partners

7.1 Tauranga Moana Iwi

Highlights were:

- An update on engagement between Tangata Whenua and Council. Cultural plans were being developed that included landscaping to enhance the ecology and water quality of the Wairakei Stream;
- Interest in how the Navigation Bylaw Review changes would be communicated out to Iwi was acknowledged.

7.2 Western Bay of Plenty District Council

Activities summarised were:

- An update on the two sewerage projects;
- An update on wastewater system and discharges resource consent application. Alternative discharge options are being investigated. It was clarified that consultation with Tangata Whenua had been engaged early in the process;
- An update on cycleway progress and proposed crossings.

7.3 Tauranga City Council

Updates were provided on:

- Southern pipeline, second largest project;
- Preparation work underway at Memorial Park for harbour crossing. Project to be completed by December 2017;
- Monitoring report for comprehensive storm water consent application;
- Establishment of new Environment Committee and Strategy;
- Marine precinct to open in November 2017 includes a 350 tonne travel lifter;
- Adjustments being made to the Te Maunga UV Plant;
- Review underway of wastewater coastal structures;
- Landscaping enhancements planned at Wairakei Street Corridor Project.

7.4 Bay of Plenty Regional Council

Highlights were:

- The Environment Court has released an interim decision in relation to leaving the wreck of the MV Rena on Astrolabe Reef. The Court determined that consent should be granted with conditions. The parties are to consult further on the appropriate conditions and report back to the Court;
- The new Regional Coastal Environment Coastal Plan has become operative, with exception to two rules that are under appeal relating to structures in high value biodiversity areas. Staff are working on implementation guidance;
- Dredging delayed on the Opureora Channel due to problems with contractor equipment. Once problems are resolved, works should commence in mid-to-late June 2017. Project completion targeted within the current consent window which ends at the end of August 2017;
- The Navigation Safety Bylaw Review has been completed with effect from 1 July 2017. Additional patrols would be scheduled, inclusive of the Tauranga Harbour, to help communicate the changes to the public.
- The new multi-purpose maritime vessel is scheduled to arrive in July 2017. This will increase our spill response capability and enable additional support for biosecurity, compliance and Emergency Management in the Tauranga Harbour.

Members requested that further reports and/or presentations be provided on:

- a) mitigation methods for adverse stormwater effects to the Tauranga Harbour;
- b) Kopurererua Stream water quality and monitoring
- c) Assessment of 'best' harbour indicators.

Resolved

That the Te Awanui Tauranga Harbour Advisory Group:

- 1. Receives the update reports, from Advisory Group members.**

**Bruning/Stewart
CARRIED**

8 **Advisory Group and programme name change**

Discussion was held on the relevancy of the current name of the Advisory Group and programme. Members supported the recommendation to change the Advisory Group's name from Te Awanui Tauranga Harbour Advisory Group to Tauranga Moana Advisory Group and the programme name to Tauranga Moana Programme to better reflect the catchments, rivers and harbours, mountains to sea topography.

9 **Presentations**

9.1 **Oranga Taiao Oranga Tangata Project, Ngāi Te Rangi**

Powerpoint Presentation (Objective ID A2616114)

Ms Keamia Ellis, (Ngāi Te Rangi) presented on the Oranga Taiao Oranga Tangata project to enhance the foundations of kaitiakitanga practiced within the rohe of Tauranga Moana. Mātauranga Māori would provide the foundation for traditional knowledge of tangata whenua to develop a framework to assist an informed decision making process. Marae currently engaged with the project were:

- Southern Harbour - Hungahungatoroa, Waikari and Whareroa;
- Northern Harbour - Ōtāwhiwhi, Rereatukahia and Tuapiro.

The value of Hapū Management Plans were acknowledged as the development of these plans over the past two decades has enabled hapū to embed the practices of kaitiakitanga in a practical and holistic way.

Members advised an interest in a field trip to view the various hapū projects.

Change to Order

At the direction of the Chair, the meeting agreed to bring forward agenda item Environment Strategy (Tauranga City Council) to accommodate presenters.

9.1 **Environment Strategy, Tauranga City Council**

Powerpoint Presentation (Objective ID A2615615)

TCC Environmental Strategic Planner Ms Celia Walker presented on the establishment of a new committee at Tauranga City Council. The aim of the committee was to develop an environment strategy to understand the state of the environment and create deliverables on outcomes and targets set within the strategy.

Members acknowledged the potential similarity of functions undertaken by Regional Council. Clarity of roles and responsibilities would assist sustainable management of resources with other stakeholders.

Attendance

Councillor P Thompson left the meeting at 11.00 am.

9.2 Motuopae Island restoration, Ngāi Tamarawaho

PowerPoint Presentation (Objective ID A2615615)

Staff presented on the Motuopae Island restoration programme across six environment management areas. Collaborative efforts are targeted to improve water quality, harbour health and protect cultural values on the island.

9.3 National Policy Statement Freshwater Management

PowerPoint Presentation (Objective ID A2615240)

BOPRC Water Policy Manager Namouta Poutasi presented on the National Policy Statement Freshwater Management. An overview on how rules and actions could provide for the values of our waterways was provided. The plan framework established values, implementation methods and set the rules for implementing the plan. Important issues could be addressed on allocation, swimming, fishing, mahinga kai and discharges through implementing the plan.

Members supported that the indicative work on the Te Awanui Tauranga Harbour WMA commence in July 2017.

9.4 Regulatory Compliance Port of Tauranga Monitoring Report

PowerPoint Presentation (Objective ID A2618331)

Staff presented on discharges to air from the Port of Tauranga and Mount industrial area for methyl bromide, dust, sulphur dioxide and hydrogen sulphide.

An increase in monitoring activity was reported in response to air discharge and community health issues. Compliance monitoring had increased and air discharge mitigation / reduction plans with major industrial players were being implemented. Further controls on discharges would be applied through the consent process. Council had approved funding an expansion in air monitoring equipment, new technology and resources.

9.5 Tauranga Harbour swimmability

PowerPoint Presentation (Objective ID A2610831)

Staff presented on swimmability of beaches and streams and the monitoring framework. In summary, water was generally safe for swimming at open coastal and estuarine sites but there posed some risk to swimmers in rivers. It was recommended that swimming in run-off affected water areas be avoided for 48 hours after rainfall, together with checking the regular updates and warnings provided on websites by Toi Te Ora Public Health, Bay of Plenty Regional Council and LAWA.

Resolved

That the Te Awanui Tauranga Harbour Advisory Group:

1. Receives the presentations:

- **Oranga Taiao Oranga Tangata Project, Ngāi Te Rangi;**
- **Environment Strategy, Tauranga City Council;**
- **Motuopae Island restoration, Ngāi Tamarawaho;**
- **National Policy Statement Freshwater Management;**
- **Regulatory Compliance Port of Tauranga Monitoring Report;**
- **Tauranga Harbour swimmability.**

**Bruning/Clout
CARRIED**

10 Reports

10.1 Te Awanui Tauranga Harbour Programme update

The update on the Te Awanui Tauranga Harbour programme was accepted by the members.

Resolved

That the Te Awanui Tauranga Harbour Advisory Group:

1. Receives the report – Te Awanui Tauranga Harbour Programme update.

**Mackay/Tuanau
CARRIED**

11 General Business

There were no general business matters.

12 Next meeting – 24 August 2017

13 Karakia whakamutu

The meeting closed with a karakia/prayer by Mr R Smallman.

The meeting concluded at 12:30 pm.

Objective ID:

Report To: Tauranga Moana Advisory Group

Meeting date: 24 August 2017

Report From: Sarah Omundsen, Tauranga Catchments Manager

Tauranga Moana Programme Update

1 Purpose

To provide the Tauranga Moana Advisory Group with the 2017/18 Annual Work Plan for the programme, and update on programme progress for July - August 2017.

It is recommended that the Advisory Group:

1. Receive the report “Tauranga Moana Programme Update” and associated appendices.

2 Background

The Tauranga Moana Programme was established in 2013 to deliver on the community's expectations for the health of the Tauranga Harbour. The programme coordinates, prioritises and delivers on all the work related to the harbour and catchment that is undertaken by Tauranga City Council, Western Bay of Plenty District Council and the Regional Council. It allows an adaptive and collaborative management approach.

Originally called Te Awanui Tauranga Harbour Programme, the name was changed to Tauranga Moana in the 2016/17 year. This change better reflects the management area which includes the inland catchment as well as Te Awanui / Tauranga Harbour. It also aligns with the Tauranga Moana Iwi Management Plan 2016 – 2026 and the area of interest defined in that Plan.

This Tauranga Moana Advisory Group oversees the Programme. Staff provide regular programme updates and reports to the Group including:

- Annual work plans
- Annual and six monthly reports
- Regular dashboard reports summarising project progress

3 2017/18 Annual Work Plan

The Tauranga Moana Programme annual work plan 2017/18 is provided at Appendix 1.

The work plan provides an overall picture of the things the three councils do in the harbour and catchment, and covers all significant activities (both projects and ongoing work). It describes projects, budgets and deliverables for the programme in a number of work areas:

| Work area | Activity |
|-------------------------------------|--|
| Governance and programme management | Planning, reporting and communicating on programme and project progress |
| Integrated planning and modelling | Developing tools and frameworks to improve the way our resources are managed |
| Infrastructure | Providing infrastructure to improve and protect water quality |
| Science | Monitoring harbour and catchment health, and improving our knowledge base |
| Maritime | Keeping people safe on the water |
| Regulatory compliance | Ensuring discharge standards to land and water are adhered to, and responding to pollution events |
| Catchment, parks and recreation | Maintaining our land, water and biodiversity as well as supporting the community to protect their special places |

Ensuring iwi and hapū participation, and providing for Mātauranga Māori in the work of the Programme underpins all of these work areas and activities.

Priorities for the programme in the 2017/18 year include:

- Support the preparation of the co-governance document for Tauranga Moana (Ngā Tai ki Mauao) – subject to resolution of the Tauranga Moana Framework.
- Begin information gathering and data collection in the Tauranga Harbour Water Management Area as part of the National Policy Statement for Freshwater Management process.
- Better align the Tauranga Moana Programme with the Tauranga Moana Iwi Management Plan and support the development of a “State of the Moana” to measure and monitor cultural health.
- Continue to deliver long-term monitoring of air, land, water and sediment quality, as well as biodiversity indicators, and report on the state of the environment, using estuarine and catchment health indicators.
- Facilitate an all tide access to Matakana Island through dredging the Opureora Channel, and upgrade and dredge the Ōmokoroa and Opureora boat ramps to accommodate a larger ferry / barge.
- Reduce cultural and environmental impacts and risks from wastewater and from stormwater, including through reticulation of the Ongare Point and Te Puna West communities.
- Clear nuisance accumulations of sea lettuce from high public use areas of the harbour and work jointly with partners and schools to clear litter and rubbish from harbour margins and streams.
- Develop a plan of action to make Kaiate Falls and stream swimmable again, and continue to work with tangata whenua, landowners and the community on actions to reduce sediments, nutrients and bacteria entering waterways of Tauranga catchments.
- Undertake regular compliance monitoring of all active earthwork sites as well as dairy discharges, geothermal discharges and abstractions, industrial and air discharges.
- Provide for safe navigation in the harbour and maintain a 24/7 response to navigation and safety issues as well as oil and spills.

Programme dashboard for August 2017

The dashboard for August 2017 is provided at Appendix 2.

The dashboard shows progress against all projects listed in the 2017/18 Annual Work Plan, highlights over the last two months and upcoming activities. The programme and projects are on track in terms of scope, budget and schedule at this stage.

Appendix One

Tauranga Moana

Programme

2017/2018 Annual Work Plan

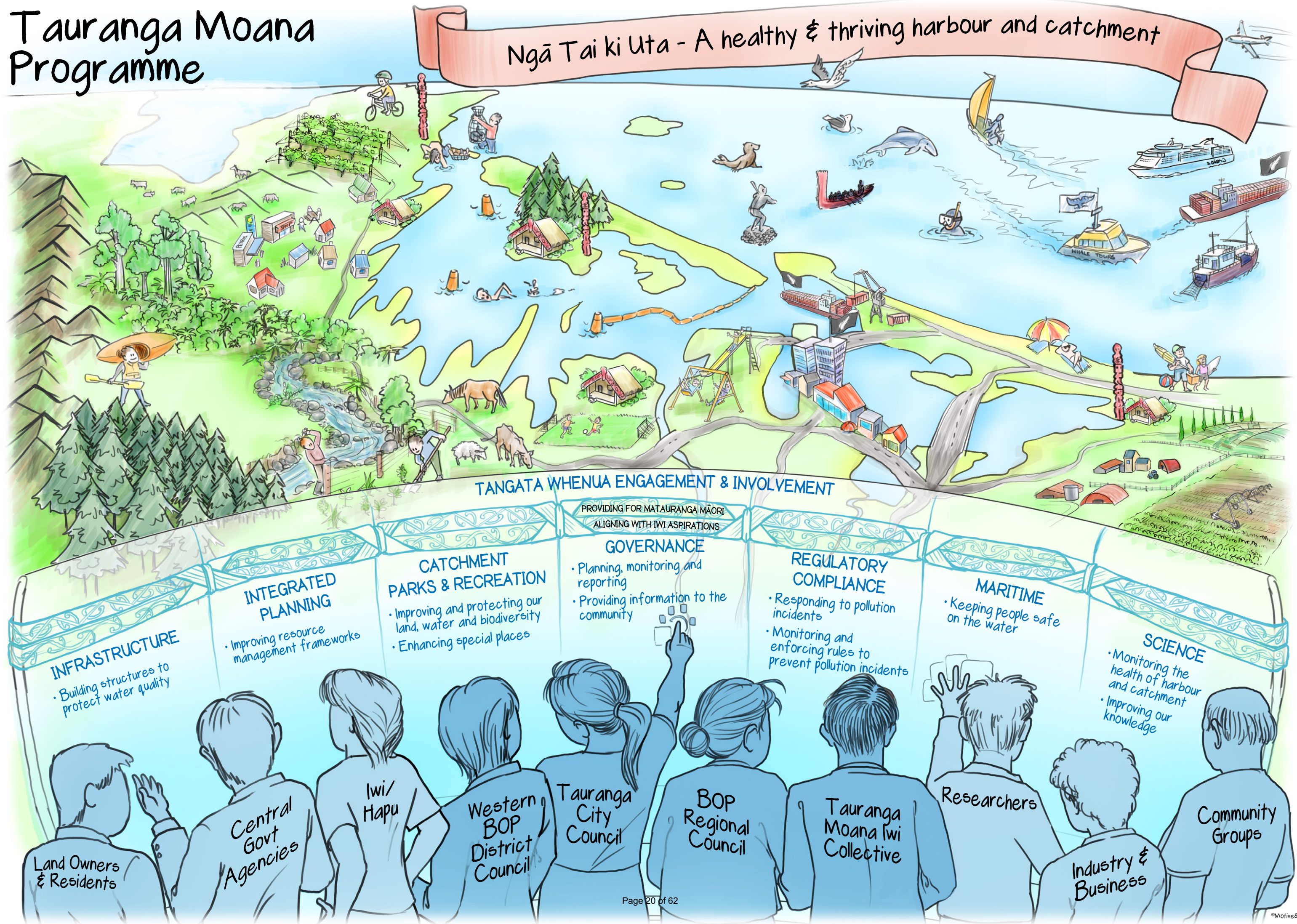


Tauranga Moana Programme

Annual Work Plan 2017/2018

Tauranga Moana Programme

Ngā Tai ki Uta - A healthy & thriving harbour and catchment





Contents

| | |
|--|-----------|
| Purpose | 3 |
| Background | 3 |
| Tauranga Moana Iwi Management Plan | 4 |
| Vision and outcomes and what we do | 5 |
| Priorities for 2017/2018 | 6 |
| Our approach to delivering the Programme | 8 |
| Assumptions | 8 |
| Annual Work Plan | 9 |
| Governance, tangata whenua engagement and involvement and programme management | 10 |
| Integrated planning and modelling | 13 |
| Science | 18 |
| Operations | 20 |
| Financials | 33 |



Purpose

The purpose of the Tauranga Moana Programme is to coordinate the work of councils in the Tauranga Harbour and its catchment, and deliver on community expectations. This work includes policy and planning, science, pollution prevention, maritime services as well as all operational activities such as biosecurity, biodiversity protection and sustainable land management.

The Programme covers all significant activities (both projects and ongoing work) in the harbour catchment carried out by Tauranga City Council (TCC), Western Bay of Plenty District Council (WBOPDC) and Bay of Plenty Regional Council (BOPRC), providing an overall picture of the things we do in the area.

Background

The vision for Tauranga Moana is: *“A healthy and thriving harbour and catchment that contributes to our wellbeing today and in generations to come.”* Outcomes sought for the harbour and its catchment are:

- **Ecological Health:** The natural environment is healthy and resilient, supporting thriving native wildlife and kaimoana.
- **Amenity:** The harbour and catchments are able to be used and appreciated.
- **Cultural:** Mana whenua and Mana moana is recognised, kaitiakitanga is enabled and cultural values are protected.
- **Sustainable Land Management:** Land and water use is managed to maintain and/or improve the health of the harbour and catchment.
- **Recognising Economic Importance:** The economic value of access and use is retained for the harbour and catchment.
- **Community:** Local communities have easy access to information about the harbour and catchment values and issues, and are actively supported to care for values that are important to them.

This vision and outcomes were developed following community feedback received in a Perceptions Survey conducted in April 2013. They are considered interim, until a formal process is undertaken to identify a vision and outcomes through the development of a co-governance document.

The programme was formally established by Regional Council in 2013 in order to coordinate, prioritise and deliver on all work related to the harbour and its catchment. Western Bay of Plenty District Council and Tauranga City Council have been participating in the programme since 2015. The intent is that the programme will develop to include all partners (iwi and the three councils) to enable a collaborative and adaptive management approach.

The Tauranga Moana Iwi Collective Deed of Settlement, once passed into law, will require a Tauranga Moana Governance Group to be established. To prepare for the Governance Group, an Advisory Group has been established which consists of iwi collective members as well as councillors from Tauranga City Council, Western Bay of Plenty District Council and Bay of Plenty Regional Council.

The first Tauranga Moana Advisory Group meeting was held 17 November 2014. The Advisory Group will continue to meet, share information and provide direction to staff of partner agencies until replaced by the Governance Group.



Tauranga Moana Iwi Management Plan

The Tauranga Moana Iwi Management Plan 2016–2026 is a key document that influences the Tauranga Moana Programme. The plan is the collective voice of Ngāti Ranginui, Ngāi Te Rangi and Ngāti Pūkenga as it relates to Tauranga Moana: Te Awanui (Tauranga Harbour), surrounding lands and waters including the ocean.

The plan articulates the collective vision and aspirations of the three Iwi in relation to Tauranga Moana (comprising Te Awanui; coastal marine areas; adjacent land and inland waters - rivers, streams, wetlands, groundwater and geothermal taonga). It includes priority issues, outcomes and actions for the ten years 2016-2026. It also outlines protocols e.g. principles of engagement; engagement protocols for consent and plan change processes; role of mātauranga in projects/programmes.

The plan was developed by the three Iwi to encourage greater collaboration now, in advance of Treaty Settlements. It seeks to highlight collective responsibility in the health and wellbeing of Tauranga Moana and provide a more proactive (rather than reactive) approach to support Tauranga Moana Iwi and hapū at all levels within environmental management.

It takes a “Sea to the Mountains” approach of looking at the environment as a whole. It is structured around five core elements, when in balance; represent the health of Tauranga Moana:

- Tūhauora Tinana - Healthy Waters
- Tūhauora Whenua – Healthy Land
- Tūhauora Wairua – Cultural Heritage
- Tūhauora Whānau – Our People
- Tūhauora Hinengaro - Knowledge

Vision and outcomes and what we do

OUR VISION *A healthy and thriving harbour that contributes to our wellbeing today and in generations to come*

| Outcomes sought... | | | | | |
|---|---|---|---|---|--|
| Ecological Health | Amenity | Cultural | Sustainable land management | Recognising economic importance | Community |
| The natural environment is healthy and resilient, supporting thriving native wildlife and kaimoana. | The harbour and catchments are able to be used and appreciated. | Mana whenua and Mana moana is recognised, kaitiakitanga is enabled and cultural values are protected. | Land and water use is managed to maintain and/or improve the health of the harbour and catchment. | The economic value of access and use is retained for the harbour and catchment. | Local communities have easy access to information about the harbour and catchment values and issues, and are actively supported to care for values that are important to them. |
| The work that we do... | | | | | |
| Infrastructure Provide infrastructure to improve and protect water quality. Protect water supply catchments. | | | Science Monitor the environmental and ecological health of the catchment and harbour. Invest in building our knowledge base so we understand the state of the environment and what needs to happen to improve it. | | |
| Integrated planning and modelling Provide tools and frameworks to improve the way resources are managed and deliver on the community's expectations in the long-term. Build strong partnerships to deliver a coordinated programme of work for the harbour and catchment. | | | Maritime Keep people safe, and make sure harbour users are operating to avoid conflict with each other and the environment. | | |
| Tangata whenua engagement and involvement Align Tauranga Moana Programme with the vision and aspirations of Tauranga Moana Iwi. Ensure appropriate participation of iwi and hapū in council processes and activities. Provide for Mātauranga Māori in programme work to protect and enhance cultural values. | | | Catchment, parks and recreation Improve amenity values and opportunities around the catchment, harbour margins and streams, providing better living spaces. Invest in environmental works to improve and protect land, water, and biodiversity in the harbour and catchment. Support the community to restore and enhance their special places. Protect against threats to the health of the harbour and catchment, including from marine pests. | | |
| Governance and programme management Plan, monitor and report on Programme work. Make information about the harbour and catchments available when people go looking, when we have something new to say, or if we are doing something that will affect them. Improve the community's understanding about high profile harbour issues. | | | Regulatory compliance Monitor and enforce plan rules and consent conditions to ensure discharge standards to land and water and air are adhered to. Ensure any adverse effects from discharges to land, water and air are remediated and prevented from occurring again. Respond to complaints and reports of pollution. | | |

Priorities for 2017/2018

| | |
|--|--|
| Infrastructure | <ul style="list-style-type: none"> ➤ Reduce cultural and environmental impacts and risks from wastewater and from stormwater. ➤ Upgrading and dredging of Ōmokoroa and Opureora boat ramps to accommodate larger ferry/barge, and facilitate an all tide access to Matakana Island. ➤ Developing combined walking and cycling routes to provide connectivity and amenities for the community. |
| Integrated planning and modelling | <ul style="list-style-type: none"> ➤ Identify and address potential risks to water supply and water quality in the water supply catchments. ➤ Robust coastal inundation and erosion design levels within Tauranga Harbour. ➤ Begin work on a co-governance document for Tauranga Moana – subject to resolution of the Tauranga Moana Framework. ➤ Begin information gathering and data collection in the Tauranga Harbour Catchment for Freshwater Futures. ➤ Flood hazard mapping and design levels for the Uretara Stream. |
| Governance, Tangata Whenua Engagement and Involvement and programme management | <ul style="list-style-type: none"> ➤ Support the Tauranga Moana Advisory Group. ➤ Prepare a programme work plan for 2018/19 that aligns with the Iwi Management Plan, and report on programme progress through a six month and end of year report. ➤ Maintain updates on progress to establish the co-governance for Tauranga Moana, liaising with the Office of Treaty Settlements and Tauranga Moana Iwi Collective. ➤ Support the development of a “State of the Moana” programme to measure and monitor cultural health of Tauranga Moana. ➤ Provide strategic communications advice, and support the programme to connect with and influence stakeholders. |
| Maritime | <ul style="list-style-type: none"> ➤ Provide for safe navigation in the harbour. ➤ Provide education and enforcement. ➤ 24/7 response to navigation and safety oil and spills. ➤ Assist boaties on the water when needed. ➤ Ensure proper safety plans are in place for public and participant safety. |
| Science | <ul style="list-style-type: none"> ➤ Deliver long-term monitoring of air, land, water and sediment quality, as well as biodiversity indicators. ➤ Maintain connections with science providers and provide appropriate financial and/or in-kind support for specific Tauranga Harbour projects. ➤ Deliver a technical report on selection and calculations of State of the Environment indications for estuarine and catchment areas. |



Catchment, parks and recreation

- Clear nuisance accumulations of sea lettuce from high public use areas of the harbour and use the collected sea lettuce sustainably.
- Restore and maintain our harbour esplanades and margins, to filter nutrients and silt entering the harbour.
- Undertake beach nourishment in high value recreation sites.
- Work jointly with partners and schools to clear litter and rubbish from harbour margins and streams.
- Reduce sediments, nutrients and bacteria entering water.
- Develop a plan of action to make Kaiate Falls and stream swimmable again.
- Protect and restore sites of ecological and community significance.
- Reduce sedimentation through specific actions in high risk areas.
- Manage mangrove expansion.
- Support care groups throughout the catchment, coast and harbour.
- Monitor and respond to marine biosecurity risks.

Regulatory Compliance

- Continue audits of high risk and hazardous business.
- Undertake regular monitoring of all active earthwork sites.
- Undertake compliance monitoring of dairy discharges, geothermal discharges and abstractions, industrial and air discharges.
- Complete all enforcement action within statutory timeframes.
- Respond to all urgent complaints within 12 hours and all complaints within three days.



Our approach to delivering the Programme

As we work on and in the Programme we'll use the following approaches for success:



Kotahitanga Relationships

Iwi and hapū have a special relationship with Tauranga Moana. We will work with iwi and hapū in planning and delivery of the programme in a mutually constructive way.



Mana whenua, Mana Moana Mountains to the sea

We recognise the interconnected relationships between land, sea and our communities. Catchments feeding the harbour need to be sustainably managed, hence the maunga to moana approach.



Whanaungatanga Community participation

We encourage local communities to participate and lead in doing the right thing.



Whakaaro tahi Communication

We regularly share our understanding of the harbour and its catchment. This is a collaborative programme and requires good communication with all involved.



Pūtaiao Scientific integrity

We rely on scientific research and accurate data to help us make wise decisions. Scientific research complements the decision-making of Council management and kaitiakitanga.



Mātauranga Māori Knowledge

We will work with iwi and hapū to include mātauranga Māori alongside our scientific research and data collection to maintain the mauri of the harbour.

Assumptions

The key assumptions for the programme are:

- No substantive changes to the annual work plan will be made by partners.
- The Tauranga Moana Iwi Collective Deed of Settlement will be passed into law.
- Responsibility for delivery of work identified in the programme remains the responsibility of the individual agencies.
- Partners and stakeholders are able and willing to engage with the programme.



Annual Work Plan

The following sections provide details on all of the Programme work planned in the Tauranga Harbour and catchments by Tauranga City Council, Western Bay of Plenty District Council and Bay of Plenty Regional Council. The Programme is broken into four areas of focus:

- 1 Governance, tangata whenua engagement and involvement and programme management.
- 2 Integrated planning and modelling.
- 3 Science.
- 4 Operations (includes maritime, infrastructure, catchment, parks and recreation, and pollution prevention).

Each section shows work underway by individual agencies, but also identifies those collaborative activities where two or more agencies are working together. Information on projects as well as deliverables and budget are provided.



Governance, tangata whenua engagement and involvement and programme management

| | Project | Background | Description | KPI/Deliverables | Budget |
|--------|---|---|---|---|--|
| SHARED | Tauranga Moana Programme 2016/2017 Annual Report and Highlights summary. BOPRC, TCC, WBOPDC. | The first reporting against the Annual Work Plan took place in 2013/2014. | The Annual Report describes the results of Tauranga Moana Programme projects carried out in the 2016/2017 year. Accompanying the Annual Report will be a summary of programme highlights. | Present the 2016/2017 Annual Report and Highlights Summary to relevant council committees in September 2017. | Staff time only. Funded from existing budgets. |
| | Tauranga Moana Programme Annual Work Plan 2018/2019. BOPRC, TCC, WBOPDC. | The first Annual Work Plan was produced in 2013/2014. | Restructure the Tauranga Moana Annual Work Plan to better align with the Tauranga Moana Iwi Management Plan. Produce the 2018/2019 Annual Work Plan in the new format. | Present the 2018/2019 Annual Work Plan to the relevant council committees for approval in August 2018. | Staff time only. Funded from existing budgets. |
| | State of the Moana Programme – Phase 1 | The Tauranga Moana Iwi Management Plan includes an action to develop a State of the Moana programme to measure and monitor the cultural health of Tauranga Moana. Regional Council and Tauranga Moana Iwi are identified as the lead agencies. | Phase 1 of this project is to scope up what's required to develop the programme. | Project scope. | \$50,000 BOPRC. BOPRC and TMIC staff time. |
| | Tangata whenua involvement and capacity building. BOPRC, TCC, WBOPDC | The Rangataiki River co-governance process, procedures and lessons learned is providing some helpful information of what lies ahead for tangata whenua and what is needed. The potential for this structure to have more layers however will require further thinking around how this will work for the Tauranga Moana Programme. | Liaise with Tauranga Moana Iwi Collective to gauge their perspective of how the Moana Framework should be considered to ensure hapū involvement. | Ongoing work throughout 2017/2018. All three councils will need to ensure their relationships with tangata whenua are strong and robust so that dual roles in caring for the environment become clearly established. | Staff time only. Funded from existing budgets. |



| | Project | Background | Description | KPI/Deliverables | Budget |
|-------|---|---|--|--|---|
| BOPRC | Support to Tauranga Moana Advisory Group (or subsequent co-governance group). | Tauranga Moana Advisory Group has been established as a forerunner to Governance Group that will involve partner organisations. | Preparation and presentation of reports and advice to the Tauranga Moana Advisory Group, in order for the Group to provide informed direction. | Provide reports and advice to Tauranga Moana Advisory Group as necessary. | Staff time funded from existing budgets. |
| BOPRC | Communications Strategy implementation 2017/2018. | | Implement Communications Strategy and Action Plan that delivers messages to target audiences. <ul style="list-style-type: none"> • Biodiversity harbour camera. • Video harbour stories. • E-newsletters. • Maritime signage campaign. | Deliver targeted communications material throughout the year as per the Communications Strategy and Plan. Respond to media and communications opportunities and issues as they arise. | \$50,000. Staff time funded from existing budgets. |
| BOPRC | Perception Survey | In July/August 2012, and March/April 2015 Council carried out community perceptions surveys to provide a snapshot of the community's perceptions of harbour issues, management and their information needs and preferences. | Design and conduct community perceptions research that will inform multi-agency strategy development and assist in measuring Tauranga Moana Programme success. | Present the results of the Perceptions Study to Council by 30 June 2018. | \$23,000 |
| BOPRC | Happy Harbour Fun Day. | A 2013 Tauranga Harbour Symposium and 2015 Catchment Catch-up were delivered to promote and facilitate information sharing about harbour health, issues and management work. | Deliver a hands-on outdoor experience for the community to learn more about Tauranga Harbour's land, water and wildlife. | Deliver a successful Tauranga Harbour event. | \$47,000. |




| | Project | Background | Description | KPI/Deliverables | Budget |
|--------|--|---|---|--|---|
| BOPRC | Build capacity for the use of Mātauranga Māori for Tauranga Moana. | <p>Following the Tauranga Moana Iwi Collective (TMIC) Deed of Settlement and establishment of a co-governance entity, it is anticipated that Mātauranga Māori will feature as part of future environmental monitoring.</p> <p>Mātauranga Maori is a knowledge system that should be considered and applied where appropriate.</p> <p>Support for the development of a Mātauranga Strategy will be sought.</p> | <p>Liaise with relevant hapū/iwi and other entities to ensure Mātauranga Maori is documented, incorporated and supported where appropriate.</p> <p>Initially this project will require scoping for future project related development.</p> | Ongoing work through 2017/2018. | Staff time funded from existing budgets. |
| BOPRC | Tauranga Moana Iwi Management Plan Socialisation Implementation | <p>The Tauranga Moana Iwi Management Plan is a joint Iwi Planning Document prepared by, and on behalf of, Ngāi Te Rangi, Ngāti Ranginui and Ngāti Pūkenga. It updates and replaces the Te Awanui Tauranga Harbour Iwi Management Plan 2008.</p> <p>The Plan sets out priority issues, outcomes and actions for the next ten years.</p> | The plan sets out the aspirations of the three iwi in regards to land, water and people moving into a post treaty landscape. The plan focusses on matters based on mātauranga Māori and through this cultural lens looks to address issues by providing outcomes and actions to resolve these issues. | Ongoing work to support hapū/iwi through 2017/2018. | One staff member time funded from existing budgets. |
| WBOPDC | Tauranga Moana Partnership Forum | The Tauranga Moana Partnership forum is an important component in the governance and management of the harbour environments, including the catchments that enter the harbour. | Quarterly meetings. | Ensure that the Tauranga Moana Partnership Forum is kept up to date with progress on the implementation of the Tauranga Harbour Programme actions and outputs for 2017/2018. | Funded from the Democracy budget. |



Integrated planning and modelling

| | Project | Background | Description | KPI/Deliverables | Budget |
|--------|---|---|---|---------------------------------|--|
| SHARED | Water supply catchment management BOPRC, TCC | <p>Identify and manage issues related to adverse water quality in the TCC drinking water supply catchments.</p> <p>Key challenges include high sediment loads, turbidity, organics and pathogenic bacteria during high rainfall events.</p> <p>These pose various risks and expenses on the public drinking water supply and contribute to ongoing operational and maintenance costs.</p> | <p>Work programme includes ground and aerial inspections, Landslips monitoring/ mitigation, Riparian bank erosion including riparian fencing, planting, ongoing maintenance,</p> <p>Sampling and analysis of stream water quality,</p> <p>Management of land owned by TCC including:</p> <ul style="list-style-type: none"> • 2500ha native bush • 200ha exotic forest, <p>General observations e.g. trees fallen into the stream causing blockages/flooding; fly dumping; potential agricultural/ commercial industrial/earthwork/ forestry activity that may impact on water quality,</p> <p>Storm event monitoring to identify sources of high turbidity, and</p> <p>Pest animal and plant management.</p> | Ongoing work through 2017/2018. | <p>Catchment management activity operational budget \$130,000 includes one FTE staff resource (TCC).</p> <p>Staff time funded from existing budgets (BOPRC).</p> |



| | Project | Background | Description | KPI/Deliverables | Budget |
|--------|--|--|---|--|--|
| SHARED | Tauranga Harbour Inundation and Coastal Erosion BOPRC, TCC, WBOPDC | Over previous years there have been a number of studies undertaken to develop harbour inundation and erosion design levels. These studies have used a number of different technical methods resulting and a range of design levels. Consequently there is currently an inconsistent application of design levels around the harbour margins including the allowance for climate change related sea level rise. | The purpose of this study is to use the latest technical approach for the analysis and modelling of Tauranga Harbour inundation and erosion. Recently NIWA (for BOPRC) has completed a complementary project developing the Coastal Calculator which generated design inundation levels for 21 locations along the open coast of the Bay of Plenty. The Tauranga Harbour study results will be integrated with the Coastal Calculator to give a consistent set of inundation design levels. | The outcome will be a robust, peer reviewed set of harbour inundation and erosion design levels that include climate change allowances. The design levels can then be consistently applied around the harbour by all agencies. | \$50-100,000 BOPRC. \$50-100,000 TCC. \$50-100,000 WBOPDC. |
| BOPRC | Begin work on a co-governance document for Tauranga Moana - subject to resolution of the Tauranga Moana Framework through Treaty Settlement processes. | The Tauranga Moana Framework requires the development of an integrated management strategy for Tauranga Moana (Nga Tai ki Mauao). | Development of a strategic level planning document (Ngā Tai ki Mauao) to identify the vision, objectives and desired outcomes for Tauranga Moana. | Begin development work on Nga Tai ki Mauao. | Staff time funded from existing budgets. |



| | Project | Background | Description | KPI/Deliverables | Budget |
|-------|---|--|--|---|--|
| BOPRC | Region-wide planning projects | There are a number of region-wide planning projects that will apply in Tauranga Moana. These are plan reviews and plan changes in accordance with the Resource Management Act and National Policy Statements. These projects sit within BOPRC's region-wide planning programmes. | Regional Coastal Environment Plan Plan changes to the Regional Water and Land Plan: Plan change 9 - Water quantity and allocation Plan change 11 – Geothermal provisions Plan change 13 – Air Plan Plan change 14 – On-site Effluent Treatment (OSET) | Ongoing work throughout 2017/18. Updates to be provided on key planning projects that affect Tauranga Harbour and catchment. | Staff time funded from existing budgets. |
| BOPRC | Freshwater Futures – Tauranga Harbour Water Management Area | The National Policy Statement on Freshwater Management (NPSFW) is being implemented within Water Management Areas (WMAs). This involves working with communities to set water limits at a localised level to meet water quality and quantity targets for specific areas and waterways. | Development of freshwater objectives and planning regulations to manage water allocation and water quality in the Tauranga Harbour Catchment. | Begin information gathering and data collation. | Staff time funded from existing budgets. |
| BOPRC | Uretara Stream, Katikati BOPRC | There is an existing flood model for the Uretara Stream developed by BOPRC. | The purpose of this study is to update the existing Uretara Stream model or create new model and associated flood hazard maps. | The outcome will be updated flood hazard maps and design levels for the Uretara Stream. | \$60,000. |



| | Project | Background | Description | KPI/Deliverables | Budget |
|-----|-------------------------------|---|---|--|---------|
| TCC | Integrated Stormwater Project | <p>Strategic approach to addressing stormwater flooding issues across the City. There is the need for wider integration to improve the current situation across Council departments (planning/ engineering/building/ emergency management and civil defence).</p> <p>There is potential that some flood mitigation works may incorporate a water quality treatment element.</p> | <p>Council's risk management approach is:</p> <p>A "safety to persons" focused Level of Service,</p> <p>Regulation and policy amendment to ensure no increased risk occurs, and over time risk is reduced,</p> <p>Education to enable private individuals to make informed decisions,</p> <p>Residual risk and emergency management to ensure an appropriate service is provided to flood affected landowners following flood events, and</p> <p>Reactive response capacity, to aid flood affected landowners following flood events.</p> | Implement 'safety to persons' focussed level of service. | \$7.7m. |



| | Project | Background | Description | KPI/Deliverables | Budget |
|-----|------------------------|---|--|---|-------------------------------|
| TCC | Environmental Strategy | <p>Tauranga City Council's Environment Committee was established in November 2016.</p> <p>Through this committee, it has been identified that TCC lacks a citywide strategic framework that defines the outcomes it seeks for the environment, its priorities and targets. A robust evidence base on which to develop the strategic framework is also lacking.</p> <p>TCC will be developing an environment strategy that will help us maintain or improve the quality of the natural environment, including the quality of life of Tauranga residents.</p> | <p>The strategy will:</p> <p>Demonstrate kaitiakitanga (guardianship) over our environment and ensure we grow in a way that protects and enhances one of our greatest assets – our natural environment.</p> <p>Provide an evidence base for decision-making, through understanding the 'pressure, state and impact' on aspects of our natural environment. This includes understanding the views of tangata whenua, stakeholders and the community on the current state of the environment, issues and potential solutions.</p> <p>Provide a catalyst for change (internally and externally) to ensure outcomes are met.</p> | <p>A set of SMART objectives and targets will be developed through the strategy.</p> <p>This strategy will assist TCC in achieving its aspiration of becoming an internationally competitive city with a view to proving a higher standard of living for all.</p> | Funded from existing budgets. |



Science

| | Project | Background | Description | KPI/Deliverables | Budget |
|-------|---------------------------------------|--|---|---|--|
| BOPRC | State of the Environment Report | In preparation for the implementation of the National Policy statement for Freshwater (NPS-FM) in the Tauranga Harbour Water Management Area, a State of the Environment report for Tauranga Harbour will be produced. | This document will report on a small number of key indicators, rather than providing extensive scientific information. The intention is that these indicators will be easily understandable to the general public, but provide a scientifically defensible indication of ecosystem condition. | Deliver a technical report on selection and calculation of SoE indicators for estuarine areas by July 31 2017; deliver a technical report on selection and calculation of SoE indicators for Tauranga Harbour catchment areas by November 30 2017; deliver State of the Environment Report by 30 June 2018. | Staff time funded from existing budgets. |
| BOPRC | Relationships with research providers | Council has established partnerships with the University of Waikato Chair in Coastal Science, Intercoast, Manaaki Taha Moana, Bay of Plenty Polytechnic, Te Whare Wananga o Awanuiarangi and other research providers. | We will continue to maintain these strong connections and provide appropriate financial and/or in-kind support for specific projects. | In accordance with the Chair in Coastal Science Memorandum of Agreement, the University of Waikato will: <ul style="list-style-type: none"> Report to BOPRC in June 2017 and June 2018 on relevant items or issues associated with the Chair. | \$160,000 (University of Waikato Chair of Coastal Science). Staff time funded from existing budgets. |



| | Project | Background | Description | KPI/Deliverables | Budget |
|-------|---|--|--|---|--|
| BOPRC | University of Waikato PhD student funding | PhD studies are underway on science related to Tauranga Harbour, and impacts on the functioning of its ecosystems. These research projects form part of BOPRC's partnership with the University of Waikato to gain cost effective science for resource management. | Current research includes three projects (one overdue). <ul style="list-style-type: none"> • Macroalgal mats and benthic communities, • Hydrodynamics control on sedimentation within the harbour, and • Dissolved inorganic nitrogen fluxes in the Harbour. | Deliver a progress report on all BOPRC funded research projects by 30 April 2018. | \$80,000 funded from existing budgets. |
| BOPRC | Manaaki Te Awanui-MTM 2 subtidal survey of Tauranga Harbour | Funding was secured from central government to undertake a subtidal survey of Tauranga with support from BOPRC. | Project will sample subtidal channel sites throughout the harbour to describe infauna and shellfish beds along with analysis of sediment characteristics such as metal contamination grain size etc. Further information will be gained through the use of towed cameras to map the subtidal channels. This information will be used to produce a scientific report and habitat map of the entire harbour. | Deliver a full peer reviewed report and habitat map on completion. | \$33,000 funded from existing budgets. |
| BOPRC | Manaaki Te Awanui - MTM 2 Coastal Cultural Health Index | Funding was secured from central government to undertake the development of the Coastal Cultural Health Index with support from BOPRC. | Project to develop the Coastal Cultural Health Index with support from BOPRC. | Deliver report and Coastal Cultural Health Index 2020, progress reports yearly (June 2018). | \$67,000 funded from existing budgets. |




Operations

| | Project | Background | Description | KPI/Deliverables | Budget |
|--------|--|---|--|---|---|
| SHARED | Tauranga Harbour Margins Project BOPRC, TCC, WBOPDC | The project incentivises landowners along the harbour margins to undertake works that address biosecurity concerns, improves biodiversity values and encourage sustainable land management practices, regardless of who owns the land. A successful partnership has been formed with WBOPDC, TCC and BOPRC. | The project will identify, prioritise and implement works to restore Tauranga Harbour estuary margins and esplanade reserves. | An additional five new Management Plans in place. | \$132,000 BOPRC. \$50,000 TCC. \$50,000 WBOPDC. |
| SHARED | Tauranga Harbour Stream Works BOPRC, WBOPDC | Stream works are required from time to time to repair and stabilise active stream bank erosion features. The work is located outside approved river scheme zones and is mostly carried out on private land with a focus on reducing sedimentation within waterways and the harbour. | The purpose of the project is to assist landowners within the Tauranga Harbour catchment to stabilise active streambank erosion to protect property and reduce sedimentation. | Stream bank repair and stabilisation of eroding banks undertaken as and when required within budget. | \$52,000 BOPRC. \$200,000 WBOPDC. |
| SHARED | Coast care BOPRC, TCC, WBOPDC | Councils support six coast care groups in the Tauranga Harbour catchment in their endeavours to improve sand dune functions on the coastal reserve. | Councils offer advice on reducing and repairing dune damage, help facilitate activities, and supply volunteers with free resources. The resources include native dune plants, informative brochures, fertilisers and building materials for constructing temporary fences. | Identified priority areas are actively managed and maintained with support from Coast Care partners and community volunteers. | \$66,000 BOPRC. \$43,000 TCC. \$15,000 WBOPDC. |




| | Project | Background | Description | KPI/Deliverables | Budget |
|--------|---|--|---|---|---|
| SHARED | Sea lettuce management BOPRC, TCC WBOPDC | Clean-ups in the TCC area (including Mount Main Beach) are 50:50 cost shared between TCC and BOPRC. In the Western Bay District, WBOPDC pays for the cost of sea lettuce clean-ups where public amenities such as boat ramps are affected or when sea lettuce blocks stormwater outlets. Otherwise any other clean-ups in Western Bay are organised and paid for by BOPRC. | During spring and summer each year, staff carry out regular checks at known hotspots, regular abundance monitoring as part of the NERMN programme, annual negotiation (with TCC) of contracts with Revital Fertiliser Ltd (composter) and DMI Contracting Ltd (clean-up contractor) and liaison/ negotiation with landowners offering disposal sites or uses for sea lettuce. | Ongoing work. Level of response depends on the severity of the 2017/2018 bloom. Ensure contracts with clean-up contractor and receiving site operators are finalised by 31 October 2017. | \$50,000 BOPRC. \$30,000 TCC. Staff time (all 3 councils) funded from existing budgets. |
| SHARED | Litter clean-ups BOPRC, TCC | TCC and BOPRC support local schools and community groups to undertake litter clean-ups and restoration projects in estuaries, streams, drains and foreshore areas of the harbour. | The plan for 2017/2018 is to stage 10 -12 events involving upwards of 15 schools. Funding for clean-ups within the Tauranga City area is shared 50:50 between Tauranga City Council and BOPRC. Sponsorship of the programme is sought to provide additional funding. It covers such things as bus transport of school children to the clean-up site, equipment such as bags and gloves, machinery hire, dumping fees, catering and event publicity. | Ongoing work throughout the year. | \$5,000 TCC. \$5,000 BOPRC. \$10,000 Sponsored by Downer (TCC Maintenance Contractor). Staff time funded from existing budgets. |




| | Project | Background | Description | KPI/Deliverables | Budget |
|--------|---|---|--|---|---|
| SHARED | IP3 Hazardous Activities and Industries List (HAIL) activity audits BOPRC, TCC, WBOPDC | The Industrial Pollution Prevention Programme has been operating since 2007. In the Tauranga Harbour Catchment work is normally undertaken in conjunction with WBOPDC and TCC. Each year either a geographical area or a HAIL industry type is selected for auditing. | BOPRC will partner with either WBOPDC or TCC to undertake either a geographical location or industry type focused audits in 2017/2018. The scope of the audits to be undertaken has yet to be determined in conjunction with our territorial authority partners. | Ongoing work through 2017/2018. | \$25,000 BOPRC. TCC fund half the costs through staff and resources. |
| SHARED | Regional Wastewater Overflow Forum BOPRC, TCC, WBOPDC | Regional Wastewater Overflow Forum established and facilitated by BOPRC as a means to share information and ensure consistency across the region in regards to wastewater overflow mitigation and response. | Forum consists of six-monthly meetings held with all territorial authorities and Toi Te Ora Public Health. Objective: <ul style="list-style-type: none"> To share information, mitigation strategies and response procedures with a view to consistency in methods and reporting across the region. Prepare a region specific 'best practice guide' to encompass the above. | Preparation of a region specific best practice guide to encompass wastewater overflow mitigation strategies, response and reporting procedures. | Staff time only. |



| | Project | Background | Description | KPI/Deliverables | Budget |
|-------|---|---|--|--|---|
| BOPRC | Catchment Action Plan implementation | 16 catchment action plans are in place that cover all of the harbour sub-catchments. These Plans identify priorities for improving water quality, protecting biodiversity, controlling pests and reducing nutrient and sediment run-off into waterways. | Staff work with landowners and community care groups to implement the plans through funding and advice on sustainable land use and biodiversity enhancement and protection. This work includes the development of Riparian and Biodiversity Management Plans. A project is underway to refresh the catchment action plans. | 50 additional kilometres of waterway margin in the Tauranga Harbour catchments protected to reduce sediment, nutrient and/or bacterial contamination of water. Two additional High Value Ecological Sites and four community led sites where biodiversity actively managed within the Tauranga Harbour Catchment. Development and roll out of story maps to replace existing catchment action plans. | \$645,000 (Sustainable Land Use). \$249,000 (Biodiversity). |
| BOPRC | Uretara water quality investigation project | The Uretara River has a D grade for water quality. This past bathing season several very high E.coli spikes were recorded. | An investigation is required to determine the source of the E.coli. Additional monitoring locations throughout the catchment will be monitored to isolate the tributaries to determine the areas where Land Management efforts should be directed. | Develop monitoring plan and commence collection. | \$20,000 from existing operational budget (Sustainable Land Use). |
| BOPRC | Kaiate Taskforce | A permanent health warning was issued by Toi Te Ora for Kaiate Falls and stream in Welcome Bay early in 2015 due to unsafe levels of E. coli bacteria at this site. This is most likely due to run-off from surrounding farmland and faecal matter from birds that nest and feed above the falls. The warning remains in place. | A task force has been established to look at the continued problem of bacterial contamination in the Kaiate stream. The purpose of the taskforce is to recommend a plan of action to make Kaiate Falls and stream swimmable again. | Options paper prepared by October 2017. Plan of Action prepared by December 2017. | Staff time only. |




| | Project | Background | Description | KPI/Deliverables | Budget |
|-------|---|---|---|--|--|
| BOPRC | Marine Biosecurity | Marine Biosecurity is a regional programme of work aimed at preventing spread through the region. The programme is particularly relevant to Tauranga Harbour as two marine pests (Mediterranean fanworm and clubbed tunicate) were detected in the harbour in 2013. These pests have the potential to impact marine biodiversity, kai moana, aquaculture and recreational enjoyment by out-competing native filter-feeders and fouling boats and equipment. | The project implements the Marine Biosecurity Management Plan which has four work streams: stakeholder communication, surveillance, incursion management and the development of a Small Scale Management Plan (SSMP) under the Biosecurity Act. | Continued delivery of an intensive surveillance programme through 2017/2018. Implementation of response plans where required. Implementation of the SSMP for fanworm and clubbed tunicate. | \$171,360. |
| BOPRC | Ongoing support of the Kaimai Mamaku Catchments Forum | The Kaimai Mamaku Catchments Project is a joint agency initiated project involving BOPRC, DoC and Waikato Regional Council. The project encompasses Tauranga Harbour and Waihou River catchments. A Forum was formed as part of the project to help focus effort and ensure genuine community involvement. It involves six city and district councils, 13 iwi and the landowners who live within those catchments. | The Forum brings together a diverse range of stakeholders that make a difference to the wellbeing of Tauranga Harbour, its catchment and the communities that rely on it. Regional Council supports the Forum's efforts to collaborate on catchment challenges and contribute to our planning work. | Continued participation in the joint agency project. Continued support of the Forum. | \$40,000 (contribution). Staff time funded from existing budgets. |
| BOPRC | Audit of mangrove distribution and associated issues for tangata whenua | Much of our knowledge on community views of mangrove distribution comes from the work estuary care groups do and the areas they manage. We have limited understanding of tangata whenua views of current mangrove distribution. | Assess where mangroves are in the Harbour and scope the views of tangata whenua on this distribution. | Report. | \$40,000. |



| | Project | Background | Description | KPI/Deliverables | Budget |
|-------|------------------------------------|--|--|---|--|
| BOPRC | Ongoing estuary care group support | BOPRC supports 11 estuary care groups in their efforts to manage mangroves and complete restoration work around Tauranga Harbour estuaries. | We will continue to support the work being completed by the Estuary Care groups. This includes pest control, restoration planting, weed control, mangrove management, and working bee support and training. | Estuary Care groups are satisfied with the level of service they receive from Council. | \$40,000. |
| BOPRC | Seedling mangrove management | Mangrove seedlings are encroaching on the open inter-tidal areas of Tauranga Harbour. Council has agreed to assist with keeping these areas clear. | The project will mechanically remove mangrove seedlings in open inter-tidal areas from up to 12 estuaries across Tauranga Harbour. It is planned that the work will be done by an innovative purpose-built hovercraft, which is in the final stages of development and testing. | Up to 600 ha per annum of mechanical mangrove seedling maintenance. | \$200,000. |
| BOPRC | Mature mangrove management | Resource consents have provided for limited removal of mature mangroves by Estuary Care groups since 2009. | Council agreed to continue its support to established estuary care groups with mangrove management in the Long Term Plan 2015-2025. | Mature mechanical mangrove management as required and where resource consent is in place. | \$30,000. |
| BOPRC | Opureora Channel dredging | The 2016/2017 project to dredge the Opureora Channel to provide for all tide access to Matakana Island has been delayed to July-August 2017. Council has agreed to carry over unspent 2016/2017 budget money so that the dredging can proceed early in the 2017/18 year. | The project for 2017/2018 involves: <ul style="list-style-type: none"> • Mobilising equipment and establishing on site in June 2017. • Dredging the channel before closure of the consent window for works on 31 August 2017. | Complete dredging by 31 August 2017. | \$750,000. Staff time funded from existing budgets. |



| | Project | Background | Description | KPI/Deliverables | Budget |
|-------|---|--|--|---|---|
| BOPRC | 24/7 Oil spill response and Navigation Safety | Regulatory requirement in accordance with maritime rules. We manage navigation safety to ensure the regions navigable waterways are kept safe. We manage aquatic activities to reduce conflict from competing uses. We also respond to oil spills to protect our coastal environment and habitats. | Provide 24/7 response to incidents. Identify spiller to recover costs. Carry out oil spill response responsibilities, respond appropriately to marine oil spills, manage mooring areas and carry out navigation safety functions across the region. | Long Term Plan KPI: Percentage of time to maintain 24/7 response to navigational incidents and maritime oil spills is in place. | Funded from existing Maritime budgets. |
| BOPRC | Audit on Port and Harbour Safety Management systems | Port and Harbour Management Systems Work Group carried out a one day desk top audit in December 2016. | Two day desk top internal audit carried out by Maritime. | Audit to be completed between October – November 2017. | Funded from existing Maritime budgets. |
| BOPRC | Navigation and Safety Bylaw | The Navigation and Safety Bylaw was reviewed in 2016 and came into effect 1 July 2017. | Updating signage and providing education to the public. | Ongoing education throughout 2017/2018. Signage updated by November 2017. | \$15,000. |
| BOPRC | Ongoing Regulatory Compliance work: compliance monitoring, complaint response and enforcement | Regulatory Compliance core work involves monitoring all consents issued across the region including those that are operative in the Tauranga Harbour Catchment, responding to complaints/incidents via a 24 hour Pollution Hotline. In cases of serious breaches of regional plan rules or the RMA, enforcement action may follow. | Regulatory Compliance staff undertake compliance of operative consents as per the monitoring conditions outlined in the consent conditions. | Compliance and impact monitoring of sites/consents to be in accordance with Council Charges Policy. Report on compliance air discharges on consented industrial sites. Long Term Plan KPI: All urgent complaints to the Pollution Hotline are responded to within 12 hours and all non-urgent complaints are responded to within three working days. | Funded from existing Regulatory Compliance budgets. |



| | Project | Background | Description | KPI/Deliverables | Budget |
|-------|--|--|--|--|---|
| BOPRC | Identification of discharge points phase two | In 2017 phase one - identification of discharge points was carried out by mapping and ground truthing between Ōmokoroa to Aongatete to record stormwater discharge points into Tauranga Harbour that were previously not marked or mapped or included in the comprehensive stormwater consent. | Phase two – The Regulatory Compliance team proposes a summer student project which would involve two students undertaking field work surveying the harbour margins from Aongatete heading north to identify all private drainage and discharge points into Tauranga Harbour, collecting data on drain size, length and potential flow velocity, which will be used to determine sediment loading from private drains into Tauranga Harbour. | Recording discharge points around the Harbour margin in Western Bay. Complete identification of illegal structures. Identify fish passage. Phase two of this project will only be viable once it has been determined the information collected in Phase one has scientific validity and is worthy data to be collecting. | Funded from existing budgets. |
| TCC | Stormwater Management | Three Comprehensive Stormwater Consents (CSCs) are held by TCC to authorise structures and discharges associated with the public stormwater network. | <p>The Papamoa CSC requires stormwater monitoring within the Wairakei Stream and at the point of discharge into the Kaituna River when this is operational.</p> <p>Maranui/ Mangatawa CSC requires stormwater monitoring at the point of discharge from the Maranui Wetland, and of sediment downstream of the wetland.</p> <p>The Citywide CSC requires monitoring of stormwater and freshwater/marine water receiving environments at a large number of locations across the city.</p> | <ul style="list-style-type: none"> Long-term stormwater and receiving environment monitoring data for stormwater catchments across the city. Annual or five yearly monitoring reports presented to stakeholders and consenting authority from which to determine the requirement for further Catchment Management Plans or stormwater treatment. | \$150,000 for monitoring. Additional funding from existing budgets. |



| | Project | Background | Description | KPI/Deliverables | Budget |
|-----|-----------------------|--|---|--|--|
| TCC | Wastewater Management | A number of resource consents are held by TCC to authorise structures and discharges associated with the wastewater network. | <p>Resource Consent 62878 is the comprehensive discharge consent for the combined effluent flows from the City's wastewater treatment plants (Chapel Street and Te Maunga).</p> <p>The above consent requires the establishment of a "Wastewater Management Review Committee" whose purpose is to make recommendations on operation of the Wastewater Scheme in relation mitigating environmental and cultural effects of the wastewater scheme.</p> <p>A range of other consents authorise discharges to water and air and the occupation of space in the CMA.</p> <p>TCC has a Wastewater management Strategy which includes environmental monitoring, network analysis and maintenance, inflow and infiltration reduction, and overflow prevention and response.</p> | <ul style="list-style-type: none"> • Ongoing work through 2017/2018. • Complete review of the Environmental Mitigation and Enhancement Fund. • Review of Wastewater Overflow prevention and response procedures. • Ancillary works for the Southern Pipeline to be completed in the Paper Road by the end of August. • Complete Memorial Park Pump Station "wet" commissioning. • Harbour crossing for the Southern Pipeline to be completed by December 2017. | <p>Resource consent monitoring \$81,500.</p> <p>Consent compliance operating costs. \$157,100.</p> <p>WW Mitigation and Enhancement Fund \$440,000.</p> <p>Additional funding from existing budgets.</p> <p>Southern Pipeline \$18m.</p> |



| | Project | Background | Description | KPI/Deliverables | Budget |
|-----|----------------------------------|---|---|---|---|
| TCC | Three Waters Education Programme | Education programme 'Waterline' implemented to educate the public on water conservation and wastewater reduction. Reducing the volume of wastewater and local sewer overflows. | <p>The programme is implemented in the following ways:</p> <ul style="list-style-type: none"> • Domestic visits, • Modules presented in kindergartens, primary and intermediate schools, • Presentations at home shows/expos, • Media and signage through the city. | Ongoing work through 2017/2018. | \$70,000. |
| TCC | Pollution Prevention Programme | The programme is one of the key means by which TCC manages contaminant inputs into the stormwater network and thus assist in compliance with its Comprehensive Stormwater Catchment Consents. | <p>The programme carries out the following core functions:</p> <ul style="list-style-type: none"> • Spill response, • Targeted industrial audits, • Review of building and resource consents, • Public education. <p>The programme is underpinned by a Stormwater Bylaw and a Delegation of Enforcement Powers under the RMA.</p> | <p>Completion of industry or area specific audit reports summarising the outcome of audits, issues identified and sites for referral to BOPRC for consent consideration and/or enforcement.</p> <p>Urgent Pollution Incidents must be attended within 1 hour (Maintenance contractors KPI).</p> | \$220,000 for Pollution Prevention Programme. |



| | Project | Background | Description | KPI/Deliverables | Budget |
|--------|---|---|--|--|--|
| TCC | Harbour margin parks ecological restoration | Ongoing management of significant harbour ecological park areas, such as Waikareao Estuary margins, Matua Salt Marsh, Waimapu Estuary margins, Wairoa esplanade reserves. | Plant and animal pest control and native planting to improve ecological integrity. Beach sand nourishment. Sea-walls. Boardwalks. | Compliance and impact monitoring of sites/activity to be in accordance with City Plan and restoration plans for each site. | \$200,000 plus additional funding from TCC operational budgets for restoration: \$723,471 per annum for sea walls. \$50,000 per annum for boardwalks. \$22,000 per Annum for beach nourishment. |
| TCC | Beaches Bylaw Review | The Beaches Bylaw is currently up for review. | The purpose of the bylaw is to control activities that are likely to affect public safety, minimise nuisance on the beach, and ensure the uses of the beach are primarily for recreational purposes. | Review of the Bylaw is to be carried out in the 2017/2018 financial year. | Funded from existing budgets. |
| WBOPDC | District wide natural environment support | Ability to sponsor activities with community involvement. | Support for the community/volunteer ecological groups. | Key community groups are encouraged to continue to be viable in the future. | \$5,000. \$39,000. Staff time funded from existing budgets. |



| | Project | Background | Description | KPI/Deliverables | Budget |
|--------|--|---|--|---|---|
| WBOPDC | Ongare Wastewater Scheme | Ongare Point remains a maintenance zone under the On-Site Effluent Treatment (OSET) Plan. Rules require connecting to reticulation, upgrading or applying for a Regional Council consent. | Reticulated system required to reduce seepage to the harbour marine environment. | Reticulated community system by 2017. | \$1,700,000 funding for actual construction planned in 2017/2018 with additional BOPRC funding \$618,000). |
| WBOPDC | Te Puna West Wastewater Scheme | Te Puna West remains a maintenance zone under the OSET Plan. Rules require connecting to reticulation, upgrading or applying for a Regional Council consent. | Reticulated system required to reduce seepage to the harbour marine environment. | Reticulated community system by 2017. | \$2,600,000 funding for actual construction planned in 2017/2018, with additional BOPRC funding \$1,045,000). |
| WBOPDC | Katikati wastewater treatment investigations | Katikati wastewater treatment plant discharges treated wastewater via a pipeline to an ocean outfall off Matakana Island. | Pipeline has existing capacity and life expectancy till 2037. | Re-consenting of the pipeline and outfall by November 2017. | \$100,000. |
| WBOPDC | District-wide fencing subsidies | Support Regional Council land protection mechanisms. | Fencing subsidies for Biodiversity and Riparian Management Plans. | Ongoing work through 2017/2018. | \$51,500. |



| | Project | Background | Description | KPI/Deliverables | Budget |
|--------|----------------|---|--|---|--------------------------------------|
| WBOPDC | Seawalls | | Matahui Esplanade Reserve slip/erosion mitigation in conjunction with adjoining property owners. | Obtain required consents from Regional Council. | Funded by adjoining property owners. |
| WBOPDC | Ōmokoroa slips | Recent rain fall events have triggered a number of significant slip events with five houses currently evacuated. EQC is involved. | Ongoing monitoring of significant slips along foreshore. | Monitor slips. Update public on any progress. | No specific funding in place. |
| WBOPDC | Cycleway | Boardwalks and trail development along the harbour margins across esplanade reserve/paper roads. | Ōmokoroa to Tauranga cycleway around harbour margins requiring consents for work in or near the CMA. | Required consents obtained. | \$5,000. |
| WBOPDC | Boat ramps | Upgrade to Omokora and Opureora boat ramps to accommodate a new larger ferry/barge. | Widening of boat ramps and dredging to accommodate larger ferry/barge. | Consents obtained. Physical works completed by 1 October 2017. | \$500,000. |



Financials

| Bay of Plenty Regional Council Budget 2017/18 | |
|---|--------------------|
| Maritime | \$847,570 |
| Tauranga Catchments | \$2,814,000 |
| Integrated planning | \$340,000 |
| Engineering | \$190,000 |
| Pollution Prevention | \$500,000 |
| Science | \$402,271 |
| Marine Biosecurity | \$171,360 |
| Total annual budget | \$5,265,201 |

| Tauranga City Council Budget 2017/18 | |
|---|---------------------|
| Recreation and Natural Environmental | \$995,471 |
| Stormwater Pollution Prevention | \$570,000 |
| Wastewater Effects Mitigation | \$18,678,600 |
| Integrated Stormwater Project | \$7,700,000 |
| Tauranga Harbour Inundation and Coastal Erosion | \$185,000 |
| Total annual budget | \$28,129,071 |

| Western Bay of Plenty District Council Budget 2017/18 | |
|---|--------------------|
| District Wide Fencing Subsidies and District Wide Natural Environmental Support | \$72,500 |
| Tauranga Catchments Contribution (Coast Care, HMP's, Stream Works and Inundation and Coastal Erosion) | \$80,000 |
| Te Puna West Wastewater Scheme | \$2,600,000 |
| Ongare Wastewater Scheme | \$1,700,000 |
| Total annual budget | \$4,425,500 |

Appendix Two

Tauranga Moana Programme Dashboard August 2017



Tauranga Moana Dashboard August 2017

| | | | | | | | |
|--|---------------------|--------------------|---|---------------------|--------|--------|----------|
| Programme Manager | | Sarah Omundsen | | As of meeting | Aug-17 | Green | |
| Project Sponsor | | Chris Ingle | | Previous RAG status | May-17 | Green | |
| Category | Previous RAG Status | RAG Status Current | Comment on any RAG where status is not Green. | | | | |
| Overall | Green | Green | | | | | |
| Schedule | Green | Green | | | | | |
| Scope | Green | Green | | | | | |
| Resources | Green | Green | | | | | |
| Budget | Green | Green | | | | | |
| No. Annual Work Plan Projects 2017/18 | | | | | | | |
| SHARED | | | | | Scope | Budget | Schedule |
| 1 Tauranga Moana 2016/17 Annual Report | | | | | Green | Green | Green |
| 2 Tauranga Moana Annual Work Plan 2018/19 | | | | | Green | Green | Green |
| 3 Tauranga Harbour Inundation and Coastal Erosion | | | | | Green | Green | Green |
| 4 Tauranga Harbour Margins Project | | | | | Green | Green | Green |
| 5 Sea Lettuce Management | | | | | Green | Green | Green |
| 6 Litter Clean-ups | | | | | Green | Green | Green |
| 7 IP3 HAIL Audits | | | | | Green | Green | Green |
| BAY OF PLENTY REGIONAL COUNCIL | | | | | Scope | Budget | Schedule |
| 1 Matauranga Māori for Tauranga Harbour capacity building | | | | | Green | Green | Green |
| 2 Manaaki Taha Moana MTM 2 sub tidal survey of Tauranga Harbour | | | | | Green | Green | Green |
| 3 Manaaki Taha Moana MTM 2 Coastal Cultural Health Index | | | | | Green | Green | Amber |
| 4 State of the Environment Report | | | | | Green | Green | Amber |
| 5 Kaiate Task Force | | | | | Green | Green | Green |
| 6 Kaimai Mamaku Catchments Forum | | | | | Green | Green | Green |
| 7 Seedling mangrove management | | | | | Green | Green | Green |
| 8 Opureora Channel Dredging | | | | | Green | Green | Green |
| 9 Audit of mangrove distribution/associated issue for tangata whenua | | | | | Green | Green | Green |
| 10 Audit on Port and Harbour Safety Management systems | | | | | Green | Green | Green |
| 11 Flood modelling Uretara Stream, Katikati | | | | | Green | Green | Green |
| TAURANGA CITY COUNCIL | | | | | Scope | Budget | Schedule |
| 1 Integrated Stormwater Project | | | | | Green | Green | Green |
| 2 Environmental Strategy | | | | | Green | Green | Green |
| 3 Wastewater Management | | | | | Green | Green | Green |
| 4 Stormwater Management | | | | | Green | Green | Green |
| 5 Beaches Bylaw Review | | | | | Green | Green | Green |
| WESTERN BAY OF PLENTY DISTRICT COUNCIL | | | | | Scope | Budget | Schedule |
| 1 Ongare Wastewater Scheme | | | | | Green | Green | Green |
| 2 Te Puna West Wastewater Scheme | | | | | Green | Green | Green |
| 3 Cycleway | | | | | Green | Green | Green |

| | |
|---|--|
| Programme Progress | |
| <ul style="list-style-type: none">Wastewater overflow protocols have been provided to tangata whenua for feedback.Southern Pipeline Project is progressing with the paper road pipeline works completed.Applications have been lodged with BOPRC and WBOPDC consent authorities to extend the Opureora Channel dredging "works end" date in the consents from 31 August to 15 September to allow for time lost due to delays to starting date.Completion of first hovercraft mowing season with approximately 27 ha of seedlings removed.Site preparation complete for Opureora Channel dredging operationTinopai to Lynley Park cycleway opened with good usage to date | |
| Programme Updates | |
| <ul style="list-style-type: none">51 compliance inspections carried out and 13 complaints responded to during July.Identification of discharge points phase two project won't be going ahead. It has been decided the resources are better utilised assessing impacts of discharges from natural waterways rather than man-made drains at this stage.Nine Coast Care events held. The aim for the remainder of the season is to plant 33,000 dune plants.Keeping a close eye on unusual winter sea lettuce accumulations through the middle part of the harbour. No clean-ups required.Hovercraft project de-brief held to determine next steps for the mechanical seedling maintenance project.Quality Assurance workshop held for Tauranga Harbour Coastal Hazard Study to confirm the contractors methodology is in accordance with best practice.Freshwater Futures - information gathering and data collation has begun with some work by BOPRC Geospatial to map existing land use, and work to ensure data is accessible.Balance Agri-nutirents has installed and will commission their new catalytic converter at the super phosphate manufacturing site (Harbour Bridge) which is expected to cause a major reduction in SO2 discharges.A vessel found with Mediterranean fanworm has been hauled out and cleaned by its owner.Scoping meeting held with Ngāi te Rangi re: mangrove distribution audit. Feedback to be sought from Kaitiaki Forum, as well as Hungahungatoroa marae on case study at Waipu Bay.Hovercraft mowing undertaken in Welcome Bay including bird and benthic monitoring. 13 ha achieved.Kaiate Falls site visit to look at key risk areas and options for management.Kaimai Mamaku Catchment Forum sustainability report and draft Operational Plan received.July E-newsletter circulated. | |
| Programme upcoming Activities | |
| <ul style="list-style-type: none">Waikareao Estuary Clean-up Day scheduled for 10 August.Gathering baseline data and community engagement for the TCC Environmental Strategy.Commencing five yearly review report for citywide Comprehensive Stormwater Consent.Exploring ways of mapping changes of mangrove distribution over time for iwi.Planting bee in Matahoroa Gully scheduled for 12 August.Mangrove seedling removal to be undertaken by contractors in estuaries where there were too few seedlings to warrant use of the hovercraft.Deploying five pressure sensors to collect calibration data for the Tauranga harbour inundation modelling.Continued monitoring of open winter earthworks sites.Continued investigations into illegal discharges from industrial sites in Maleme Street and Mount Industrial area which may lead to enforcement action including prosecution.Preparing a business case for flow and rainfall gauging for the Uretara Stream project.WBOPDC to consider and adopt a Harbour Erosion Policy on 16 August.Preparations for the upcoming Maritime NZ audit on the hovercraft.Kaimai Mamaku Forum briefing with BOPRC Councillors, WRC Councillors and Conservation Board scheduled 18 August.Adoption of tender for new cycleway bridges crossing several estuaries.Complete Opuereroa and Omokoroa boatramp upgrades. | |

Objective ID: A2669004

Report To: Tauranga Moana Advisory Group

Meeting date: 24 August 2017

Report From: Ruth Feist, Senior Planner, Bay of Plenty Regional Council

Tauranga Moana Programme in Long Term Plans 2018-2028

1 Purpose

To provide the Tauranga Moana Advisory Group with an overview of work being planned for the Tauranga Moana Programme in the three councils' Long Term Plans for 2018-2028.

It is recommended that the Advisory Group:

1. Receive the report "Tauranga Moana Programme in Long Term Plans 2018-2028".

2 Long Term Plans

Under the Local Government Act, every council must prepare a Long Term Plan. The main objective of a Long Term Plan (LTP) is to describe the council's proposed activities and community outcomes for a 10 year period, and provide a basis for accountability to the community. LTP's outline the financial commitments to delivering programmes (such as the Tauranga Moana Programme), and implementing strategies and plans. While an LTP covers 10 years, these documents are reviewed every three years.

2.1 Process and Timing for 2018-2028 LTPs

The following table provides an overview of the process and timing for developing and finalising the 2018-2028 LTPs. Each council is running their own timetable (with more specific dates) within this general process.

Table: Overview of LTP process and timing

| Timing | Task |
|----------------------------|---|
| 2017 | |
| From February | Councils each develop their: <ul style="list-style-type: none">• Vision• Community outcomes• Objectives• Levels of Service• Infrastructure strategies• Asset management plans• Financial principles |
| From May | Councils develop work plans for their activities (includes Tauranga Moana Programme) |
| May to December | Iterative process to refine activity work plans to meet community outcomes, objectives, levels of service, infrastructure and asset management requirements, and budget limits |
| 2018 | |
| February | Councils adopt LTP consultation documents |
| Late February to Early May | Consultation, submissions, hearings |
| May | Finalising LTP |
| By 30 June | Councils adopt their respective LTPs |

3 Tauranga Moana Programme

3.1 Vision and Outcomes

The Tauranga Moana Programme vision and outcomes are shown below. The Long Term Plan process does not seek to change these.

Vision

A healthy and thriving harbour that contributes to our wellbeing today and in generations to come.

Outcomes sought

Ecological Health – The natural environment is healthy and resilient, supporting thriving native wildlife and kaimoana.

Amenity – The harbour and catchment are able to be used and appreciated.

Cultural – Mana whenua and Mana moana is recognised, kaitiakitanga is enabled and cultural values are protected.

Sustainable land management – Land and water use is managed to maintain and/or improve the health of the harbour and catchment.

Recognising economic importance – The economic value of access and use is retained for the harbour and catchment.

Community – Local communities have easy access to information about the harbour and catchment values and issues, and are actively supported to care for values that are important to them.

4 **Work planned for 2018-2028**

At this stage, the work planned for the Tauranga Moana Programme over 2018-2028 by the three partner councils:

- Continues the commitment to the Programme and joined-up work.
- Contributes to all the Programme outcomes.
- Is a mix of ongoing work and discrete projects.
- Largely builds on current work streams.
- Transitions some existing work from development or monitoring into implementation phase.

The planned work is outlined in Appendix 1 to this report, and will be explained in a presentation at the Tauranga Moana Advisory Group meeting.

There is some work by Bay of Plenty Regional Council that is region-wide and will affect Tauranga Moana. These projects are included in Appendix 1, but are budgeted at the regional level.

5 **Conclusion**

As at July 2017, work planned over 2018-2028 continues the strong commitment by the three councils to the Tauranga Moana Programme and working with iwi/hapū. There is a range of 'business as usual' (or ongoing) work and discrete projects that will contribute to achieving the outcomes sought for Tauranga Harbour and the catchment.

Appendix 1: Tauranga Moana Programme – work planned for Long Term Plans 2018-2028

| Processes and projects | Responsibility | Timing | Outcomes the work contributes to: |
|--|--------------------|-----------------------------------|---|
| <p>Tangata whenua engagement, involvement and capacity building</p> <ul style="list-style-type: none"> • Work spans all aspects of the Tauranga Moana programme, particularly catchment management, community and education, planning, 3 waters, science, and maritime • Project or consent-based engagement and involvement • Supporting Tauranga Moana Iwi Management Plan implementation | BOPRC, TCC, WBOPDC | Ongoing through 2018-2028 | <ul style="list-style-type: none"> • Cultural • Ecological Health • Amenity • Sustainable land management • Community |
| <p>Catchment management</p> <ul style="list-style-type: none"> • Water supply catchment protection • Implementation of sub-catchment management plans • Biosecurity - land and marine • Riparian retirement and funding on harbour margins and streams/rivers • Coast care • Sea lettuce removal • Stream and estuary clean ups • Support Kaimai-Mamaku Catchments Forum • Biodiversity protection • Parks restoration (TCC) • Mangrove management • Support Care Groups | BOPRC, TCC, WBOPDC | Ongoing through 2018-2028 | <ul style="list-style-type: none"> • Ecological Health • Amenity • Cultural • Sustainable land management • Recognising economic importance • Community |
| <p>Natural hazards and climate change</p> <ul style="list-style-type: none"> • Tauranga Harbour inundation and coastal erosion studies • Natural Hazard charter • Emissions inventory | BOPRC, TCC, WBOPDC | Series of projects over 2018-2028 | <ul style="list-style-type: none"> • Community |
| <p>Planning</p> <ul style="list-style-type: none"> • Co-governance document (subject to Treaty claim settlement) • Region-wide plans and plan changes – coastal, air, water, land (BOPRC) • TCC Environment Strategy and Action Plan • Tauranga Harbour Water Management Area to implement National Policy Statement on Freshwater Management for water quality and water allocation (BOPRC) – to begin 2017/18 • District and City Plans, and structure plan requirements to achieve a healthy environment | BOPRC, TCC, WBOPDC | Series of projects over 2018-2028 | <ul style="list-style-type: none"> • Ecological Health • Amenity • Cultural • Sustainable land management • Recognising economic importance • Community |

| Processes and projects | Responsibility | Timing | Outcomes the work contributes to: |
|--|--------------------|---|--|
| 3 Waters (water supply, wastewater, stormwater) <ul style="list-style-type: none"> Urban stormwater monitoring, mitigation, catchment planning and management (catchment-specific) Wastewater reticulation – Ongare Point, Te Puna West, Matapihi Wastewater level of service review relating to overflows, network and treatment (TCC) Wastewater overflow management plan (TCC) Wastewater Overflow Forum (Shared) Cultural Environmental Monitoring Plan – wastewater and stormwater at Rangataua Bay (TCC) | TCC, WBOPDC | Ongoing work and discrete projects over 2018-2028 | <ul style="list-style-type: none"> Ecological Health Cultural Sustainable land management Recognising economic importance Community |
| Science <ul style="list-style-type: none"> State of the Moana Report Natural Environment Regional Monitoring Network (NERMN) monitoring Tauranga Harbour long term science plan Research funding - University of Waikato Coastal Chair (Masters and PhD), Matauranga Māori | BOPRC | Ongoing work and discrete projects over 2018-2028 | <ul style="list-style-type: none"> Ecological Health Cultural Sustainable land management Community |
| Pollution prevention <ul style="list-style-type: none"> Compliance monitoring Pollution Hotline and complaint response Industrial pollution prevention programme (audits) Mount industrial and Port of Tauranga air quality monitoring | BOPRC, TCC | Ongoing work and discrete projects over 2018-2028 | <ul style="list-style-type: none"> Ecological Health Cultural Sustainable land management Recognising economic importance Community |
| Maritime <ul style="list-style-type: none"> Navigation safety Coastal recreation and access facilities (e.g. boat ramps) Boat lease to Ngāi Te Rangi | BOPRC, TCC, WBOPDC | Ongoing work and discrete projects over 2018-2028 | <ul style="list-style-type: none"> Amenity Cultural Recognising economic importance Community |
| Communication and education <ul style="list-style-type: none"> Tauranga Moana Communications Strategy (includes newsletter and events) 3 Waters education Learning through discovery programme for school years 5-8 (forest, wetland, coastal, estuary) | BOPRC, TCC, WBOPDC | Ongoing through 2018-2028 | <ul style="list-style-type: none"> Cultural Community |

| Processes and projects | Responsibility | Timing | Outcomes the work contributes to: |
|--|---|---------------------------|---|
| Administration of Tauranga Moana Programme <ul style="list-style-type: none"> • Support of Tauranga Moana Advisory Group • Annual Work Plan • Annual Report | BOPRC provides administration support for Programme | Ongoing through 2018-2028 | <ul style="list-style-type: none"> • Community |



Te Hunga Takutai o Aotearoa

**NEW ZEALAND
COASTAL SOCIETY**



Rena Recovery



Ongatoro/Maketū Estuary

2017 NZCS Conference

Changing Coasts / Papaki kau ana ngā tai o Mauao

- Keep up to date with new coastal management advances made around NZ.
- Meet with peers from around NZ and soak up the Conference dinner and awards night.
- Take a field trip cruising on the Tauranga Harbour or a roady out east to epic estuary restoration projects.
- Engage in the Coastal Careers Breakfast for young professionals and students

www.coastalsociety.org.nz to register



Trinity Wharf Tauranga

Trinity Wharf – Tauranga Moana

15 – 17 November 2017