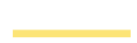



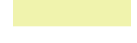



Water Quality Classification

-  Fish Spawning Purposes Upper Tarawera River
-  Fish Purposes Lower Tarawera River
-  Natural State (Lake)
-  Natural State (River)
-  Managed State (Lake)
-  Modified Watercourses with Ecological Values
-  Drain Water Quality
-  Aquatic Ecosystem (Bay of Plenty)
-  Contact Recreation
-  Water Supply
-  Bay of Plenty Regional Base Line
-  Unclassified Water Body

-  Environment Bay of Plenty Regional Bdy
-  State Highway
-  Roading (metal surface)
-  Indigenous Forest
-  Planted Forest
-  Urban Area

Checked: Environmental Planning Section, Environmental Planning,
 Environment Bay of Plenty.
 Approved: Bay of Plenty Regional Council, Environment Bay of Plenty.
 Date: November 2008

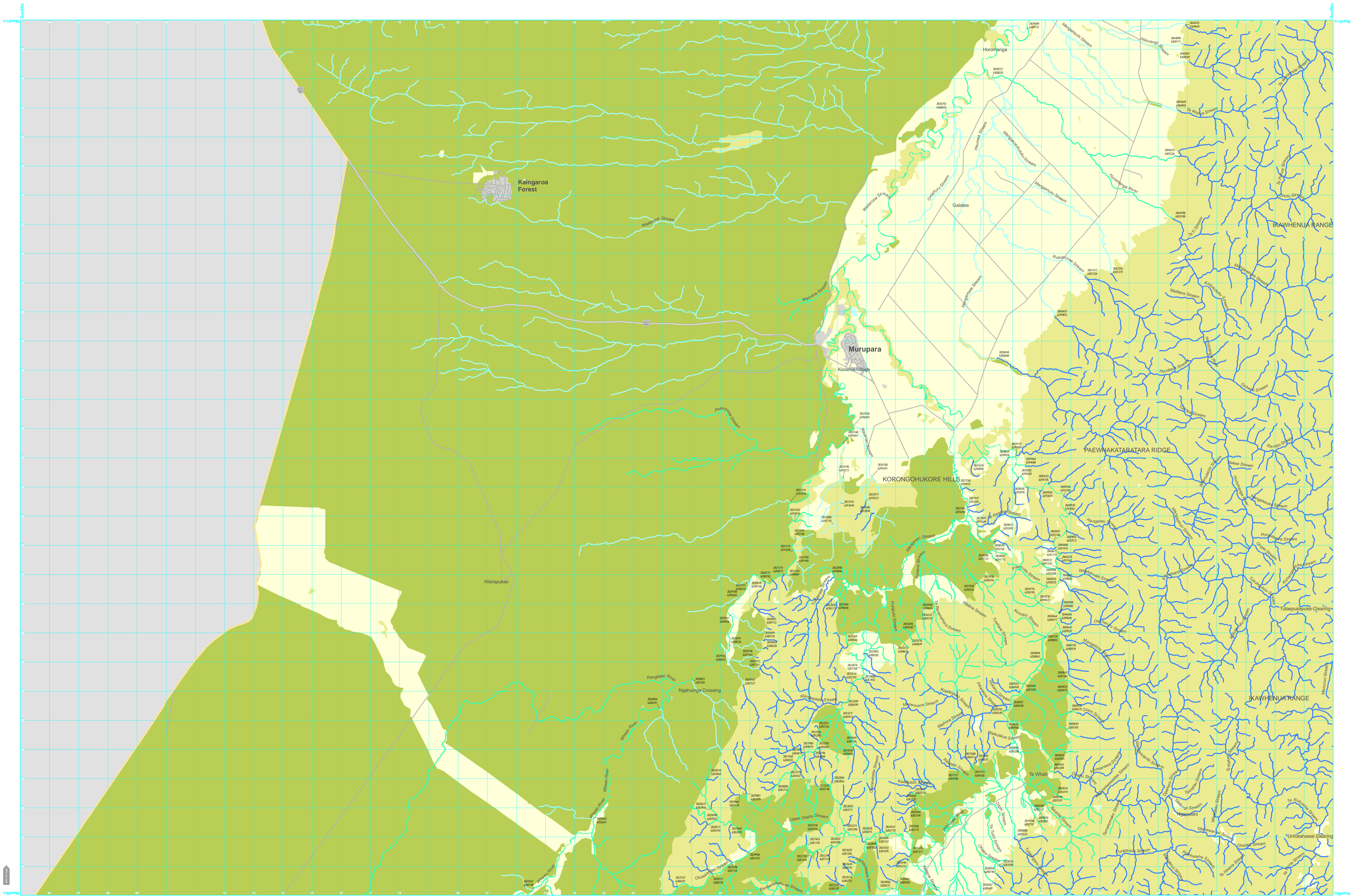
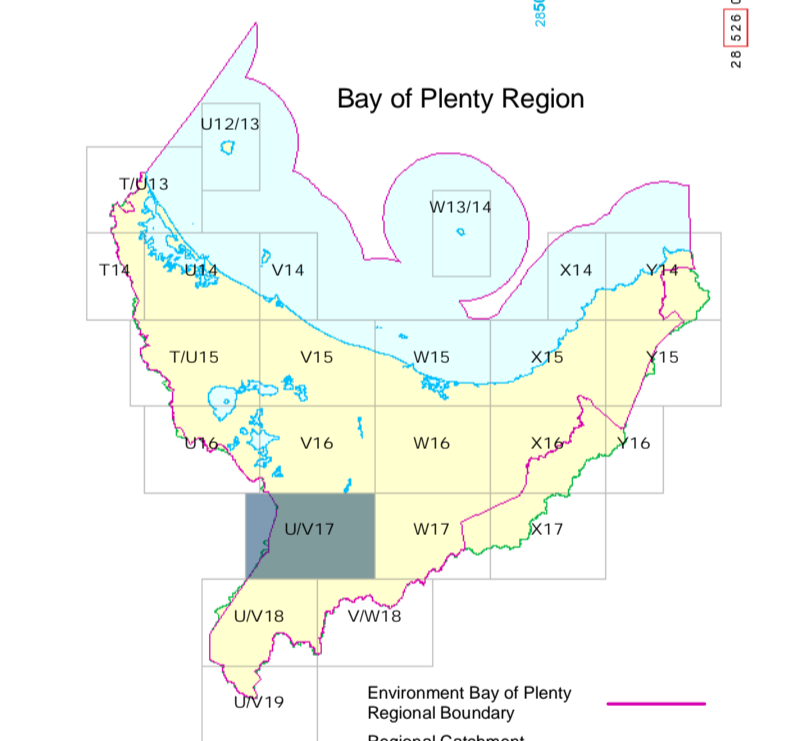
North Points
 Magnetic North on this map is 20°26' E of Grid North during 2000
 increasing at the rate of approximately 1/2" over 33 years.

Projection and Grid Information
 This map is drawn on the New Zealand Map Grid Projection, a
 minimum error conformal projection. The grid is the New Zealand
 Grid, showing co-ordinates in metres in terms of the Geodetic
 Datum 1949, based on the International (Hayford) Spheroid.

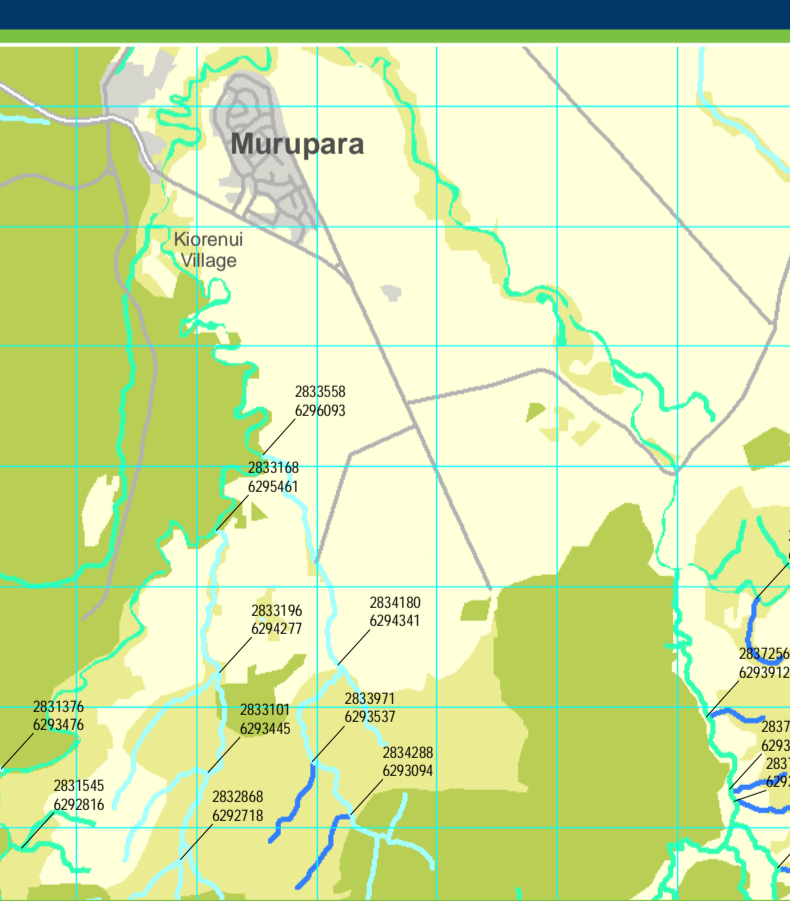
Grid Reference Reading
 The grid reference on this map (1:50 000) can only be read to the nearest 100 metres

Full grid reference (7 digits)
 eg 2835000 6281200
 (Easting, Northing)

Short grid reference (3 digits)
 eg W15 S28 613
 (Sheet number, Easting, Northing)



Water Quality Classification Map
 Murupara



Working with our communities for a better environment
 E mahi ngātahi o pāi ā ke ai te tāiao

Projection and Grid Information
 This map is drawn on the New Zealand Map Grid Projection, a minimum error conformal
 projection. The grid is the New Zealand Map Grid, showing co-ordinates in metres in terms of
 the Geodetic Datum 1949, based on the International (Hayford) Spheroid.

