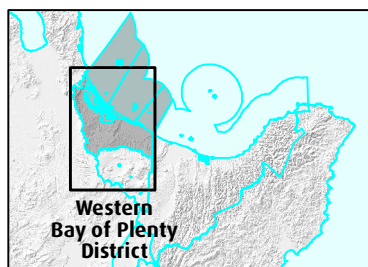


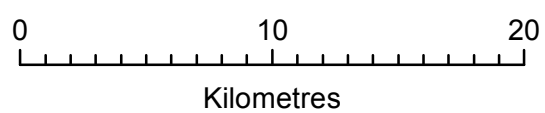
Projection and Grid Information
 This map is drawn on the New Zealand Map Grid Projection, a minimum error conformal projection. The grid is the New Zealand Map Grid, showing co-ordinates in metres in terms of the Geodetic Datum 1949, based on the International (Hayford) Spheroid.

Copyrights
 © Sourced from Land Information New Zealand data.
 CROWN COPYRIGHT RESERVED.
 © Bay of Plenty Regional Council 2014



Statutory Acknowledgements within the Western Bay of Plenty District

Scale = 1:300000



Map 2
C2450

Printed 27/02/2015