

**Upper Rangitaiki River
Erosion Hazard Zone**

1:50 000
Sheet U/V18
Taupo/Whirinaki

LEGEND

- Erosion Hazard Zone
- Regional Boundary
- Catchment Boundary
- State Highway
- Roading Surface
 - sealed
 - metalled
 - unmetalled
- Indigenous Forest
- Planted Forest
- Scrub and other
- Grassland
- Orchards/Croplands

The representation on this map of a road does not necessarily indicate a public right of way

Checked: Kevin Loe
Land Management Services
Environment Bay of Plenty

Approved: Jan Mandemaker
Director, Resource Planning
Environment Bay of Plenty

Date: 1 October 2000

Grid Reference Reading
The grid reference on this map (1:50 000) can only be read to the nearest 100 metres

Full grid reference (7 digits)
eg: 2852000, 6341300
(Easting, Northing)

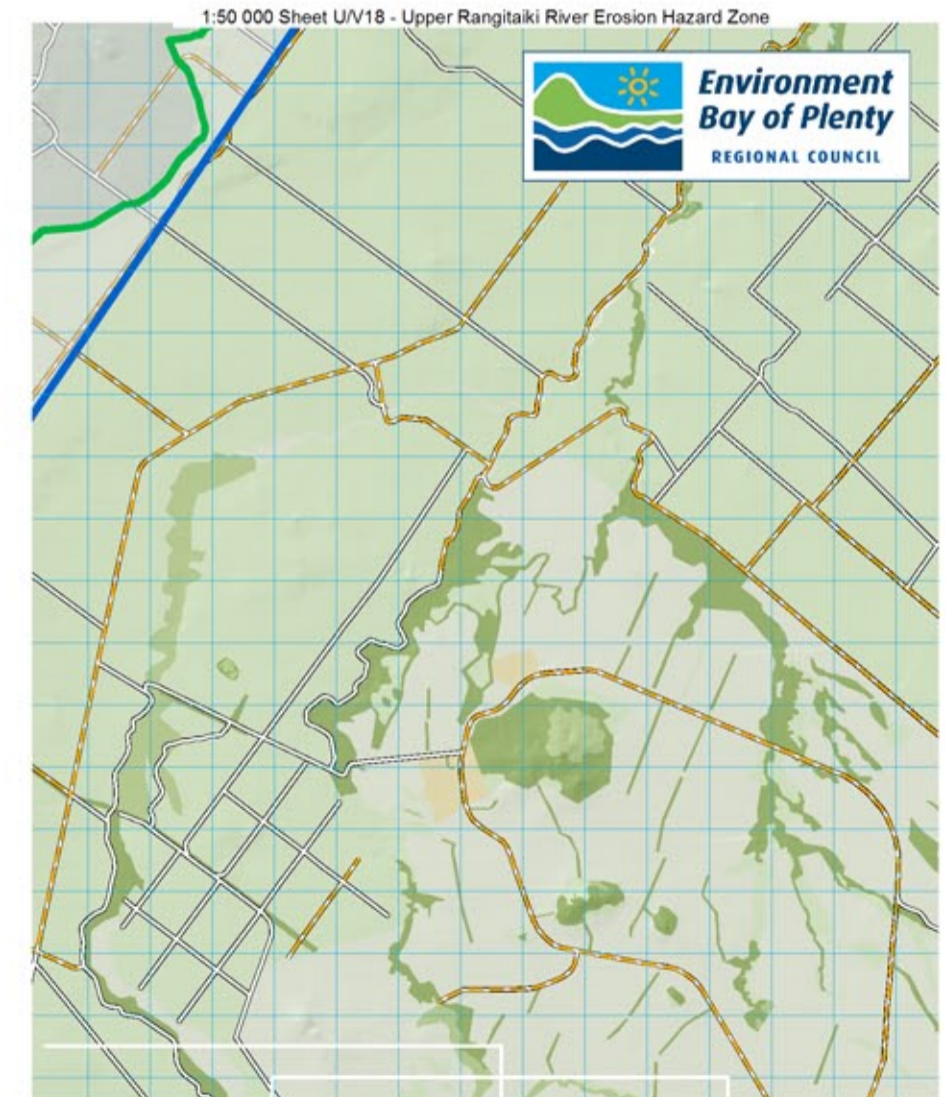
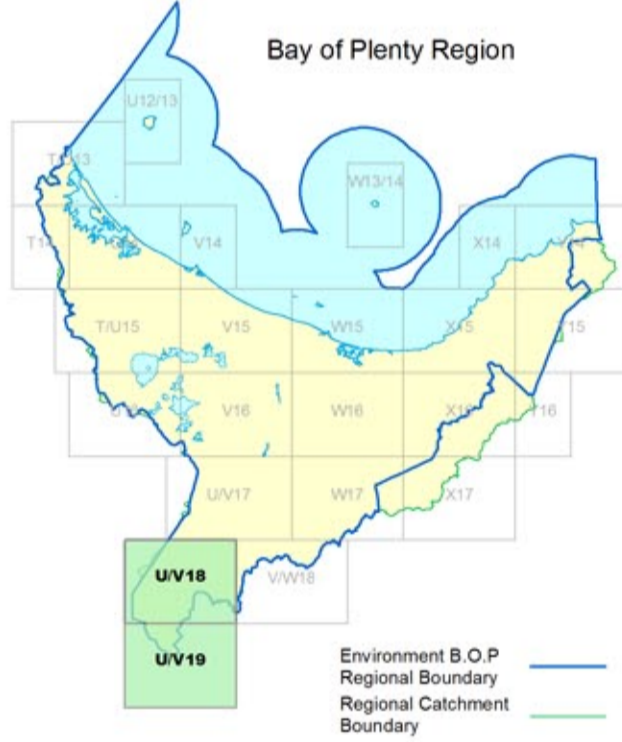
Short grid reference (3 digits)
eg: W15 526 413
(Sheet number, Easting, Northing)

North Points
Magnetic North on this map is 20°12' E of Grid North during 2000 increasing at the rate of approximately 1/2" over 33 years.

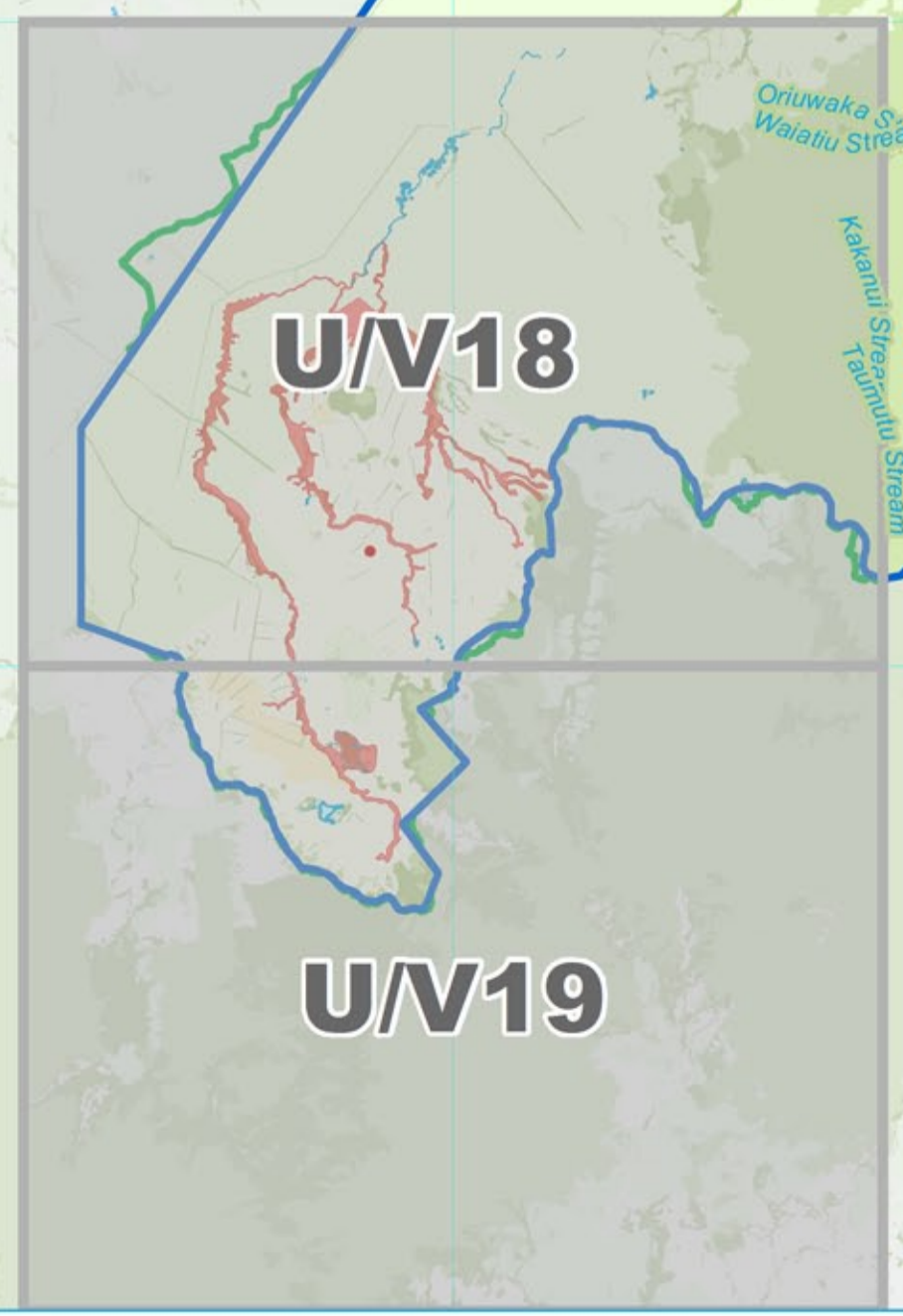
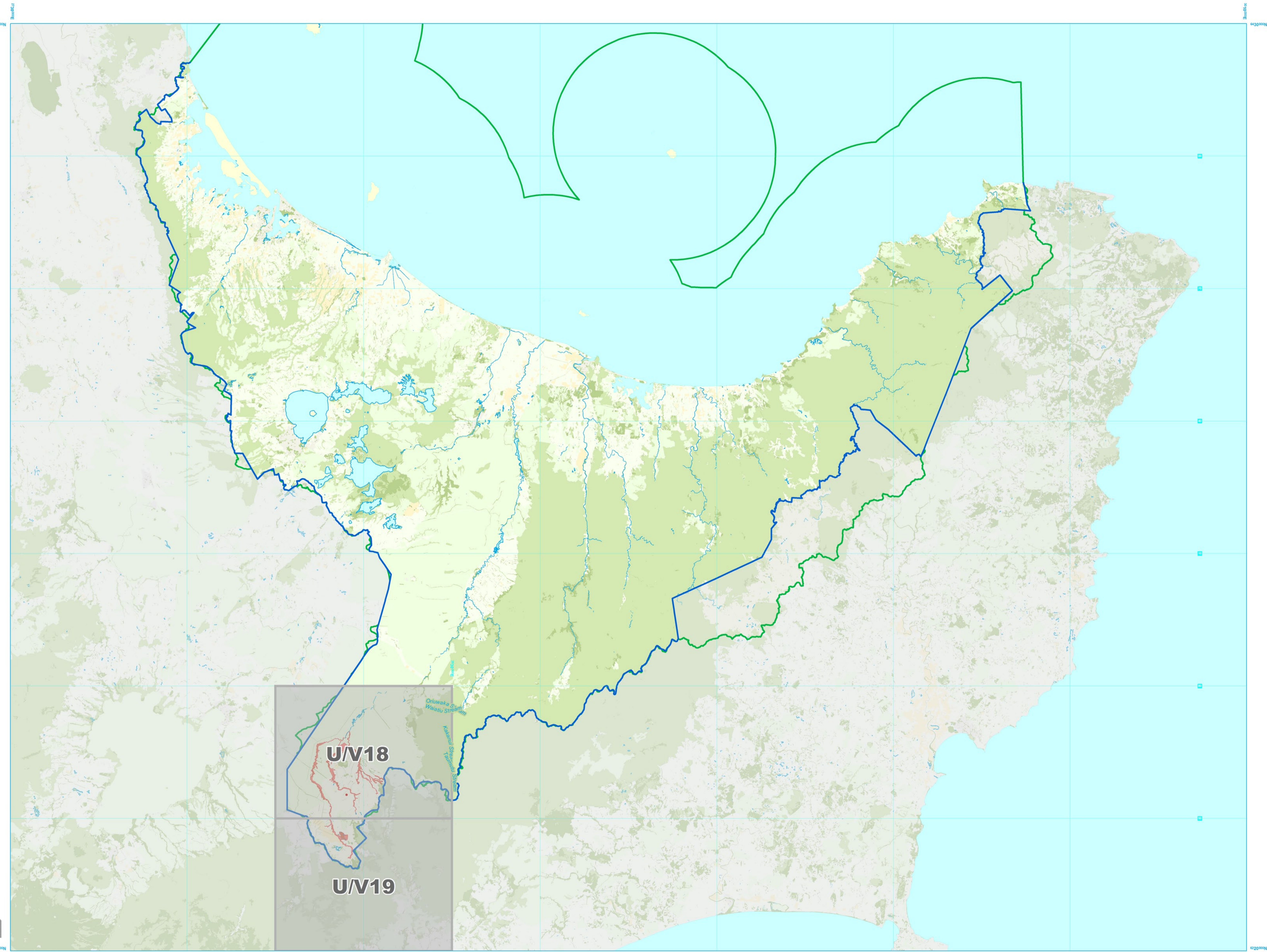
Projection and Grid Information
This map is drawn on the New Zealand Map Grid Projection, a minimum error conformal projection. The grid is the New Zealand Grid, showing co-ordinates in metres in terms of the Geodetic Datum 1949, based on the International (Hayford) Spheroid.

Copyrights
© Environment Bay of Plenty (the Bay of Plenty Regional Council)
© Sourced from Land Information New Zealand data, CROWN COPYRIGHT RESERVED
© Statistics New Zealand

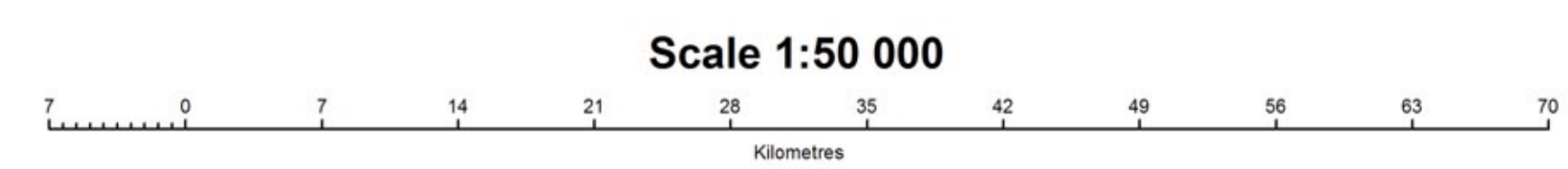
Produced by:
The GeoSpatial Analysis Team
Environment Bay of Plenty (the Bay of Plenty Regional Council)
5 Quay Street, PO Box 364, Whakatane, New Zealand
© Environment Bay of Plenty (the Bay of Plenty Regional Council), 2008



1:50 000 INDEX
Sheet U/V18 Upper Rangitaiki River
Taupo/Whirinaki Erosion Hazard Zone



Projection and Grid Information
This map is drawn on the New Zealand Map Grid Projection, a minimum error conformal projection. The grid is the New Zealand Map Grid, showing co-ordinates in metres in terms of the Geodetic Datum 1949, based on the International (Hayford) Spheroid.



Upper Rangitaiki River Erosion Hazard Zone INDEX

1:50 000
Sheet U/V18
Taupo/Whirinaki